



Delivering water and power™

**FACILITY EMERGENCY RESPONSE PLAN**

***Santan Generating Station***

1005 S Val Vista Drive  
Gilbert, AZ 85296



Prepared by  
Salt River Project  
Santan Generating Station  
February 2025

## Quick Guide: Santan Emergency Contacts

<b>Name</b>	<b>Cell Phone</b>	<b>Office Phone</b>
Barbara Sprungl, Director	(602) 516-4908	(602) 236-5374
Robert Woods, Senior Operations O&M Manager	(602) 245-0065	(602) 236-5099
Operations Supervisor	N/A	(602) 236-4373
Travis Behrens, Sr. Environmental Scientist	(602) 342-7661	(602) 236-0571

### SRP Environmental Compliance, Safety Services and Fire Protection

<b>Name</b>	<b>Cell Phone</b>	<b>Office Phone</b>
Josh Voss, Sr. Environmental Compliance Scientist	(505) 947-7984	(602) 236-0165
Ira Lynn, Safety Services	(928) 640-6434	(602) 236-0437
Stephen Caley, SRP Fire Marshal	(602) 390-6446	(602) 236-5578
Security Operations Center (SOC)		(602) 236-5305

### HAZ MAT/Emergency Response Contractor

<b>Name</b>	<b>Office Phone</b>	<b>24-Hr Emergency</b>
MP Environmental Services, Inc.	(602) 278-6233	1 800-458-3036

# 1.0 Site Information and Plant Certification

## 1.1 Purpose

This Facility Emergency Response Plan (FERP) describes response guidelines to be taken in the event of an emergency at the Salt River Project (SRP) Santan Generating Station (Santan). Emergencies may include fire, explosion, medical emergency, or release of hazardous materials including waste which could threaten human health and/or the environment. This FERP is specific for Santan and may be implemented whenever there is an emergency as defined above. A copy of this plan will be maintained in the Santan Control Room and Operations Supervisors' office. Upon request, this FERP will be made available for review by the appropriate regulatory agencies. This plan will be updated annually or whenever there is a change in facility design, construction, operation, or maintenance policies that necessitate a revision.

Santan maintains inventories and uses hazardous materials and substances in specific quantities. Consequently, Santan is subject to the emergency response planning requirements defined in Arizona Revised Statutes 49-127. In accordance with this statute, this document fulfills the emergency response plan requirements and outlines actions that will be taken during an emergency. This FERP is submitted electronically to the Arizona State Emergency Response Commission (AZSERC). In addition, since Santan has the potential to generate 2,200 pounds (1,000 kilograms) or more of hazardous waste per month or to accumulate more than 13,227 pounds (6,000 kilograms) of hazardous waste on-site at any one time, this document also serves as the facility contingency plan as required per 40 CFR 265, Subpart D for hazardous waste handling, record keeping, disposal and spill cleanup. In addition, this document serves as the Emergency Action Plan per 29 CFR 1910.38, and Fire Prevention Plan per 29 CFR 1910.39.

## 1.2 Facility Information

<b>Facility Name:</b>	Santan Generating Station (Santan)
<b>Location:</b>	1005 S. Val Vista Drive Gilbert, AZ 85296
<b>County:</b>	Maricopa
<b>Phone Number:</b>	(602) 236-2734
<b>Fax Number:</b>	(602) 236-2331
<b>Owner/Operator:</b>	SRP P.O. Box 52025 Phoenix, AZ 85072-2025
<b>County:</b>	Maricopa
<b>Phone Number:</b>	(602) 236-5900

The Santan facility is situated in a residential/commercial area located in Gilbert, Arizona. This facility is not located on Indian lands. A vicinity/location map is provided in Attachment 1.

Santan is a combined cycle gas turbine electric generating facility that is wholly owned by SRP. The facility is on approximately 120 acres in Gilbert, Arizona, at the southeast corner of Warner Road and Val Vista Road. The facility consists of nine generating units: S-1, S-2, S-3, S-4, S-5A, S-5B, S-5S, S-6A, and S-6S and various ancillary services. The primary fuel for all units is

natural gas. There are two large bulk fuel storage tanks at the facility; however, they remain empty and not in use.

**1.3 Statement of Certification**

I certify that the information provided herein is accurate and complete and that provisions exist to annually update the Facility Emergency Response Plan and demonstrate the capability to execute the plan on the request of the Commission.



Barbara Sprungl, Director, Santan and Kyrene Generating Stations

2-27-2025

Date

## 2.0 Facility Response Roles

The Plant Manager has designated Santan Emergency Coordinator (EC) responsibilities to the Control Room Operator. Santan is staffed 24 hours a day, seven days a week by rotating shift personnel who also inspect the facility on a routine basis. A Control Room Operator will always be present on-site. The EC will designate an individual to be the liaison to the responding agencies. The EC is the primary onsite coordinator during emergencies until relieved of that duty by either Plant Management or emergency responders (Police, Medical or Fire). Since the facility is manned in this manner, individual names and titles are not provided for the ECs in this plan.

Santan EC can be reached from any of the following phone numbers 24 hours a day:

Ext 6-5511 or 911      USING INTERNAL PLANT PHONES  
(602) 236-5511      USING CELL PHONES

### 2.1 First on Scene Responsibilities

The first person on the scene will assess the situation to the extent they can safely do so. If the situation involves an incidental spill or a fire in the incipient stage, then the first person on the scene may respond to the situation if they are trained and if this can be safely done using the protective equipment readily at hand. This could include extinguishing a small fire with a hand-held extinguisher, turning off a valve, etc.

**NOTE:** The first person on the scene can only approach the incident (fire/spill/release) if the extent of the full risk posed by the incident is known and there is no danger to the first on scene.

If the incident is beyond the capacity of the first on scene to handle, the first on scene will notify the EC in the control room at **x911 using a plant phone or (602) 236-5511 from a cell phone**. They may also call 911 from a cell phone but need to contact the EC immediately after emergency services have been called so the EC can alert the security gate.

The first on the scene should provide the following information:

- a. His/her name.
- b. Location of the emergency.
- c. The extent of any injuries or personnel involved, if known.
- d. The size and nature of the emergency.
- e. Any materials/equipment involved in the incident, if known.

The first on scene should not break communication with the EC unless directed to do so by the EC or a change in the emergency situation jeopardizes the safety of the caller.

### 2.2 Emergency Coordinator Responsibilities

Whenever there is an emergency such as an explosion, fire, medical emergency, or release of hazardous material including hazardous wastes, the EC shall:

- Evaluate the severity of the emergency.
- Dial 911 for outside emergency services if needed.
- Notify Security Operations at 602-236-5305 of the emergency.

- Designate liaison if emergency services are required.
- Initiate or direct the initiation of the emergency response evacuation alarm if necessary.
- Notify Plant Director and Senior Operations O&M Manager.
- Notify Power Distribution Operations (PDO) and Automatic Generation Control (AGC) if emergency involves or could involve generating and/or transmission equipment.
- If hazardous material and/or wastes are involved, notify Santan Environmental Scientist.
- Initiate SRP Accident Reporting Procedures for medical injuries.

Note that Santan relies on the Gilbert Fire Department to perform all confined space rescues. Also, Santan will follow the SRP Business Continuity & Emergency Management plan for bomb threats and shelter in place incidents.

Before facility operations are restored to normal the EC shall:

- Assist in arranging for the proper storage and disposal of any recovered waste, contaminated soil, surface water, or any other material that results from the incident.
- Ensure that all Santan emergency response equipment is in proper condition and available for use.
- Assist in evaluating whether notification or reporting to outside regulatory agencies is required. These agencies may include the Arizona Department of Environmental Quality (ADEQ), Arizona State Emergency Response Commission (ASZERC), or the National Response Center (NRC).
- Regulatory agency notifications will be evaluated and, if necessary, will be made through either appropriate plant personnel or SRP Corporate Environmental Compliance.

### **2.3 Site Security**

The entrance to the site is staffed 24/7 by security personnel who control access to the site. The facility is surrounded entirely by fencing, with electronic monitoring devices for breaches. Cameras are strategically placed to allow operators to see the facility from the control room and security personnel to see the facility from the guard shack. Facility lighting is sufficient for operators and security personnel to detect acts of vandalism. Only authorized personnel are permitted unescorted access to the plant.

## **3.0 Evacuation Plan and Emergency Response Procedures**

There is an emergency alarm for Santan Units 1 through 6. The alarms are used to signal an emergency that requires evacuation from work areas within the alarm vicinity. This emergency alarm is activated in the Control Room at the request of the EC. There are several area alarms within the facility that serve to alert personnel of the presence of fire or release of fire suppressant. The activation of area alarms may or may not lead to the activation of the evacuation alarm. The evacuation alarm is a series of short blasts and is audible throughout the facility.

When the evacuation alarm sounds:

1. All personnel should immediately report to the primary assembly area located south of the administration building in the parking area along the fence line. Personnel should avoid obvious hazardous areas on the way to their primary assembly area. Personnel should

- report to the secondary assembly area by Deep Well A, in the northeast area of the plant, if the primary assembly area cannot be reached safely.
2. Employees should assist visitors and others needing assistance so that they safely reach the assembly area.
  3. Employees should notify the EC of any individuals who did not evacuate and where they are at on plant site.
  4. The EC will designate an employee to immediately account for all visitors and personnel. If safe to do so, operating personnel will ensure the Santan Visitor Logbook gets to the EC so any visitors on site can be accounted for.
  5. The EC will notify the outside emergency responders upon arrival of any visitors or personnel that are not accounted for and where they are at on plant site if known.
  6. Everyone should remain in the assembly area until released.

The following personnel are exempt from the evacuation procedure described above:

- The EC will remain in the control room if it is safe to do so.
- Outside operators will report to the control room, unless directed otherwise by the EC.
- If the control room is unsafe for occupancy, operating personnel will meet at the assembly area.

Employees may be directed to relocate during any part of the emergency if it is deemed necessary to ensure their safety. Should it become necessary to evacuate personnel off the plant site, four gates are available for exiting the site. These include the following:

- Main Gate – Southwest corner of the property, exit to the access road that leads to Val Vista Drive.
- Raw Water Storage Tank Gate – Southwest corner of the property, exit to the access road that leads to Val Vista Drive.
- Northeast Gate – Northeast corner of the property leading to Warner Road. Note that this exit is normally locked but can be opened at any time.
- West Gate – West of Cooling Tower 5, through the tunnel and into another SRP facility with additional exits. Note that this exit is normally locked but can be opened at any time.

The evacuation map is included in Attachment 2.

### **3.1 Community**

Community notification will be made at the direction of the Gilbert Fire Department or Gilbert Police Department.

## **4.0 Employee Training**

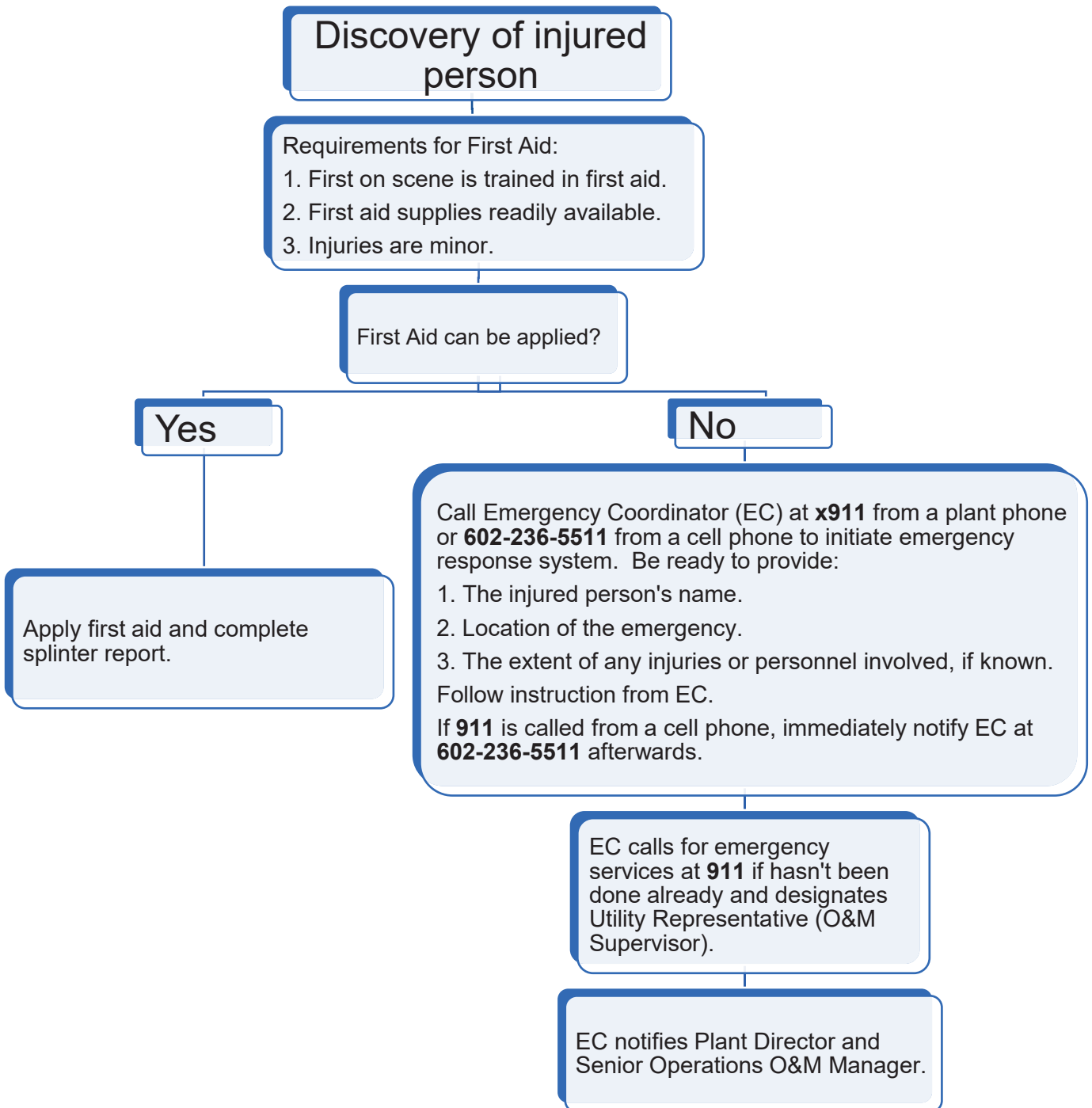
All Santan employees are trained annually as to the provisions of this plan. Training consists of the following:

- Familiarization with this FERP.
- Emergency evacuation.
- Fire safety.
- Waste familiarization and management.
- Spill response and emergency notifications.

Training records are maintained onsite. All employees who have positions that require the use of a respirator are trained in the proper selection and use of respirators and are fit tested on an annual basis. New or transferred employees will be trained within six months after the date of their employment at this facility.



# Quick Guide: Medical Emergency Flow Chart



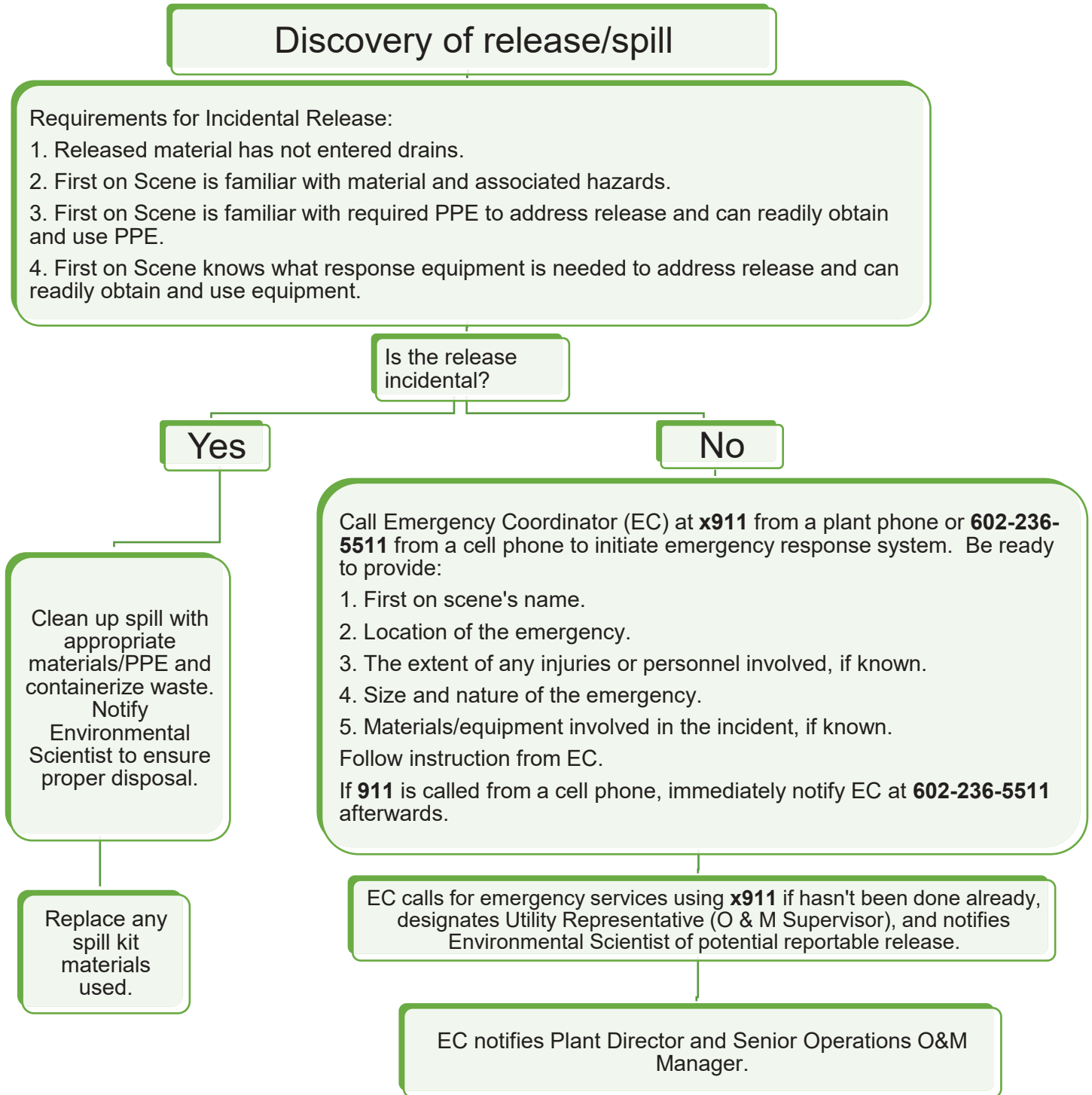
## 5.0 Medical Emergency

Santan has the following training and supplies to deal with medical emergencies:

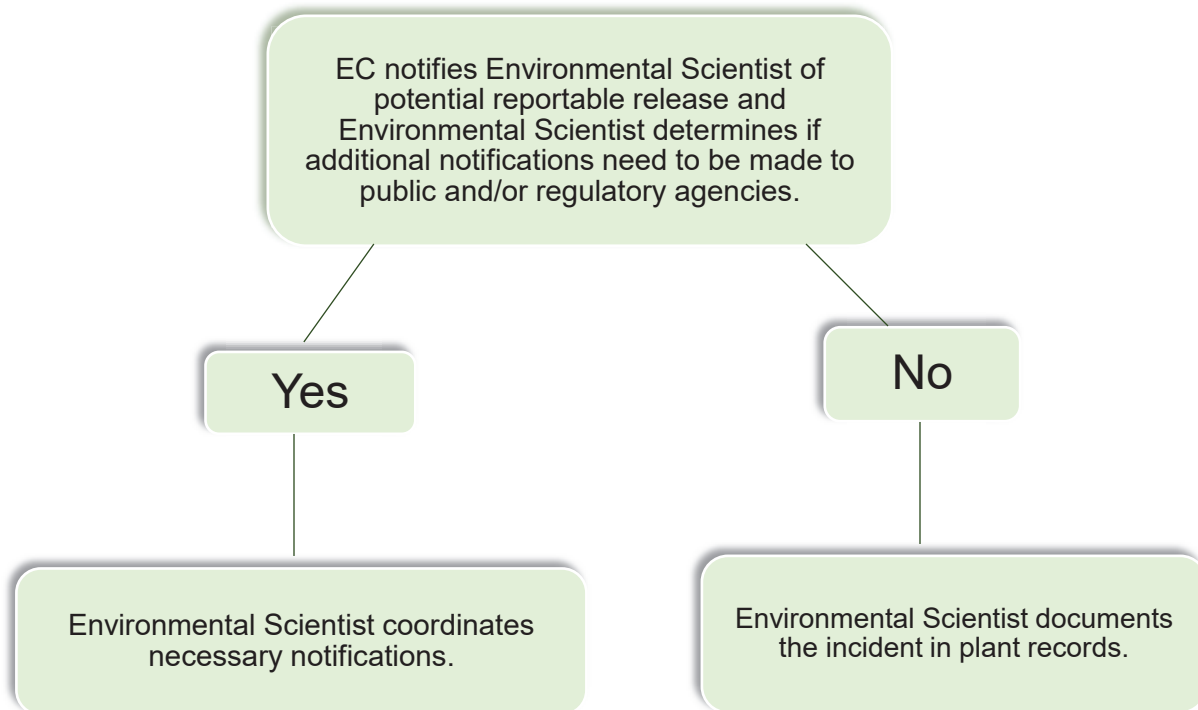
- Employees are trained in basic first aid, Cardiopulmonary Resuscitation (CPR), and Automated External Defibrillator (AED) use.
- AEDs are in the Control Room, Pit Maintenance Shop, Diesel Fire Pump building, Clarifier building and the Cooling Tower 5 Motor Control Center (MCC) building.
- First aid kits are available for initial response. These kits are in the maintenance shop, control room, tool room, weld shop, and in all plant vehicles. Extra supplies are kept in the chemical lab.
- Eyewashes/safety showers are located throughout the facility. The locations of the eyewashes/safety showers are listed on an internal inspection form maintained by Santan Operations.

SRP approved medical facilities are provided in Attachment 3.

# Quick Guide: Release Discovery Flow Chart for EC



## Quick Guide: Release Discovery Flow Chart for Environmental Scientist



## 6.0 Chemical Spill and Cleanup

The safe handling of all types of hazardous materials and waste generated by the plant is defined in Safety Data Sheets (SDS). Santan's approved chemical list and SDS's are available on-line (<https://srpnet.sharepoint.com/sites/Departments/safety/>). If a spill should occur, all safety precautions will be strictly adhered to during cleanup operations. Plant management has committed the necessary resources to respond to any emergency involving hazardous materials or waste.

Spill response equipment and materials are maintained at Santan for use in responding to incipient releases and are located in the shop areas, in the basements of the generating units, at the cooling tower chemical areas, and in the steam turbine buildings. These primary storage areas are inventoried monthly to ensure adequate supplies.

Incidental release cleanup will be performed by qualified SRP personnel or a qualified outside contractor. In the event of a large or unmanageable spill of a hazardous material, the EC will dial 911 for assistance. In addition, SRP has contracted with an outside contractor to perform hazardous material clean up. This contractor is qualified with emergency response technicians to clean up and package spills including hazardous waste.

All materials contaminated during cleanup operations will be handled as a regulated waste, placed in the appropriate container, and disposed of in accordance with Federal/State Regulations and SRP Policies.

If there is a release of a reportable quantity (RQ) of specific hazardous substances into the environment within a 24-hour period, the Environmental Scientist will report the spill to the necessary regulatory agencies. The material list in Attachment 4 of this plan identifies the materials that have an assigned RQ. The Environmental Scientist will ensure all necessary notifications are completed.

## 7.0 Chemical Storage

### 7.1 Hazardous Waste Storage Locations

Hazardous wastes are collected and stored at the following locations:

- Central Accumulation Area – Primary hazardous waste storage area for Santan. This storage area may contain full containers of hazardous waste for periods of up to 270 days. It is an enclosed metal shed that is located south of the ammonia tanks.
- Satellite Accumulation Area No. 1 – Located on the north side of the administrative building maintenance shop.
- Satellite Accumulation Area No. 2 – Located in the S6 Steam Turbine Building.
- Universal Waste – Located in the central accumulation area and in the lube shop.
  - Temporary universal waste collection – Pit maintenance shop and the administrative building maintenance shop.

## **7.2 Hazardous Materials Storage Locations**

Due to the layout of the facility, hazardous materials are stored throughout the facility in various quantities. This is due to the size of the facility and the nature of the industry. However, larger volumes (non-bulk) of hazardous materials will be stored at or near the following locations:

- Warehouses and water treatment buildings.
- Ammonium Hydroxide, 19%, storage tank east of the weld shop.
- Chemical feed area for the cooling towers.
- Mechanical maintenance shop areas.

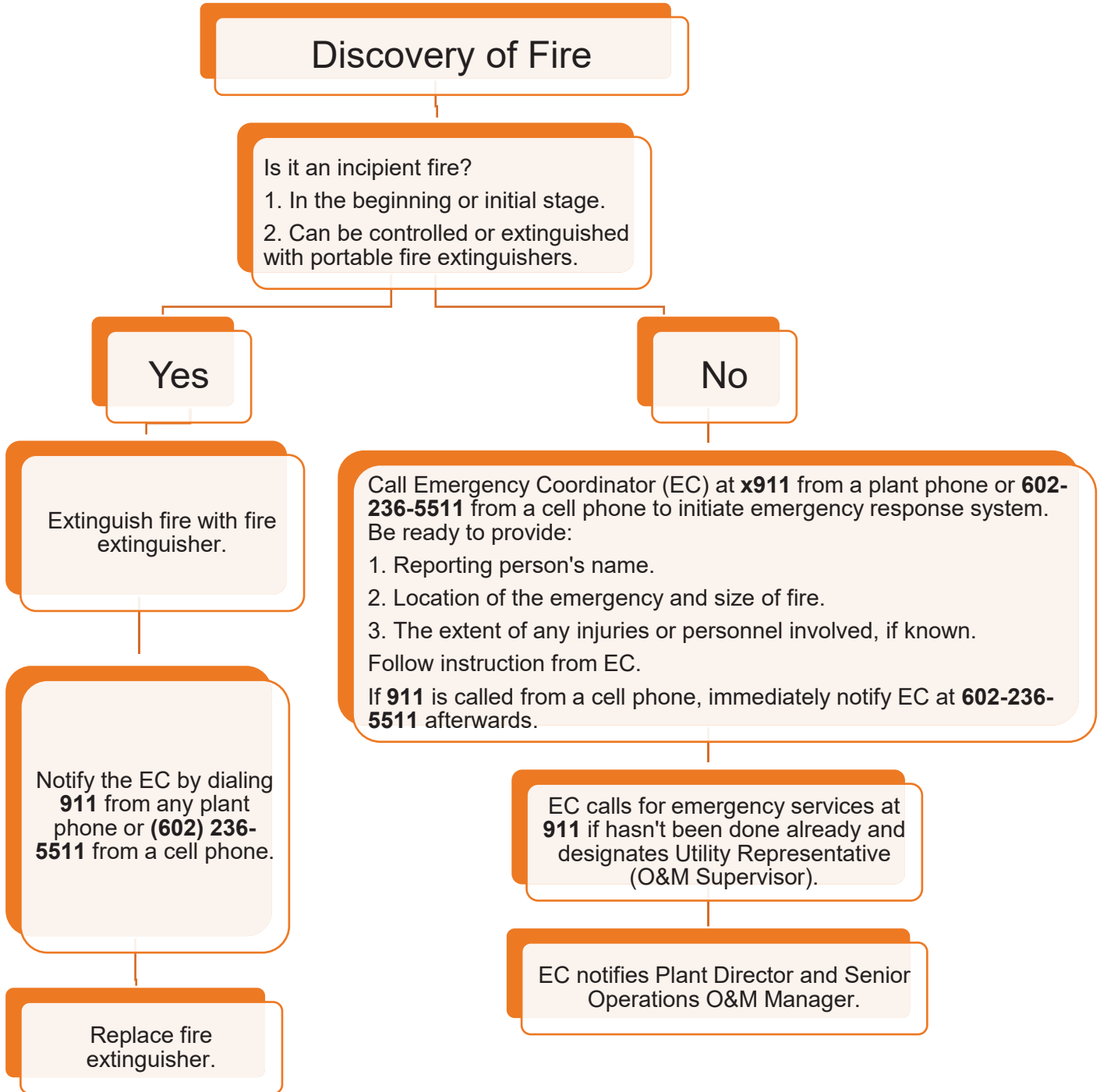
Water treatment chemicals and process chemicals that are defined as extremely hazardous, hazardous materials, fire hazards, or bulk materials used on site are listed in Attachment 4.

Spills near chemical storage areas are retained on-site due to the existing plant drainage system.

## **7.3 AZSERC TIER II Reported Chemicals**

Attachment 5 contains a list of the chemicals reported to the Arizona Emergency Response Commission (AZSERC) and the location where each of these chemicals are stored on site. These chemicals are stored at Santan in excess of the threshold limit of 10,000 pounds.

# Quick Guide: Fire Discovery Flow Chart



## 8.0 Fire Response

Response to fire by Santan personnel is limited to incipient fires only. An incipient fire is defined as a fire which is in the initial or beginning stage and which can be controlled or extinguished by portable fire extinguishers [29 CFR 1910.155(c)(26)]. Santan will call 911 for all fires that do not meet the definition of an incipient fire. The systems have alarms and delayed activation so employees can evacuate each area. All systems are routinely inspected and are subject to regularly scheduled preventative maintenance.

Maintenance schedules and inspection records are kept in the maintenance files. The use of firefighting equipment requires notification to the O&M Supervisor who will provide for servicing of equipment.

The following represent the fire suppression systems in place at Santan:

**A. Carbon Dioxide System (CARDOX):**

- Units S1-S4 gas turbine compartments
- Units S5A, S5B and S6A
  - Gas turbine compartment/gas fuel compartment
  - Number 2 bearing tunnel
  - Lube/hydraulic compartment

An alarm will sound 60 seconds before the carbon dioxide is released to warn employees in the area to evacuate.

**B. Automatic Sprinklers:**

- i. Wet pipe sprinklers:
  - Warehouse
  - North and South Maintenance Warehouse
  - Administrative Building Maintenance Shop
  - Tool Room
  - Water Treatment Plant/Chemistry Lab
  - Fire Pump Building
- ii. Pre-Action sprinklers:
  - Cooling Towers 5 and 6
  - Unit 5 Steam Turbine Bearings
  - Unit 6 Steam Turbine Bearings
  - Administrative Building Basement
- iii. Deluge System:
  - S1-4 Station Transformers
  - Auxiliary Transformers
  - Steam Turbine Lube Oil Tanks

**C. Aqueous Film Forming Foam (AFFF) Deluge systems:**

- Unit 5 and 6 Steam Turbine Building Lube Oil Tank

**D. FM200 Agent:**

- Unit 5 Steam Turbine Building Electronics Room – second level
- Unit 6 Steam Turbine Building Electronics Room – ground level

**E. Prolnert Agent:**

- Control Room
- Control Room Communications Room



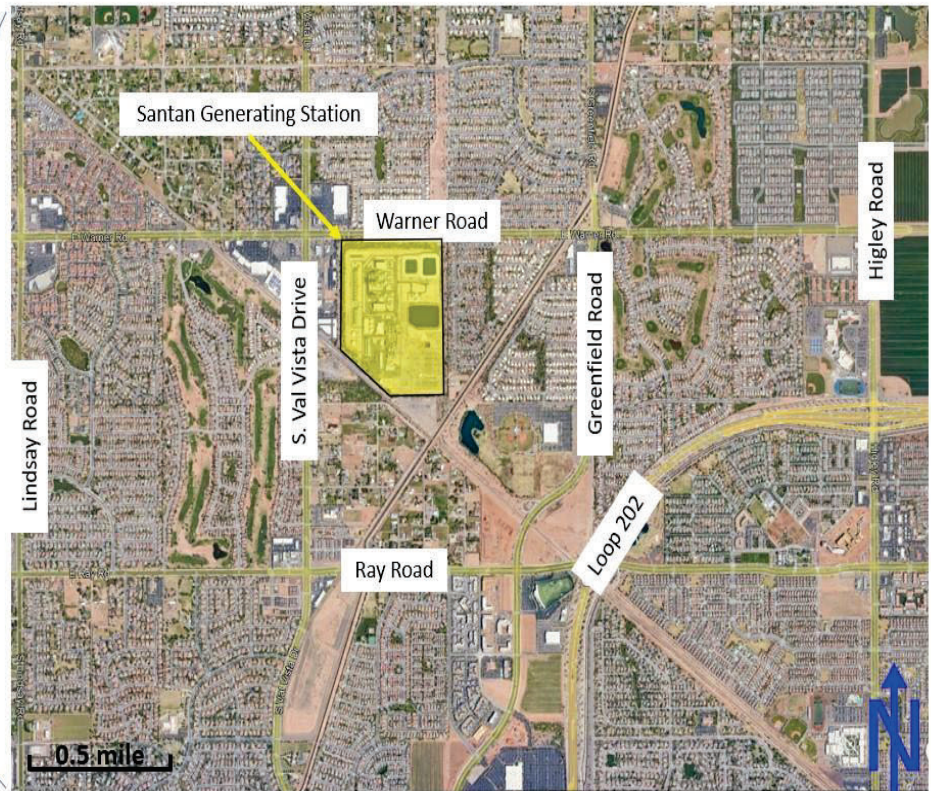
- Administrative Communications Room
- Control Room Basement

**F. Hand-Held Fire Extinguishers:**

Fire extinguishers are located throughout the plant site. Each extinguisher is labeled as to the type of fire it can extinguish. The fire extinguishers are inspected monthly for location and condition. Each extinguisher has a number associated with it for the purposes of inspection and servicing. The operators maintain a listing of fire extinguishers and their locations. Spare fire extinguishers are maintained in the tool room for fire watch duties.

# ATTACHMENT 1 - Vicinity/Location Map

Santan Generating Station  
1005 S. Val Vista Drive  
Gilbert, AZ 85296



# ATTACHMENT 2 - Santan Evacuation Map



# ATTACHMENT 3 – Emergency Medical Facilities



## SRP Notice to Employees Approved Medical Facilities

Revised May 2024  
X03-042 FF 05/24  
Page 1 of 2

### IF YOU ARE INJURED WHILE WORKING FOR SRP:

#### Contact numbers:

*\*In case of a medical emergency, please call 911.*

- In the Valley: Call the emergency number, ext. 6-5305, or radio PDO or ADC.
- At CGS: Call ext. 7-5656 or radio the control room for referral.
- Notify your supervisor.

#### Notify Health Services.

- You will be referred to a company nurse to determine level of care.
- Treatment may include first aid, referral to approved occupational medical facility or emergency facility.

#### If referred for medical evaluation:

- Initial visit: Complete the Worker's & Physician's Report of Injury form (supplied by occupational clinic).
- Upon release to return to work, provide Health Services with a work status. The form must include physical restrictions, follow-up appointments and medications, if any.

If you do not choose to accept medical treatment provided by SRP and you seek treatment from your personal physician, you do so at your own expense. If this results in time off, it may be without workers' compensation benefits.

For more information, contact Health Services at (602) 236-5956.

Claims are administered by CCSI, SRP's third-party administrator. They can be reached at (480) 384-5850.

### EAST VALLEY

#### CONCENTRA - EAST MESA (480) 545-1398

1959 S. Val Vista Drive, Suite 106, Mesa, AZ 85204  
Hours: M-F, 8 a.m.-5 p.m.

#### BANNER GATEWAY OCCUPATIONAL HEALTH (480) 543-3300

(Northeast of hospital)  
1641 E. Guadalupe Road, Gilbert, AZ 85234  
Hours: M-F, 7 a.m.-6 p.m.

#### BANNER OCCUPATIONAL HEALTH (480) 827-5685

1979 W. Ray Road, Chandler, AZ 85224  
Hours: M-F, 7 a.m.-6 p.m.

#### CONCENTRA - TEMPE (480) 968-7200

950 W. Southern Ave., Tempe, AZ 85282  
Hours: M-F, 8 a.m.-5 p.m.

#### MEDICINE FOR BUSINESS AND INDUSTRY (MBI) (480) 629-5592

1440 S. Country Club Drive, Mesa, AZ 85210  
Hours: M-F, 8 a.m.-5 p.m.

#### CONCENTRA - SCOTTSDALE (480) 991-9358

10335 N. Scottsdale Road, Suite A  
Scottsdale, AZ 85253  
Hours: M-F, 8 a.m.-5 p.m.

#### CONCENTRA - MESA (480) 644-7900

1710 W. Southern Ave., Mesa, AZ 85202  
Hours: M-F, 8 a.m.-5 p.m.;  
Saturday, 8 a.m.-noon

#### MEDICINE FOR BUSINESS AND INDUSTRY (MBI) (480) 466-7522

8820 S. Kyrene Road, Tempe, AZ 85284  
Hours: M-F, 8 a.m.-5 p.m.

#### MEDICINE FOR BUSINESS AND INDUSTRY (MBI) (480) 900-4665

1537 S. Higley Road, Gilbert, AZ 85296  
Hours: M-F, 8 a.m.-5 p.m.

### CENTRAL VALLEY

#### BANNER PHOENIX OCCUPATIONAL HEALTH (602) 839-4456

1300 N. 12th St., Suite 520, Phoenix, AZ 85006  
Hours: M-F, 6 a.m.-10 p.m.  
Sat-Sun, 8 a.m.-4 p.m.

#### MEDICINE FOR BUSINESS AND INDUSTRY (MBI) (602) 437-0234

4013 E. Broadway Road, Suite A  
Phoenix, AZ 85040  
Hours: M-F, 7 a.m.-7 p.m.

### WEST VALLEY

#### BANNER ESTRELLA OCCUPATIONAL HEALTH (623) 327-4100

9305 W. Thomas Road, Suite 235  
Phoenix, AZ 85037  
Hours: M-F, 7 a.m.-6 p.m.

#### BANNER THUNDERBIRD OCCUPATIONAL HEALTH (602) 865-5618

5601 W. Eugie Ave., Suite 213, Glendale, AZ 85304  
Hours: M-F, 7 a.m.-6 p.m.

#### MEDICINE FOR BUSINESS AND INDUSTRY (MBI) (623) 248-1950

14419 W. McDowell Road, Goodyear, AZ 85395  
Hours: M-F, 7 a.m.-7 p.m.;  
Saturday, 8 a.m.-5 p.m.

#### MEDICINE FOR BUSINESS AND INDUSTRY (MBI) (602) 337-8356

15236 N. 59th Ave., Glendale, AZ 85306  
Hours: M-F, 8 a.m.-5 p.m.

#### MEDICINE FOR BUSINESS AND INDUSTRY (MBI) (602) 272-7676

3501 W. Osborn Road, Phoenix, AZ 85019  
Hours: M-F, 7 a.m.-10 p.m.;  
Saturday, 8 a.m.-6 p.m.

#### CONCENTRA - PEORIA (623) 487-8598

14155 N. 83rd Ave., Building 8, Suite 148  
Peoria, AZ 85381  
Hours: M-F, 7 a.m.-5 p.m.;  
Saturday, 8 a.m.-noon

#### CONCENTRA - ESTRELLA (623) 245-6695

2010 N. 75th Ave., Phoenix, AZ 85035  
Hours: M-F, 8 a.m.-5 p.m.

#### CONCENTRA - PHOENIX METRO CENTER (602) 375-1155

12808 N. Black Canyon Hwy., Phoenix, AZ 85029  
Hours: M-F, 8 a.m.-5 p.m.;  
Saturday, 8 a.m.-noon

#### CONCENTRA - WEST (602) 272-7662

3532 W. Thomas Road, Suite 5, Phoenix, AZ 85019  
Hours: M-F, 8 a.m.-5 p.m.

See reverse side for Casa Grande, Globe Area, St. Johns Area, Page Area, Northwest Valley, Show Low, Lakeside and After-Hours Triage - Drug Testing.

★ KEEP POSTED ★



## SRP Notice to Employees

## Approved Medical Facilities

Revised May 2024  
x03-042 FF 05/24  
Page 2 of 2

### IF YOU ARE INJURED WHILE WORKING FOR SRP:

#### Contact numbers:

*\*In case of a medical emergency, please call 911.*

- In the Valley: Call the emergency number, ext. 6-5305, or radio PDO or ADC.
- At CGS: Call ext. 7-5656 or radio the control room for referral.
- Notify your supervisor.

#### Notify Health Services.

- You will be referred to a company nurse to determine level of care.
- Treatment may include first aid, referral to approved occupational medical facility or emergency facility.

#### If referred for medical evaluation:

- Initial visit: Complete the Worker's & Physician's Report of Injury form (supplied by occupational clinic).
- Upon release to return to work, provide Health Services with a work status. The form must include physical restrictions, follow-up appointments and medications, if any.

If you do not choose to accept medical treatment provided by SRP and you seek treatment from your personal physician, you do so at your own expense. If this results in time off, it may be without workers' compensation benefits.

For more information, contact Health Services at (602) 236-5956.

Claims are administered by CCMSI, SRP's third-party administrator. They can be reached at (480) 384-5850.

**CONCENTRA - SOUTHWEST**  
(602) 233-2117  
5340 W. Buckeye Road, Suite 3,  
Phoenix, AZ 85043  
Hours: M-F, 8 a.m.-5 p.m.

**MEDICINE FOR BUSINESS AND INDUSTRY (MBI)**  
(623) 250-3490  
3328 N. Litchfield Road, Goodyear, AZ 85395  
Hours: M-F, 8 a.m.-5 p.m.

### CASA GRANDE

**BANNER CASA GRANDE OCCUPATIONAL HEALTH**  
(520) 381-6783  
1676 E. McMurray Blvd., Suite 2  
Casa Grande, AZ 85122  
Hours: M-F, 7:30 a.m.-4 p.m.

**MEDICINE FOR BUSINESS AND INDUSTRY (MBI)**  
(520) 836-3800  
177 W. Cotton Wood Lane  
Casa Grande, AZ 85122  
Hours: M-F, 8 a.m.-5 p.m.

### GLOBE AREA

**CANYONLANDS OCCUPATIONAL HEALTH**  
(928) 402-0491  
5860 S. Hospital Drive, Suite 102  
Globe, AZ 85501  
Hours: M-F, 7 a.m.-6 p.m.  
Closed from noon to 1 p.m. for lunch.

### ST. JOHNS AREA

**NORTH COUNTRY HEALTHCARE**  
(928) 333-0127  
488 S. Mountain Ave., Springerville, AZ 85938  
Hours: M-F, 7:30 a.m.-6:30 p.m.

**SUMMIT HEALTHCARE FAMILY MEDICINE - ST. JOHNS**  
(928) 337-3000  
625 N. 13th West, St. Johns, AZ 86025  
Hours: Mon.-Thu. 8 a.m.-5 p.m.; Fri. 8 a.m.-noon  
Closed for lunch: noon-1 p.m.

### PAGE AREA

**LAKE POWELL MEDICAL CENTER**  
(928) 645-8123  
467 Vista Ave., Page, AZ 86040  
Hours: M-F, 7:30 a.m.-6 p.m. (Call first.)

**CANYONLANDS URGENT CARE**  
(928) 645-1700  
440 N. Navajo Drive, Page, AZ 86040  
Hours: M-Sat, 7 a.m.-7 p.m.

### NORTHWEST VALLEY

**MEDICINE FOR BUSINESS AND INDUSTRY (MBI)**  
(623) 440-7628  
3033 W. Bell Road, Phoenix, AZ 85053  
Hours: M-F, 8 a.m.-5 p.m.

### SHOW LOW

**BANNER - URGENT CARE & OCCUPATIONAL HEALTH**  
(928) 596-4580  
680 E. Deuce of Clubs, Suite B  
Show Low, AZ 85901  
Hours: M-Sun, 8 a.m.-8 p.m.

### LAKESIDE

**BANNER URGENT CARE**  
(928) 596-4590  
3457 W. White Mountain Blvd.  
Lakeside, AZ 85929  
Hours: M-Sun, 8 a.m.-8 p.m.

### AFTER-HOURS LOCATIONS

#### Valley Facilities

**MEDICINE FOR BUSINESS AND INDUSTRY (MBI)**  
For after-hours injury / triage, call (602) 272-7676.  
An MBI triage nurse will provide the nearest available location.  
Hours: M-F, 7 a.m.-10 p.m.;  
Saturday, 8 a.m.-6 p.m.  
\* Please call MBI prior to arrival.  
\* Injury only.

**CONCENTRA - AIRPORT**  
(602) 244-9500  
1818 E. Sky Harbor Circle North  
Suite 150, Bldg. 2, Phoenix, AZ 85034  
Hours: Open 24 hours every day  
\* Injury and drug testing.

#### CGS Facilities

**WHITE MOUNTAIN REGIONAL MEDICAL CENTER**  
(928) 333-4368  
118 S. Mountain Ave., Springerville, AZ 85938  
Hours: Open 24 hours every day

★ KEEP POSTED ★

# **ATTACHMENT 4 – Hazardous Materials Listing**

Material	Size	Location	Containment	Hazard Category
<b>Ammonium Hydroxide, 19%</b> (Agua Ammonia) CAS 1336-21-6 RQ 1,000 LB ammonium hydroxide (666 gallons of 19% solution) UN2672	Two 21,500-gallon steel tanks	East of Weld Shop	ISC: 35,193 gallons	Corrosive Liquid NFPA: 3,1,0 ERG# 154
	330-gallon poly tote	S5 Steam Turbine WTB	ISC: 541 gallons	
	330-gallon poly tote	S6 Steam Turbine WTB	ISC: 541 gallons	
<b>Sulfuric Acid, 93%</b> CAS 7664-93-9 RQ: 1,000 lbs sulfuric acid (64 gallons acid) RCRA D002 UN 1830  *CT6 sulfuric acid tank is managed to artificial target capacity of 7,702 gallons of sulfuric acid.	10,000-gallon tank, 2019	CT1	ISC: 14,143 gallons	Corrosive Water Reactive NFPA: 3,0,2, W ERG # 137
	254-gallon poly totes (intermittent)	CT1, CT5 or CT6	ISC: 400 gallons	
	250-gallon poly tank	S5/6 WTB	Inside with ISC: 639 gallons	
	12,500-gallon steel tank, 2004	CT5	ISC: 14,521 gallons	
	12,500-gallon steel tank, 2024	CT6	ISC: 8,473 gallons (110% effective containment) *	
	160-gallon poly tank, 2016	Irrigation chemicals at the Raw Water Tank	ISC: Double-walled tank	
<b>Multi-Chlor</b> (sodium hypochlorite 12.5%, bleach) CAS 7681-52-9 RQ: 1,000 lbs sodium hypochlorite (100 gallons bleach) UN 1791	550-gallon poly tank, and 375 tote	CT1	Double-walled tank inside, 110% secondary containment 633 gallons	Oxidizer NFPA: 2,0,0, OXY ERG # 154
	7,614-gallon FRP tank, 2015	S5/6 WTB	Inside with ISC: 12,454 gallons	
	8,500-gallon FRP tank, 2011	CT5	Covered ISC: 11,500 gallons	
	8,500-gallon FRP tank, 2014	CT6	Covered ISC: 10,705 gallons	

Material	Size	Location	Containment	Hazard Category
<b>Ferric Sulfate, 50%</b> Acidic, Inorganic, N.O.S. CAS 10028-22-5 RQ: 2,000 lbs. (for product) UN 3264	Two-4,000-gallon FRP tanks, interconnected through common drain	Clarifier	Covered ISC: 9,312 gallons	Corrosive Liquid NFPA: 2,0,0 ERG# 154
<b>Magnafloc LT25</b> (Flocculation agent, polyacrylamide, anionic) CAS 9003-05-8 No RQ Not regulated by DOT	1-3 pallets, 36 bags per pallet, 55 lbs./bag	Clarifier	Solid material, plant drainage	NFPA: 0,1,0
<b>Nalco PD9604</b> (Hydrotreated heavy paraffinic distillate) CAS 64742-54-7 Not regulated by DOT, No RQ	400-gallon SS totes	CT5 & CT6	ISC	NFPA: 0,1,0
	250-gallon tote	CT1 (temporary)		
	275-gallon IBC (intermittent)	S56 WTB		
<b>Sodium Bisulfite, 40%</b> CAS 7631-90-5 RQ: 5,000 lbs sodium bisulfite (1,111 gallons solution) UN 2693	540-gallon double-walled poly tank, 2016	Outside east of Unit 1	Double-walled tank outside	Corrosive NFPA: 2,1,0 ERG # 154
	540-gallon double-walled poly tank, 2016	North side of S5 STB		
	540-gallon double-walled poly tank, 2016	West side of S6 STB		
	243-gallon IBC (intermittent)	Pond Wet wells	Outside, uncovered Secondary Containment	
<b>Soda Ash</b> (sodium carbonate) CAS 497-19-8	50-pound bag	S5/6 WTB		Irritant
<b>Phosphoric Acid, 75%</b> RQ: 5,000 lbs acid (370 gallons solution) CAS 7664-38-2 UN 1805	400-gallon poly tank	CT1	Outside, uncovered Secondary Containment	Corrosive NFPA: 3,0,0 ERG# 154
	400-gallon poly tank	CT5		
	400-gallon poly tank	CT6		
<b>Nalco 3D Trasar 3DT487</b> (Phosphoric acid, 5-10%) CAS 7664-38-2	400-gallon SS tote tank	CT1	Outside, uncovered Secondary Containment	NFPA: 1,1,0
	400-gallon SS tote tank	CT5		



Material	Size	Location	Containment	Hazard Category
RQ: 4,900 gallons (based on 5%) Not regulated by DOT	400-gallon SS tote tank	CT6		
	250-gallon IBCs (intermittent)	Outside Westside of S5/6 WTB	Plant drainage	
<b>Nalco 3D Trasar 3DT199</b> (Sodium benzotriazole, 30-60%) CAS 15217-42-2 No RQ UN 1719	400-gallon SS tote	CT1	Outside, uncovered Secondary Containment	Corrosive Liquid NFPA: 2,0,0 ERG# 154
<b>Nalco 3D Trasar 3DT098</b> (Sodium Hydroxide, 1-5%) CAS 1310-73-2 RQ 1,000 lbs RCRA D002 UN1824	400-gallon SS tote	CT1	Outside, uncovered Secondary Containment	Corrosive NFPA 3,0,0 ERG #154
<b>Nalco BT-4000</b> (sodium hydroxide, 1-5%) CAS 1310-73-2 RQ: 1,000 lbs RCRA D002 UN 1824	160-gallon poly double-walled tank, 2017	S1-4 WTB	Inside, contained within building	Corrosive NFPA 3,0,0 ERG #154
	400-gallon SS totes	S5 & S6 Steam Turbine WTB	Secondary containment	
<b>Nalco Elim-Ox</b> (carbohydrazide, 5-10%) CAS 497-18-7 No RQ UN 3264	160-gallon poly double-walled tank,	S1-4 WTB	Inside, contained within building	Corrosive NFPA: 0,0,0
<b>Nalco 352</b> (morpholine, 40-60%) CAS 110-91-8 No RQ Not regulated by DOT	160-gallon poly double-walled tank,	S1-4 WTB	Inside, contained within building	Corrosive NFPA: 2,1,0
<b>Sodium Hydroxide, 5-25%%</b> CAS 1310-73-2 RQ: 1,000 lbs sodium hydroxide (800 gallons solution) UN 1824	300-gallon poly tank	Inside S5/6 WTB	Secondary Containment	Corrosive NFPA: 3,0,1 ERG# 154
	400-gallon poly tank (BT-4000)	Unit 5 HRSG Chemical Treatment Building	Secondary Containment	

Material	Size	Location	Containment	Hazard Category
	400-gallon poly tank (BT-4000)	Unit 6 HRSG Chemical Treatment Building	Secondary Containment	
	170-gallon tank (BT-4000)	S1-4 HRSG Chemical Treatment Building	Secondary Containment	
	400-gallon tote	CTI	Secondary Containment	
<b>Vitec 3000</b> Not regulated by DOT No RQ	250-gallon IBC	S5/6 WTB	Secondary Containment	NFPA: 2,0,0
	35-gallon poly tank	S1-4 WTB		
	55-gallon poly tank	S1-4 WTB		
<b>RoClean P112</b> UN 3236	350 lb. fiber drum (solid)	S5/6 WTB	Inside, contained within building	Corrosive NFPA: 3,0,0 ERG# 154
<b>RoClean L403</b> No RQ Not regulated by DOT	55-gallon poly drum	S5/6 WTB	Inside, contained within building	Corrosive NFPA: 2,0,0 ERG# 154
<b>Sodium metabisulfite, solid</b> CAS 7681-57-4 No RQ Not regulated by DOT	50 lb. bags	S5/6 WTB	Inside, contained within building	NFPA: 2,0,1 ERG# 154
<b>Citric Acid, anhydrous</b> CAS 77-92-9 No RQ Not regulated by DOT	50 lb. bags	S5/6 WTB	Inside, contained within building	NFPA: 1,1,0 ERG# 140
<b>Nalco 7330</b> (magnesium nitrate, 1-5%) CAS 10377-60-3 (Cupric Nitrate Trihydrate) CAS 10031-43-3 CERCLA RQ: 100 LBS (10,000 lbs solution) UN 3265	5-gallon poly pail	S5/6 WTB	Inside, contained within building	NFPA: 3,1,0 ERG# 153
<b>Nalco H-550 Microbicide</b> UN 3265	5-gallon poly pail	S5/6 WTB	Inside, contained within building	NFPA: 3,1,0 ERG# 153
<b>Trac- 114 Plus</b> CAS 1310-73-2, 1330-43-4	5-gallon poly pail	S5/6 WTB	Inside, contained	Corrosive NFPA: 3,0,0

Material	Size	Location	Containment	Hazard Category
RQ – 24,700 lbs. product UN 1824			within building	ERG# 154
<b>Simple Green</b> CAS 68439-46-3 Not regulated by DOT, No RQ	55-gallon poly drum	Steam Wash Station	Covered, Secondary Containment	NFPA: 1,0,0
<b>Acetylene, compressed gas</b> CAS 74-86-2 UN 1001	300 CF cylinders	Warehouse, Weld Shop	Properly secured & segregated	Compressed gas Flammable NFPA: 1,4,3 ERG# 116
<b>Argon, compressed gas</b> CAS 7440-37-1 UN 1001	280 CF cylinder, 335 CF cylinder (Ar/CO <sub>2</sub> /O <sub>2</sub> mix), 356 CF cylinder (Ar/O <sub>2</sub> mix)	Warehouse, Weld Shop	Properly secured & segregated	Compressed gas NFPA: 1,0,0 ERG# 120
<b>Carbon dioxide, compressed gas</b> CAS 124-38-9 UN 1013	Fire suppression reservoirs 2 @ 3 ton	Units 2 & 3	Properly secured & segregated	Compressed gas NFPA: 1,0,0 ERG# 120
	Fire suppression reservoir-3 @ 6 ton	Units 5A, 5B, & 6A		
	280 CF cylinders	Warehouse, Weld Shop		
	16 Packs (4,080 CF ea.)	North of Unit 1 HRSG, South of S1-4 wastewater vault		

Material	Size	Location	Containment	Hazard Category
<b>Oxygen, compressed gas</b> CAS 7782-44-7 UN 1072	281 CF cylinders	Warehouse, Weld Shop	Properly secured & segregated	Compressed gas Oxidizer NFPA: 3,0,1 ERG# 122
<b>Helium, compressed gas</b> CAS 7440-74-0 UN 1046	291 CF, 300 CF cylinders	Warehouse, 5A, 5B, 5S, 6A, 6S GSU's	Properly secured & segregated	Compressed gas NFPA: 3,0,0 ERG# 120
<b>Propane, compressed gas</b> CAS 74-98-6 UN 1075	20lb, 33 lb cylinders	North warehouse yellow cage	Properly secured & segregated	Compressed gas NFPA: 4,0,2 ERG# 115
<b>Nitrogen, compressed gas</b> CAS 7727-37-9 UN 1066	255 CF cylinders	Warehouse	Properly secured & segregated	Compressed gas NFPA: 3,0,1 ERG# 121
	16 Packs (4,080 CF. ea.)	West of Unit 1, one near each S1-4 HRSG, South of S1-4 wastewater vault.		
<b>Hydrogen, compressed gas</b> CAS 1333-74-0 UN 1049	16 Packs (3152 CF ea.)	South of Central Accumulation building, South of S1-4 wastewater vault	Properly secured & segregated	Compressed gas Flammable gas ERG# 115 NFPA: 1,4,0
	Trailer (40,000 CF)	West of Lube Shop		
<b>Methane, compressed gas</b> CAS 74-82-8 UN 1971	2.5 CF cylinders	Warehouse	Properly secured & segregated	Compressed gas Flammable gas ERG# 115 NFPA: 1,4,0
<b>Lead Acid Batteries</b> (Sulfuric acid, Lead) CAS 7664-93-9, 7439-92-1 UN 2796	8 batteries (134 lb. acid)	S1-4 Maintenance Shop	Enclosed & vented with secondary containment	Corrosive Water Reactive Hydrogen gas NFPA: 3,1,2, W ERG# 157
	272 batteries (8517 lb. acid)	S1-4 Battery Room		
	120 batteries (9516 lb. acid)	S-5 STB		

Material	Size	Location	Containment	Hazard Category
	60 batteries (5809 lb. acid)	S-6 STB		
	174 batteries (58 per PEEEC) (6903 lb. acid)	S-5A, S-5B, S-6A PEECCs		
	Various small batteries	Emergency generator housings, diesel fire pump building.		
<b>Diesel fuel no. 2</b> CAS 68476-34-6 No RQ NA 1993	500-gallon steel tank	Vehicle Fueling Tank	Covered ISC	Combustible Liquid NFPA: 1,2,0
	500-gallon steel tank	Emergency Storm Sump Generator	Inside double- walled tank	
	800-gallon steel tank	Emergency Turning Gear Generator	Inside double- walled tank	
	350-gallon steel tank	Emergency Diesel Pump	Inside double- walled tank	
<b>Unleaded Fuel</b> No RQ UN 1203	500-gallon steel tank	Vehicle Fueling Tank	Covered ISC	Combustible Liquid NFPA: 1,3,0
<b>Lubricating Oil</b> (Chevron GST 32, Mobile DTE 724, etc.) CAS 64742-54-7 Not regulated by DOT No RQ	55-gallon drums up to 6,500 gallons reservoirs	Facility wide	Varies	NFPA: 0,1,0
<b>Mineral Oil</b> Not regulated by DOT No RQ	Stored in various transformers, OCBs and MCCs throughout the plant	Facility wide	Varies	Combustible Liquid NFPA: 0,1,0
<b>Envirotemp FR3 Fluid</b> <b>Vegetable Oil</b> Not regulated by DOT, No RQ	Stored in the MCCs used for Units 5-6	Pit Units	Varies	NFPA: 0,1,0
<b>EcoSafe® EHC-46</b> Polyether Polyol lubricant Not regulated by DOT No RQ	230-gallon reservoirs, 55- gallon drums	S5 & S6 STB, Warehouse	Enclosed	NFPA: 1,1,0

<b>Material</b>	<b>Size</b>	<b>Location</b>	<b>Containment</b>	<b>Hazard Category</b>
<b>FM-200</b> Heptafluoropropane Compressed Gas, 2.2 UN3296 No RQ	457 lb. cylinders	S6 STB	Enclosed	NFPA 1,0,0 ERG# 126
<b>Pro-Inert IG-55</b> Nitrogen/Argon Mixture Compressed Gas, 2.2 UN1956 No RQ	29 cylinders (823 CF each)	Maintenance Employees Office Area	Enclosed	NFPA 1,0,0 ERG# 126
<b>Aerosol paints/Solvents</b> Pressurized containers UN 1950	12-17 oz cans	Warehouses, S1-4 Maintenance Shop, Mobile Maintenance Shop, S1-4 Basement, Weld Shop	Enclosed	Flammable NFPA 2,3,0 ERG# 126

**Acronyms**

CAS – Chemical Abstracts Service

CT – Cooling Tower

DOT – Department of Transportation

ISC – Impervious Secondary Containment

ERG – Emergency Response Guidebook

MCC – Motor Control Center

NFPA – National Fire Protection Association

PEECC – Packaged Electrical Equipment Control Cab

RCRA – Resource and Conservation Recovery Act

RQ – Reportable Quantity, amount designated by EPA to trigger release notifications

SPCC – Spill Prevention Control and Countermeasures

UN – United Nations chemical ID number used by DOT

WTB – Water Treatment Building

## **ATTACHMENT 5 – Tier II Reported Chemicals**

<b>Chemical</b>	<b>Capacity (gallons)</b>	<b>Location</b>
Ammonium Hydroxide – 19%	20,000	East of the weld shop
	20,000	
	330	S5 chemical treatment building
	330	S6 chemical treatment building
Sulfuric Acid - 93%	10,000	Cooling tower 1
	12,500	Cooling tower 5
	12,500	Cooling tower 6
	300	Water treatment building
	330	Near Raw Water Tank
Phosphoric Acid	400 & 400	Cooling tower 1
	400 & 400	Cooling tower 5
	400 & 400	Cooling tower 6
Lead Acid, Sulfuric Acid Batteries	NA	S1-4 battery room
		S5 and S6 Steam turbine battery rooms
		S5A, S5B, S6A PECCs
		S1-4 Maintenance shop
		Control room basement
Lubrication Oil	23,400	S1-4 power block & lube oil reservoirs
	55 (various)	Warehouse and Lube shop
	27,500	GT & ST Lube Oil reservoirs
Diesel Fuel No. 2	350	Fire pump building
	500	S14 Water treatment building
	800	Cooling Tower 5
	500	South of main warehouse
Sodium Hypochlorite 12.5%	575 and 375	Cooling tower 1
	11,500	Cooling tower 5
	10,705	Cooling tower 6
	12,500	S5-6 Water treatment building
Sodium Hydroxide 5-25%	170	Unit S1-4 HRSG chemical treatment building
	400	Unit S5 HRSG chemical treatment building
	400	Unit S6 HRSG chemical treatment building
	300	S5-6 Water treatment building
	400	CT1
Sodium Bisulfite 35-40%	540	East of Unit S1
	540	North of S5 steam turbine building
	540	West of S6 steam turbine building
Ferric Sulfate	4,000 (x2)	Clarifier



Transformer Oil	138,500 (total)	Throughout facility
Carbon Dioxide, Compressed Gas	Fire suppression reservoirs 2 @ 3 ton	S5 & S6 fire suppression system reservoirs
	Fire suppression reservoir-3 @ 6 ton	S1-4 fire suppression reservoirs
	280 CF cylinders	Warehouse & weld shop
	16 Packs (4,080 CF ea.)	16-pack rack storage north of unit 1 & south of S1-4 wastewater vault
Oxygen, Compressed Gas	281 CF cylinders	Warehouse & weld shop
Helium, Compressed Gas	291 CF cylinders	Warehouse
	300 CF cylinders	Units 5A, 5B, 5S, 6A & 6S Generator Step-Up (GSU) units
Nitrogen, Compressed Gas	255 CF cylinders	Warehouse
	16 Packs (4,080 CF. ea.)	16-pack rack storage west of Unit 1, one near each S1-4 HRSG & many south of S1-4 wastewater vault
Hydrogen, Compressed Gas	Trailer (40,000 CF)	Trailer west of lube shop
	16 Packs (3152 CF ea.)	16 pack rack storage south of central accumulation building & south of S1-4 wastewater vault
Acetylene, Compressed Gas	300 CF cylinders	Warehouse & weld shop
Argon, Compressed Gas	280 CF cylinder, 335 CF cylinder (Ar/CO <sub>2</sub> /O <sub>2</sub> mix), 356 CF cylinder (Ar/O <sub>2</sub> mix)	Warehouse & weld shop
Pro Inert IG-55	823 CF cylinder (29 total)	Maintenance employees office area