

South Mountain Transmission Project open house

Welcome

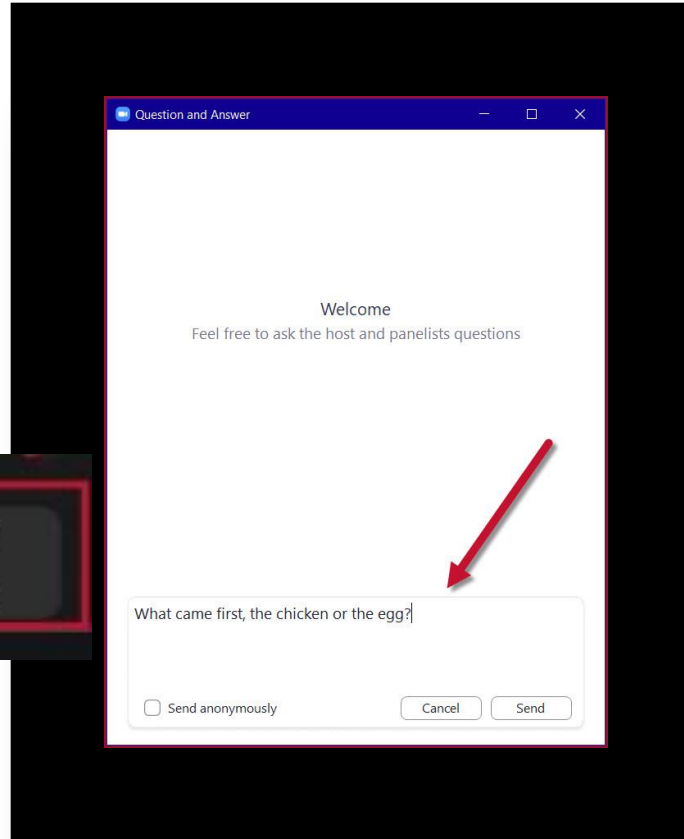
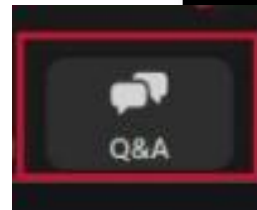
Agenda

- Introductions
- Project Overview Presentation
- Questions & Answers via Q&A Function

We want to hear from you.

- Use the Q&A Feature to type in questions
- Ask questions throughout the presentation
- We will respond to as many questions as we can

*Click "Q&A" at
bottom of screen*



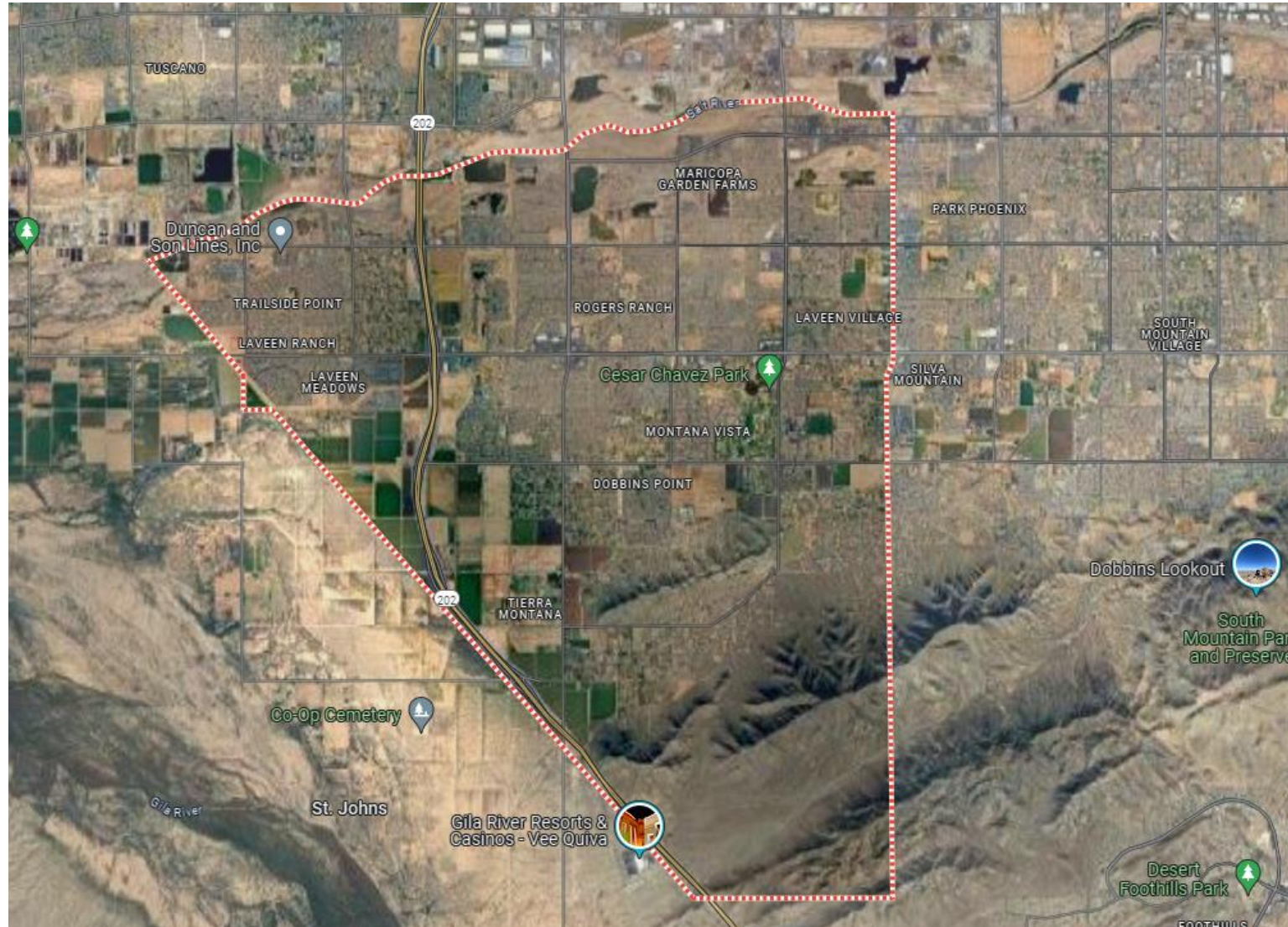
Feedback Survey Form



www.srp.net/SMT
1-855-584-1484

Purpose and Need

Laveen Boundary

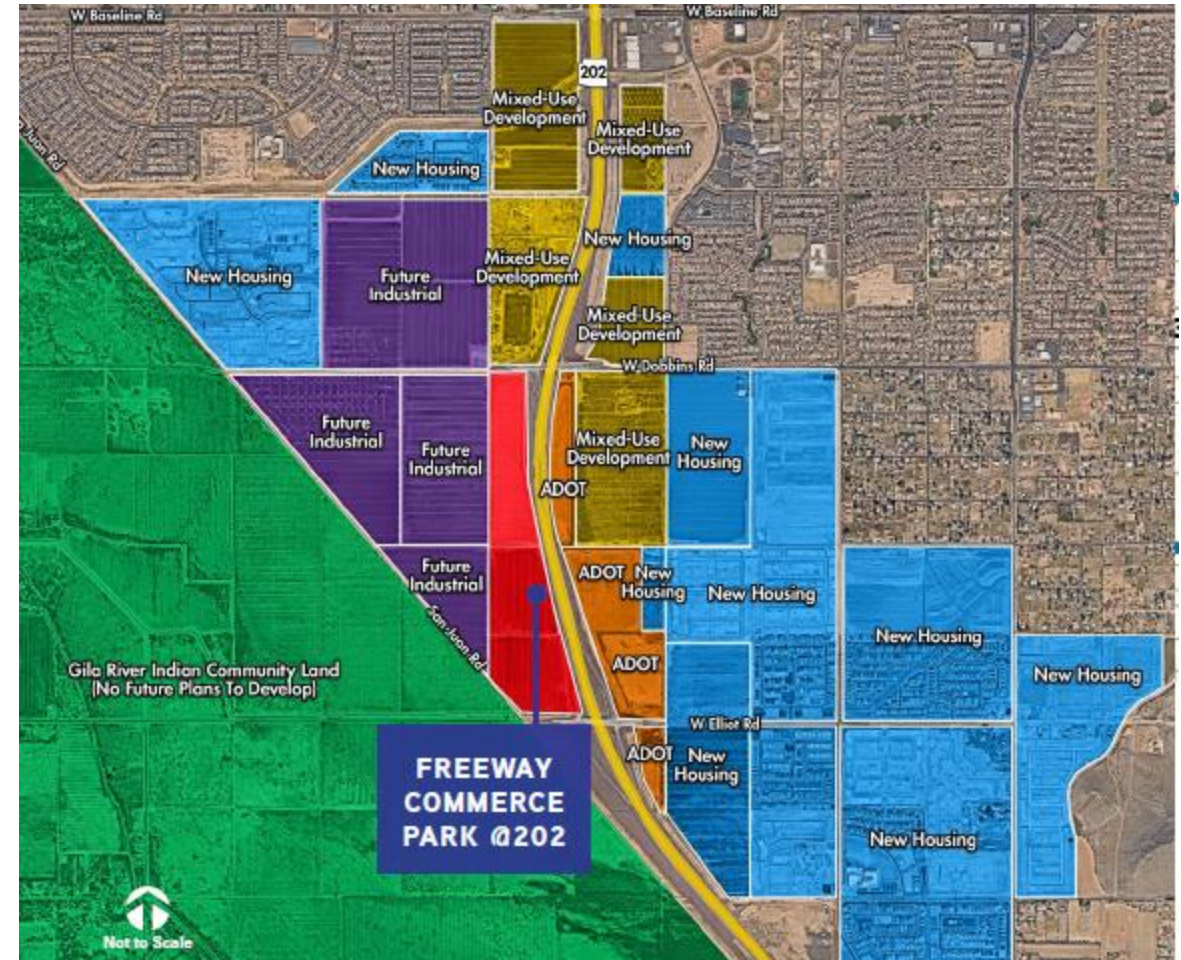


Purpose and Need

City of Phoenix High Growth Area

South Mountain Freeway

- Area planned for various uses: residential, commercial, industrial and tech corridor
- Growth requires high level of reliability
- Current transmission and sub-transmission systems do not have capacity to serve projected load in Laveen



City of Phoenix South Mountain Freeway Plans

Important transportation corridor that provides an easily accessible route to the east and west valley.

- City of Phoenix General Plan characterizes the area in Laveen Village near South Mountain Freeway as core for **large concentrations of employment and housing opportunities.**
- Areas west of the South Mountain Freeway are desirable locations for major development including:
 - Industrial
 - Technology
 - Warehouses
 - Office spaces
- Potential for high-wage jobs in technology, bioscience and light manufacturing, finance and other office and industrial type employment



Proposed Project

Project Scope

500kV/230kV/69 kV substation

- The initial build out will include a 230 kV & 69 kV yard
- The 500 kV yard will be constructed in the future

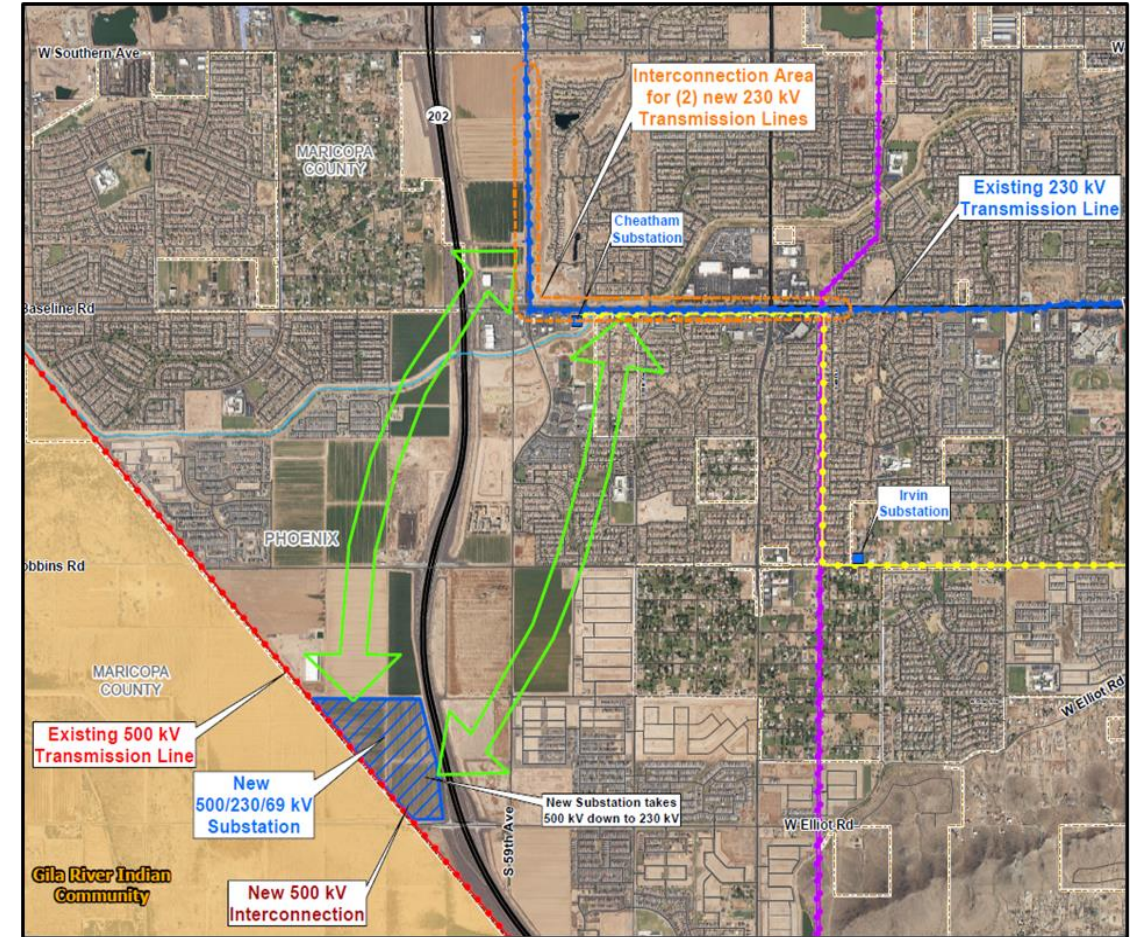
Two single-circuit 500 kV line ties at substation

- The 500 kV ties will be constructed in the future
- Will be less than a mile in length

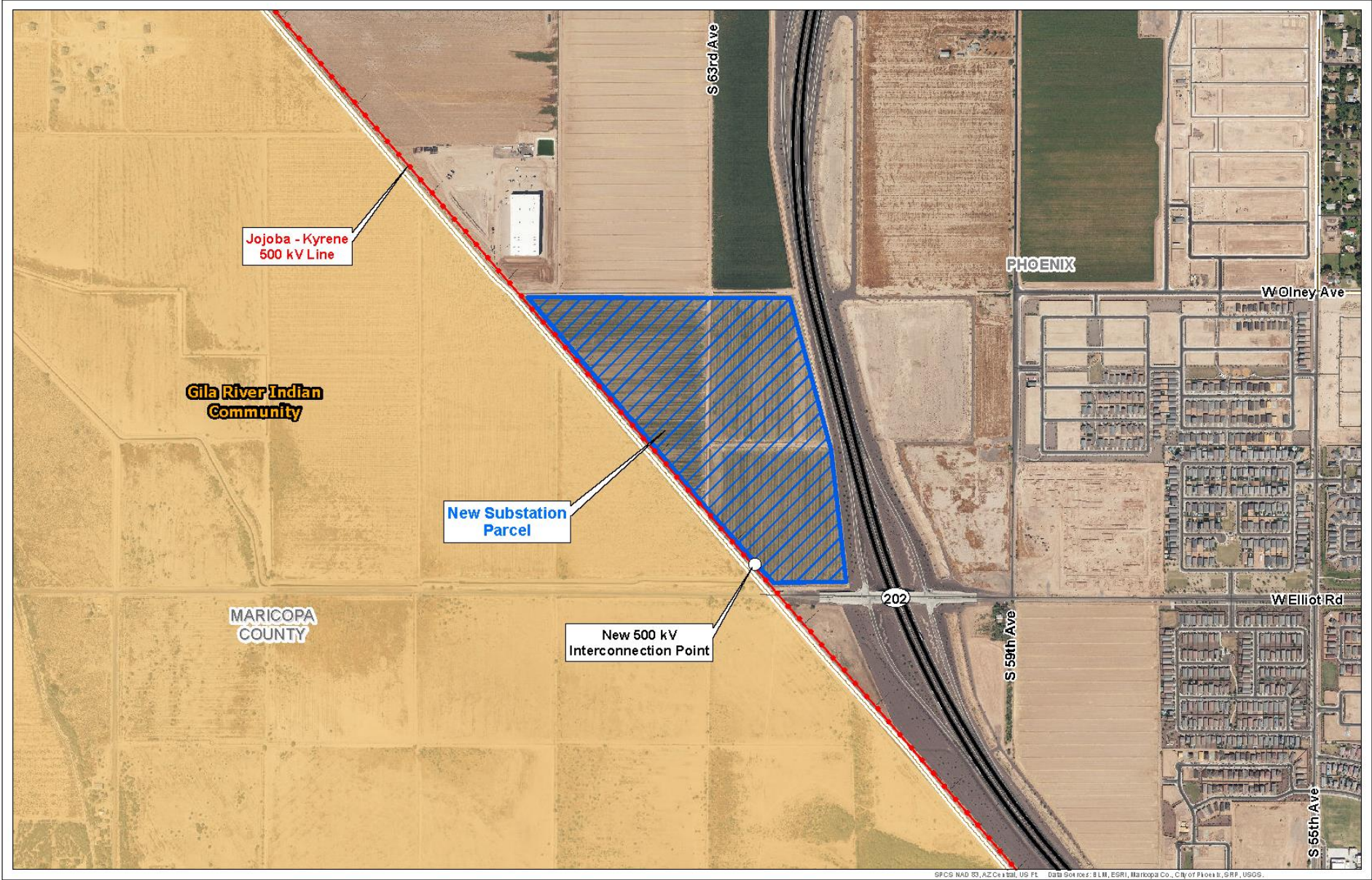
Two double-circuit 230 kV pole lines

- Steel 230 kV monopoles
- Approx. 2 –3 miles in length
- Each 230 kV pole line will require a 100' easement for construction and long-term maintenance of the transmission line
- Double Circuit 69 kV underbuilt will be planned for both 230 kV pole lines

****The 230kV transmission lines will require a Certificate of Environmental Compatibility (CEC)***



New 500/230/69 kV Substation



Substation Example



Existing 500 kV Line Near Future Substation Site



Potential Structure Types

**230 kV poles examples
with 69 kV underbuild**

Typical height 120-160 feet tall

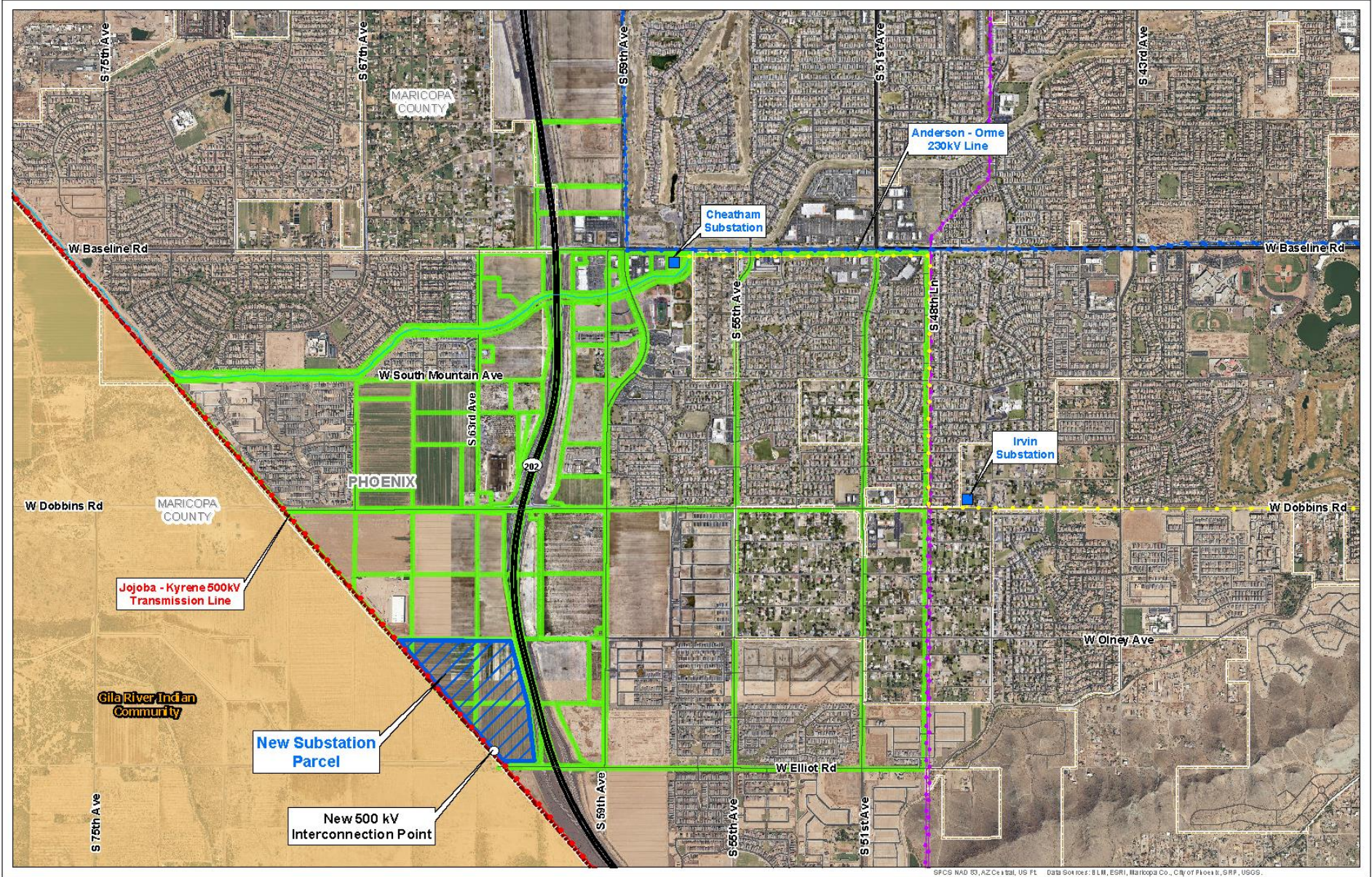
***Will require a CEC from ACC**



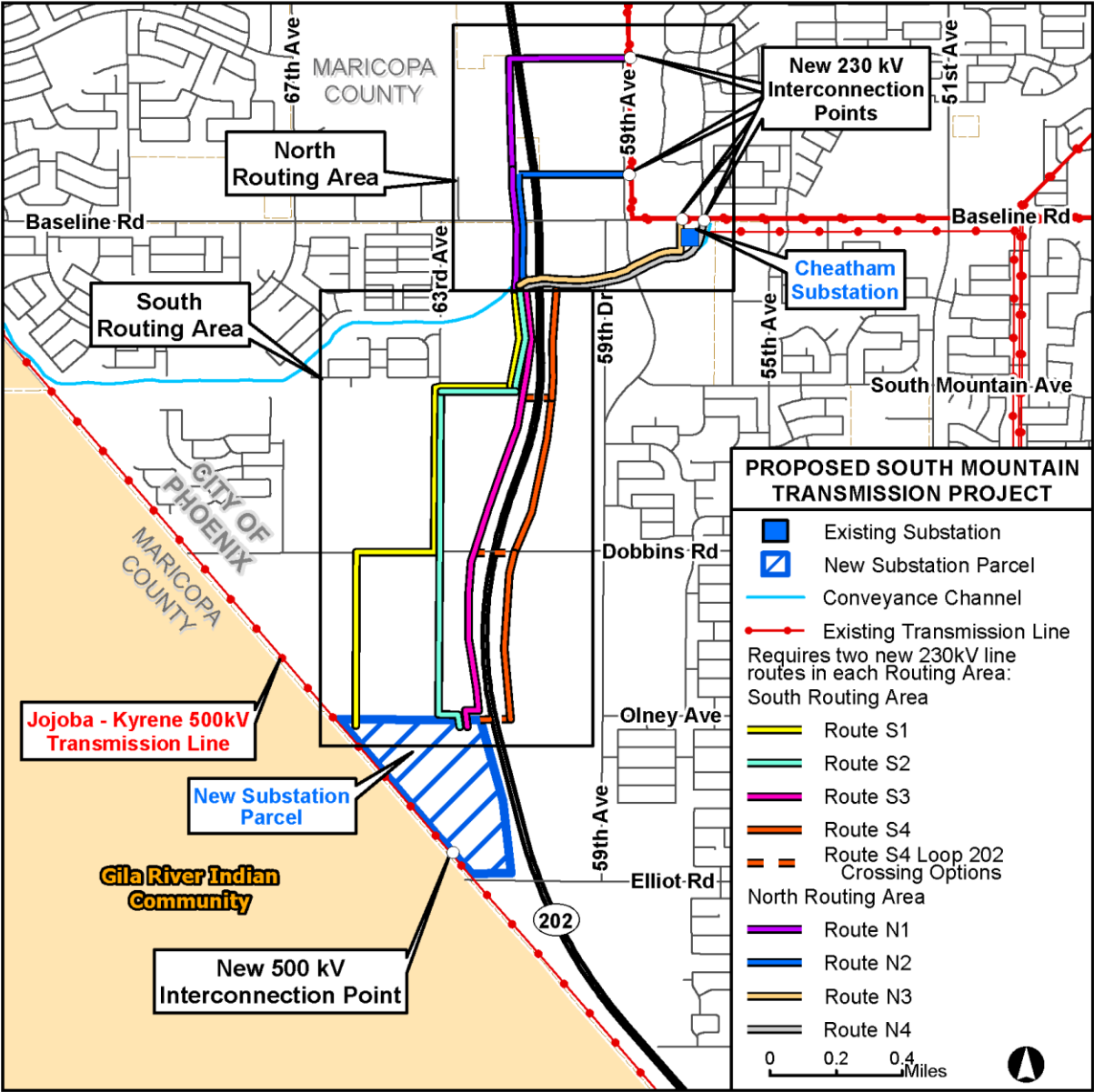
Existing 230 kV Line @ Baseline Rd.



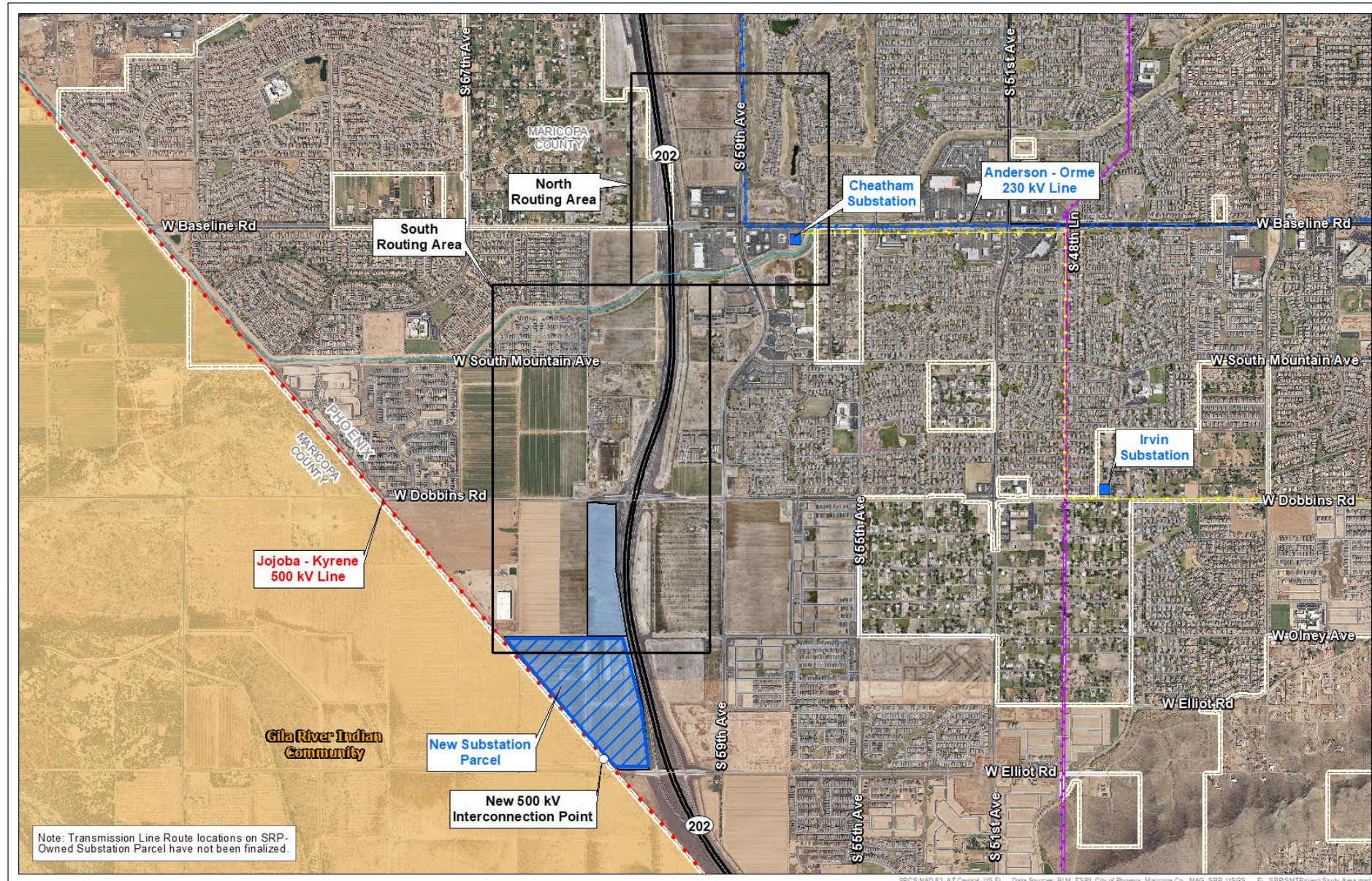
Routing Opportunities



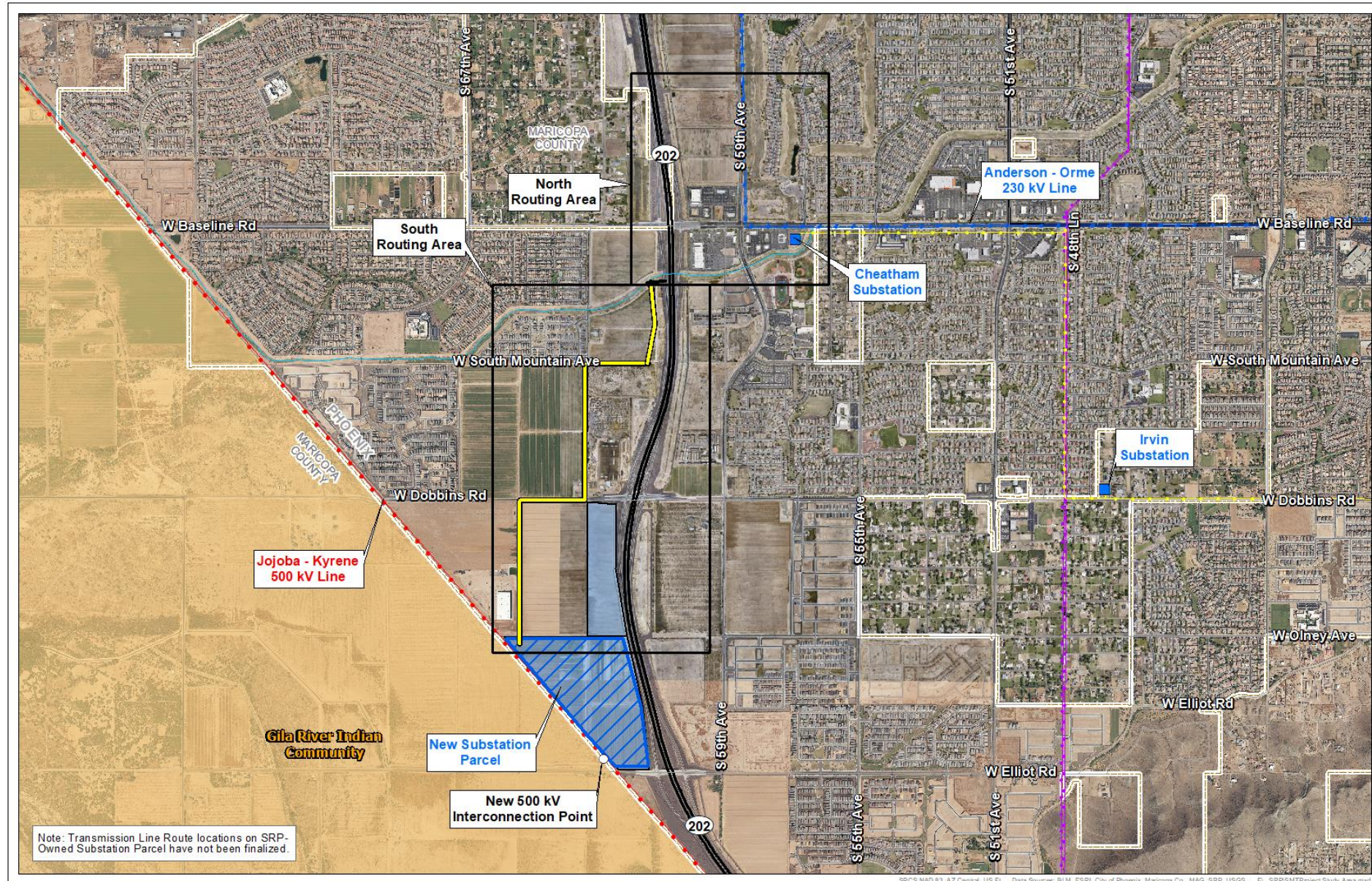
Project Routes (Project Requires Two Routes in each Routing Area)



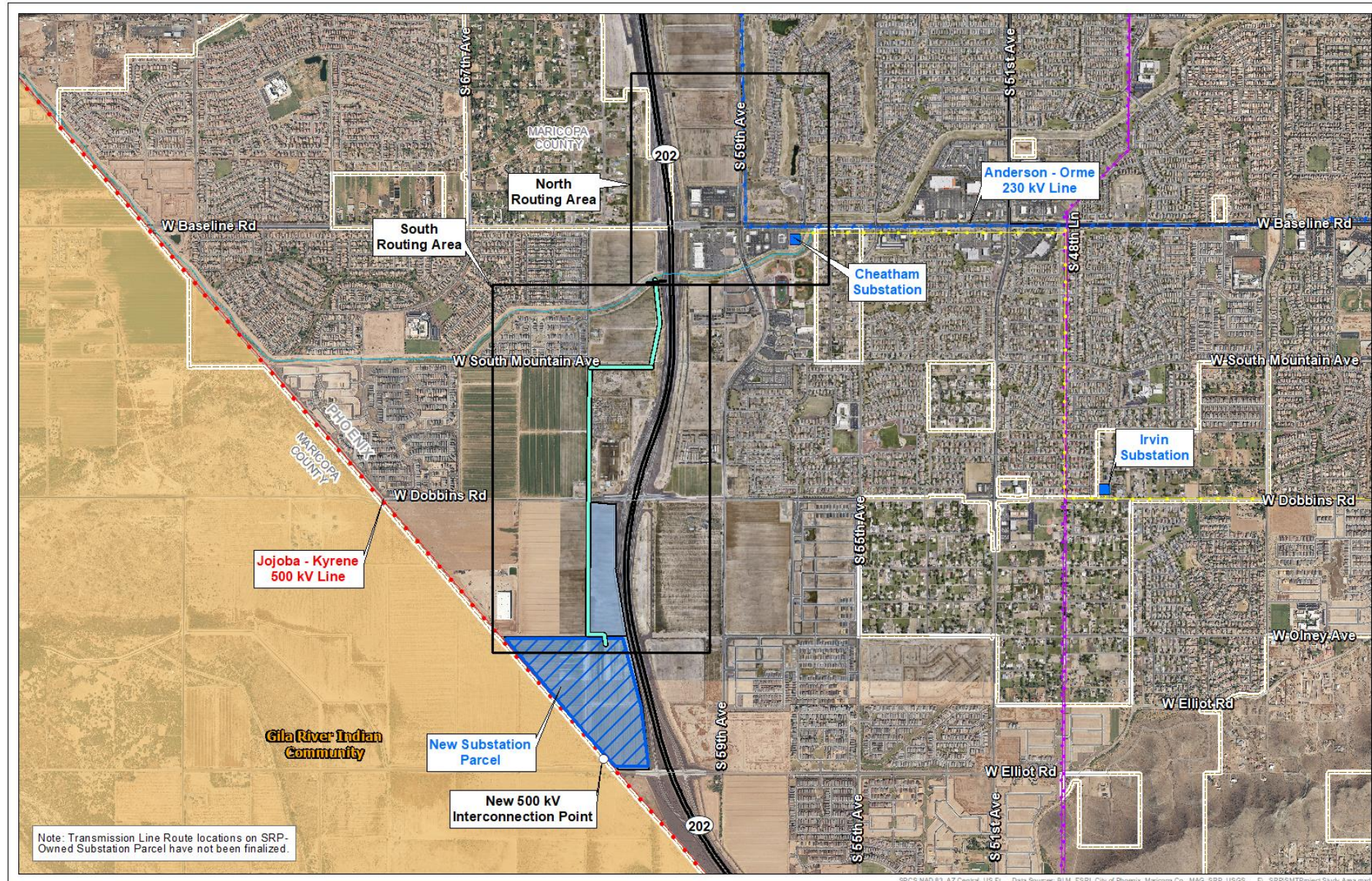
Routing Areas (Project Requires Two Routes in Each Routing Area)



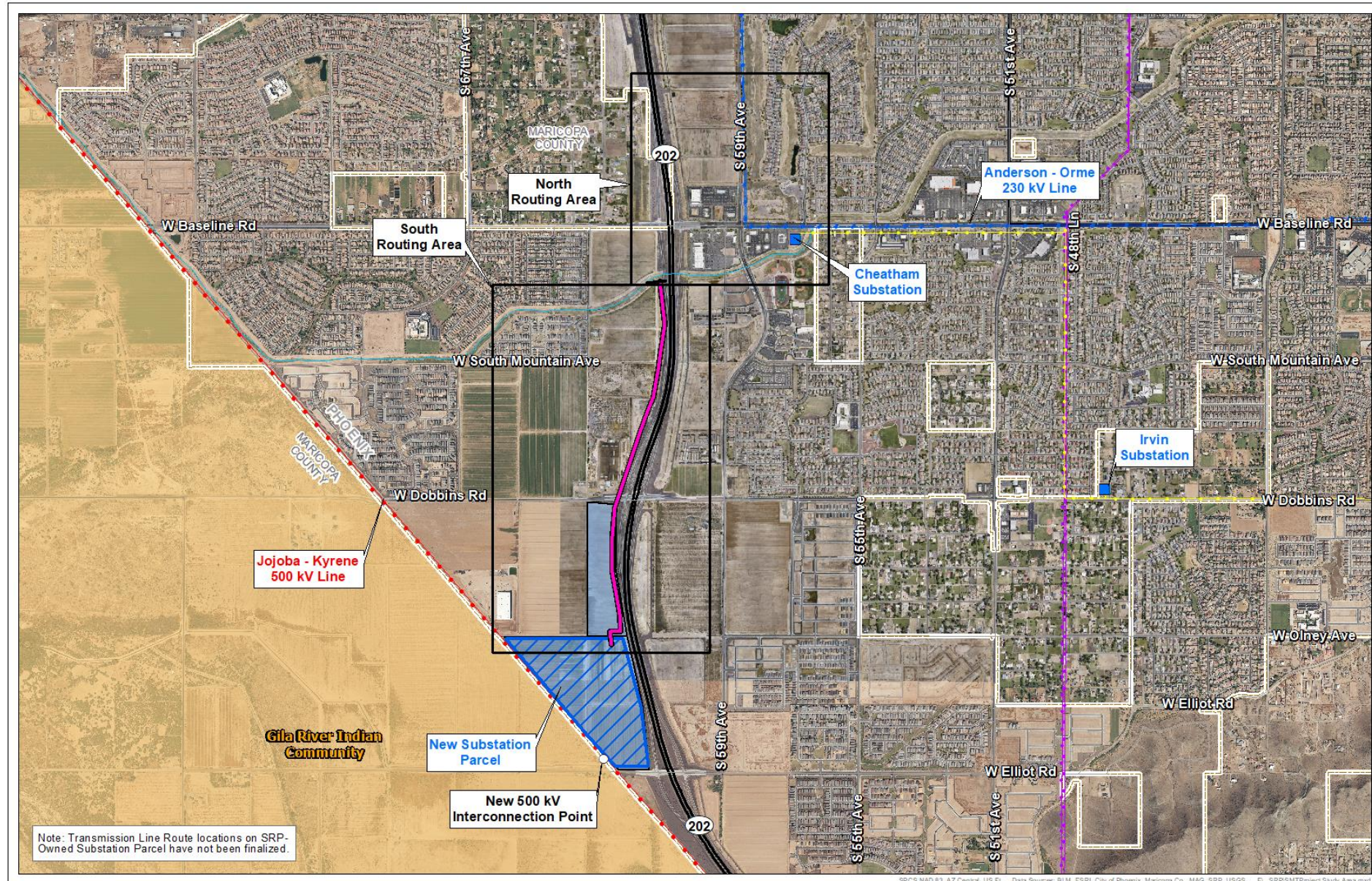
Route S1 (Project Requires Two Routes in Each Routing Area)



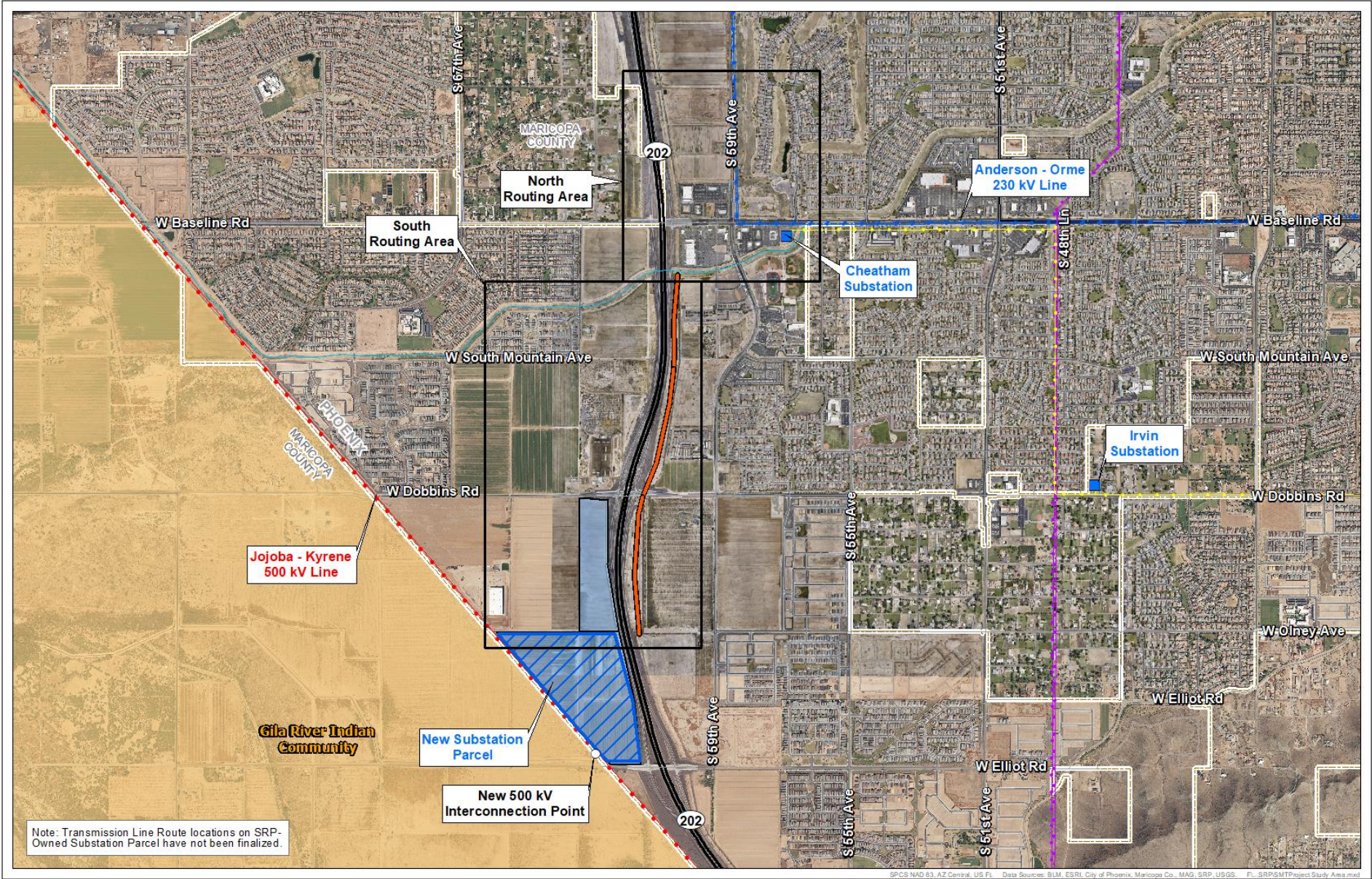
Route S2 (Project Requires Two Routes in Each Routing Area)



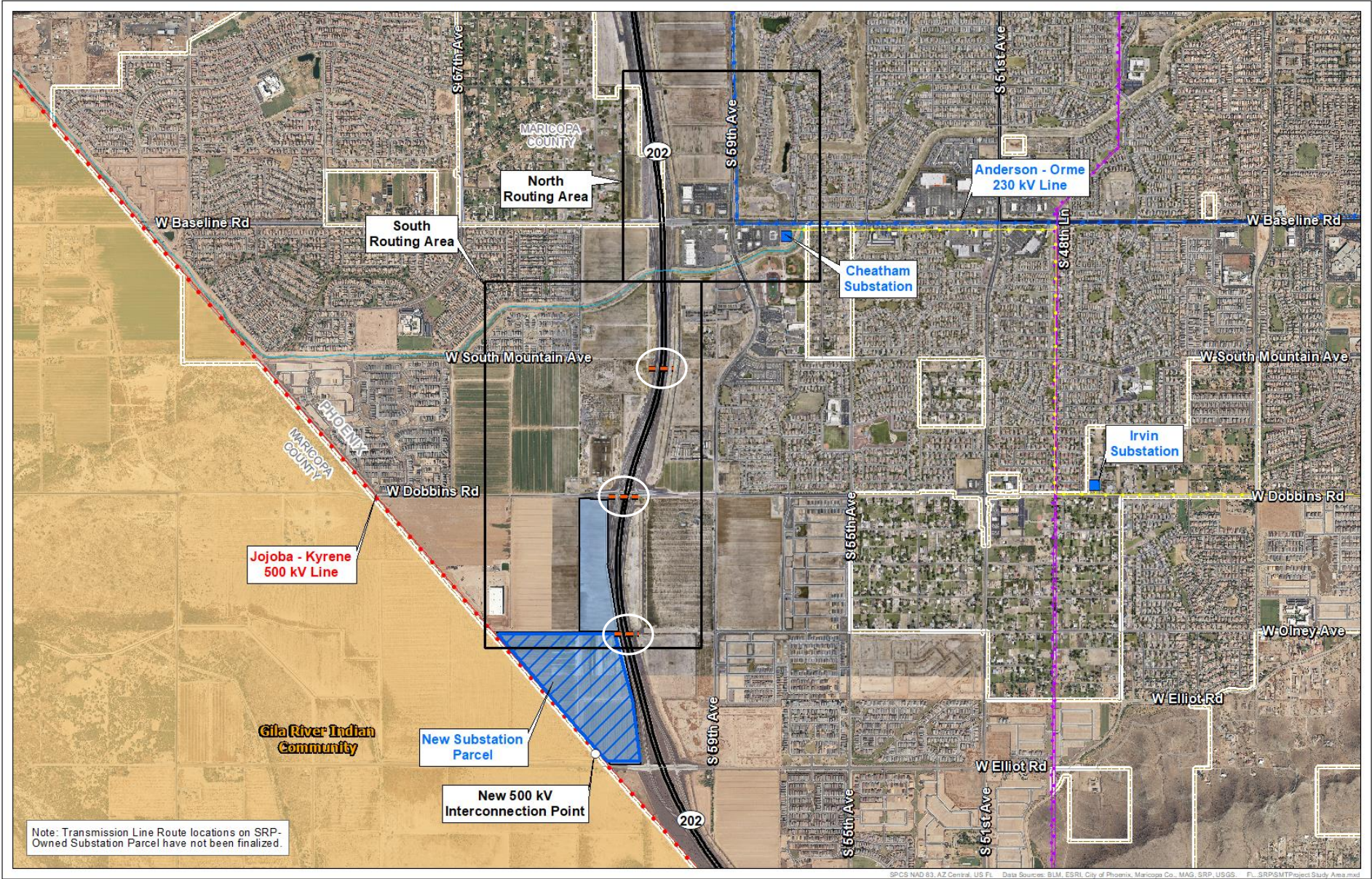
Route S3 (Project Requires Two Routes in Each Routing Area)



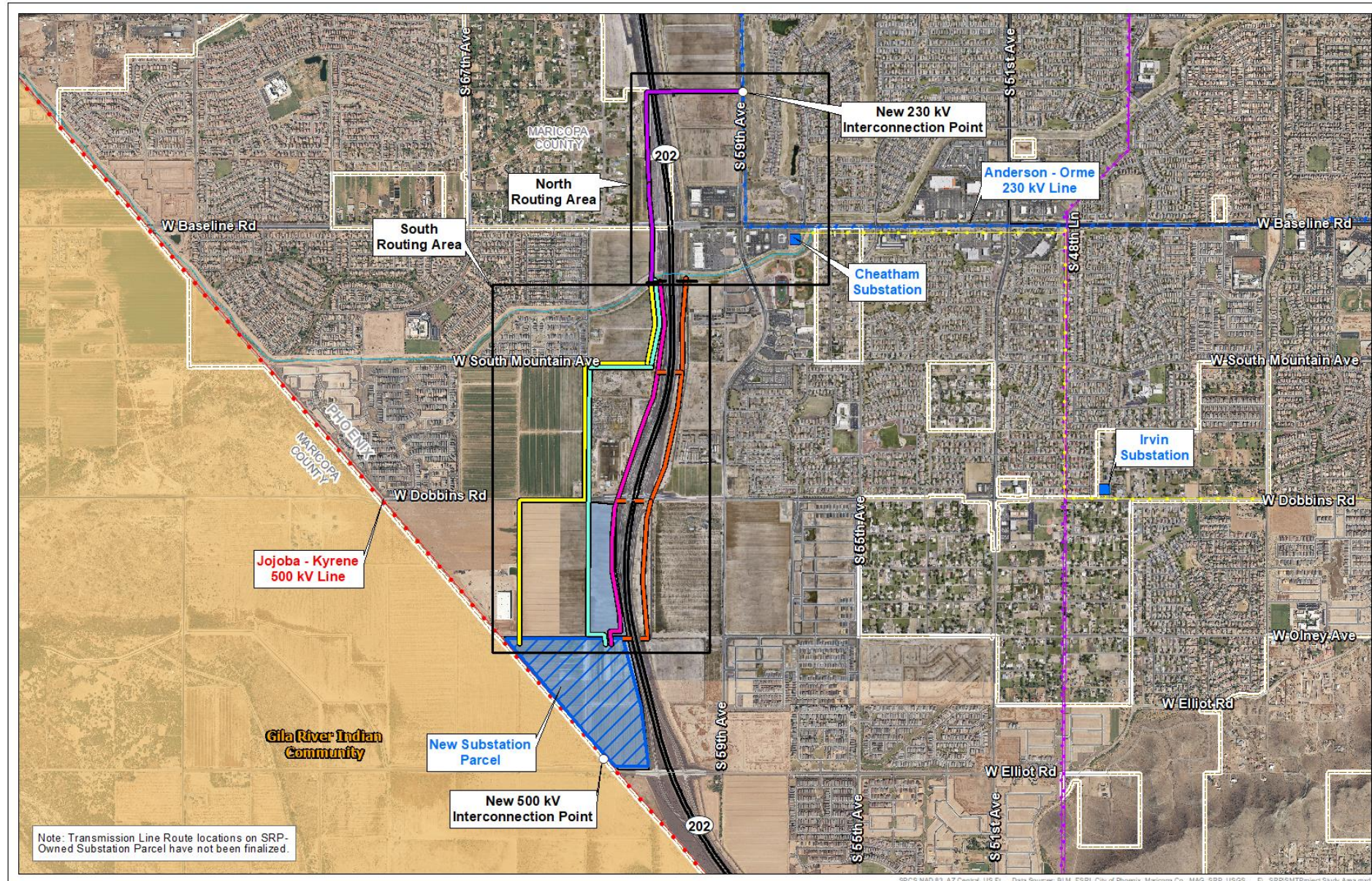
Route S4 (Project Requires Two Routes in Each Routing Area)



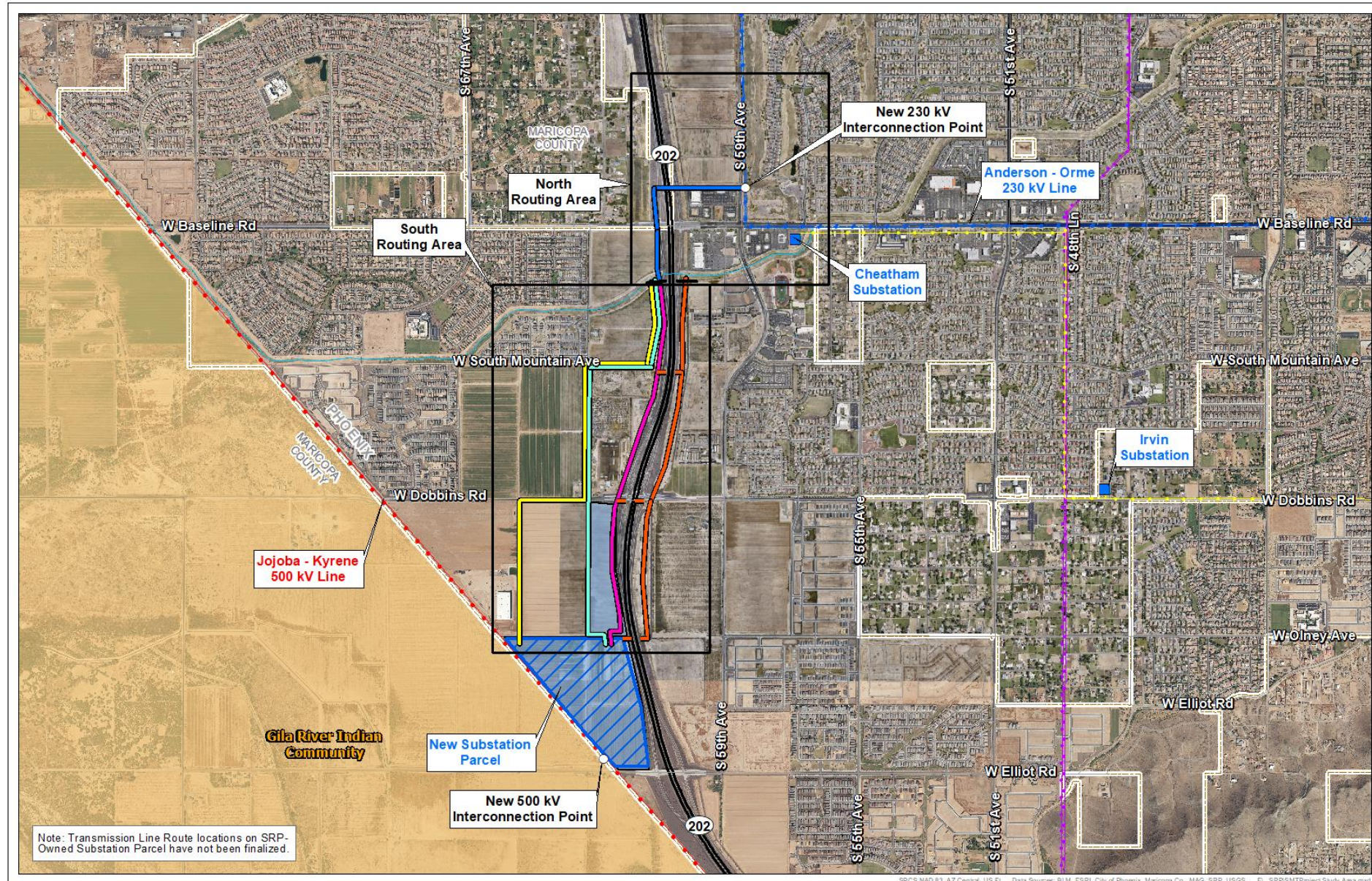
Loop 202 Crossings



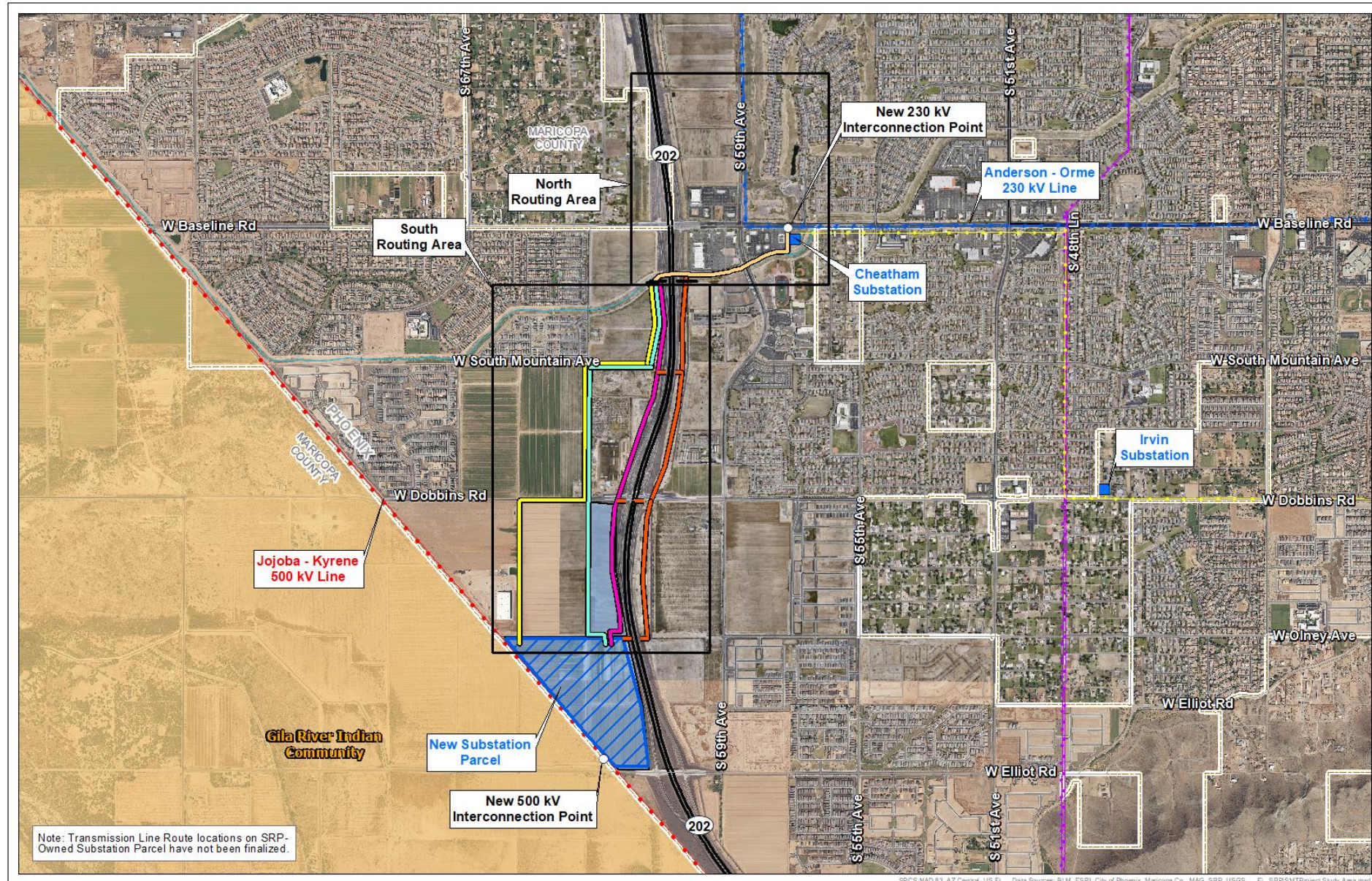
Route N1 (Project Requires Two Routes in Each Routing Area)



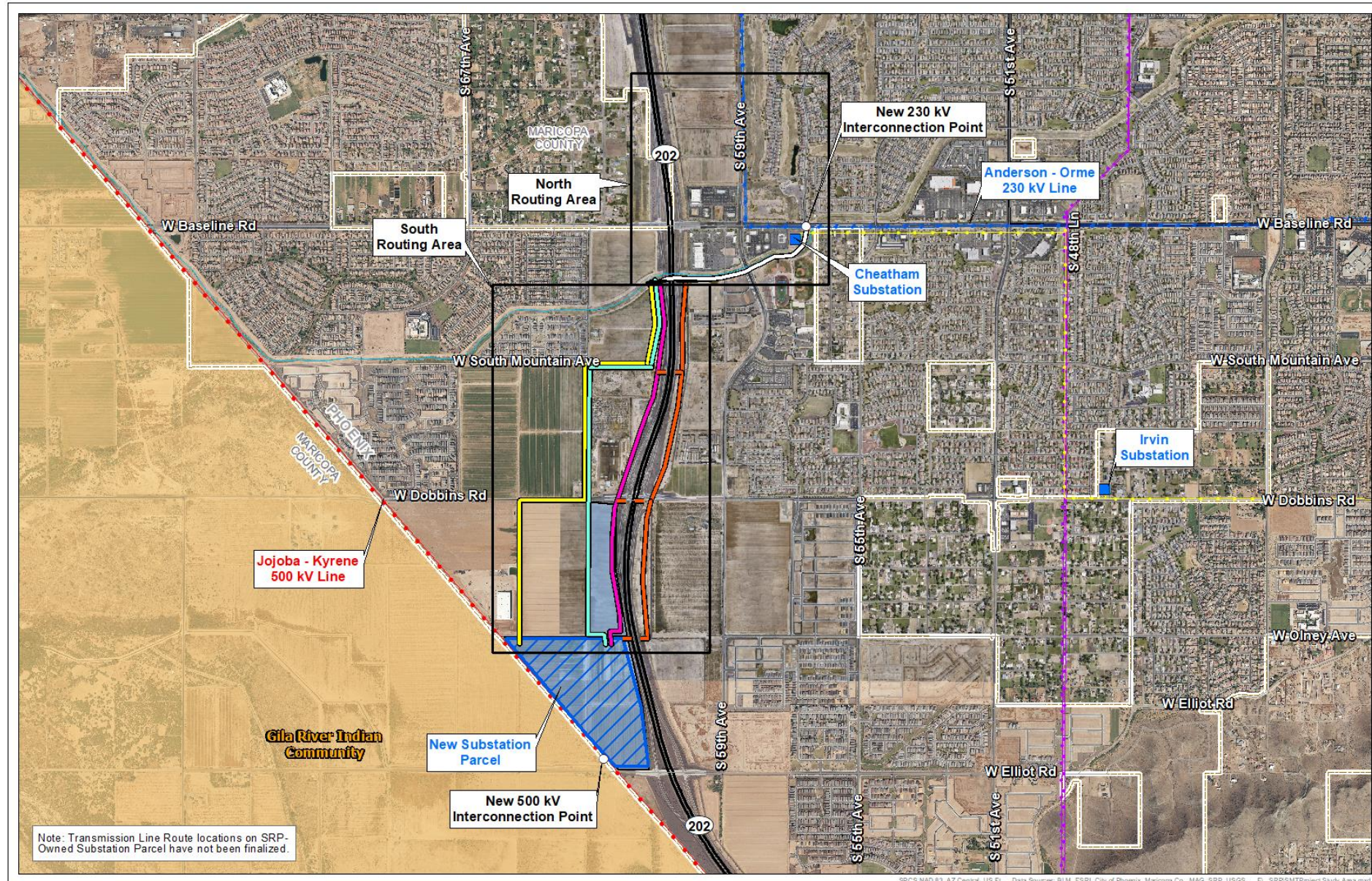
Route N2 (Project Requires Two Routes in Each Routing Area)



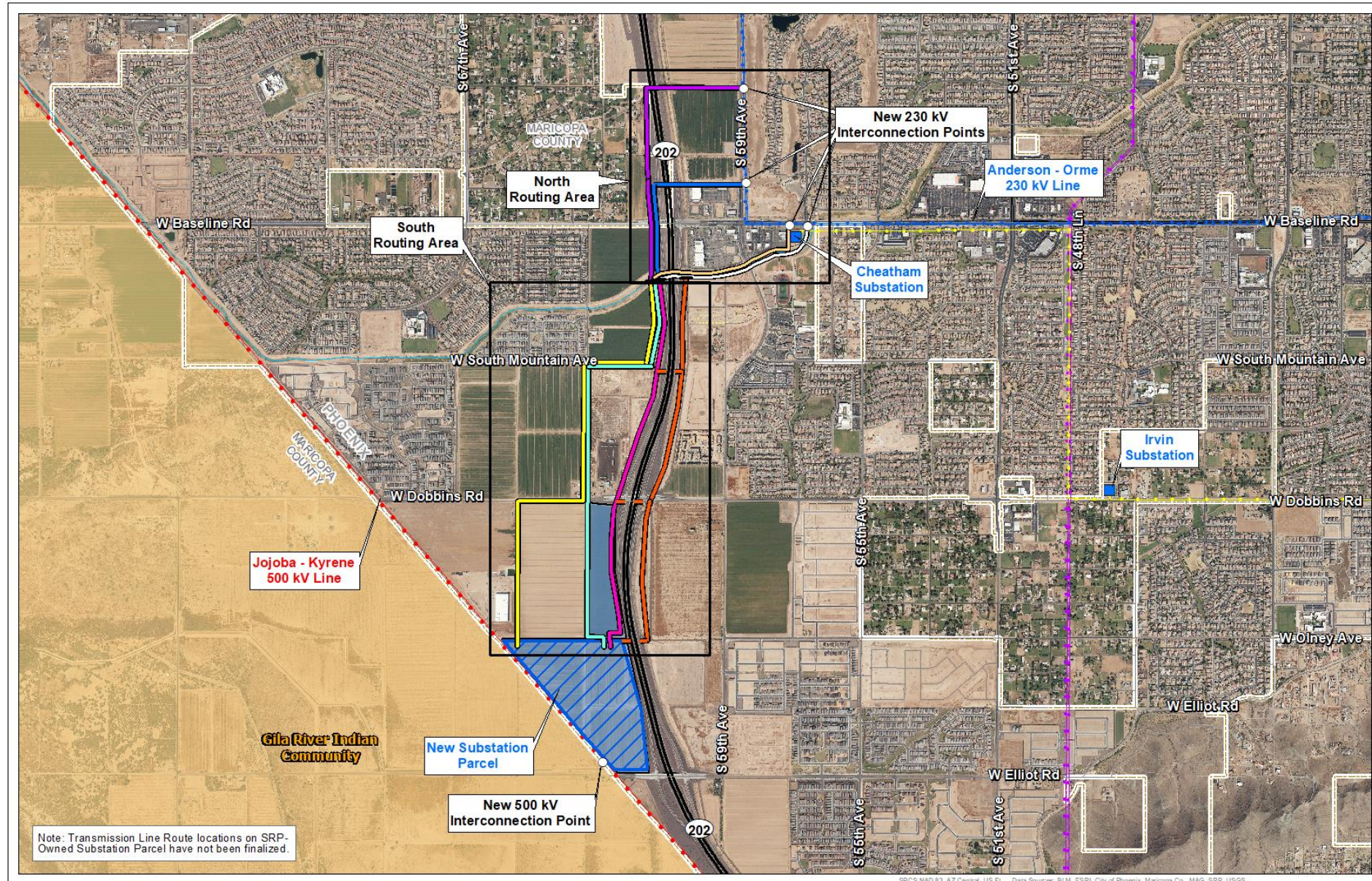
Route N3 (Project Requires Two Routes in Each Routing Area)



Route N4 (Project Requires Two Routes in Each Routing Area)

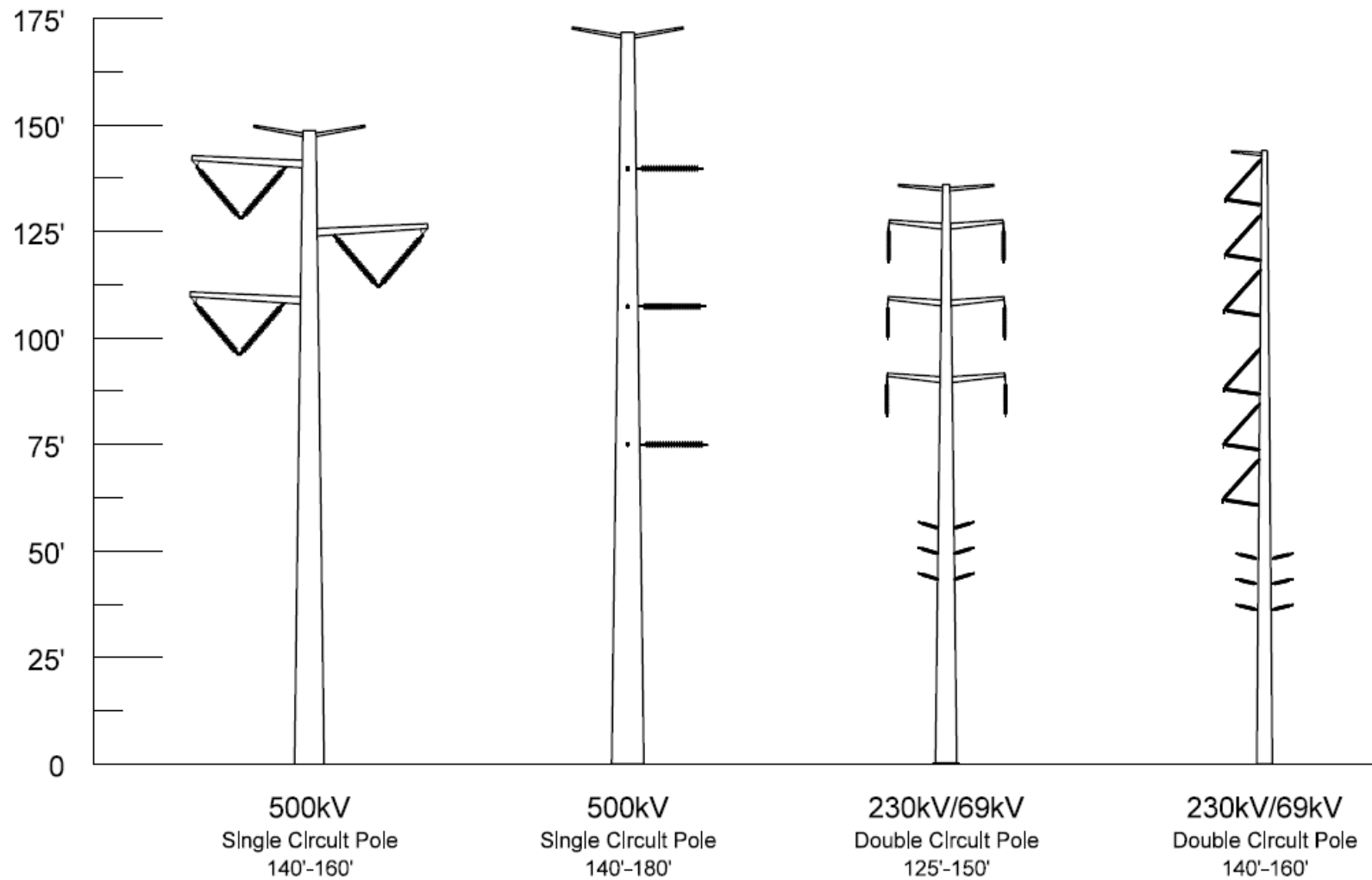


Project Routes (Project Requires Two Routes in Each Routing Area)

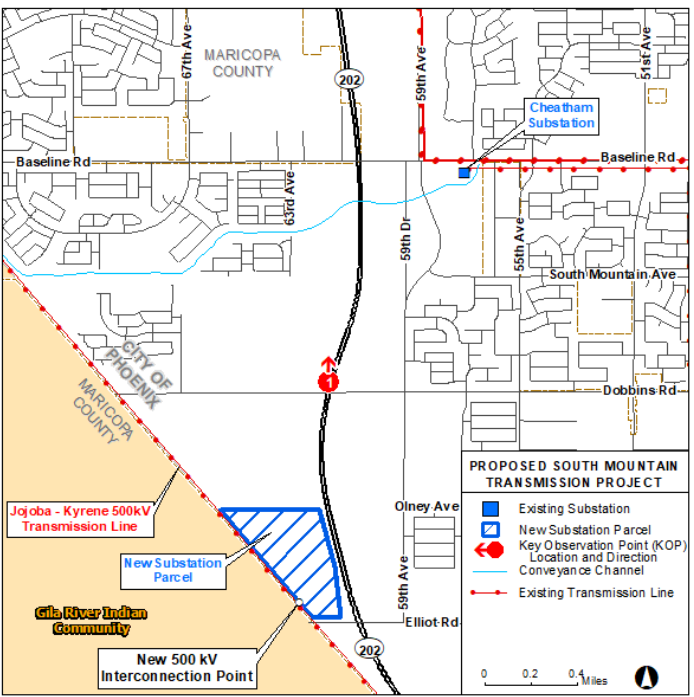


Engineering and Construction

Typical Structure Types

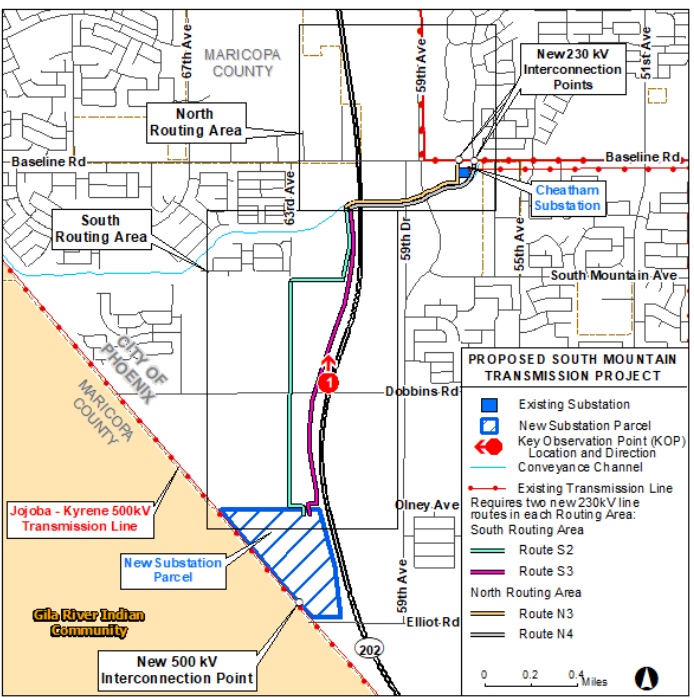


Represents SRP's typical structures. Actual structure types for this project have not yet been determined and may vary depending on location.



**Existing Conditions
Loop 202 Looking North**

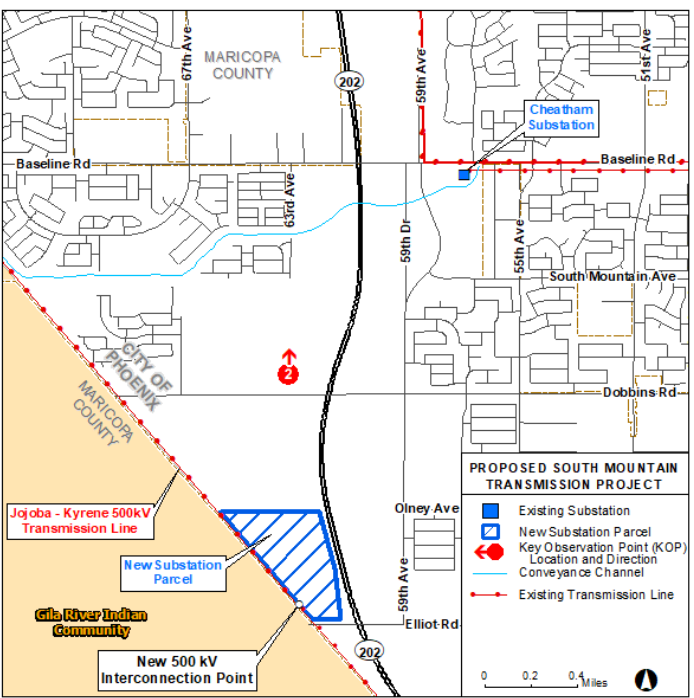
KOP #1



**Proposed Conditions, Routes S2, S3, N3, N4
Loop 202 Looking North**

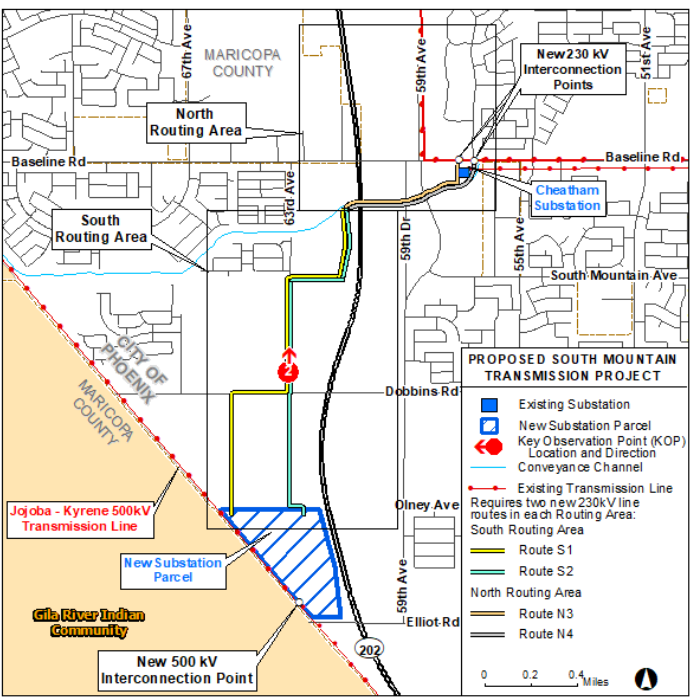
KOP #1

This is for graphic representation only, and exact structure locations have not been determined.



Existing Conditions
South 63rd Avenue Looking North

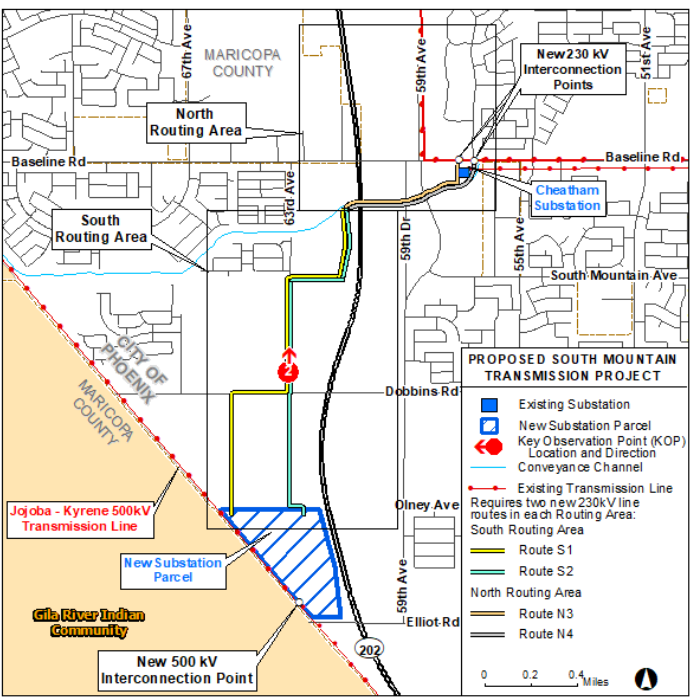
KOP #2



**Proposed Conditions, Routes S1, S2, N3, N4
South 63rd Avenue Looking North**

KOP #2

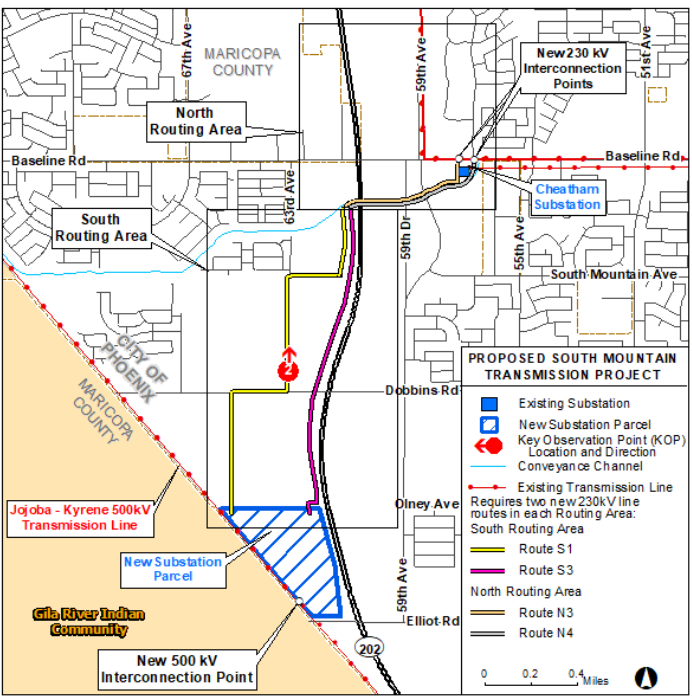
This is for graphic representation only, and exact structure locations have not been determined.



**Proposed Conditions, Routes S1, S2, N3, N4
South 63rd Avenue Looking North**

KOP #2

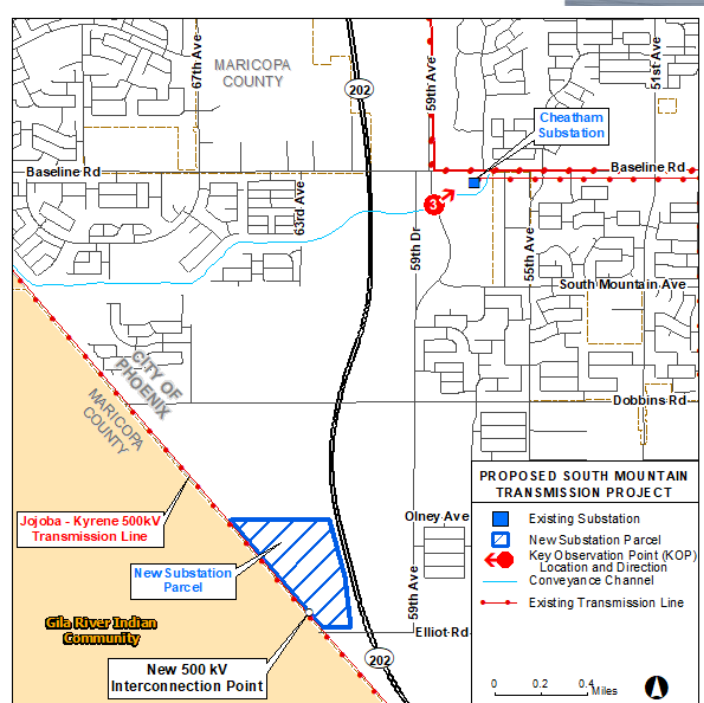
This is for graphic representation only, and exact structure locations have not been determined.



**Proposed Conditions, Routes S1, (S3), N3, N4
South 63rd Avenue Looking North**

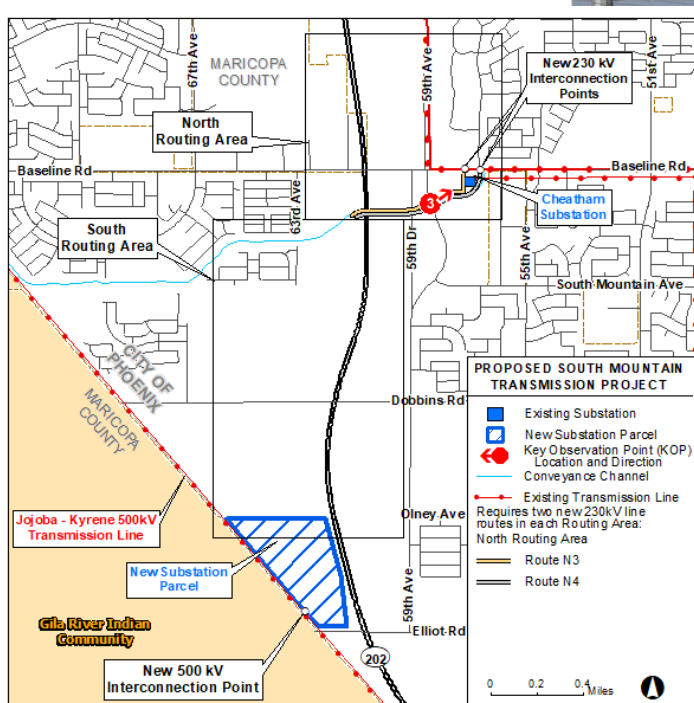
KOP #2

This is for graphic representation only, and exact structure locations have not been determined.



**Existing Conditions
Conveyance Channel Looking Northeast**

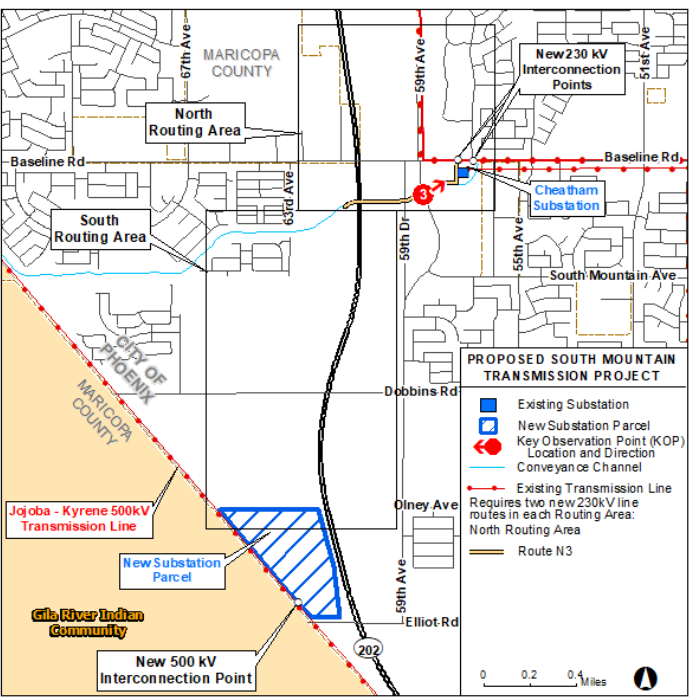
KOP #3



**Proposed Conditions, Routes N3, N4
Conveyance Channel Looking Northeast**

KOP #3

This is for graphic representation only, and exact structure locations have not been determined.

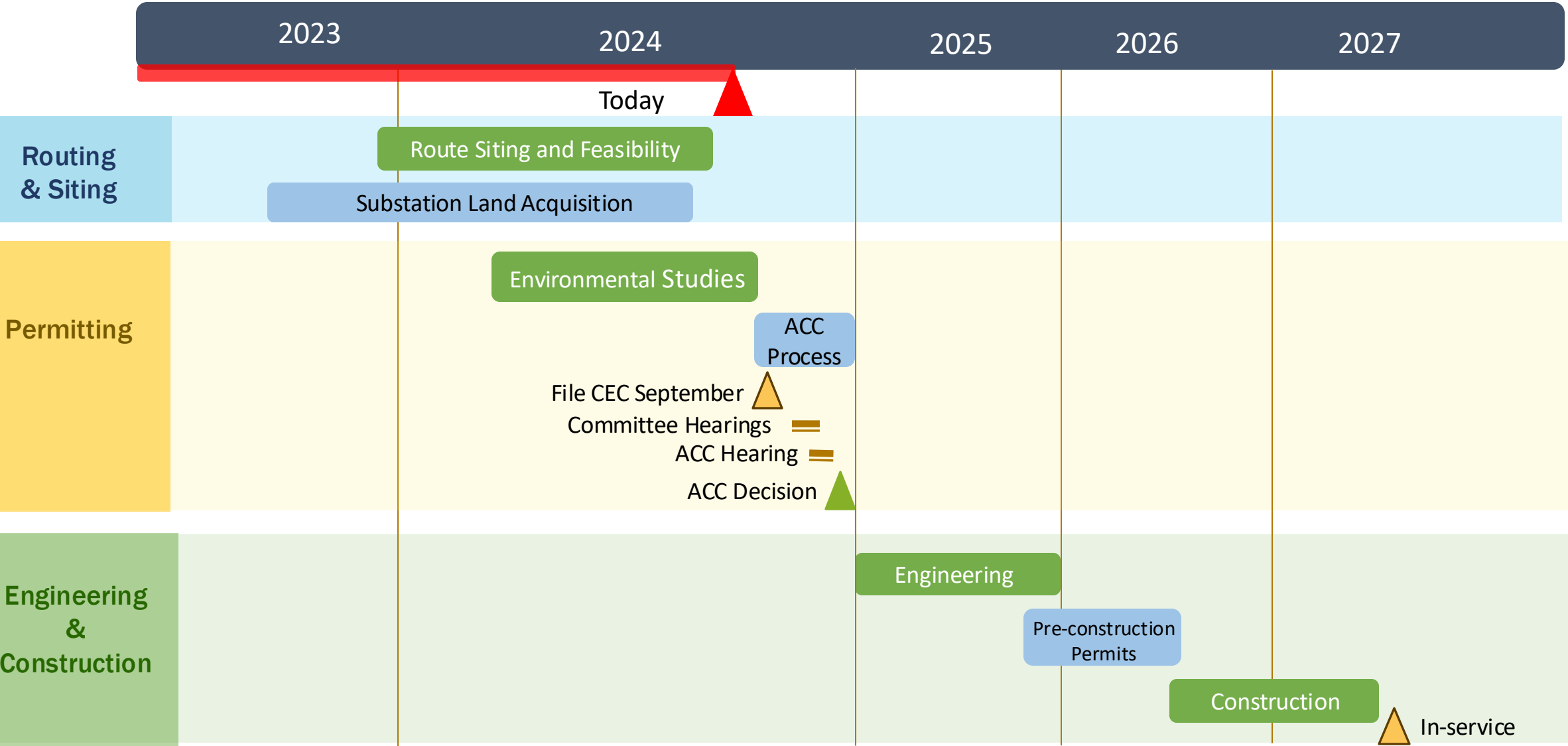


**Proposed Conditions, Route N3
Conveyance Channel Looking Northeast**

KOP #3

This is for graphic representation only, and exact structure locations have not been determined.

Development Timeline



Siting, Environmental and Regulatory Process

Statutory Requirements: Environmental

Air Quality

Biological Resources

Cultural and Historical Resources

Geology and Soils

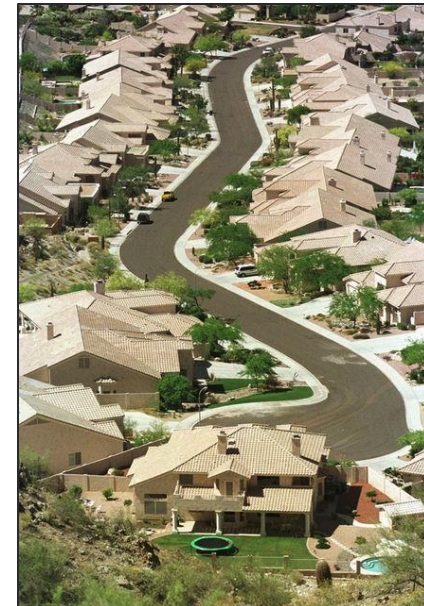
Hydrology

Land Use

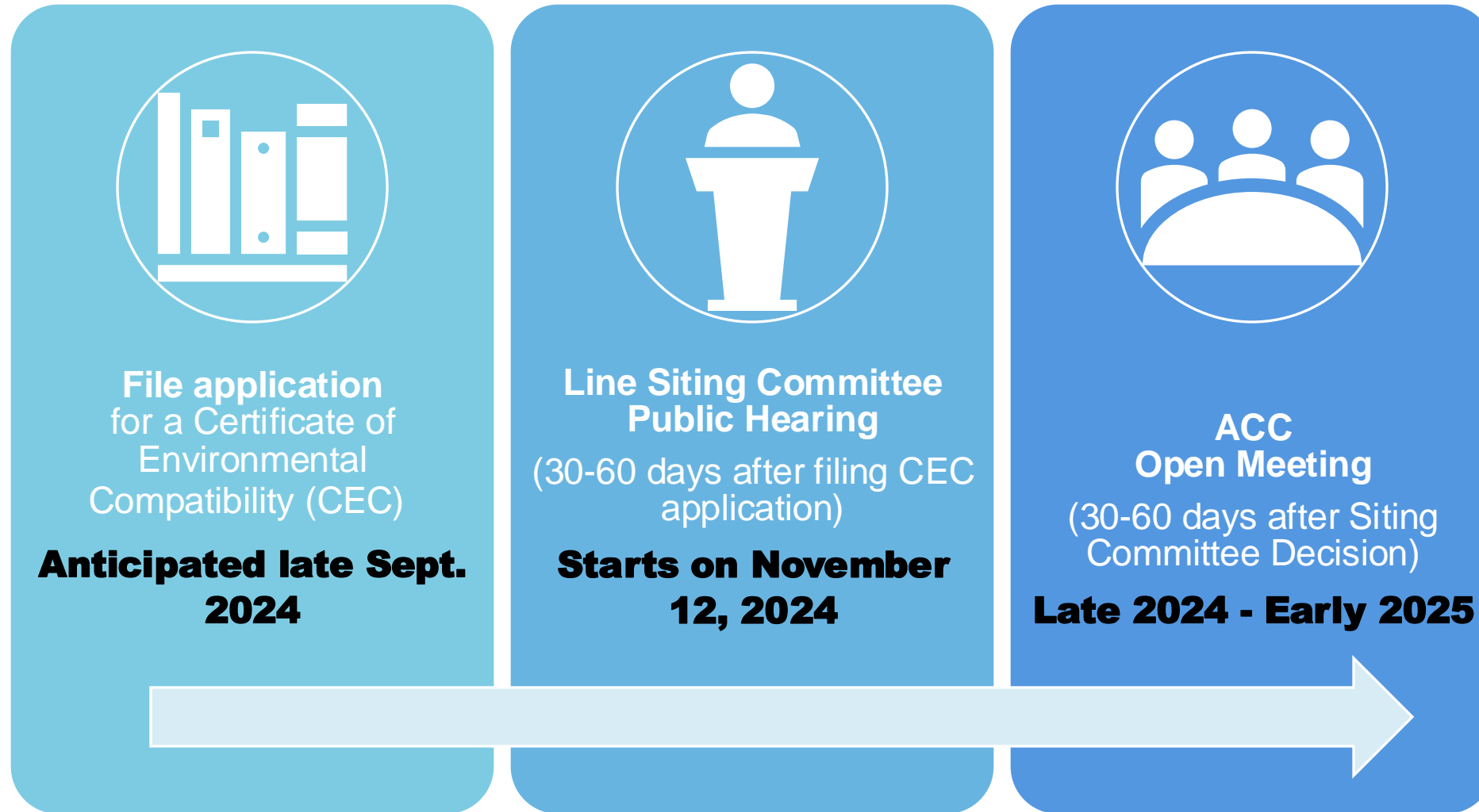
Noise

Recreation

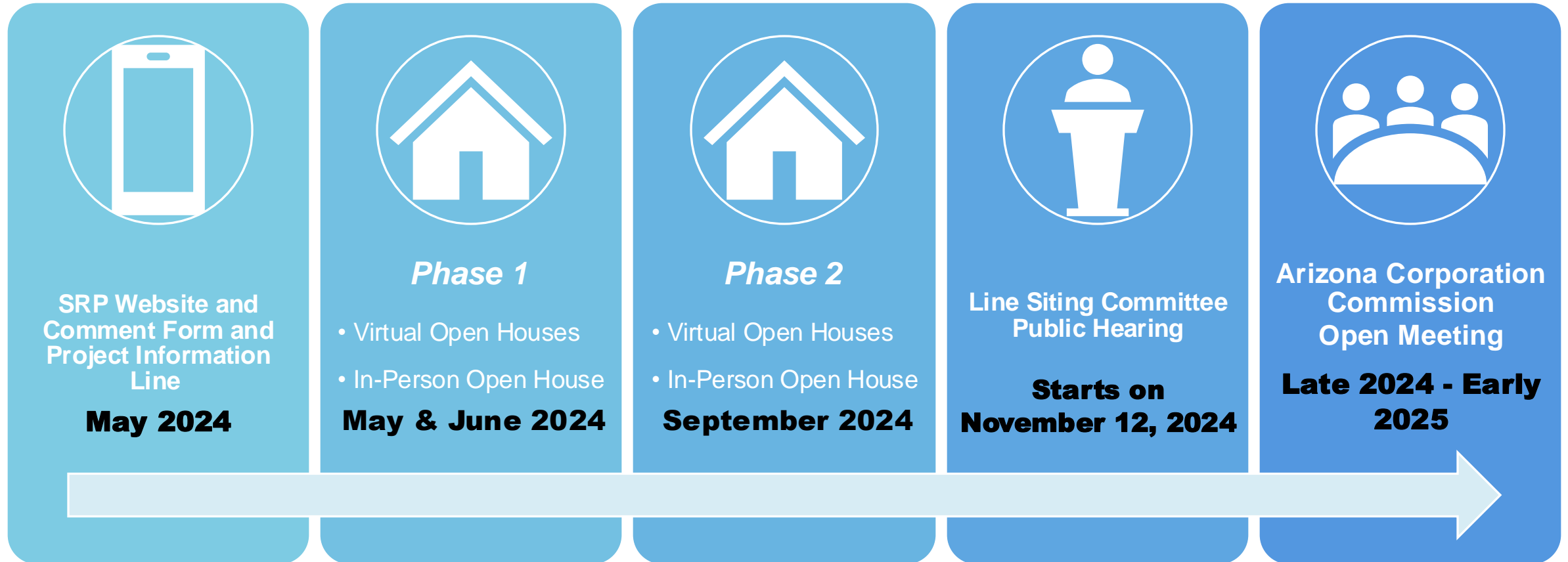
Visual and Aesthetics



Arizona Corporation Commission (ACC) Siting Process



Opportunities for Public Input



www.srp.net/SMT
1-855-584-1484

Phase 2 Open Houses

Virtual Open House

September 5, 2024

12:00 pm & 5:30 pm

In-Person Open House

September 10, 2024

4:30-6:30 pm

Ice cream truck at 4:00 pm

(Cesar Chavez Community Center)

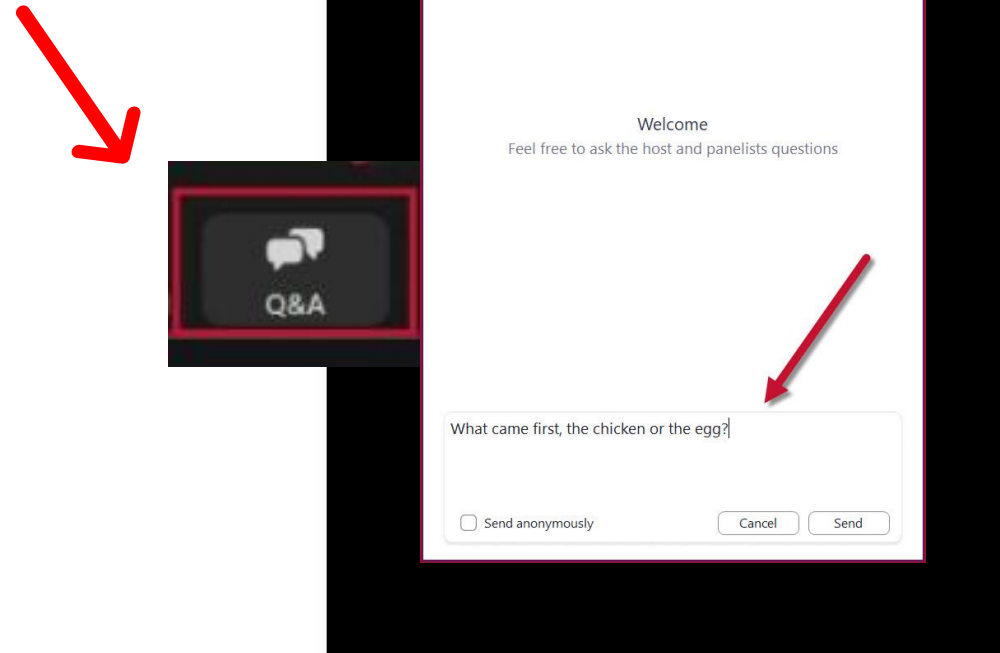
Open House Sign Up



Questions

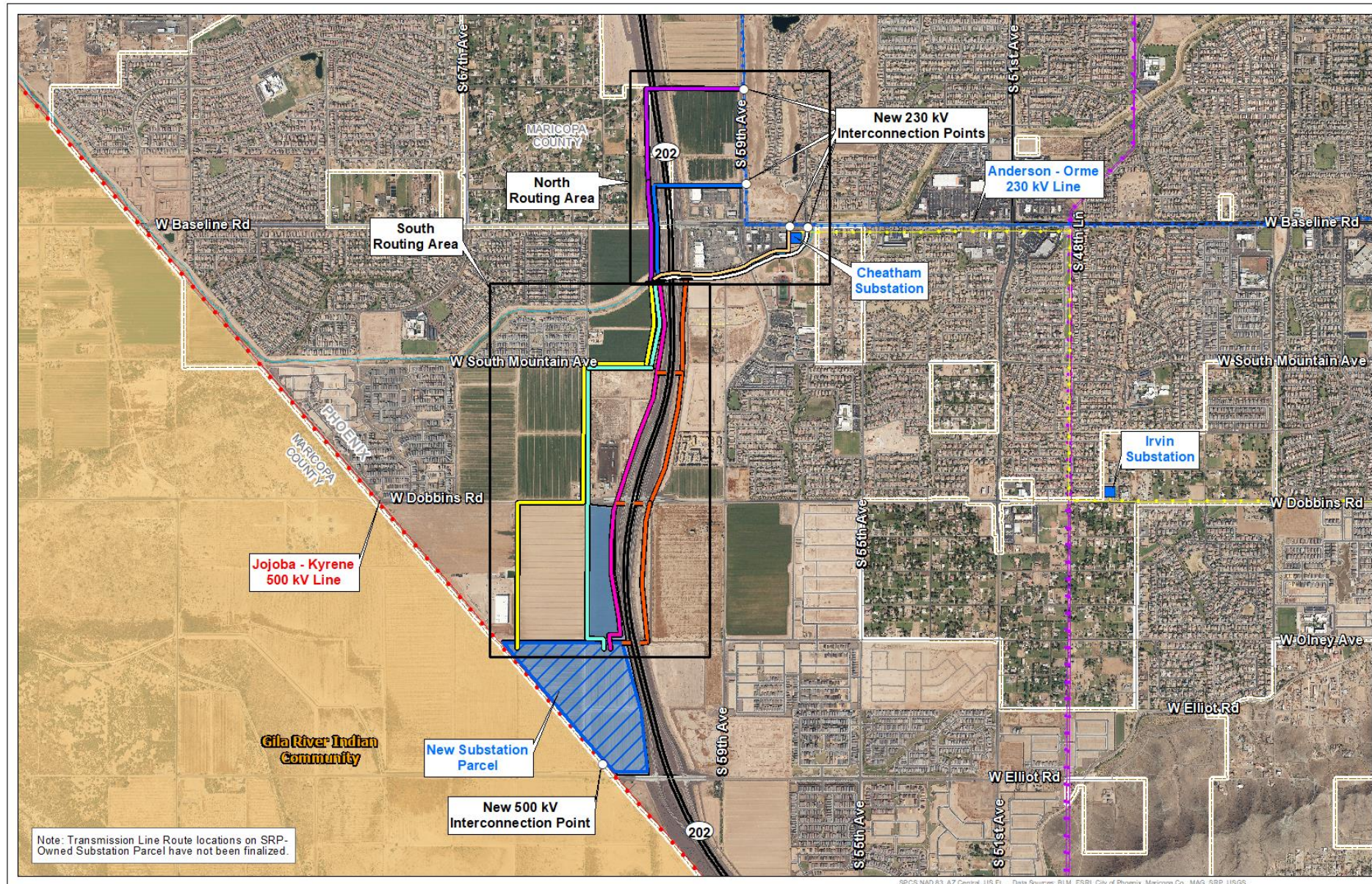
- Use the Q&A Feature to type in questions
- Can ask questions throughout the presentation
- We will respond to as many questions as we can

*Click "Q&A" at
bottom of screen*

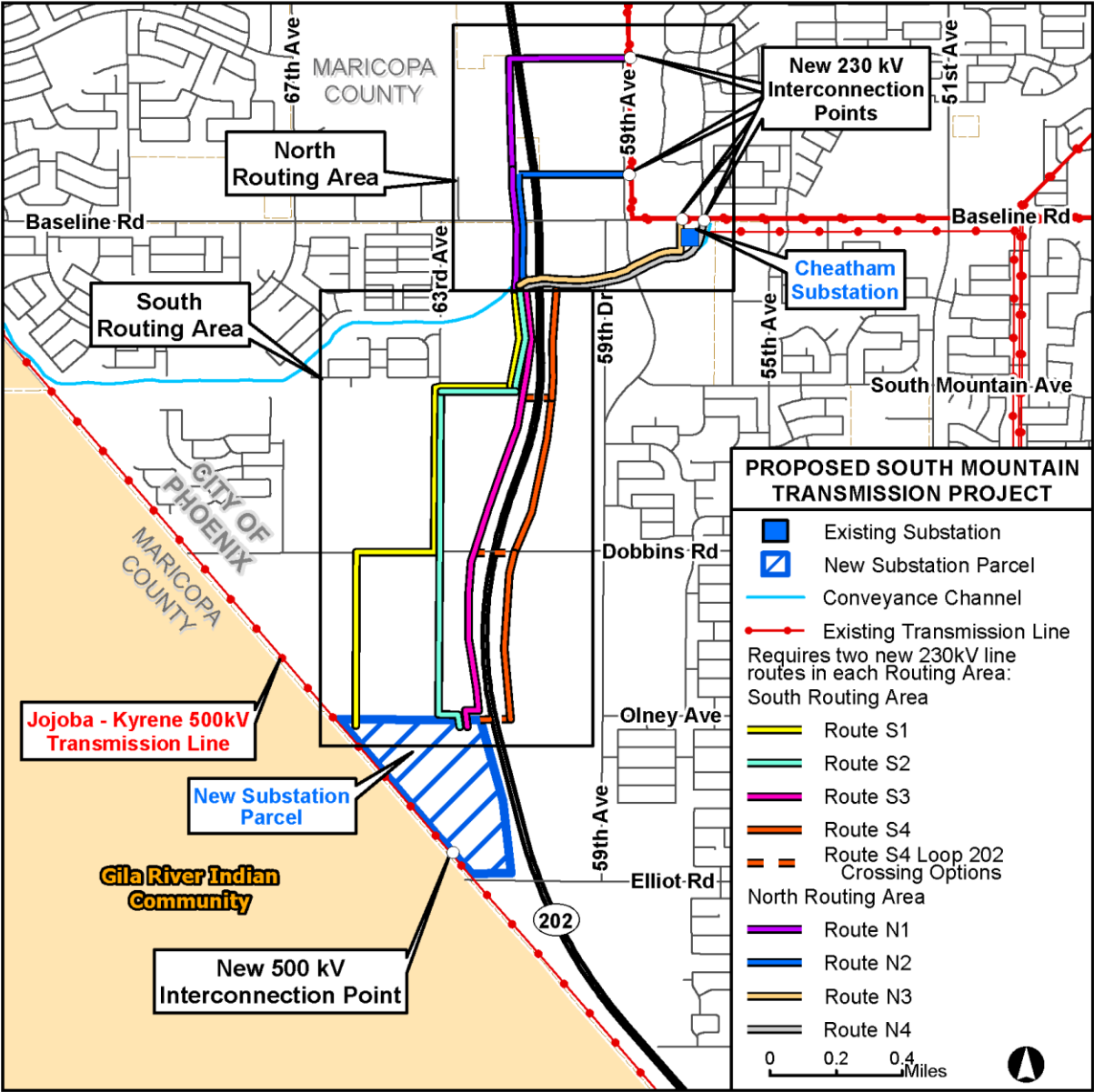


www.srp.net/SMT
1-855-584-1484

Project Routes (Project Requires Two Routes in each Routing Area)



Project Routes (Project Requires Two Routes in each Routing Area)



thank you!

Postcard #2 (Project Requires Two Routes in each Routing Area)

