

# Marigold Energy Center

Virtual Open House

**Welcome**

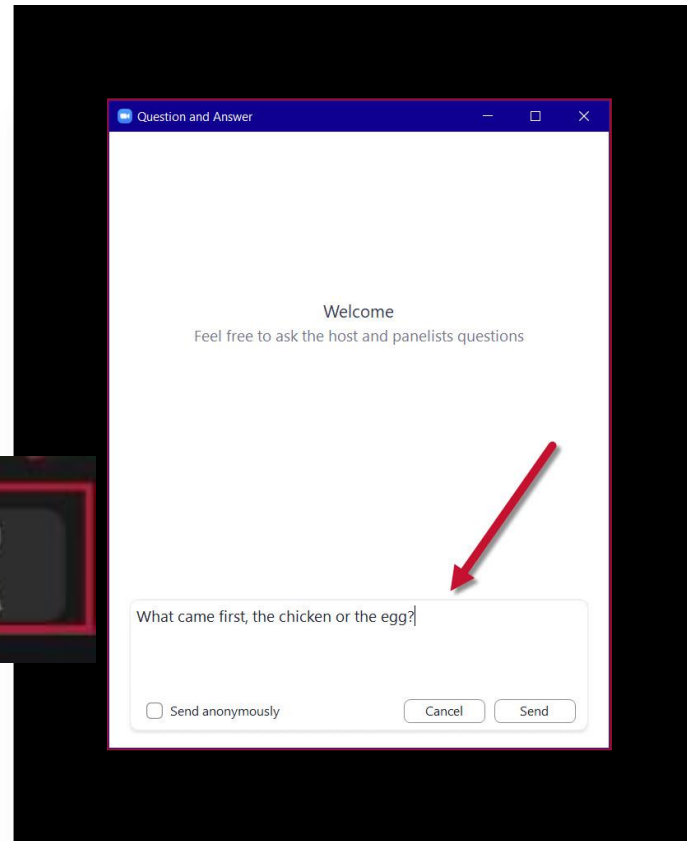
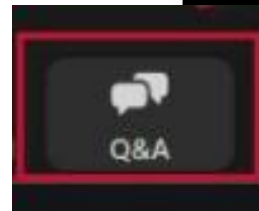
# Agenda

- Introductions
- Project Overview Presentation
- Questions & Answers via Q&A Function

# We want to hear from you.

- Use the Q&A Feature to type in questions
- Ask questions throughout the presentation
- We will respond to as many questions as we can

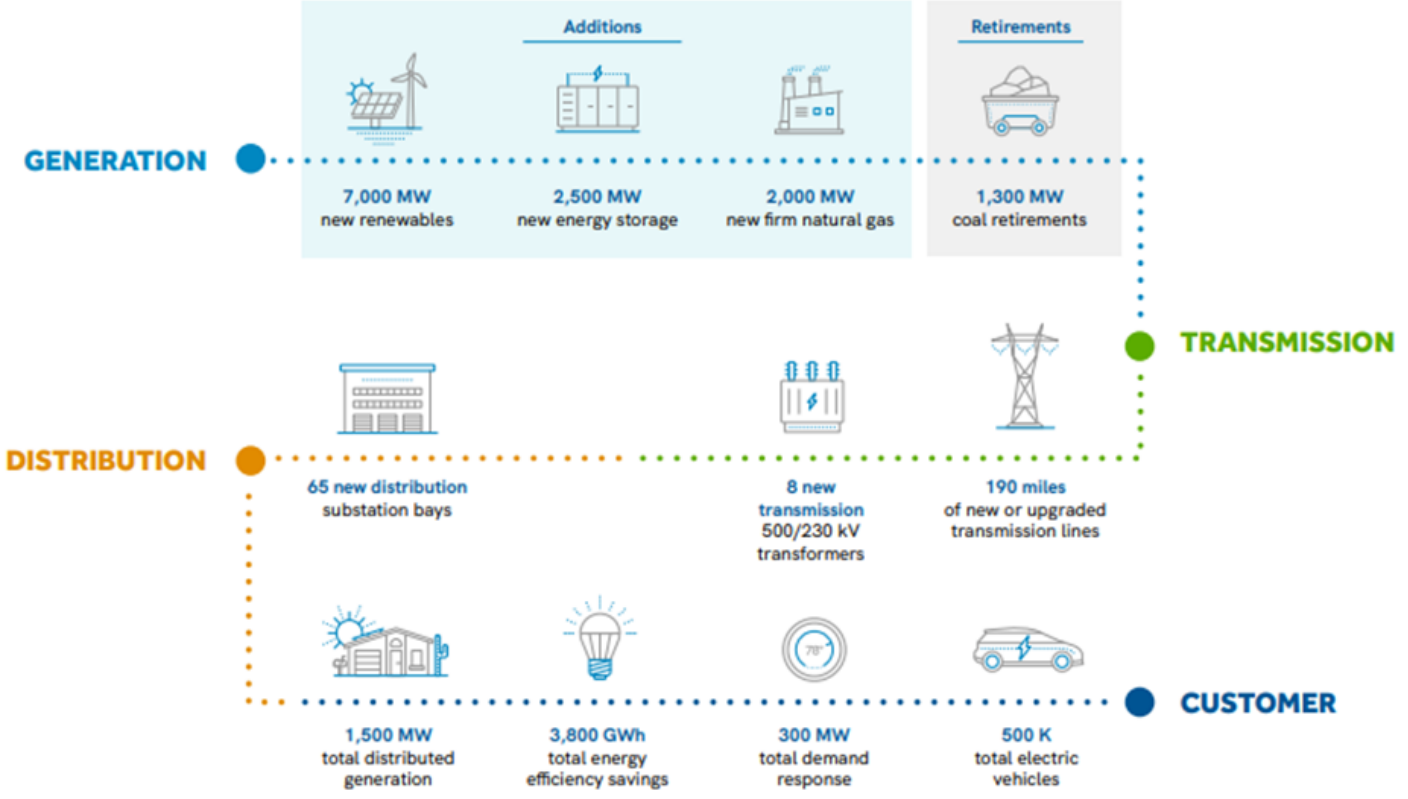
*Click "Q&A" at  
bottom of screen*



[www.srp.net/marigold](http://www.srp.net/marigold)  
1-602-236-2872

# Purpose and Need

# Salt River Project (SRP) – Integrated System Planning

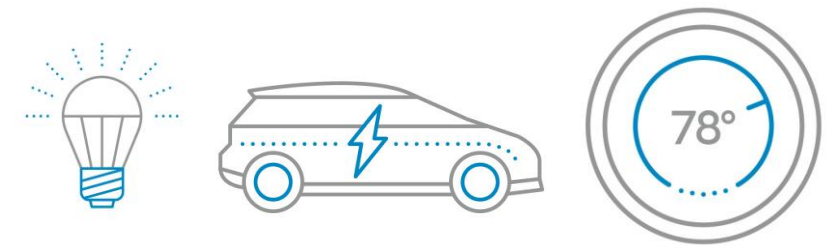
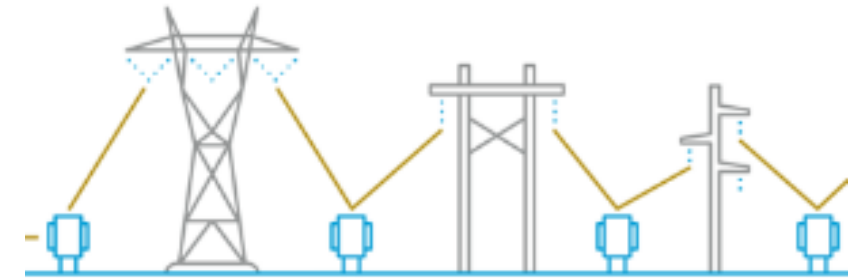
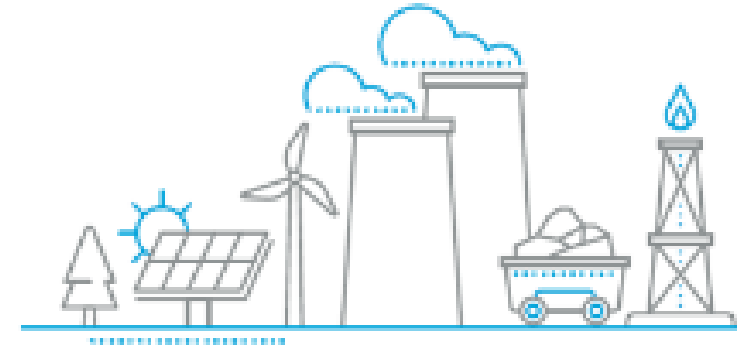


## Solutions to Meet Growing Demand and Customer Needs

- ✓ Adding Generation
  - Renewable Energy
  - Storage
  - Firm Natural Gas
- ✓ Converting Coal Plants
- ✓ Upgrading Transmission Grid
- ✓ Expanding Distribution
- ✓ Growing Distributed Generation
- ✓ Energy Efficiency
- ✓ Demand Response
- ✓ Support Electrification

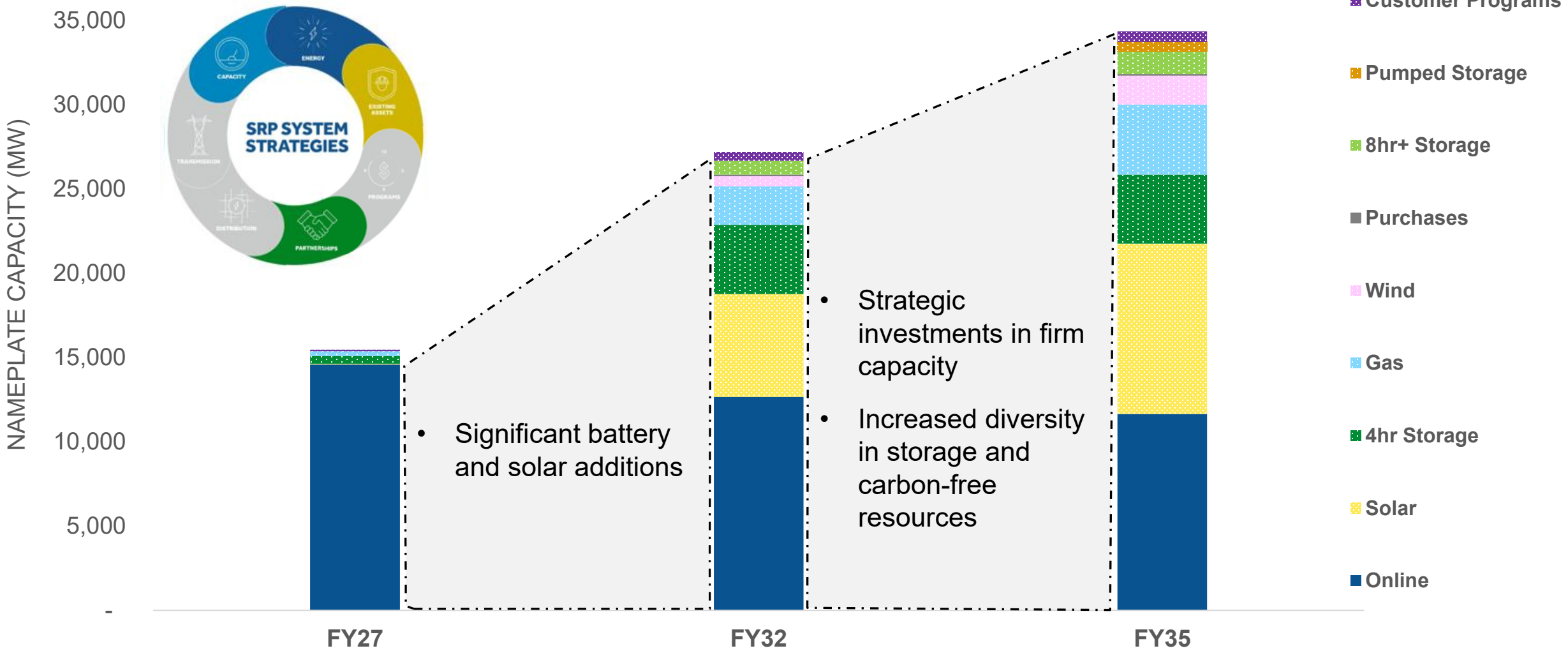
# Key Takeaways from SRP's Integrated System Plan

- SRP will need to more than **double if not triple resource capacity** in the next decade
- Firm capacity **and** renewables are part of **least-cost portfolio** in all scenarios
- **Hundreds of miles** of transmission and **nearly twice** the transformers are needed
- SRP will need to **evolve programs and price plans** to shift consumer behavior

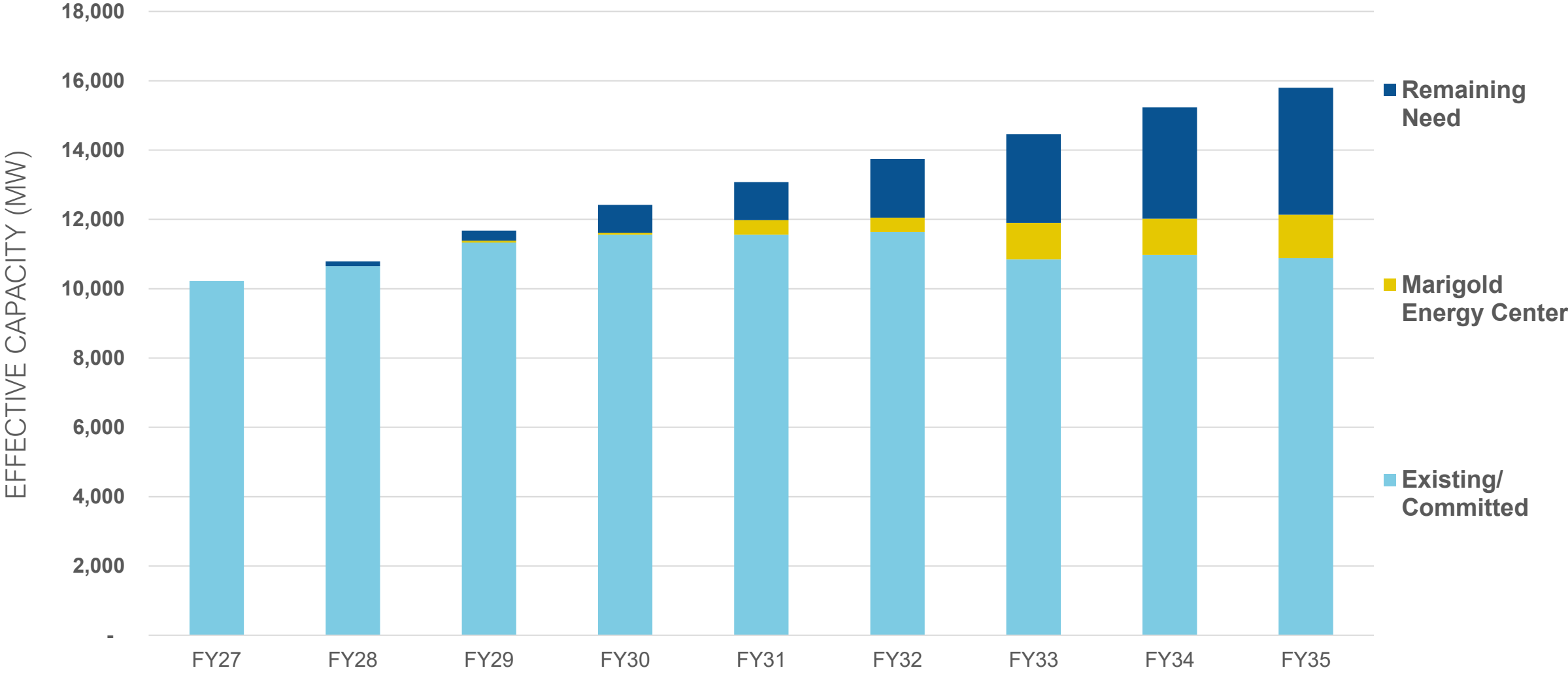


# Fiscal Year 2027 Resource Plan Summary

## RESOURCE ADDITIONS BY GENERATION TYPE

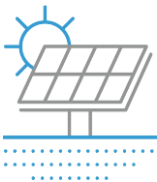
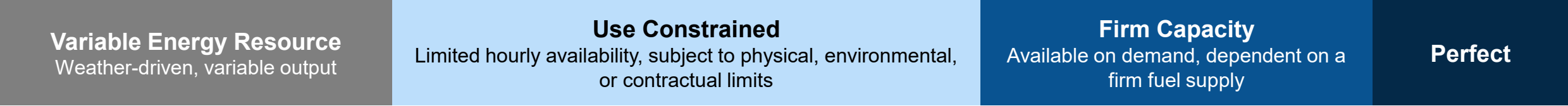


# Marigold Energy Center Helps Meet Summer Capacity Needs

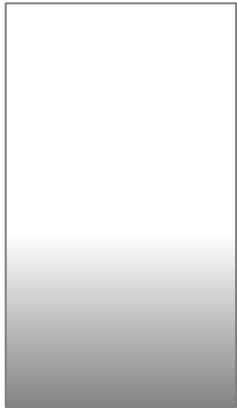


# Resource Availability to Support Reliability

Resource Firmness



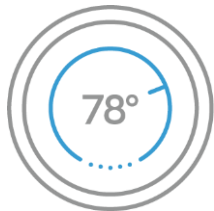
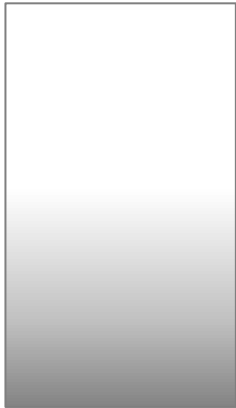
SOLAR



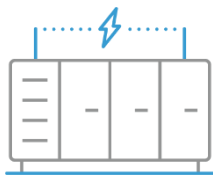
**+600MW**  
Marigold Solar



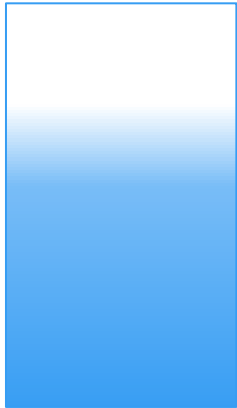
WIND



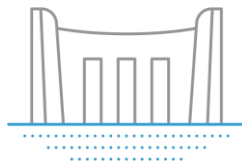
DEMAND RESPONSE



STORAGE



**+400MW**  
Marigold Storage



HYDRO



NATURAL GAS



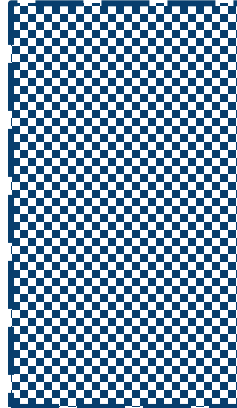
**+675MW**  
Marigold Gas



THERMAL & FIRM FUEL SOURCE



“PERFECT” CAPACITY



Source: E3, CAISO





# Electrical District 3

ED3 is evaluating a potential partnership with SRP to procure a portion of the energy generated by the Marigold Energy Center, enhancing ED3's ability to serve local customers with reliable and competitively priced electricity.

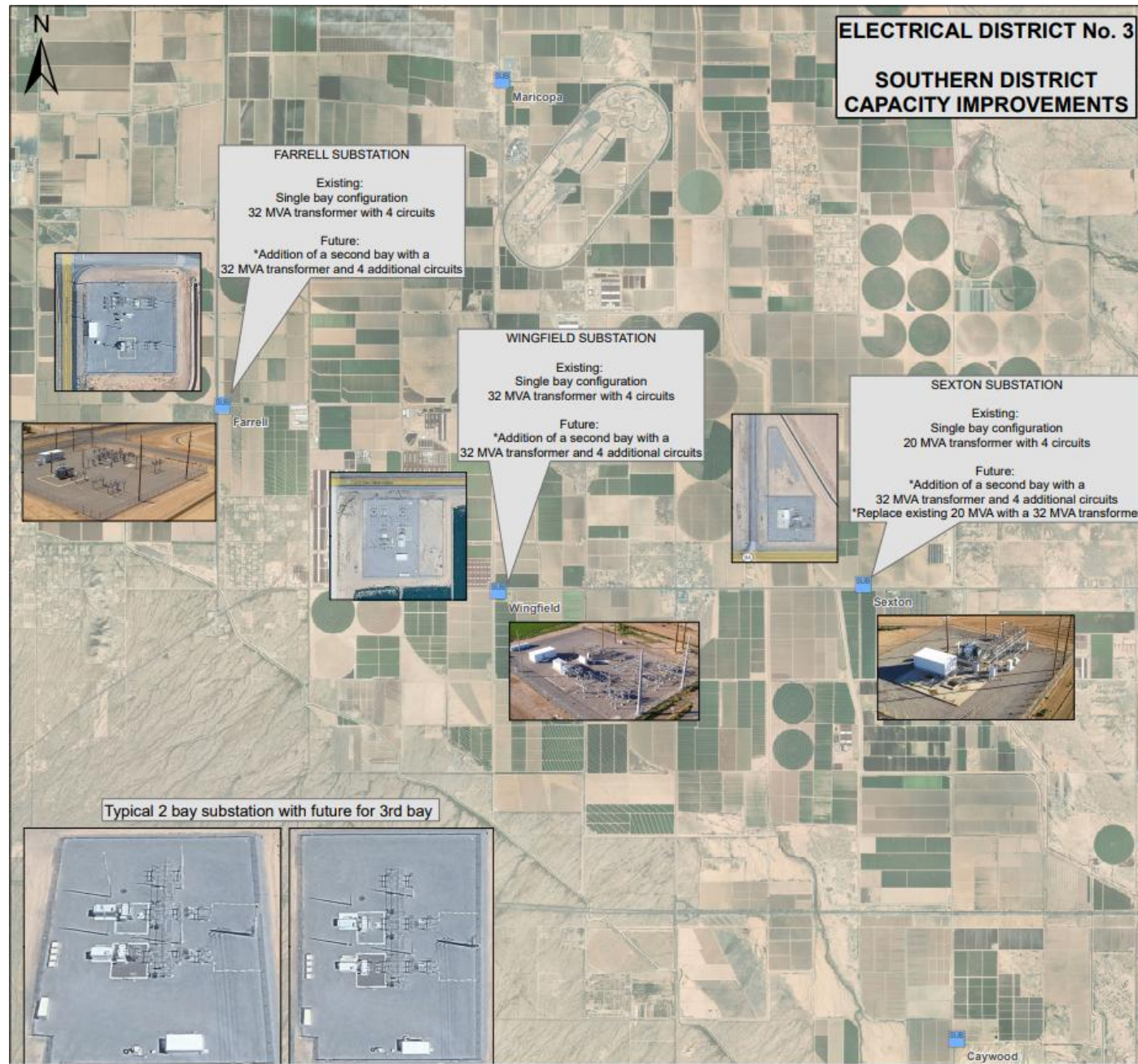


Tentative Operations Date for Substation Upgrades:

Wingfield Substation  
– September 2027

Sexton Substation  
– December 2027

Farrell Substation  
– December 2028

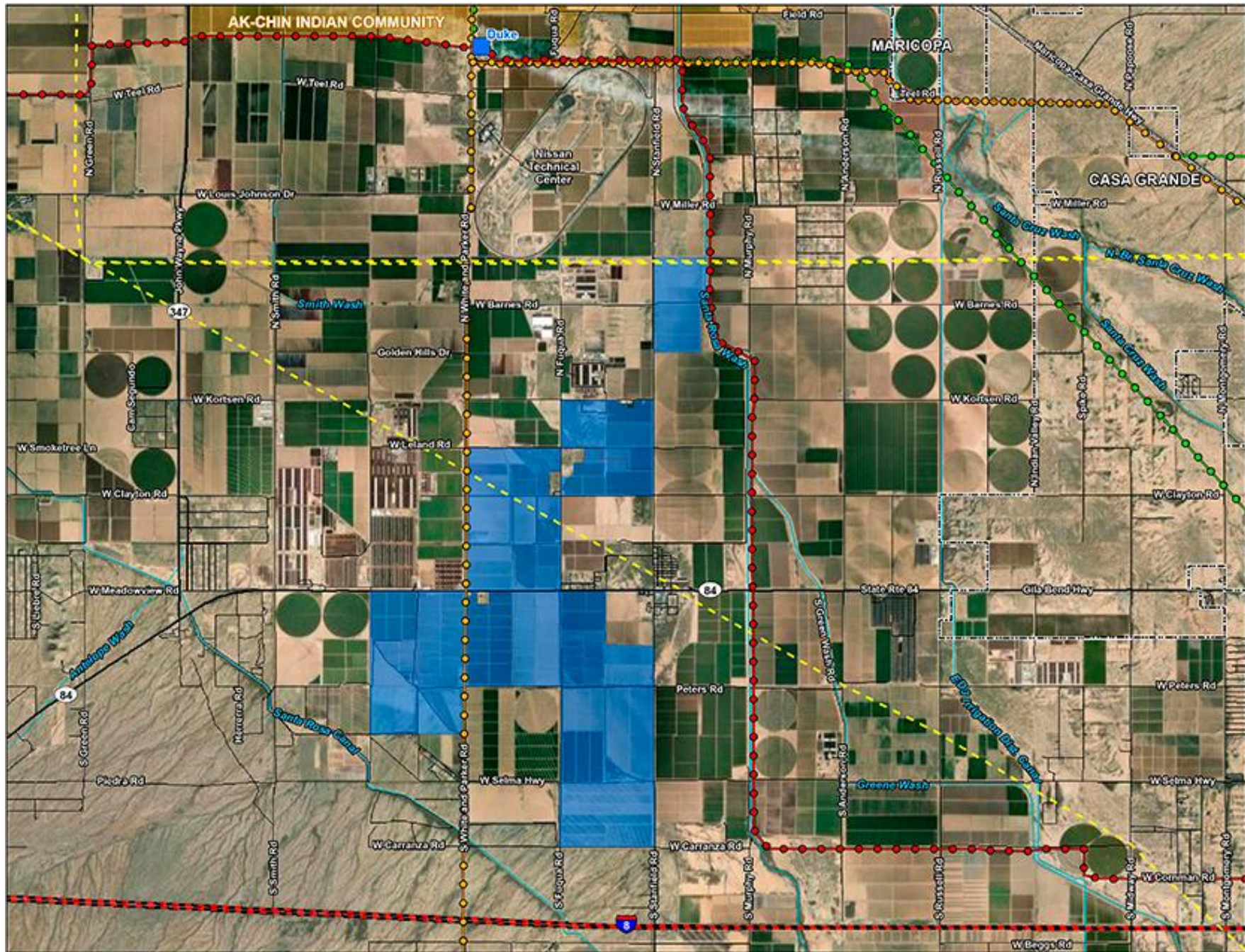


Southern Capacity Substation Improvement Projects are included in the 5-year capital improvement program plan for ED3 with investment totaling approximately \$14 million.

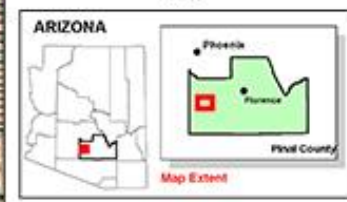
In January 2026, ED3 placed orders for long-lead time project elements for Wingfield Substation and Sexton Substation such as transformers and circuit breakers. Engineering design work for all three projects have been approved.

The projects improve both capacity and reliability for the southern area of ED3.

# Proposed Project



- Legend**
- General Features**
- Existing Substation
  - 500 kV Transmission Line
  - 230 kV Transmission Line
  - 115 kV Transmission Line
  - - - Pipeline
  - Interstate
  - State Highway
  - Road
  - |— Railroad
  - Major Stream / Wash / Canal
  - Municipal Boundary
- SRP Marigold Energy Center**
- SRP-Controlled Property
- Jurisdictional Land Ownership**
- Tribal Land



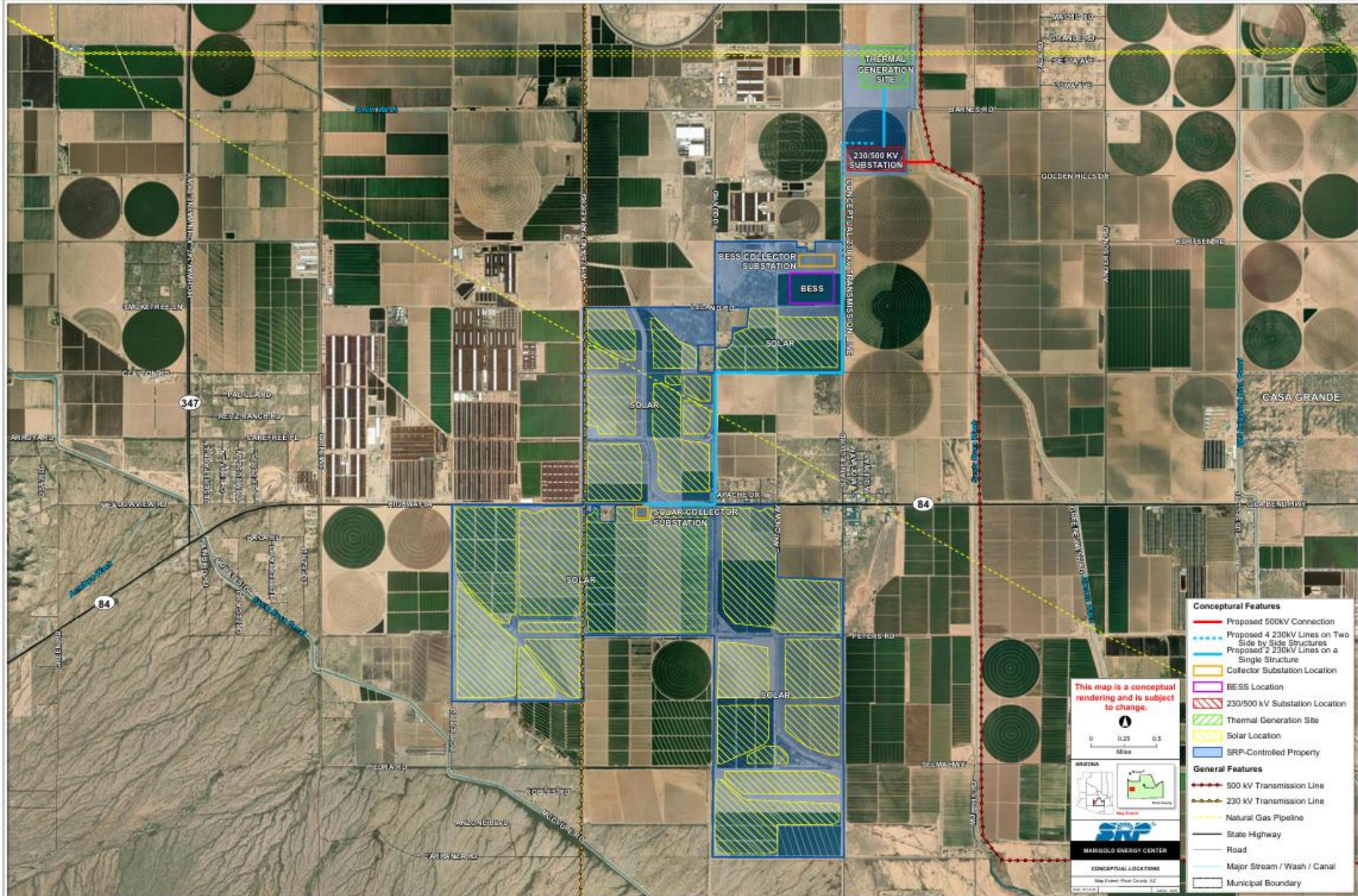


**MARIGOLD ENERGY CENTER**

**FIGURE 1  
PROJECT SITE**

Map Extent: Pinal County, AZ

Date: 11/04/20      Author: BSW



This map is a conceptual rendering and is subject to change.



MARIGOLD ENERGY CENTER  
CONCEPTUAL LOCATIONS  
Map Extent: Pinal County, AZ  
Map Date: 11/18/2023

- Conceptual Features**
- Proposed 500kV Connection
  - Proposed 4 230kV Lines on Two Side by Side Structures
  - Proposed 2 230kV Lines on a Single Structure
  - Collector Substation Location
  - BESS Location
  - 230/500 kV Substation Location
  - Thermal Generation Site
  - Solar Location
  - SRP-Controlled Property
- General Features**
- 500 kV Transmission Line
  - 230 kV Transmission Line
  - Natural Gas Pipeline
  - State Highway
  - Road
  - Major Stream / Wash / Canal
  - Municipal Boundary

# Project Rendering – Birdseye View



# Project Simulation – Key Observation Point (KOP) 1



*Corner of Pala Road and Barnes Road  
looking West*

Current Condition

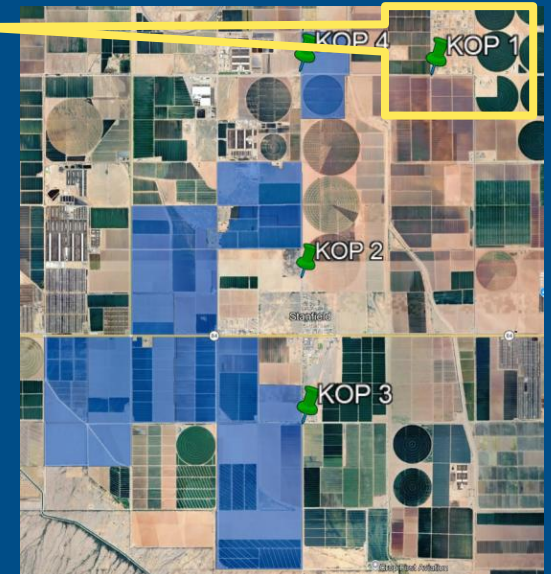


# Project Simulation – Key Observation Point (KOP) 1



*Corner of Pala Road and Barnes Road  
looking West*

Simulated Condition

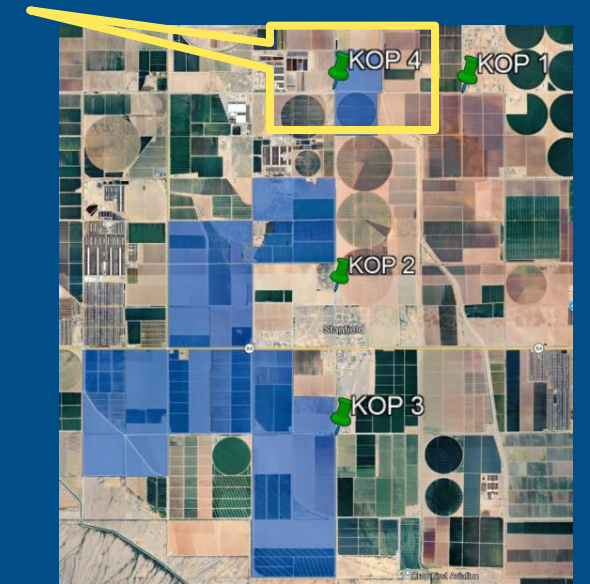


# Project Simulation – Key Observation Point (KOP) 4



*Corner of North Stanfield Road and Barnes Road looking Northeast*

Current Condition

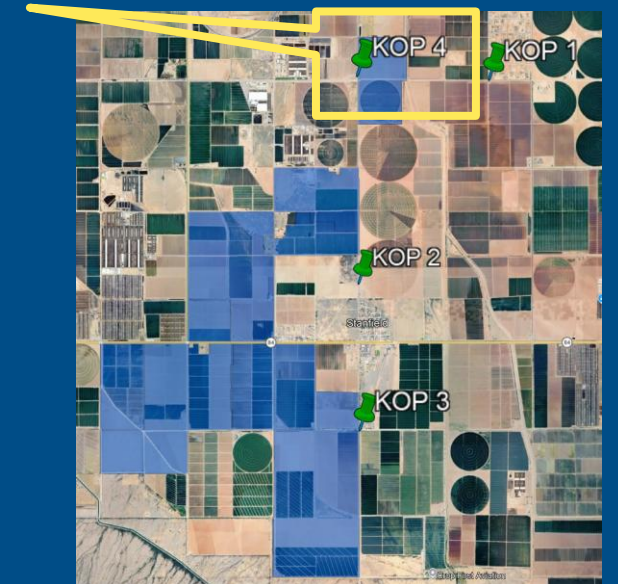


# Project Simulation – Key Observation Point (KOP) 4



*Corner of North Stanfield Road and Barnes Road looking Northeast*

**Simulated Condition**

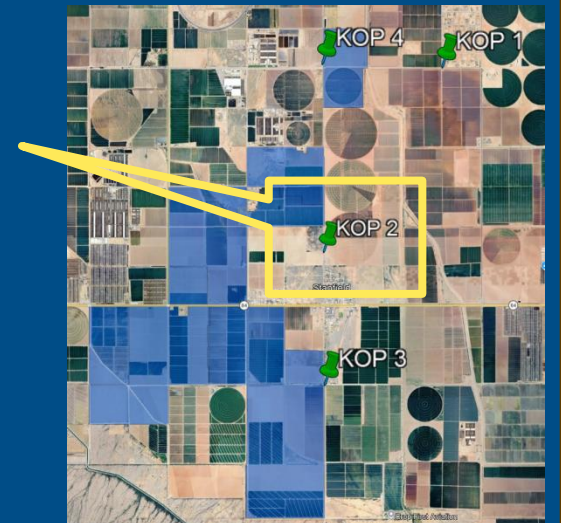


# Project Simulation – Key Observation Point (KOP) 2



*North Stanfield Road looking Northwest*

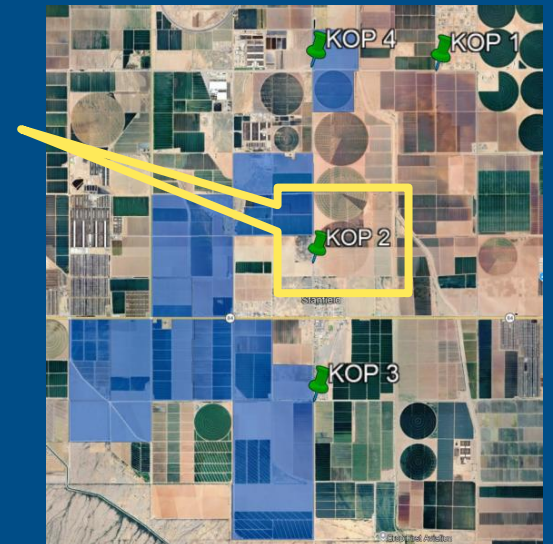
**Current Condition**



# Project Simulation – Key Observation Point (KOP) 2



North Stanfield Road looking Northwest



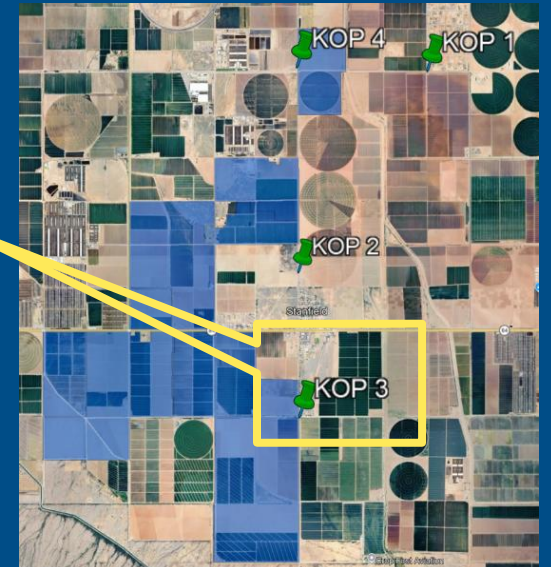
Simulated Condition

# Project Simulation – Key Observation Point (KOP) 3



North Fuqua Road & State Route 84 –  
Looking Southwest

Current Condition

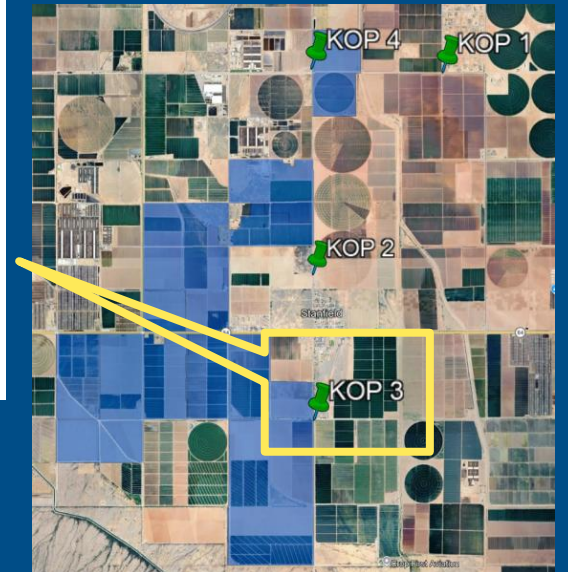


# Project Simulation – Key Observation Point (KOP) 3

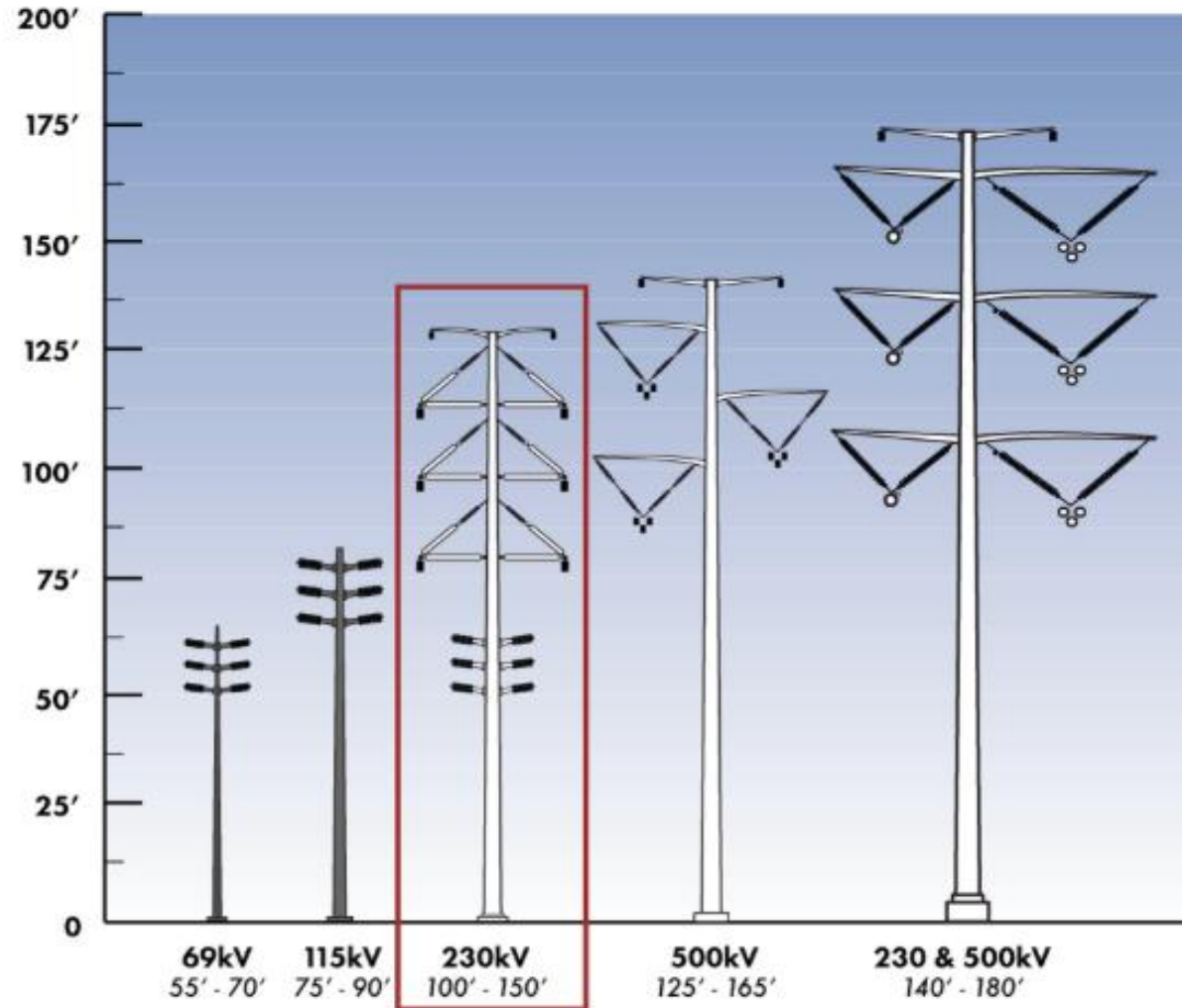


*North Fuqua Road & State Route 84 –  
Looking Southwest*

**Simulated Condition**



# Typical Structure Types



*Represents SRP's typical structures. Actual structure types for this project have not yet been determined and may vary depending on location.*

# Marigold Energy Center- Water Resources

SRP is in the early phases of discussing potential water acquisitions and partnerships for the **Marigold Energy Center**.

Marigold is in the **Pinal Active Management Area (AMA)**, regulated by ADWR.

SRP's 2035 Sustainability Goal is to eliminate or offset groundwater use for power generation within an AMA. Marigold plans to incorporate **renewable water sources** as part of this commitment.

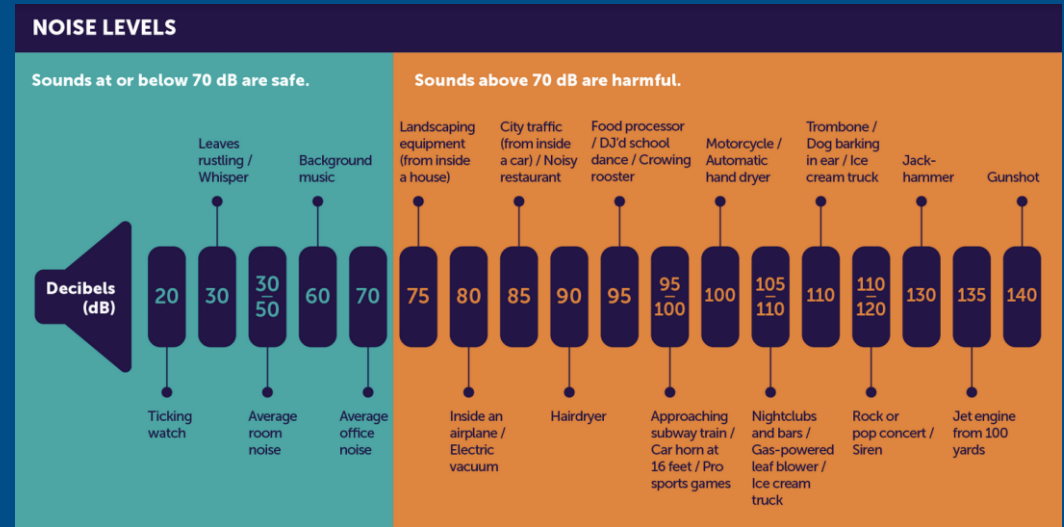
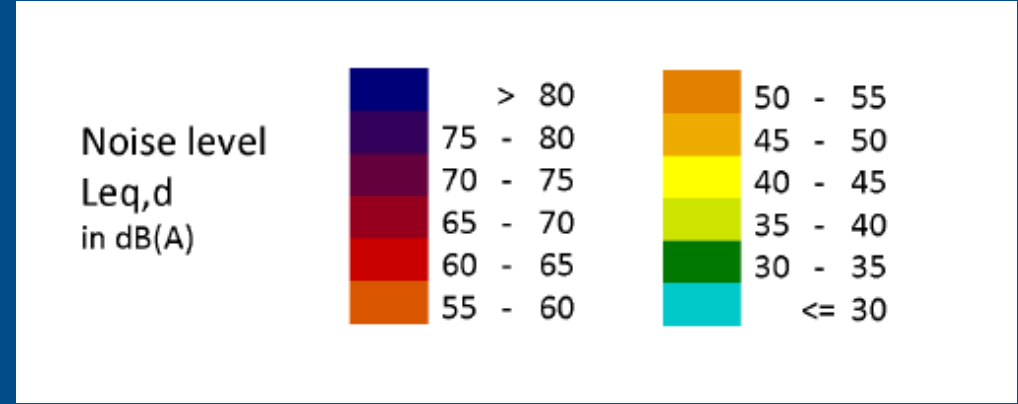
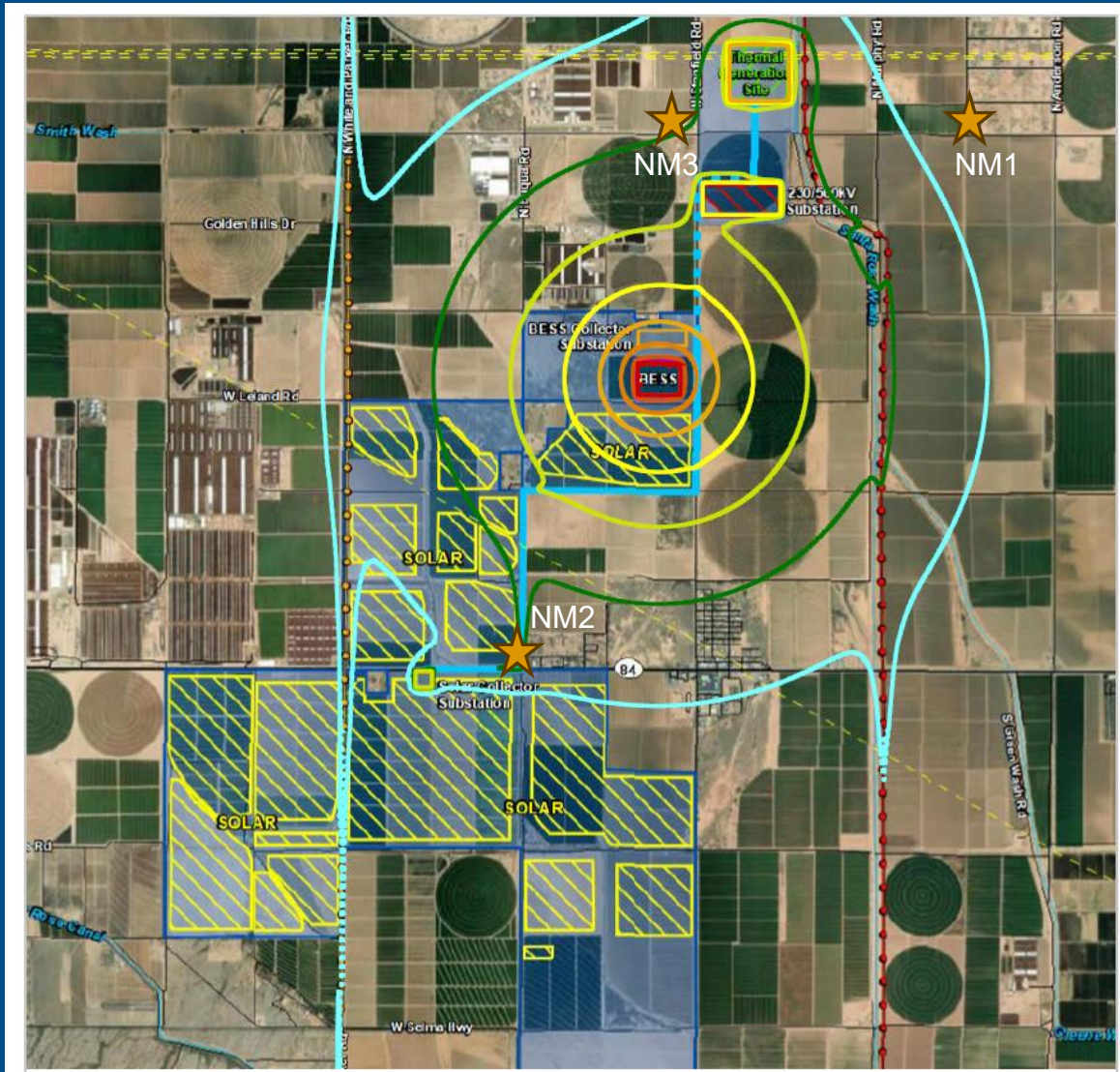
The Marigold site is historically agricultural; transitioning to solar, battery storage, and natural gas generation will significantly **reduce water use** compared to historical uses.

SRP is committed to water stewardship. Developing a **sustainable, responsible water resource plan** will be a top priority throughout the project.



# Noise Study

# Noise Study Results



Source: Hearing Health Foundation

★ Ambient Noise model site

# Noise Study Results

TABLE 3: MODELED EXTERIOR NOISE LEVELS FROM OPERATIONAL SOURCES

Monitoring Site	Time Period	Modeled Noise Levels (A)	Ambient Noise Levels (B)	Modeled plus Ambient (C) (A+B)	Potential Noise Increase Above Ambient (C-B)	Exceeds Pinal County Daytime Limit?	Exceeds Pinal County Nighttime Limit?
		dBA					
NM1	Daytime	30.5	62.7	62.7	0.0	No <sup>1</sup>	–
	Nighttime	30.5	59.8	59.8	0.0	–	No <sup>1</sup>
NM2	Daytime	33.8	59.8	59.8	0.0	No <sup>2</sup>	–
	Nighttime	33.8	54.7	54.7	0.0	–	No <sup>2</sup>
NM3	Daytime	35.1	51.4	51.5	+0.1	No <sup>1</sup>	–
	Nighttime	35.1	51.4	51.5	+0.1	–	No <sup>1</sup>

Average listeners noticeably detect a difference of about **3 dB** in signal to noise ratio (SNR)

Source: Study published in PubMed

Note:

<sup>1</sup> Located within the Rural Zoning District, daytime (7am-9pm) limits is 65 dBA and nighttime (9pm-7am) limits is 60 dBA.

<sup>2</sup> Located within the Residential Zoning District, daytime (7am-8pm) is 60 dBA and nighttime (8pm-7am) limits is 55 dBA.

Source: Refer to **Appendix 2.0** for SoundPLAN Output Sheets.

*At nearest residences there is no discernable difference in noise*

# Siting, Engagement, Environmental and Regulatory Process

# Statutory Requirements: Environmental

**Air Quality**

**Biological Resources**

**Cultural and Historical Resources**

**Geology and Soils**

**Hydrology**

**Land Use**

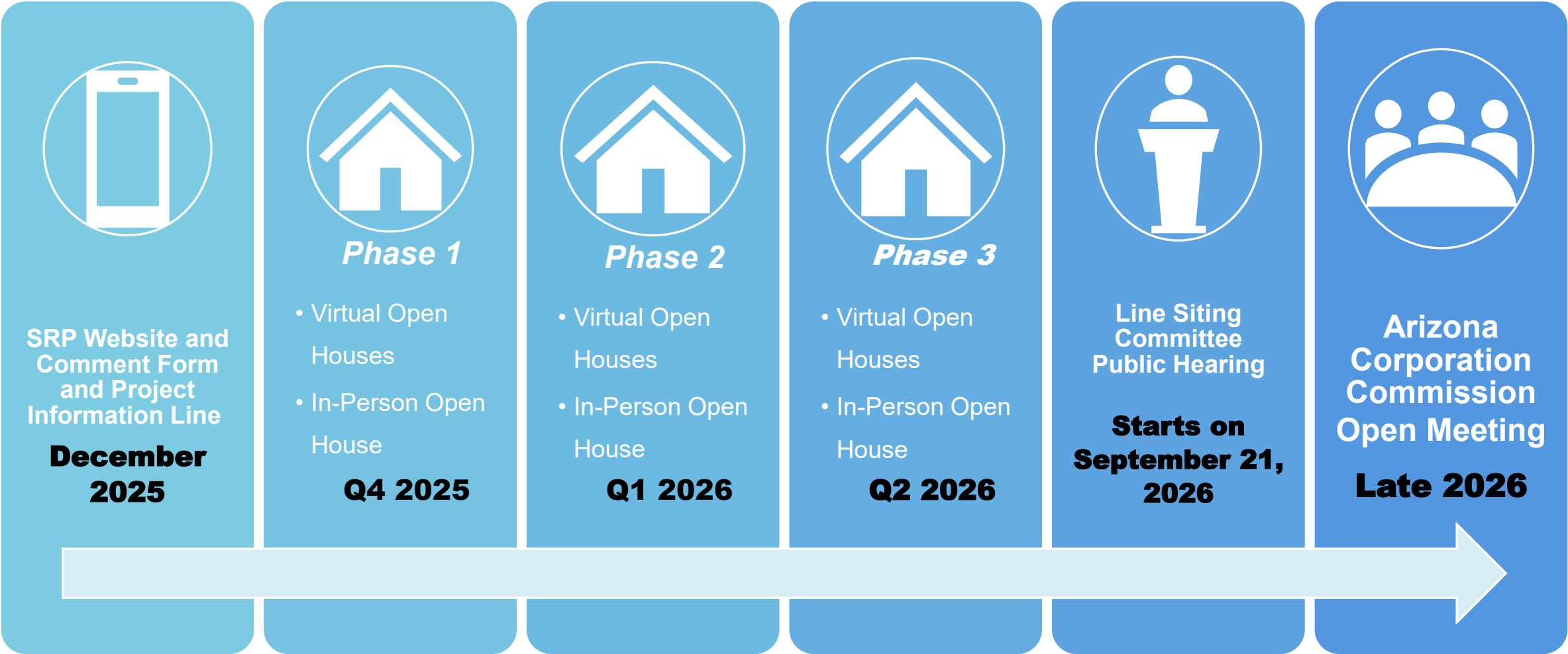
**Noise**

**Recreation**

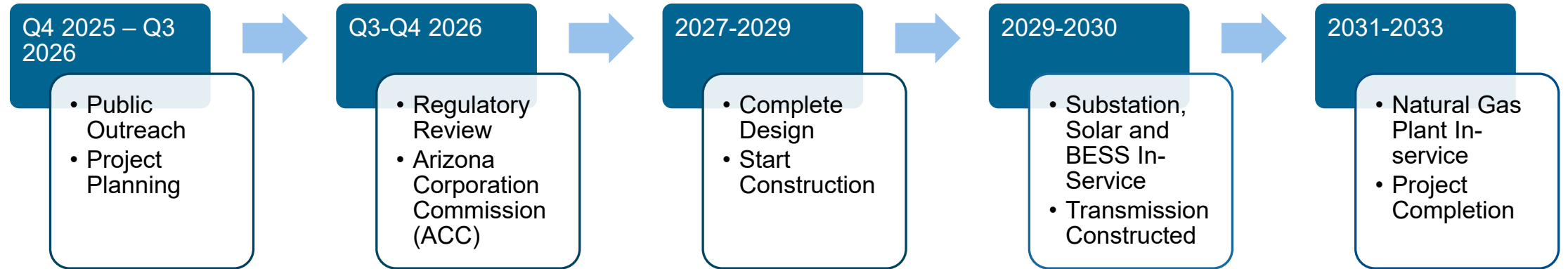
**Visual and Aesthetics**



# Opportunities for Public Input



# Preliminary Schedule



# Arizona Corporation Commission (ACC) Siting Process



File application  
for a Certificate of  
Environmental  
Compatibility (CEC)

**Anticipated Mid  
August 2026**



Line Siting Committee  
Public Hearing  
(30-60 days after filing CEC  
application)

**Starts on September  
21, 2026**



ACC  
Open Meeting  
(30-60 days after Siting  
Committee Decision)

**Q4 2026**



# Fire and Risk Alliance

SRP is working with the Fire and Risk Alliance to plan for Emergency Management and provide information to the public regarding fire safety

# Community Support

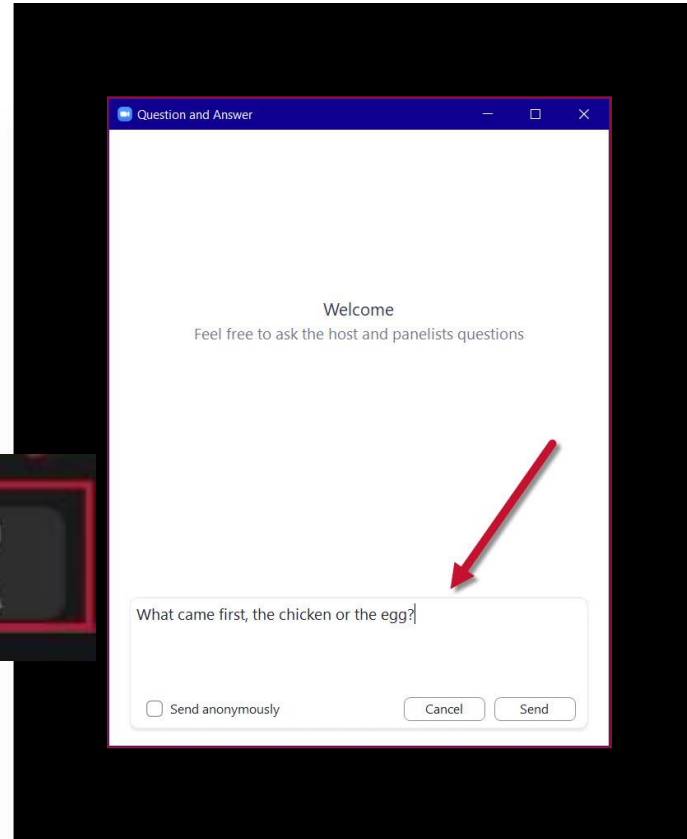
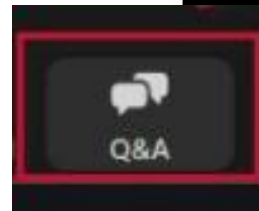
# Stanfield Community Support

- Active member of the monthly *Stanfield Breakfast with Business Leaders* meeting
- Recognized *Stanfield Elementary School* teachers through employee appreciation gifts
- Supported the *Desert Senita Health Fairs*
- Engaged in the *Stanfield Elementary School's Halloween Pumpkin Contest* and sponsored prizes for the students
- Hosted a booth at the *Stanfield Elementary School's Family Literacy Night* educating on energy efficiency
- Hosting an *SRP Powering Our Future Workshop* in April at Stanfield Elementary School for all teachers. Each participant receives professional development hours and a grant for their classroom

# We want to hear from you.

- Use the Q&A Feature to type in questions
- Ask questions throughout the presentation
- We will respond to as many questions as we can

*Click "Q&A" at  
bottom of screen*



[www.srp.net/marigold](http://www.srp.net/marigold)  
1-602-236-2872

**thank you!**