

# Marigold Energy Center

Open House

**Welcome**

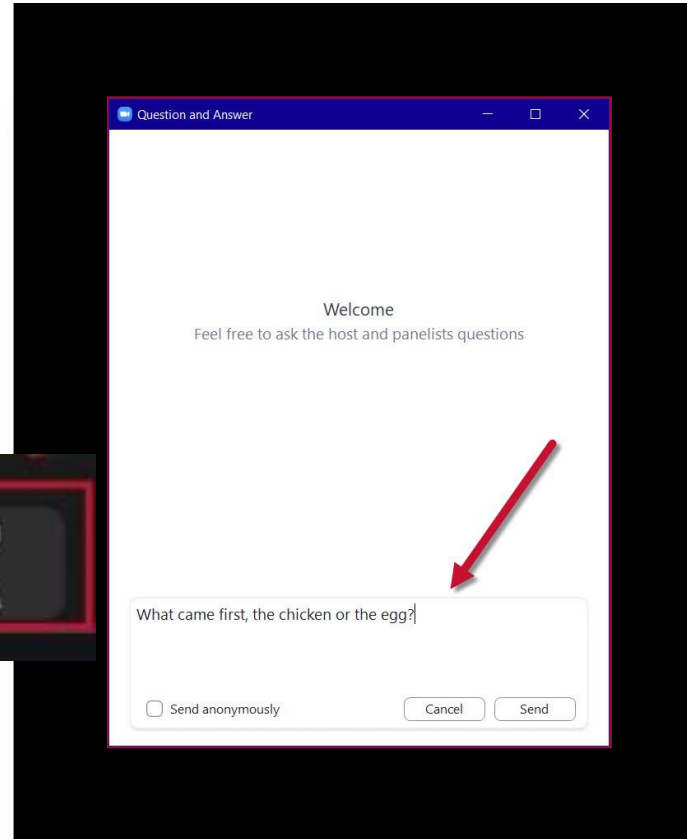
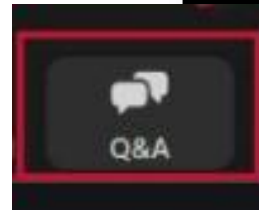
# Agenda

- Introductions
- Project Overview Presentation
- Questions & Answers via Q&A Function

# We want to hear from you.

- Use the Q&A Feature to type in questions
- Ask questions throughout the presentation
- We will respond to as many questions as we can

*Click "Q&A" at  
bottom of screen*



## Feedback Survey Form



[www.srp.net/marigold](http://www.srp.net/marigold)  
1-602-236-2872

# Purpose and Need

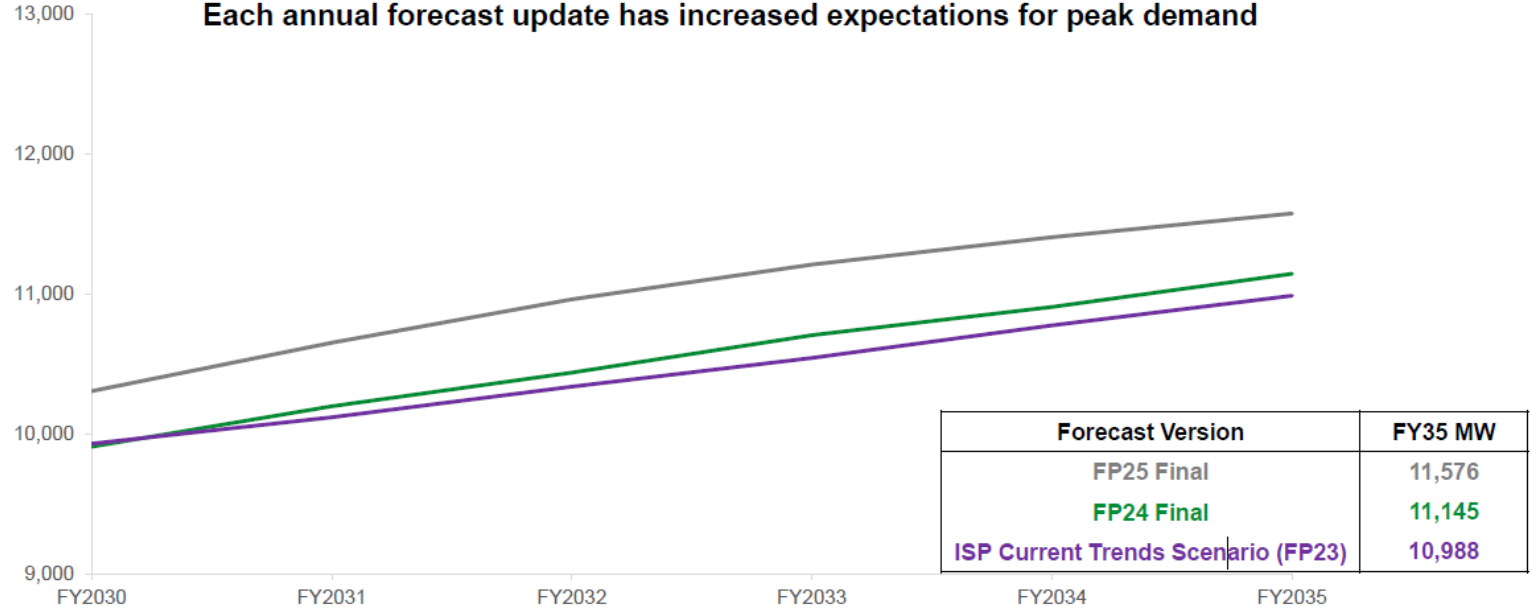
# Pinal County Energy Growth



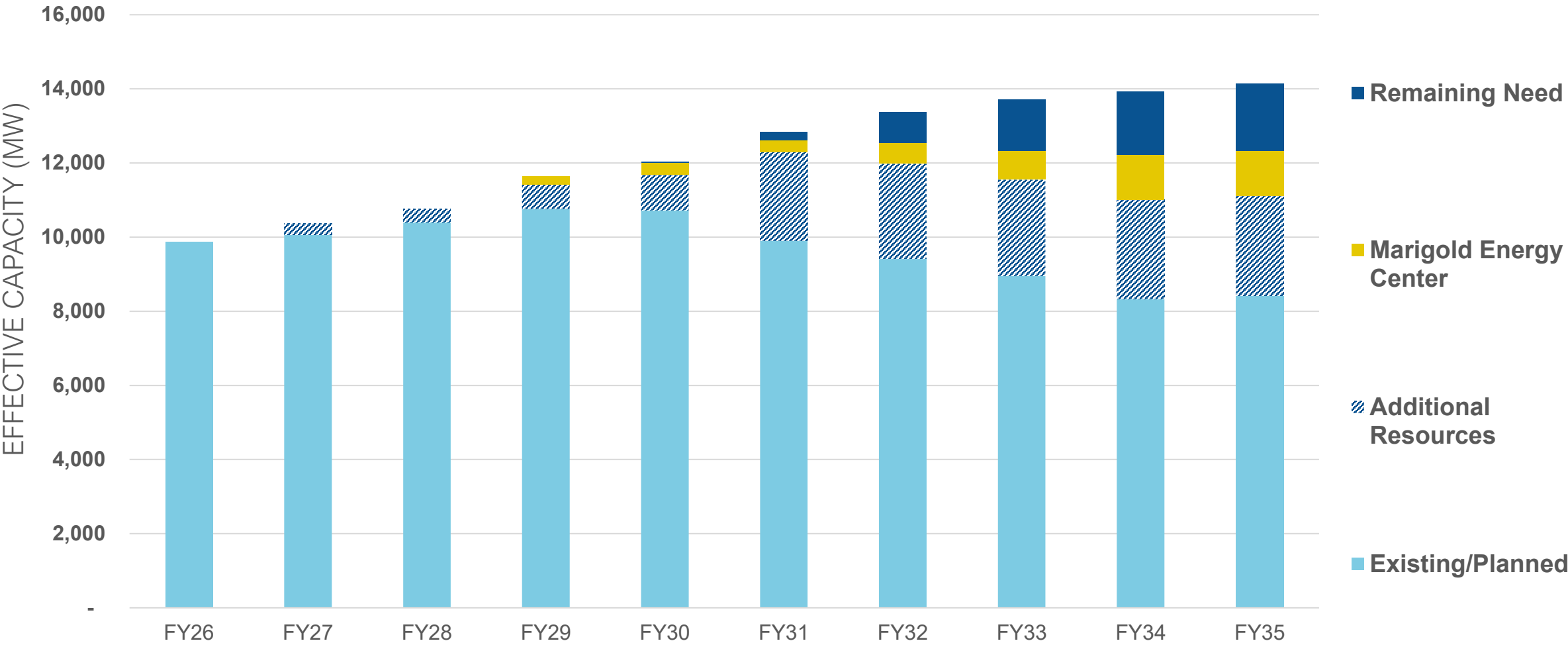
## Forecasted Customer Demand Grows

Peak Demand (MW)

Each annual forecast update has increased expectations for peak demand



# Marigold Energy Center Helps Meet Summer Capacity Needs



# Balanced Approach

## Generation

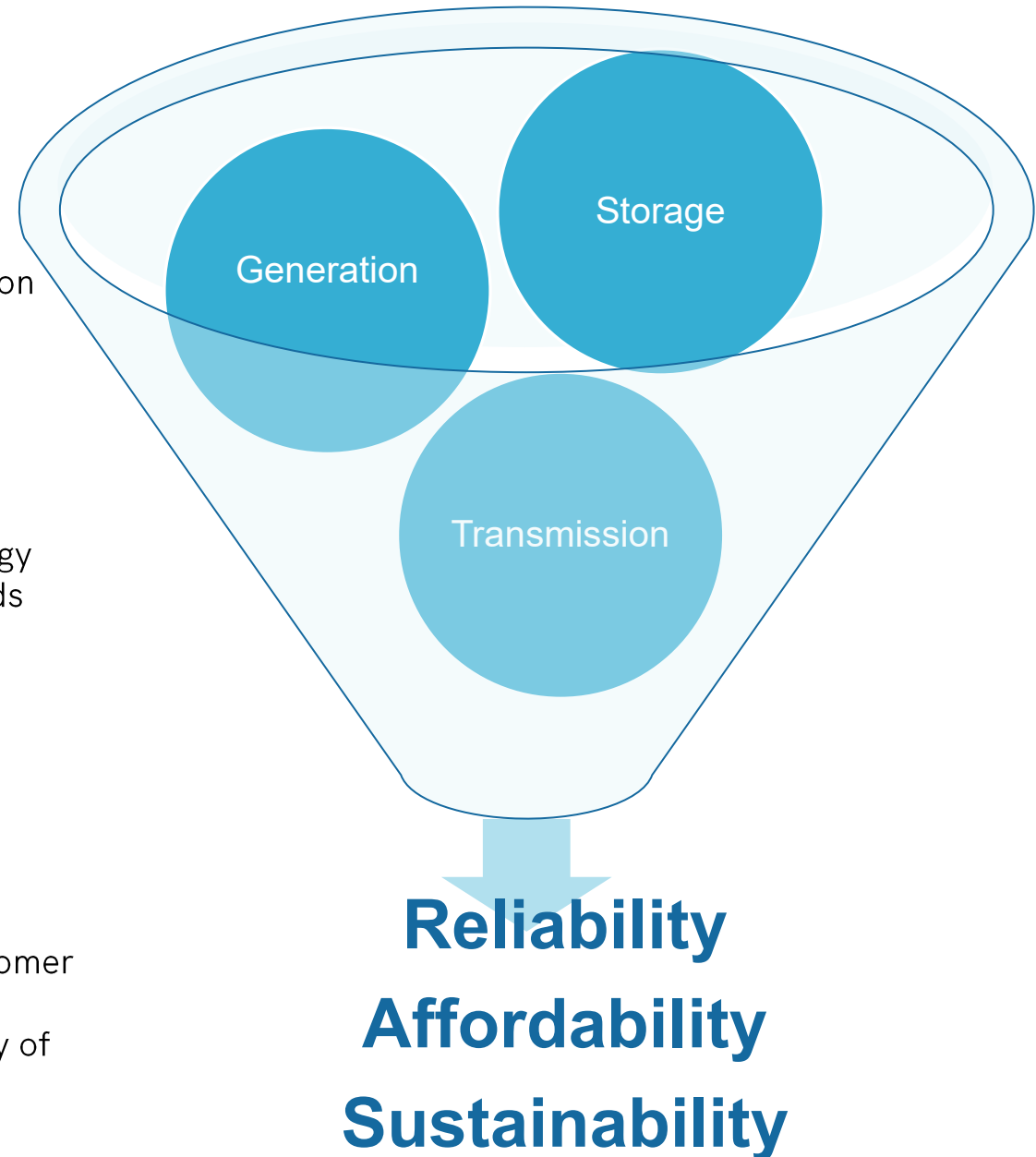
- A combination of Solar PV and Natural Gas Generation
- Values both reliability and sustainability
- Manages costs to customers

## Storage

- Helps offset the intermittent nature of Solar PV Energy
- Adds to our ability to rapidly respond to system needs
- New, state of the art technology safely stores energy

## Transmission

- Necessary to put power onto the grid to deliver to customers
- Connects us to other sources of energy to meet customer needs
- Links our network to improve reliability and flexibility of the grid



# Proposed Project

# What Sources of Power Are We Planning?

## Solar

- Sustainable Energy Source
- Cost Effective

**Up to 600 MW**

## Natural Gas

- More Megawatts in a Smaller Footprint
- Flexible and Responsive to Changes in Energy Demand

**Up to 675 MW**

## Battery Energy Storage

- Storing Solar Energy Balances Intermittent Source
- New Technology Is Safe and Effective

**Up to 400 MW**



ED3 is evaluating a potential partnership with SRP to procure a portion of the energy generated by the Marigold Energy Center, enhancing our ability to serve local customers with reliable and competitively priced electricity.



# Substation Example



## What is a Substation?

- Powerlines connect into and out of substations
- Contain transformers which can raise or lower the voltage to deliver power
- A central hub where lines can connect and where generators can put their electricity onto the grid.

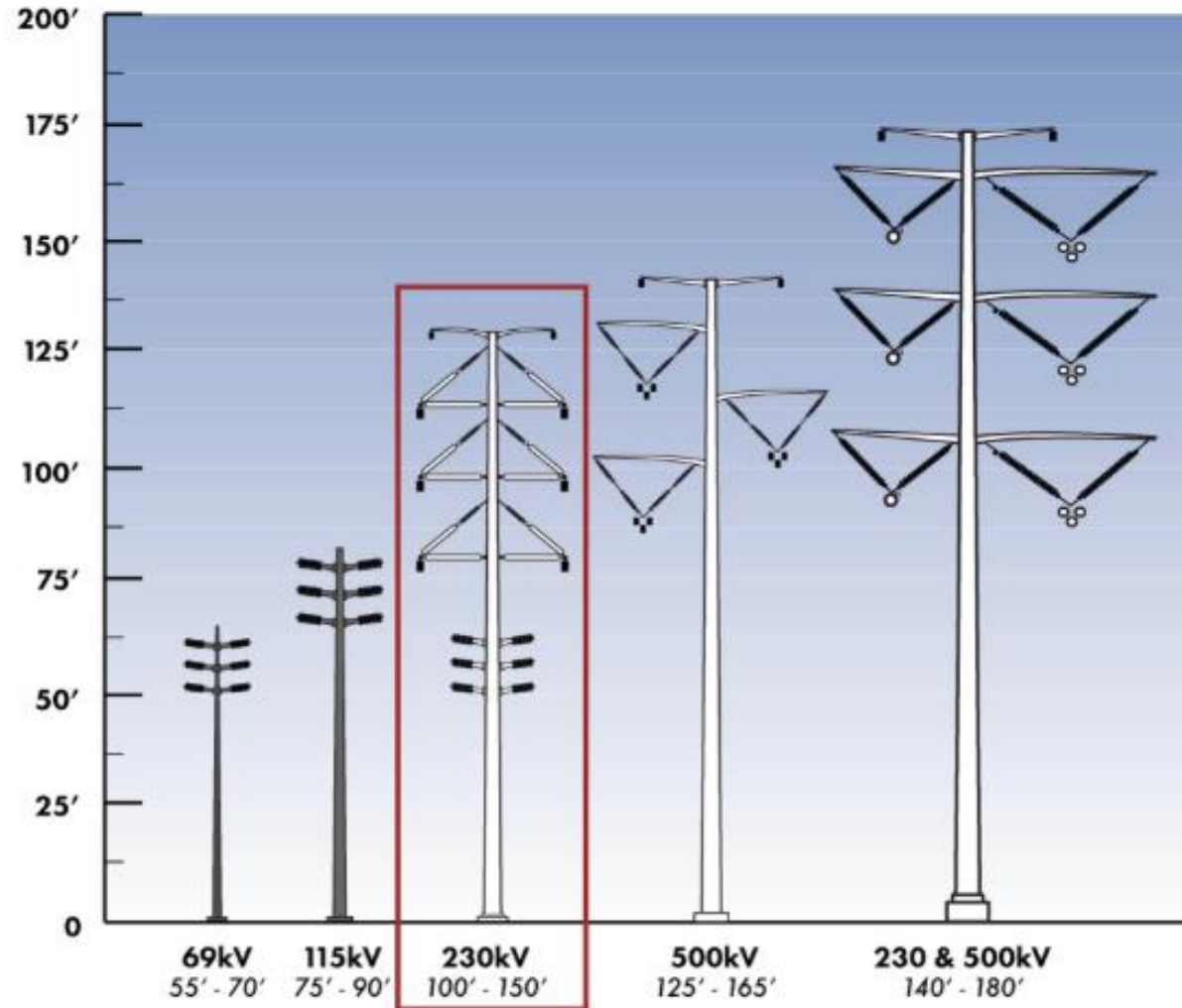
# Transmission Line Example



## High Voltage Transmission Lines

- 230 kV lines interconnect all generation components to the transmission grid
- Typical heights 120-160 feet
- Typical Right-of-way 175-200 feet
- Structure design not determined yet

# Typical Structure Types



*Represents SRP's typical structures. Actual structure types for this project have not yet been determined and may vary depending on location.*

# Solar PV Example



## Solar PV Panel Technology

- Panels can pivot to track with the sun to maximize their exposure
- Turn the sun's energy into electricity
- Panels are connected via underground or above ground cables to a collector station that aggregates power to be delivered via a transmission line

# Natural Gas Generator Example



There are different types of natural gas generators, for this project the exact design is not yet selected

## Natural Gas Generation

- Also called thermal generation, burns fuel (natural gas) to generate electricity
- Uses water when needed to cool the equipment, condition air, and reduce some emissions , amount is dependent on design and air temperature

# Battery Energy Storage System (BESS) Example



## BESS Technology

- State of the art BESS are in individual containers to enclose and contain each system
- Designed with monitoring systems to automatically report operating conditions
- Key safety measures reduce risk of fire by managing and containing any potential issues

# Siting, Environmental and Regulatory Process

# Statutory Requirements: Environmental

Air Quality

Biological Resources

Cultural and Historical Resources

Geology and Soils

Hydrology

Land Use

Noise

Recreation

Visual and Aesthetics



# Arizona Corporation Commission (ACC) Siting Process



File application  
for a Certificate of  
Environmental  
Compatibility (CEC)

**Anticipated Mid  
August 2026**



Line Siting Committee  
Public Hearing  
(30-60 days after filing CEC  
application)

**Starts on September  
21, 2026**

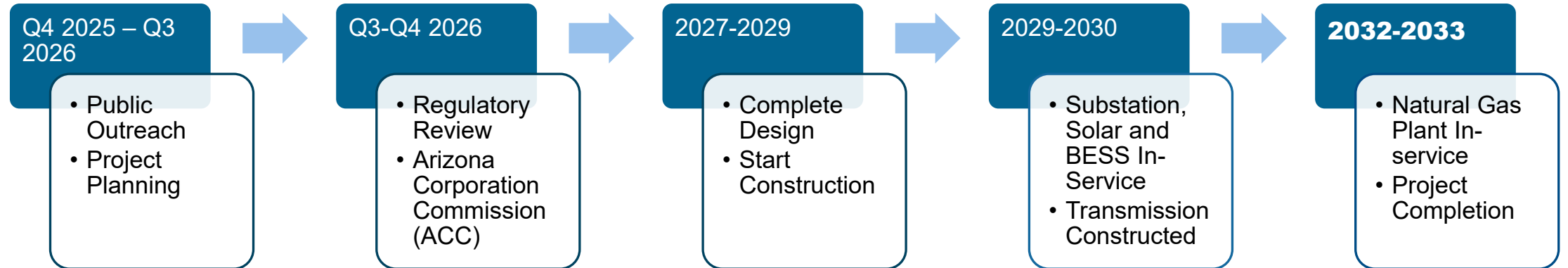


ACC  
Open Meeting  
(30-60 days after Siting  
Committee Decision)

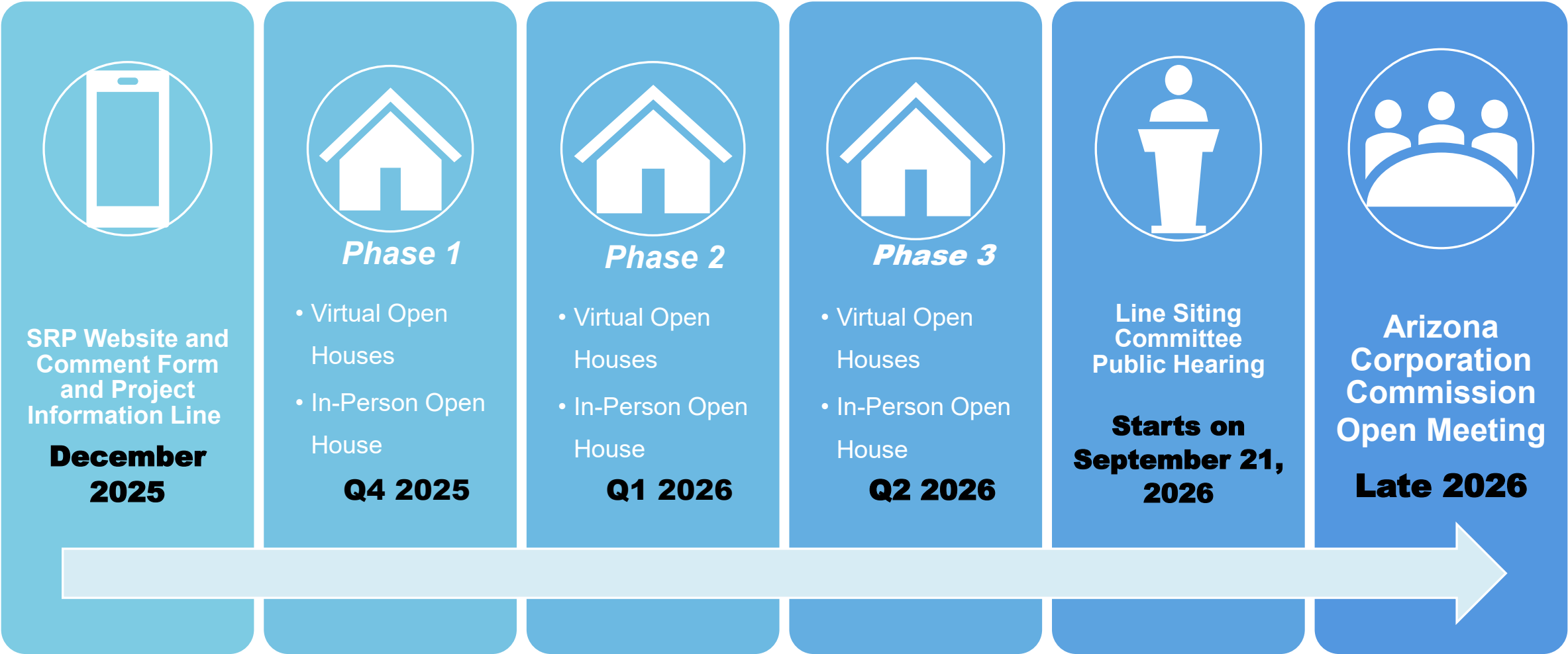
**Q4 2026**



# Preliminary Schedule



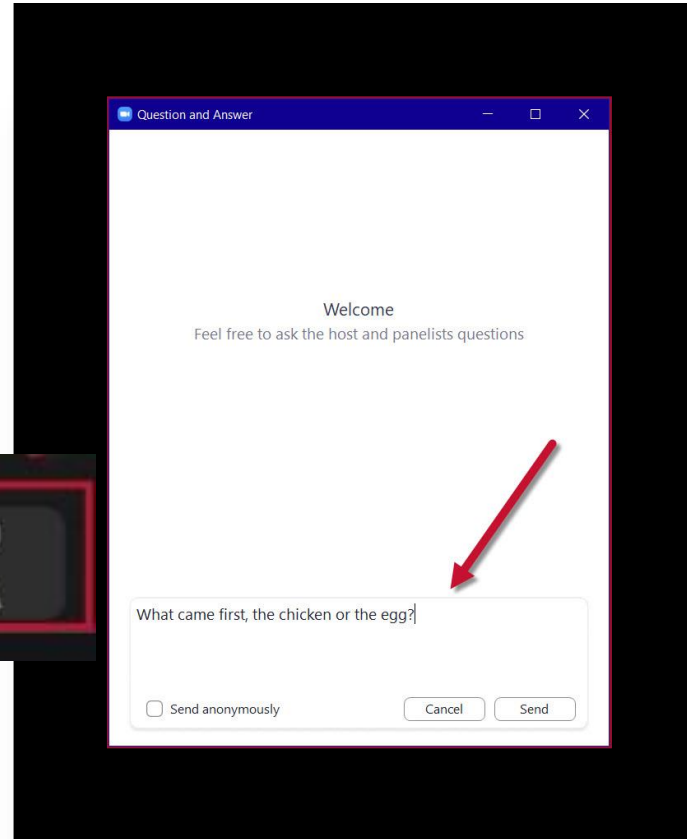
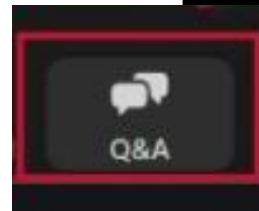
# Opportunities for Public Input



# We want to hear from you.

- Use the Q&A Feature to type in questions
- Ask questions throughout the presentation
- We will respond to as many questions as we can

*Click "Q&A" at  
bottom of screen*



## Feedback Survey Form



[www.srp.net/marigold](http://www.srp.net/marigold)  
1-602-236-2872

**thank you!**