

**EXHIBIT J  
SPECIAL FACTORS**

---

In accordance with Arizona Administrative Code R14-3-219, the Applicant provides the following information:

*Describe any special factors not previously covered herein, which Applicant believes to be relevant to an informed decision on its application.*

**Summary of Routing and Public Process**

As described earlier in this Application, Salt River Project Agricultural Improvement and Power District (SRP) initiated the proposed Project Huckleberry 230 kV Transmission Line Project (Project Huckleberry or Project) in response to Meta’s request for power to support its Mesa Data Center (Data Center). SRP conducted a robust public process which included multiple phases and venues, reaching out multiple times to the property owners and customers in the notification area which was approximately 1.5-2.5 miles and included over 13,000 unique addresses each time.

Due to the restrictions of the COVID-19 pandemic, SRP had to adjust its normal process and included live online open house meetings. SRP also conducted an in-person open house prior to filing, which is described below.

**March 2022 Live Online Open House**

- March 22, 2022, at 5:30 p.m.
- March 23, 2022, at 5:30 p.m.

A total of 14 members of the public attended the first open house on March 22, 2022, and a total of 17 live chat questions/comments were submitted. On March 23, 2022, a total of five members of the public attended the second online open house and a total of four live chat questions/comments were submitted. In addition, four questions/comments were received during the registration period prior to the live online open houses.

These meetings consisted of detailed presentations and answers to questions that were sent in prior to the open house. SRP also had a live chat for attendees to use and responded to as many questions as time permitted.

These open houses included virtual video vignettes that were posted to the Project website and available to review 24 hours a day. The video vignettes included information on the following topics:

- Project Need and Benefits
- Routing and Siting Process
- Regulatory Process and Environmental Analysis
- Land and Easement

### **May 2022 In-Person Open House**

- May 3, 2022, 4:30-6:30 p.m. at the Eastmark Visitor and Community Center

As COVID-19 levels decreased, SRP re-evaluated and opted to hold an in-person open house meeting to share information about the Project. An open house format was used, and the Project information and Project team members were accessible for two hours with 11 members of the public attending. The open house format provided an opportunity for attendees to have one-to-one conversations with the Project team members. The team addressed questions and listened to attendee comments.

The community members who attended were very engaged and came prepared with questions, comments and concerns regarding many aspects of the Project. Attendees were encouraged to fill out a comment card expressing their issues, concerns or general statements. There were no hardcopy comment cards received at the Open House. However, we provided comment forms that could be mailed into SRP at a later date.

The live online open house and in-person open house meeting materials (postcard mailers, social media advertisements, press release, and comment forms) from this process are included in **Exhibit J-1**.

Each one of these phases included a robust process to provide information and details about the specific phase or event itself. Cumulative numbers are included below.

- Briefings with public officials representing the region and jurisdictional agencies: 27 (see **Table J-1**);
- Outreach to stakeholders:
  - Homeowners' Owners Associations (HOAs): 17
  - Schools: 7
  - Day Cares: 3
  - Churches: 8
  - Hospitals: 1
  - Chambers: 1
- Mailings: Postcards mailed through the U.S. Postal Service announcing the open houses;
  - 13,263 mailed for each phase
  - Total 26,526 mailed
- Emails to customers;
  - 8,005 sent for phase 1 (7,995 delivered, 10 bounced)
  - 10,103 sent for phase 2 (10,089 delivered, 14 bounced)
  - Total 18,108 sent
- Social Media Advertisements with 195,909 impressions;
- Website with a total of 2,372 unique visitors; and

A summary of letters and comments received is included in **Exhibit J-2**.

In addition to the public process included above, SRP provided a variety of opportunities for members of the public to participate. These opportunities included:

- Project website and comment form: SRP maintains a Project website, [www.srp.net/huckleberry](http://www.srp.net/huckleberry). Members of the SRP Project team reviewed and replied to every comment; and
- Toll-free telephone Project information line, (855) 584-1484.

Table J-1 - Briefings with Jurisdictions	
Contact Date	Affiliation
2/23/2022	Mesa Mayor, John Giles
2/23/2022	Mesa Chief of Staff, Melissa Randazzo
2/23/2022	Mesa City Manager, Chris Brady
2/23/2022	Mesa Deputy City, Manager Scott Butler
2/23/2022	Mesa Councilmember, Kevin Thompson
2/23/2022	Council, District 6, Alicia White
2/23/2022	Apache Junction Manager, Bryant Powell
2/23/2022	Queen Creek Manager, John Kross
2/23/2022	Apache Junction Manager, Bryant Powell
3/2/2022 through 5/6/2022	Arizona Corporation Commission
4/13/2022	Representative, Jacqueline Parker
4/13/2022	Representative, John Filmore
4/13/2022	State Senator, Kelly Townsend

**EXHIBIT J-1**  
**PUBLIC PROCESS MATERIALS**

---



# PROJECT HUCKLEBERRY

SRP supports long-term economic development in the communities it serves by providing reliable power to its customers.

[HOME](#)
[PROJECT NEED AND BENEFIT](#)
[PUBLIC PROCESS](#)
[NEWS](#)
[CONTACT SRP](#)

## ABOUT THE PROJECT

For information on the upcoming Project Huckleberry Open House, please [click here](#).

SRP has received a request to provide energy to a new data center for Meta located in Mesa, Arizona. This project will require SRP to build an approximately half-mile 230 kV transmission line and substation to serve the data center located at the southeast corner of Elliot and Ellsworth roads. The data center continues the Phoenix area's growth in the technology sector and is expected to create approximately 100 high-wage jobs upon its completion and around 1,500 jobs during its construction. SRP supports long-term economic development in the communities it serves by providing reliable power to its customers.

We are notifying customers, property owners and stakeholders about the proposed project.

SRP is preparing an application seeking a Certificate of Environmental Compatibility (CEC) to be filed with the Arizona Corporation Commission (ACC). The CEC process includes public hearings with the Arizona Power Plant and Transmission Line Siting Committee before seeking final approval from the ACC. The hearing before the Line Siting Committee will occur in late June 2022. This website will be updated once the dates and location are confirmed.

[See project map and details](#)

## CONTACT US

If you have questions about the project, please [contact us](#) or call **(855) 584-1484**.

### SELF SERVICE

[Get text alerts](#)  
[Request a street light repair](#)  
[Request payment extension](#)  
[Account information release form](#)  
[View lake levels](#)   
[How to read your meter](#)

### MORE ABOUT SRP

[Careers](#)  
[Newsroom](#)  
[SRP Blog](#)  
[Problem resolution](#)  
[Supplier information](#)  
[SRP facts](#)

### EN ESPAÑOL

[MiSRP.com](#)  
[AhoraConSRP.com](#)  
[SRPyAgua.com](#)

### CONTACT US

Residential electric: (602) 236-8888  
 Business electric: (602) 236-8833  
 SRP irrigation: (602) 236-3333  
 La Ufesa: (602) 236-1111  
[Email us](#)

# PROJECT HUCKLEBERRY

SRP supports long-term economic development in the communities it serves by providing reliable power to its customers.

HOME PROJECT NEED AND BENEFIT PUBLIC PROCESS NEWS CONTACT SRP

## WHY IS THIS PROJECT NEEDED?

On Aug. 12, 2021, Meta announced a development plan for its Mesa Data Center in Mesa, Arizona. The data center site is located on a 389-acre parcel of land at the southeast corner of Elliot and Ellsworth roads.

The Mesa Data Center is expected to create approximately 100 permanent high-tech, high-wage jobs and approximately 1,500 jobs during its construction. The development represents a continuation of technology sector growth in Arizona, especially data center growth for which the Phoenix area recently ranked second nationally.

SRP supports long-term economic development in the communities it serves by providing reliable power to its customers. The Mesa Data Center and other industrial customers in the area require SRP to provide reliable power to support their ongoing growth. SRP serves the electrical load in the area using a network of 69kV lines connect to three nearby 230kV stations located in the City of Mesa and the Town of Gilbert. Connecting the Mesa Data Center directly to SRP's 230kV system meets the customer's reliability needs while balancing demand across SRP's remaining 69kV network.

To meet the customer's December 2022 in-service date, SRP will serve the Mesa Data Center from the 69 kV system and build the new Prickly Pear 69 kV Switchyard. To meet the ultimate reliability and power quality requirements from Meta, Project Huckleberry will connect the data center to SRP's 230 kV transmission system. With the Prickly Pear 69 kV Switchyard in place, SRP intends to construct two 230 kV transmission circuits for the Mesa Data Center by April 2024. By utilizing the existing 69kV infrastructure to meet Meta's initial schedule request, the quantity of new required 230kV transmission circuits is reduced from three to two. As the primary beneficiary of Project Huckleberry, Meta is funding the cost of SRP's electrical infrastructure required to serve the Mesa Data Center.

## PROJECT MAPS

### Project Study Area

Below is a map showing the Project Huckleberry components for which SRP is seeking a Certificate of Environmental Compatibility (CEC). **Note that this is the total study area, which includes existing and planned construction for SRP infrastructure as well as customer owned facilities which are not included in the CEC application.**



### Project Details Map #1

The map below indicates (in green) the roughly half-mile transmission line and Substation in which SRP is seeking for CEC approval.



## Project Details Map #1

The map below indicates (in green) the roughly half-mile transmission line and Substation in which SRP is seeking for CEC approval.



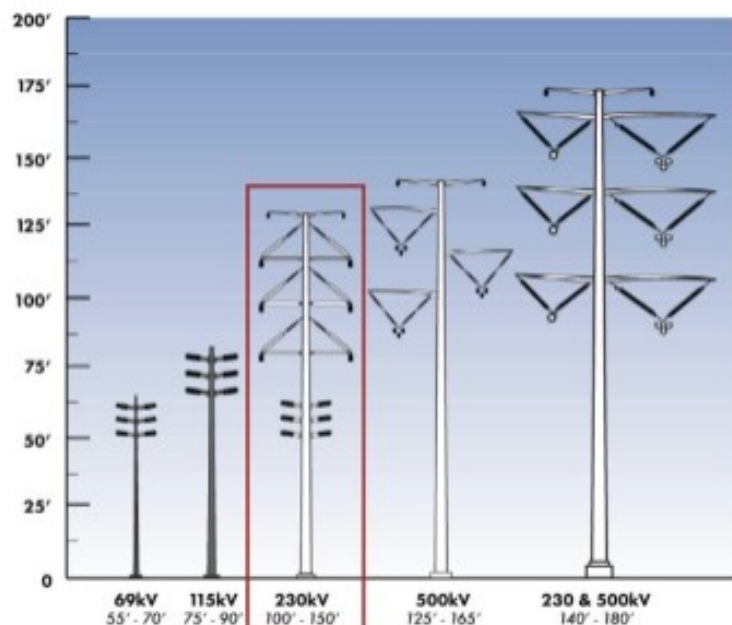
## Project Details Map #2

This map provides the same details (in green) of the only components that SRP is seeking CEC approval, but overlaid on a satellite based aerial image.

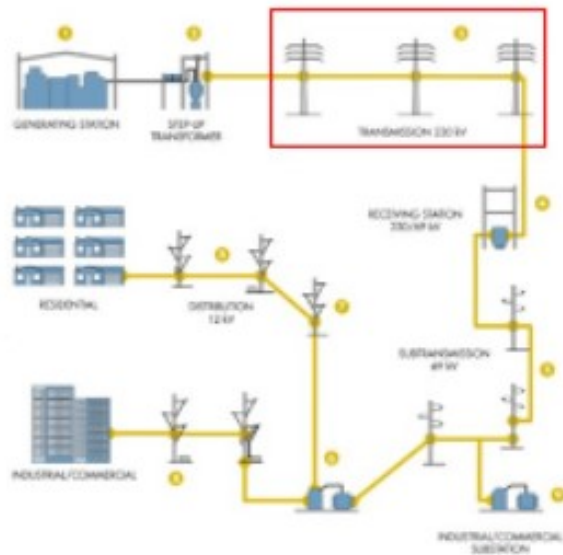


## TRANSMISSION LINE STRUCTURE TYPES

Below is the transmission structure type that will be used for the project.



## HOW ELECTRICITY GETS TO YOU



### SELF SERVICE

[Get text alerts](#)  
[Request a street light repair](#)  
[Request payment extension](#)  
[Account information release form](#)  
[View lake levels](#)  
[How to read your meter](#)

### MORE ABOUT SRP

[Careers](#)  
[Newsroom](#)  
[SRP Blog](#)  
[Problem resolution](#)  
[Supplier information](#)  
[SRP facts](#)

### EN ESPAÑOL

[MiSRP.com](#)  
[Ahora Con SRP.com](#)  
[SRPyAgua.com](#)

### CONTACT US

**Residential electric:** (602) 236-8888  
**Business electric:** (602) 236-8833  
**SRP irrigation:** (602) 236-3333  
**La Línea:** (602) 236-1111  
[Email us](#)



[SRP Privacy Policy](#) and [SRP Website Terms & Conditions](#)  
1996 • SRP



# PROJECT HUCKLEBERRY

SRP supports long-term economic development in the communities it serves by providing reliable power to its customers.

[HOME](#)
[PROJECT NEED AND BENEFIT](#)
[PUBLIC PROCESS](#)
[NEWS](#)
[CONTACT SRP](#)

## SRP PUBLIC PROCESS ENGAGEMENT OPPORTUNITIES

The SRP public process allows the public to provide valuable feedback to the project team prior to SRP filing an application with the Arizona Corporation Commission (ACC).

SRP will host an in-person open house on May 3, 2022, from 4:30 to 6:30 p.m. at the Eastmark Visitor and Community Center, located at 10100 E. Ray Road, Mesa, AZ 85212. The open house includes information stations with experts who can respond to questions as well as visual aids.

[Sign up for the Open House](#)

## PROJECT AND SITING OVERVIEW


SRP has [project and siting overview videos](#) that can be viewed on demand 24 hours a day.

[Click here to view videos](#)

## PAST EVENTS

Date/Time	Details	Location
March 22, 2022 5:30–6:30 p.m.	Live online public open house meetings. <a href="#">View presentation</a> .	Online
March 23, 2022 5:30–6:30 p.m.		

### SELF SERVICE

[Get text alerts](#)  
[Request a street light repair](#)  
[Request payment extension](#)  
[Account information release form](#)  
[View lake levels](#)   
[How to road your motor](#)

### MORE ABOUT SRP

[Careers](#)  
[Newsroom](#)  
[SRP Blog](#)  
[Problem resolution](#)  
[Supplier information](#)  
[SRP facts](#)

### EN ESPAÑOL

[MiSRP.com](#)  
[AhoraConSRP.com](#)  
[SRPyAgua.com](#)

### CONTACT US

Residential electric: (602) 236-8888  
 Business electric: (602) 236-8833  
 SRP irrigation: (602) 236-3333  
 La Ufesa: (602) 236-1111  
[Email us](#)



# PROJECT HUCKLEBERRY

SRP supports long-term economic development in the communities it serves by providing reliable power to its customers.

HOME

PROJECT NEED AND BENEFIT

PUBLIC PROCESS

NEWS

CONTACT SRP

## NEWS ARCHIVE

See the latest project news and announcements below.

### Mar. 4, 2022: SRP Announces Proposed Mesa-Based Half-mile Transmission Line and Substation to Serve Meta Data Center

SRP today announced a proposed half-mile 230 kV transmission line and substation to serve energy to a data center being built for Meta (formerly Facebook), located in Mesa and slated to be fully operational by 2024. [Read more.](#)

### Aug. 12, 2021: SRP Signs Contracts for 500 MW of New Renewable Energy from Three New Solar Plants

Following its recent announcement to expand utility-scale solar resources to 2,025 megawatts (MW) by 2025, Salt River Project (SRP) today announced three new solar energy plants that will deliver a total of 500 MW of renewable energy. Meta announced it will be SRP's largest off-taker of these new clean energy resources, utilizing 450 MW of the combined solar capacity to support Meta's newly announced data center in Mesa, Arizona, and help meet the company's 100% renewable energy commitments. [Read more.](#)



## SELF SERVICE

[Get text alerts](#)  
[Request a street light repair](#)  
[Request payment extension](#)  
[Account information release form](#)  
[View lake levels](#)  
[How to read your meter](#)

## MORE ABOUT SRP

[Careers](#)  
[Newsroom](#)  
[SRP Blog](#)  
[Problem resolution](#)  
[Supplier information](#)  
[SRP facts](#)

## EN ESPAÑOL

[MiSRP.com](#)  
[AhorroConSRP.com](#)  
[SRPyAgua.com](#)

## CONTACT US

Residential electric: (602) 236-8888  
 Business electric: (602) 236-8833  
 SRP irrigation: (602) 236-3333  
 La Unión: (602) 236-1111  
[Email us](#)



## PROJECT HUCKLEBERRY

SRP supports long-term economic development in the communities it serves by providing reliable power to its customers.

HOME

PROJECT NEED AND BENEFIT

PUBLIC PROCESS

NEWS

CONTACT SRP

### CONTACT SRP ABOUT PROJECT HUCKLEBERRY

Please use the contact form or call **(855) 584-1484** to submit your questions or comments.

For more information about the Certificate of Environmental Compatibility process, please visit the [Arizona Corporation Commission \(ACC\) website](#).

First Name

M.I. (Optional)

Last Name

Address

ZIP:

City:

State:

Email address (Optional) To receive project updates, email is required.

Phone number (Optional)

Comments or Questions: (Optional)

Submit

#### SELF SERVICE

Get text alerts  
Request a street light repair  
Request payment extension  
Account information release form  
View rate levels  
How to read your meter

#### MORE ABOUT SRP

Careers  
Newsroom  
SRP Blog  
Problem resolution  
Supplier information  
SRP facts

#### EN ESPAÑOL

MySRP.com  
AkomaCenSRP.com  
SRPyAgua.com

#### CONTACT US

Residential electric: (602) 236-8888  
Business electric: (602) 236-8833  
SRP irrigation: (602) 236-3333  
Le ÚRea: (602) 236-1111  
Email us

# News Release



Media Relations • (602) 236-2500 • [srpnet.com/newsroom](http://srpnet.com/newsroom)

SRPConnect on:     

Erica Sturwold, SRP Media Relations  
(602) 236-2576  
[Erica.Sturwold@srpnet.com](mailto:Erica.Sturwold@srpnet.com)  
Twitter: @SRPerica

For Immediate Release March 4, 2022

## SRP Announces Proposed Mesa-Based Half-mile Transmission Line and Substation to Serve Meta Data Center

SRP today announced a proposed half-mile 230 kV transmission line and substation to serve energy to a data center being built for Meta (formerly Facebook), located in Mesa, and slated to be fully operational by 2024.

Meta's data center is under development at the southeast corner of Elliot and Ellsworth Roads. SRP's proposed "Project Huckleberry" outlines a new double-circuit 230 kV power line to be constructed from the already approved Southeast Powerlink along an existing flood control channel to the new proposed "Prickly Pear Substation" located on the Mesa data center site. As the primary beneficiary of Project Huckleberry, Meta is funding the cost of SRP's electrical infrastructure required to serve their facility.

"SRP supports long-term economic development in the communities we serve by providing reliable power to our customers which include large commercial employers moving to the Valley," said SRP's CEO and General Manager Mike Hummel. "This project is critical to Meta, the City of Mesa and all of Arizona."

The Data Center continues the Phoenix area's growth in the technology sector and is expected to create approximately 100 high-wage jobs upon its completion and around 1,500 jobs during its construction. To meet the initial need for Meta's load by December 2022, SRP will serve the Mesa data center from the 69 kV system and build the new Prickly Pear 69 kV switchyard.

SRP is sharing project information with nearby customers, property owners and stakeholders located in the established notification area. SRP will host live online open houses about the project on March 22 and 23, 2022 at 5:30 p.m. Additional open houses may take place, subject to CDC COVID-19 guidelines. These will happen prior to SRP filing a Certificate of Environmental Compatibility (CEC) with the Arizona Corporation Commission (ACC).

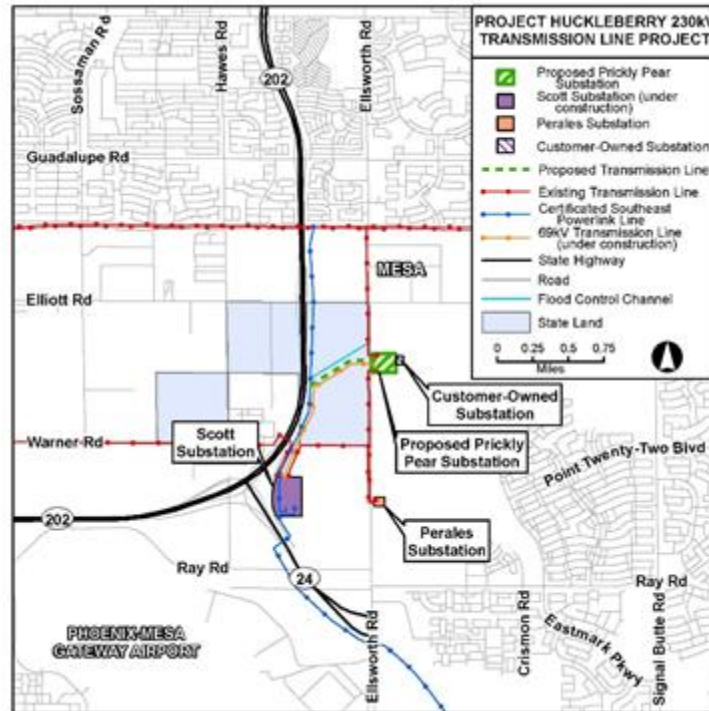
**Media Relations • (602) 236-2500 • [srpnet.com/newsroom](http://srpnet.com/newsroom)**

SRP Proprietary-General Use



The CEC process includes public hearings with the Arizona Power Plant and Transmission Line Siting Committee before seeking final approval from the ACC. Hearings before the Line Siting Committee will occur in late June.

More information on Project Huckleberry, including links to join the online open house, will be posted to the project website as they become available, visit [srp.net/mesahuckleberry](http://srp.net/mesahuckleberry). Community members can also call with any questions about the project using the project hotline, (855) 584-1484.

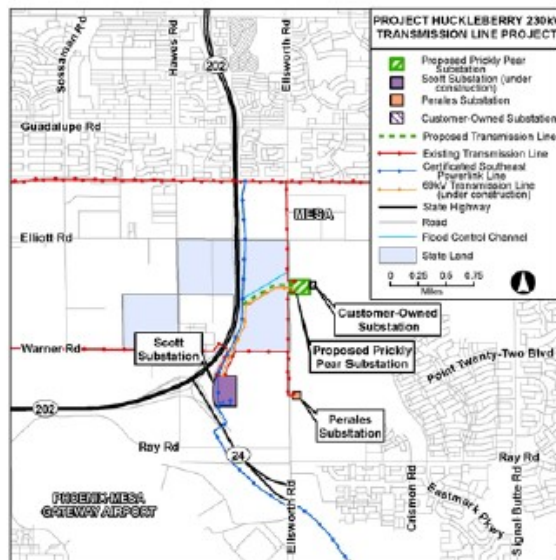


[www.srpnet.com/newsroom](http://www.srpnet.com/newsroom)

## ANNOUNCING PROJECT HUCKLEBERRY

SRP has received a request to provide energy to a new data center for Meta (formerly Facebook) located in Mesa, Arizona. This project will require SRP to build an approximate half-mile 230 kV transmission line and substation to serve the data center located at the southeast corner of Elliott and Ellsworth Roads. The data center continues the Phoenix area's growth in the technology sector and is expected to create approximately 100 high-wage jobs upon its completion and around 1,500 jobs during its construction. SRP supports long-term economic development in the communities it serves by providing reliable power to its customers.

We are notifying customers, property owners and stakeholders about the proposed project.



SRP will host live online open houses about the project on March 22 and 23, 2022 at 5:30 p.m. Additional open houses may take place, subject to CDC COVID-19 guidelines, prior to filing the CEC application. More information, including links to join the online open house, will be posted to the project website as they become available.

SRP is preparing an application seeking a Certificate of Environmental Compatibility (CEC) to be filed with the Arizona Corporation Commission (ACC). The CEC process includes public hearings with the Arizona Power Plant and Transmission Line Siting Committee before seeking final approval from the ACC. Hearings before the Line Siting Committee will occur in late June.

To learn more about this project, visit [srp.net/huckleberry](http://srp.net/huckleberry) or call (855) 584-1484.

Para obtener información en español sobre este proyecto, visite [srp.net/huckleberryESP](http://srp.net/huckleberryESP).

enusa | 3/2/22 | Printed on recycled paper



PAB4TB  
P.O. Box 52025  
Phoenix, AZ 85072-2025

PSRT STD  
U.S. POSTAGE  
PAID  
PHOENIX, AZ  
PERMIT NO. 395

FRONT

BACK

Instagram



srpconnect  
Sponsored



Learn more



srpconnect Propuesta de SRP: línea de transmisión de 230 kV y subestación para un centro de datos en Mesa. Sesiones son el 3/22 y 3/23.

Instagram



srpconnect  
Sponsored



Learn more



srpconnect SRP is proposing a 230 kV transmission line and substation for a new data center in Mesa. Virtual open houses on 3/22 & 3/23.



**Salt River Project** ✓

Sponsored · 🌐



Propuesta de SRP: línea de transmisión de 230 kV y subestación para un centro de datos en Mesa. Sesiones son el 3/22 y 3/23.



SRPNET.COM

**Anuncio del Proyecto  
Huckleberry**

LEARN MORE





**Salt River Project** ✓

Sponsored · 🌐



SRP is proposing a 230 kV transmission line and substation for a new data center in Mesa. Virtual open houses on 3/22 & 3/23.



SRPNET.COM

**Announcing Project  
Huckleberry**

LEARN MORE

**SRP**

Sponsored

**SRP Announces Project Huckleberry**

SRP has received a request to provide energy to a new data center for Meta in Mesa, Arizona. This will require SRP to build a 230 kV transmission line and substation at the southeast corner of Elliot and Ellsworth roads. The data center is expected to create around 100 high-wage jobs upon completion and 1,500 jobs during construction.

SRP is seeking a Certificate of Environmental Compatibility (CEC) to be filed with the Arizona Corporation Commission (ACC). Online open houses for the project will be held on March 22 and 23, 2022, at 5:30 p.m. More information will be posted to the project website as it becomes available.

To learn more, click below or call (855) 584-1484.

Para obtener información en español sobre este proyecto, haz clic en el enlace.



[Open house and project details.](#)

[Learn more](#)



**SRP**

Sponsored



### **SRP Announces Project Huckleberry**

SRP has received a request to provide energy to a new data center for Meta in Mesa, Arizon...[See more](#)



[Open house and project details.](#)

[Learn more](#)



# News Release



Delivering water and power™

Media Relations • (602) 236-2500 • [srpnet.com/newsroom](http://srpnet.com/newsroom)

SRPConnect on:     

Erica Sturwold, SRP Media Relations  
(602) 236-2576  
[Erica.Sturwold@srpnet.com](mailto:Erica.Sturwold@srpnet.com)  
Twitter: @SRPerica

For Immediate Release April 28, 2022

MEDIA ADVISORY:

## **Open House for Community Members to Learn About Proposed Transmission Line and Substation to Serve Meta Data Center**

### **WHAT:**

Salt River Project (SRP) will host an in-person open house event for the public to learn more about “Project Huckleberry,” the proposed half-mile 230 kV transmission line and substation to serve energy to a data center being built for Meta (formerly Facebook), located in Mesa and slated to be fully operational by 2024.

The data center continues the Phoenix area’s growth in the technology sector and is expected to create approximately 100 high-wage jobs upon its completion and around 1,500 jobs during its construction. SRP supports long-term economic development in the communities it serves by providing reliable power to its customers.

### **WHEN / WHERE:**

Tuesday, May 3, 2022  
4:30 – 6:30 p.m.  
Eastmark Visitor and Community Center  
10100 E. Ray Road, Mesa, AZ 85212

### **ONSITE CONTACT FOR MEDIA:**

Erica Sturwold  
[erica.sturwold@srpnet.com](mailto:erica.sturwold@srpnet.com)  
(602) 236-2576

*\*Media to contact Erica if planning to attend.*

**DETAILS:**

Meta's data center is under development at the southeast corner of Elliot and Ellsworth Roads. SRP's proposed Project Huckleberry outlines a new double-circuit 230 kV power line to be constructed from the already approved Southeast Powerlink along an existing flood control channel to the new proposed "Prickly Pear Substation" located on the Mesa data center site. As the primary beneficiary of Project Huckleberry, Meta is funding the cost of SRP's electrical infrastructure required to serve their facility.

SRP is preparing an application seeking a Certificate of Environmental Compatibility (CEC) to be filed with the Arizona Corporation Commission (ACC). The CEC process includes public hearings with the Arizona Power Plant and Transmission Line Siting Committee before seeking final approval from the ACC on the proposed project. Hearings before the Line Siting Committee will occur in late June. More information on Project Huckleberry is available at [srp.net/huckleberry](http://srp.net/huckleberry).

## ANNOUNCING PROJECT HUCKLEBERRY

### IN-PERSON OPEN HOUSE

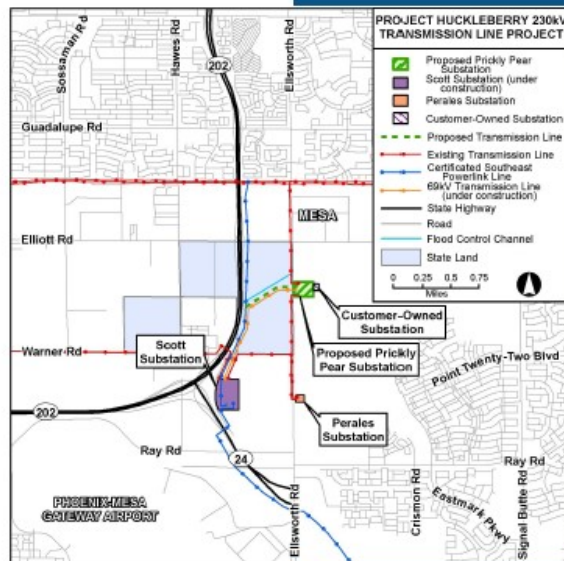
SRP has received a request to provide energy to a new data center for Meta (formerly Facebook) located in Mesa, Arizona. This project will require SRP to build an approximately half-mile 230 kV transmission line and substation to serve the data center located at the southeast corner of Elliot and Ellsworth roads.

The data center continues the Phoenix area's growth in the technology sector and is expected to create approximately 100 high-wage jobs upon its completion and around 1,500 jobs during its construction. SRP supports long-term economic development in the communities it serves by providing reliable power to its customers.

We are notifying customers, property owners and stakeholders about the proposed project.



Delivering water and power®



SRP will host an open house about the project on May 3, 2022, from 4:30 to 6:30 p.m. at the Eastmark Visitor and Community Center, located at 10100 E. Ray Road, Mesa, AZ 85212. Please visit [srp.net/huckleberry](http://srp.net/huckleberry) for a link to register.

SRP is preparing an application seeking a Certificate of Environmental Compatibility (CEC) to be filed with the Arizona Corporation Commission (ACC). The CEC process includes public hearings with the Arizona Power Plant and Transmission Line Siting Committee before seeking final approval from the ACC. Hearings before the Line Siting Committee will occur in late June.

To learn more about this project or to comment with questions or feedback, visit [srp.net/huckleberry](http://srp.net/huckleberry) or call (855) 684-1484.

Para obtener información en español sobre este proyecto, visite [srp.net/huckleberryESP](http://srp.net/huckleberryESP).

446363 | 03/22



PAB4TB  
P.O. Box 52025  
Phoenix, AZ 85072-2025

PR&RT STD  
U.S. POSTAGE  
PAID  
PHOENIX, AZ  
PERMIT NO. 376

FRONT

BACK

Instagram



srpconnect  
Sponsored



Learn more



srpconnect SRP propone: línea de transmisión de 230 kV y subestación para centro de datos en Mesa. Reunión abierta al público; 3 de mayo.

Instagram



srpconnect  
Sponsored



Learn more



srpconnect SRP is proposing a 230 kV transmission line and substation for a new data center in Mesa. In-person open house May 3.



**Salt River Project** ✓

Sponsored · 🌐



SRP propone: línea de transmisión de 230 kV y subestación para centro de datos en Mesa.  
Reunión abierta al público; 3 de mayo.



SRPNET.COM

**Reunión Abierta al Público**

Consulte: Proyecto Huckleberry ...

LEARN MORE



**Salt River Project** ✓

Sponsored · 🌐



SRP is proposing a 230 kV transmission line and substation for a new data center in Mesa. In-person open house May 3.



SRPNET.COM

**In-person Open House**

Learn about SRP's Project Huckl...

LEARN MORE





SRP

Sponsored



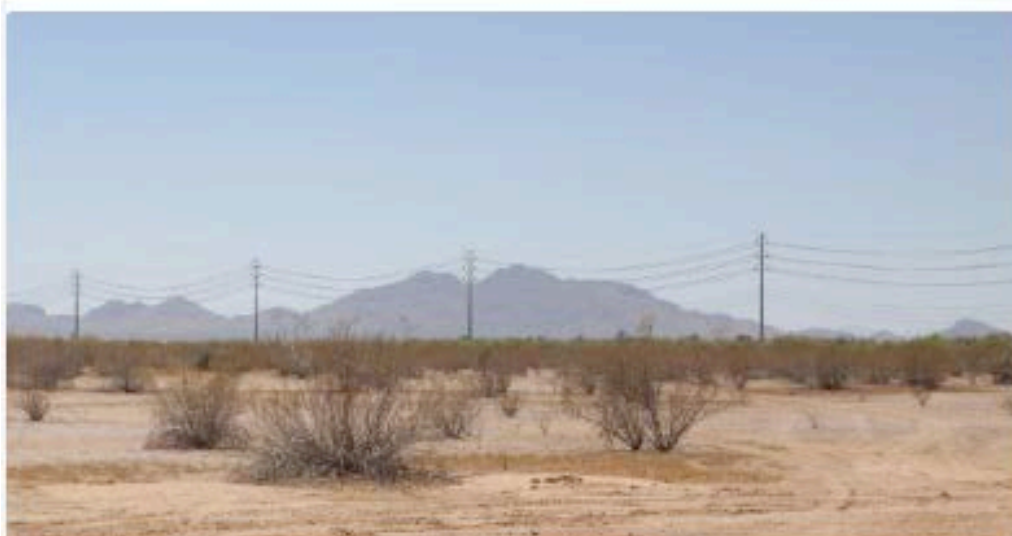
## SRP Project Huckleberry: In-Person Open House May 3.

SRP has received a request to provide energy to a new data center for Meta in Mesa, Arizona. This will require SRP to build a 230 kV transmission line and substation near the southeast corner of Elliot and Ellsworth roads. The data center is expected to create around 100 high-wage jobs upon completion and 1,500 jobs during construction.

SRP is seeking a Certificate of Environmental Compatibility (CEC) to be filed with the Arizona Corporation Commission (ACC). An in-person open house about the project will be held May 3 from 4:30 to 6:30 p.m. at the Eastmark Visitor and Community Center, located at 10100 E. Ray Road, Mesa, AZ 85212.

To learn more, visit [srp.net/huckleberry](https://srp.net/huckleberry) or call (855) 584-1484.

Para obtener información en español sobre este proyecto, visite [srp.net/huckleberryESP](https://srp.net/huckleberryESP).



Learn more at [srp.net/huckleberry](https://srp.net/huckleberry).

[Learn more](https://srp.net/huckleberry)



**Subject Line:** Join Us: Project Huckleberry Live Online Open House

**Preheader Text:** SRP supports long-term economic development in the Valley.

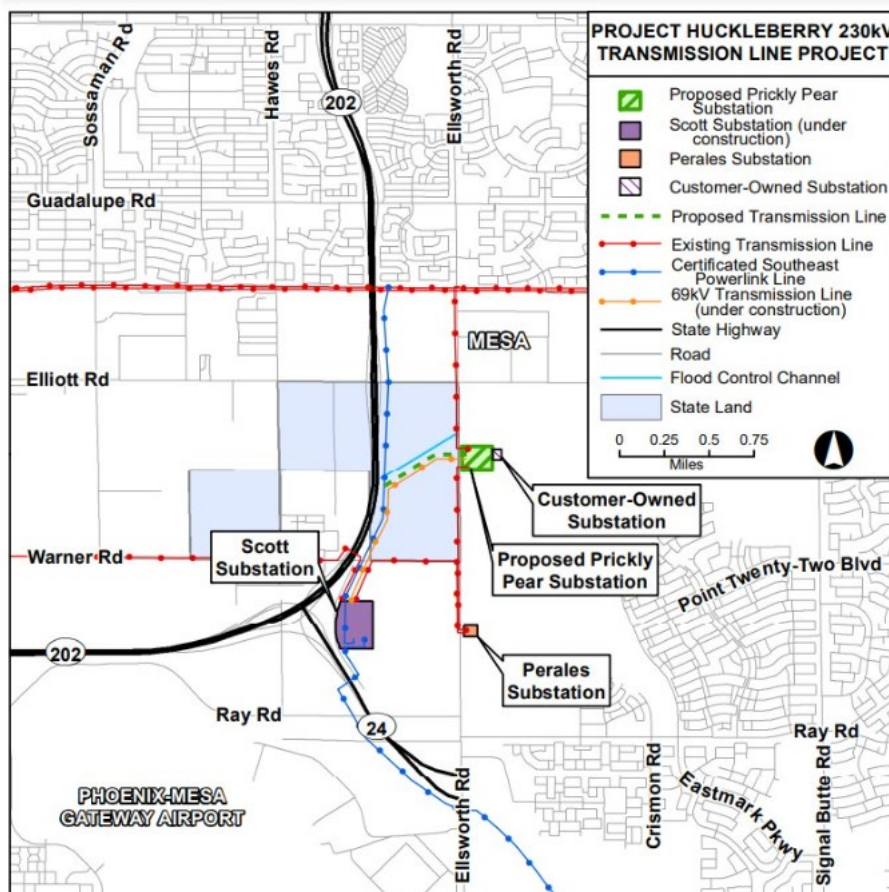


Delivering water and power®

## Announcing Project Huckleberry

SRP has received a request to provide energy to a new data center for Meta located in Mesa, Arizona. This project will require SRP to build an approximate half-mile 230 kV transmission line and substation to serve the data center located at the southeast corner of Elliot and Ellsworth Roads. The data center continues the Phoenix area's growth in the technology sector and is expected to create approximately 100 high-wage jobs upon its completion and around 1,500 jobs during its construction. SRP supports long-term economic development in the communities it serves by providing reliable power to its customers.

We are notifying customers, property owners and stakeholders about the proposed project.



SRP will host live online open houses about the project on dates and times listed below. Additional open houses may take place, subject to CDC COVID-19 guidelines, prior to filing the CEC application. Click on the link or call the hotline below to reserve your spot.

### Live Online Open House Dates & Times

**TUESDAY, MAR. 22, 2022**  
5:30 to 6:30 p.m.

**WEDNESDAY, MAR. 23, 2022**  
5:30 to 6:30 p.m.

Reserve your spot

You can also call **(855) 584-1484** to reserve a time slot.

SRP is preparing an application seeking a Certificate of Environmental Compatibility (CEC) to be filed with the Arizona Corporation Commission (ACC). The CEC process includes public hearings with the Arizona Power Plant and Transmission Line Siting Committee before seeking final approval from the ACC. Hearings before the Line Siting Committee will occur in late June.

For more information about the project, please visit [srp.net/huckleberry](http://srp.net/huckleberry).

Para obtener información en español sobre este proyecto, visite [srp.net/huckleberryESP](http://srp.net/huckleberryESP).



This email was sent to: [Email \(email\)](#)

This email was sent by: Salt River Project, 1500 N. Mill Ave., Tempe, AZ 85281

We respect your right to privacy. [View our policy.](#)

[English Unsubscription link](#)

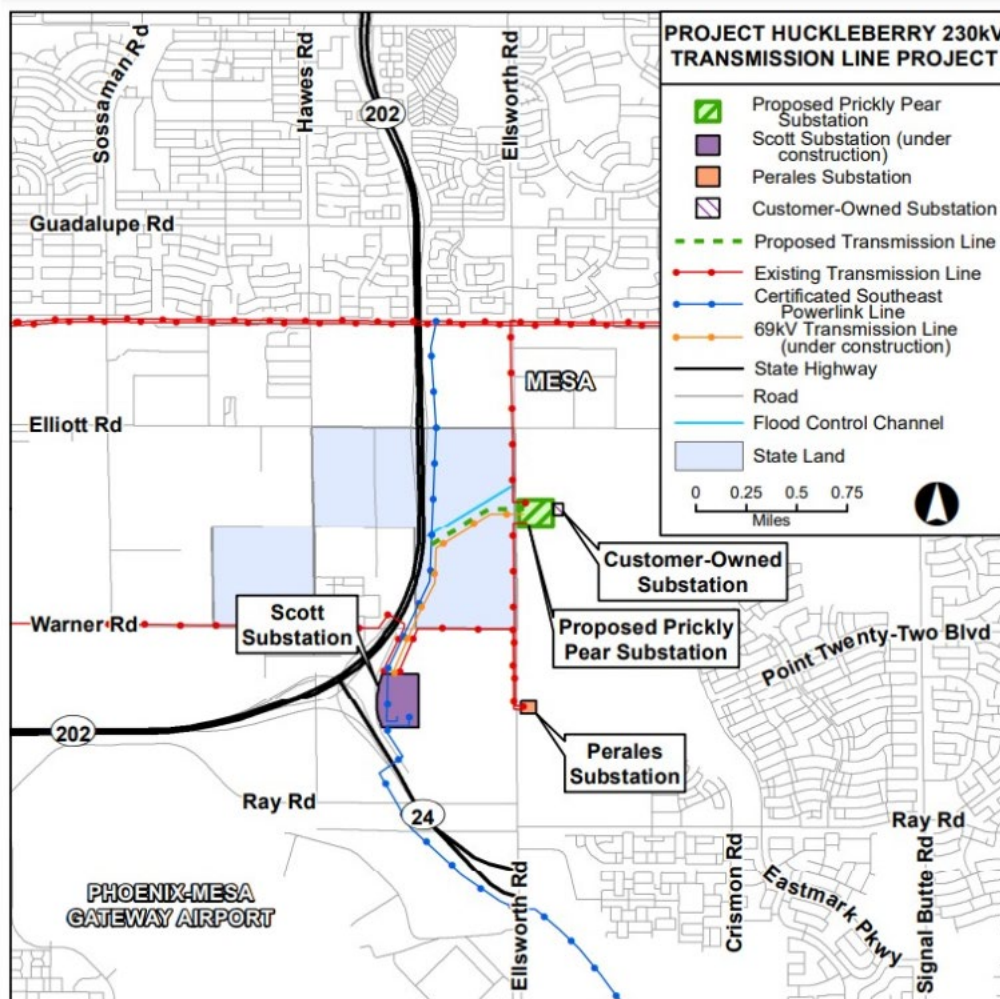


Delivering water and power®

## Announcing Project Huckleberry: In-Person Open House

SRP has received a request to provide energy to a new data center for Meta located in Mesa, Arizona. This project will require SRP to build an approximate half-mile 230 kV transmission line and substation to serve the data center located at the southeast corner of Elliot and Ellsworth Roads. The data center continues the Phoenix area's growth in the technology sector and is expected to create approximately 100 high-wage jobs upon its completion and around 1,500 jobs during its construction. SRP supports long-term economic development in the communities it serves by providing reliable power to its customers.

We are notifying customers, property owners and stakeholders about the proposed project.



SRP will host an open house about the project on the date and time listed below. Click on the link or call the hotline below to reserve your spot.

## In-Person Open House

**TUESDAY, MAY 3, 2022**

4:30 to 6:30 p.m.

Eastmark Visitor and Community Center

10100 E. Ray Road

Mesa, AZ 85212

[Register](#)

You can also call **(855) 584-1484** to register.

SRP is preparing an application seeking a Certificate of Environmental Compatibility (CEC) to be filed with the Arizona Corporation Commission (ACC). The CEC process includes public hearings with the Arizona Power Plant and Transmission Line Siting Committee before seeking final approval from the ACC. Hearings before the Line Siting Committee will occur in late June.

For more information about the project, please visit [srp.net/huckleberry](http://srp.net/huckleberry).

Para obtener información en español sobre este proyecto, visite [srp.net/huckleberryESP](http://srp.net/huckleberryESP).



This email was sent to: [jake.sparks@srpnet.com](mailto:jake.sparks@srpnet.com)

This email was sent by: Salt River Project, 1500 N. Mill Ave., Tempe, AZ 85281

We respect your right to privacy. [View our policy.](#)

If you would like to stop receiving emails from SRP, [unsubscribe](#).

# **Project Huckleberry**

## **230kV Transmission Line**

### **Project**

**open house**

# AGENDA

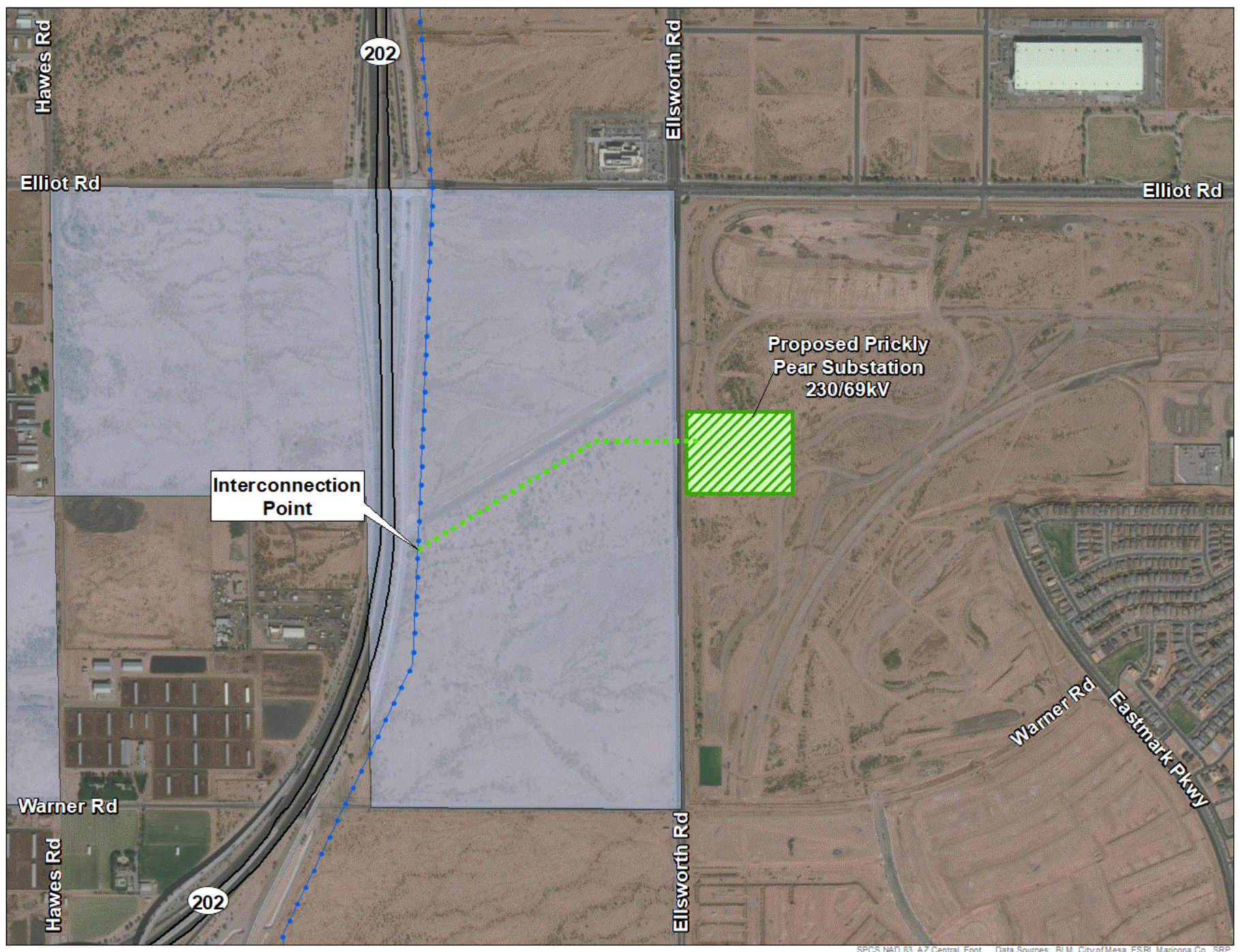
- Welcome – Samantha Horgen
- Introductions – Kevin Woolfolk, Project Manager
- Agenda for the Meeting
  - Video Vignettes
    - Purpose and Need
    - Project Routing
    - Regulatory and Environmental
- Additional Project Details – Kevin Woolfolk
- Questions and Answers (using Q&A feature)

**Project Information Line:**  
**(855) 584-1484**

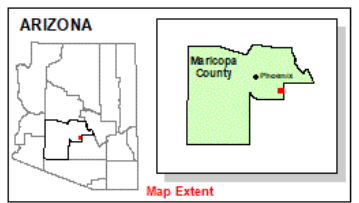
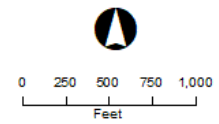
**Project Website:**  
**[srp.net/huckleberry](http://srp.net/huckleberry)**


# Video Vignettes





- LEGEND**
- Proposed Double-Circuit 230kV Transmission Line
  - Proposed Prickly Pear 230/69kV Substation
  - State Highway
  - Certificated Southeast Power Link 230kV Transmission Line
  - State Land



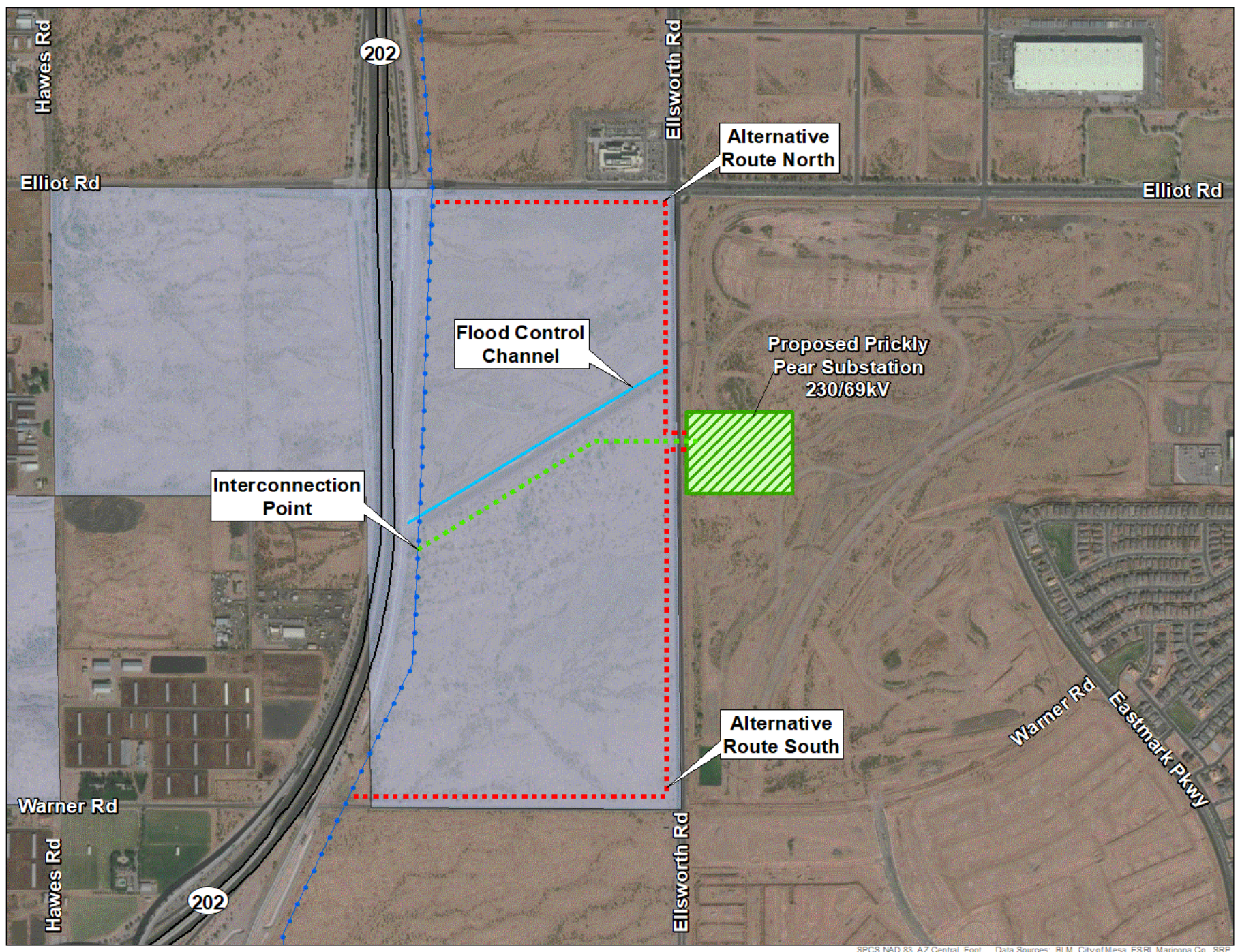


**PROJECT HUCKLEBERRY**  
PROJECT DETAILS

Map Extent: City of Mesa, AZ

Date: 3.2.22      Author: ckw





- LEGEND**
- Proposed Double-Circuit 230kV Transmission Line
  - Proposed Route Alternatives Analyzed
  - Proposed Prickly Pear 230/69kV Substation
  - State Highway
  - Certificated Southeast Power Link 230kV Transmission Line
  - Flood Control Channel
  - State Land

0 250 500 750 1,000 Feet

ARIZONA

Map Extent

**SRP**

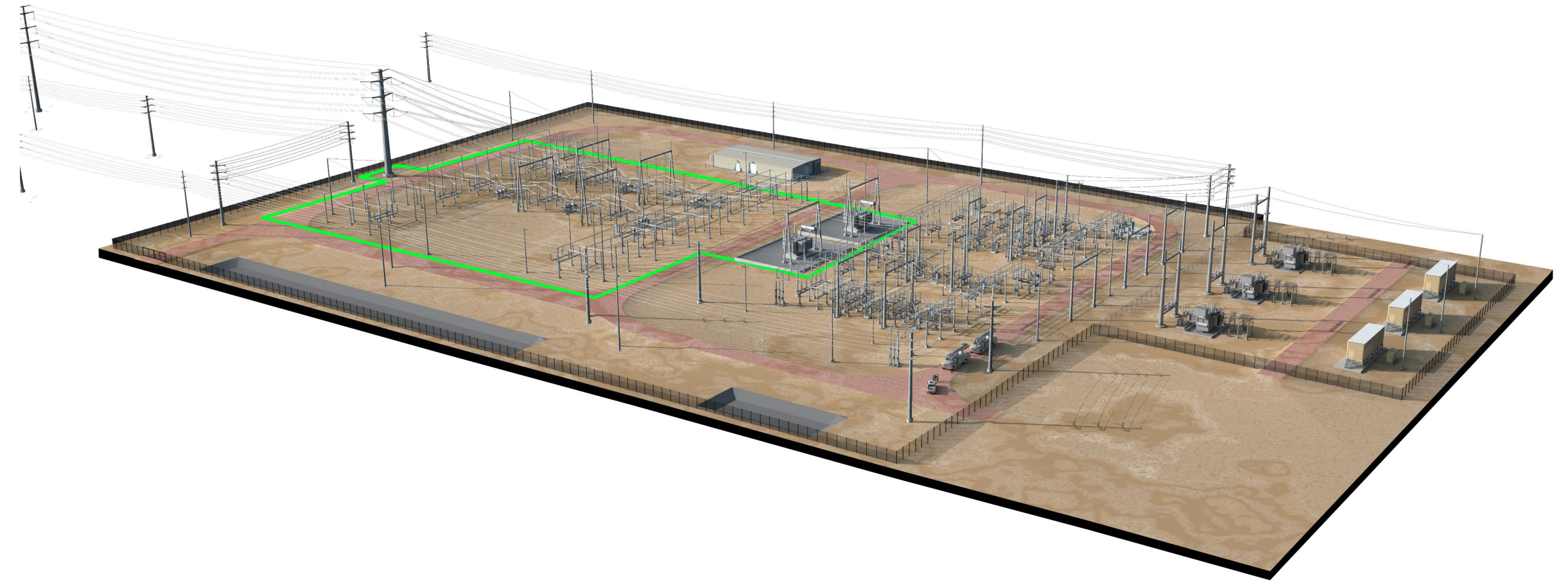
PROJECT HUCKLEBERRY  
PROJECT ROUTING DETAILS

Map Extent: City of Mesa, AZ

Date: 3.8.22 Author: ckw



# Substation Rendering







## LEGEND

### Visual Resources

- Key Observation Point (KOP)  
Location and Direction

### Project Huckleberry Components

- Proposed Double-Circuit 230kV Transmission Line
- Proposed Prickly Pear 230/69kV Substation
- Project Study Area

### Other Components

- Existing 500kV Transmission Line
- Existing 230kV Transmission Line with 69kV Underbuild
- Existing 69kV Transmission Line
- Certificated Southeast Power Link 230kV Transmission Line
- 69kV Transmission Line (under construction)
- Customer-Dedicated 69kV Line (under construction)
- State Highway
- Major Road
- Flood Control Channel
- Existing Substation
- Certificated Scott 230/69kV Substation
- Customer-Owned 69/34.5kV Substation (under construction)

### Jurisdictional Land Ownership

- State Land



0 500 1,000 1,500 2,000  
Feet



PROJECT HUCKLEBERRY  
EXHIBIT E-1 KEY OBSERVATION POINTS

Map Extent: City of Mesa, AZ

Date: 3.4.22

Author: ckw



# KOP #1

East Elliot Road & South Ellsworth  
Road – Looking South

Existing View



Proposed View







# LEGEND

## Visual Resources

- Key Observation Point (KOP)  
Location and Direction

## Project Huckleberry Components

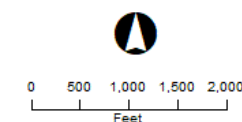
- Proposed Double-Circuit 230kV Transmission Line
- Proposed Prickly Pear 230/69kV Substation
- Project Study Area

## Other Components

- Existing 500kV Transmission Line
- Existing 230kV Transmission Line with 69kV Underbuild
- Existing 69kV Transmission Line
- Certificated Southeast Power Link 230kV Transmission Line
- 69kV Transmission Line (under construction)
- Customer-Dedicated 69kV Line (under construction)
- State Highway
- Major Road
- Flood Control Channel
- Existing Substation
- Certificated Scott 230/69kV Substation
- Customer-Owned 69/34.5kV Substation (under construction)

## Jurisdictional Land Ownership

- State Land



PROJECT HUCKLEBERRY  
EXHIBIT E-1 KEY OBSERVATION POINTS

Map Extent: City of Mesa, AZ

Date: 3.4.22

Author: ckw



# KOP #2

North end of South Eastmark  
Parkway— Looking Northwest

Existing View



Proposed View







## LEGEND

### Visual Resources

- Key Observation Point (KOP)  
Location and Direction

### Project Huckleberry Components

- Proposed Double-Circuit 230kV Transmission Line
- Proposed Prickly Pear 230/69kV Substation
- Project Study Area

### Other Components

- Existing 500kV Transmission Line
- Existing 230kV Transmission Line with 69kV Underbuild
- Existing 69kV Transmission Line
- Certificated Southeast Power Link 230kV Transmission Line
- 69kV Transmission Line (under construction)
- Customer-Dedicated 69kV Line (under construction)
- State Highway
- Major Road
- Flood Control Channel
- Existing Substation
- Certificated Scott 230/69kV Substation
- Customer-Owned 69/34.5kV Substation (under construction)

### Jurisdictional Land Ownership

- State Land



0 500 1,000 1,500 2,000  
Feet



PROJECT HUCKLEBERRY  
EXHIBIT E-1 KEY OBSERVATION POINTS

Map Extent: City of Mesa, AZ

Date: 3.4.22

Author: ckw



# KOP #3

South Eastmark Parkway & East  
Point Twenty-Two Boulevard –  
Looking Northwest

Existing View



Proposed View



# Siting Process

# Siting Process

## Arizona Corporation Commission (ACC) Transmission Line Siting Committee Process

File Certificate of Environmental Compatibility (CEC)

*Anticipated filing Mid May 2022*

Siting Committee Public Hearings (30-60 days after filing CEC)

*Anticipated late June 2022*

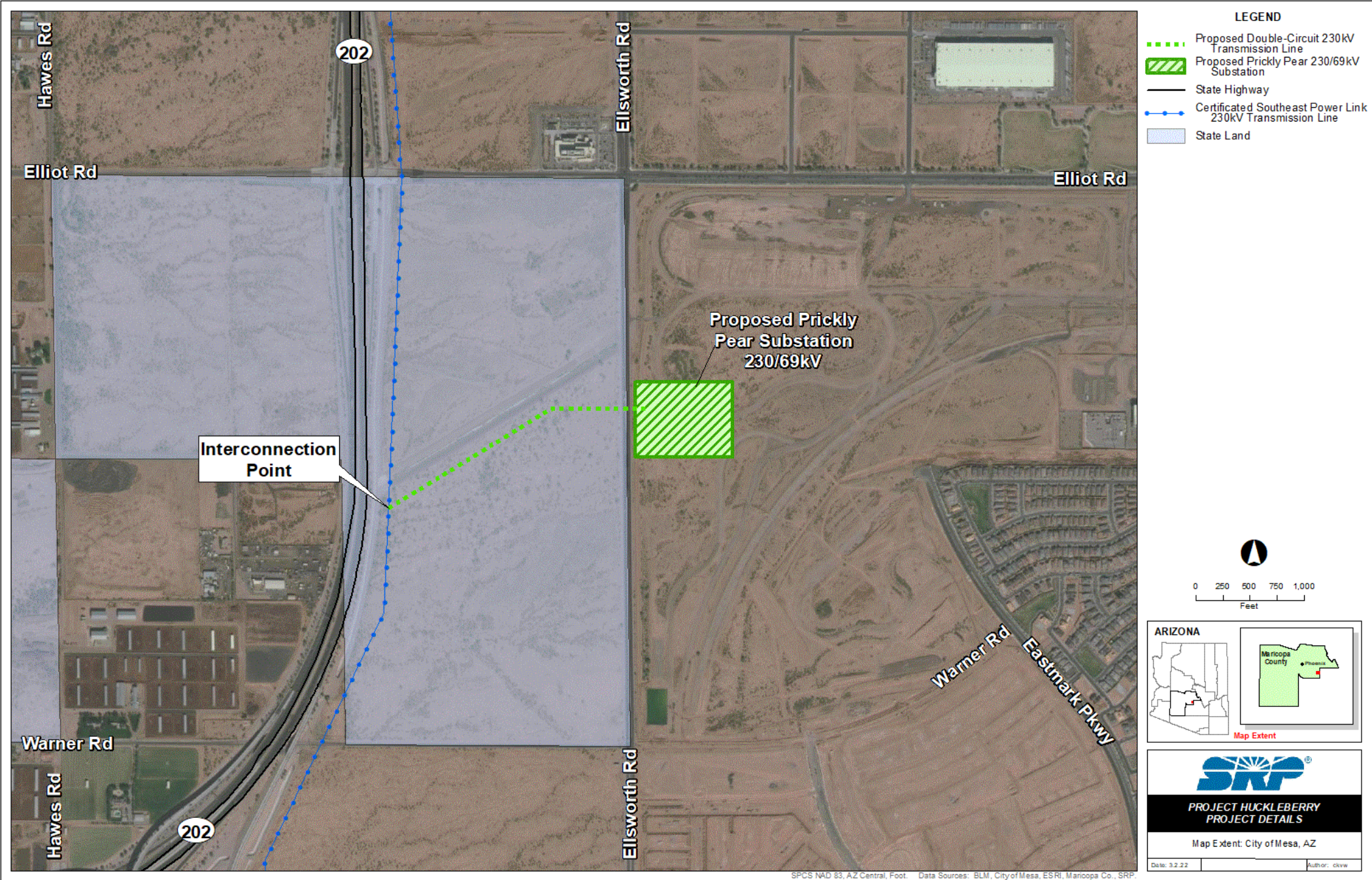
ACC Public Hearings (minimum 30 days after Siting Committee Decision)

# Q&A Section

Project Information Line:  
(855) 584-1484

Project Website:  
[srp.net/huckleberry](http://srp.net/huckleberry)







# thank you!

Project Information Line:  
(855) 584-1484

# **Project Huckleberry**

## **230 kV Transmission Line Project**

# Open House

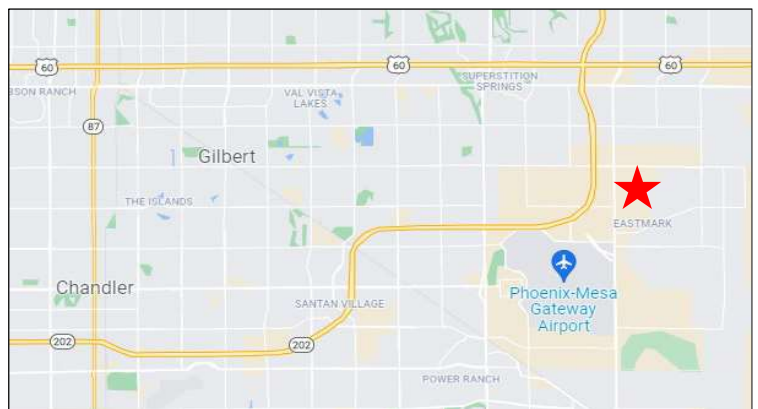
# **Welcome**

## **& Sign-in**

# Project Description & Purpose & Need

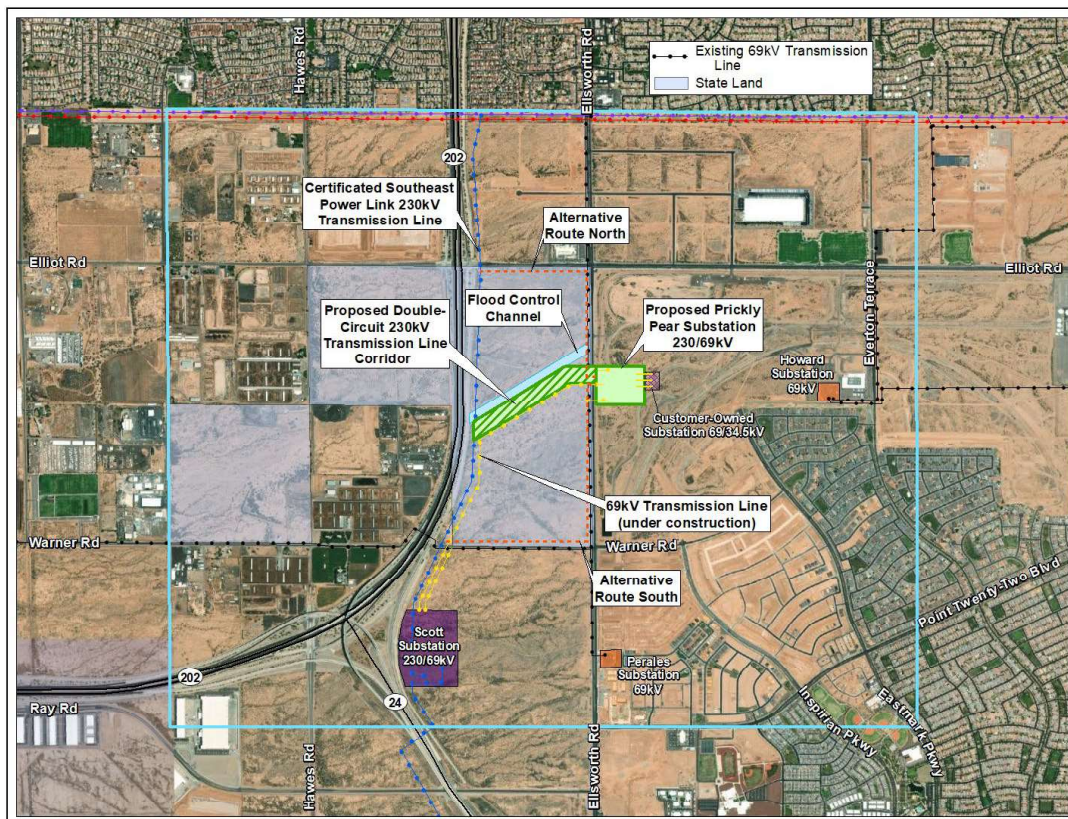
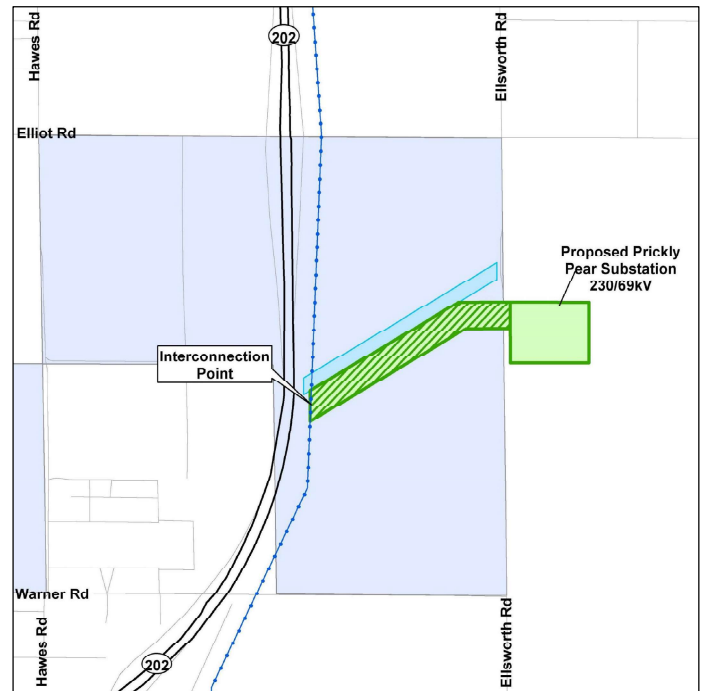
## Project Purpose & Need

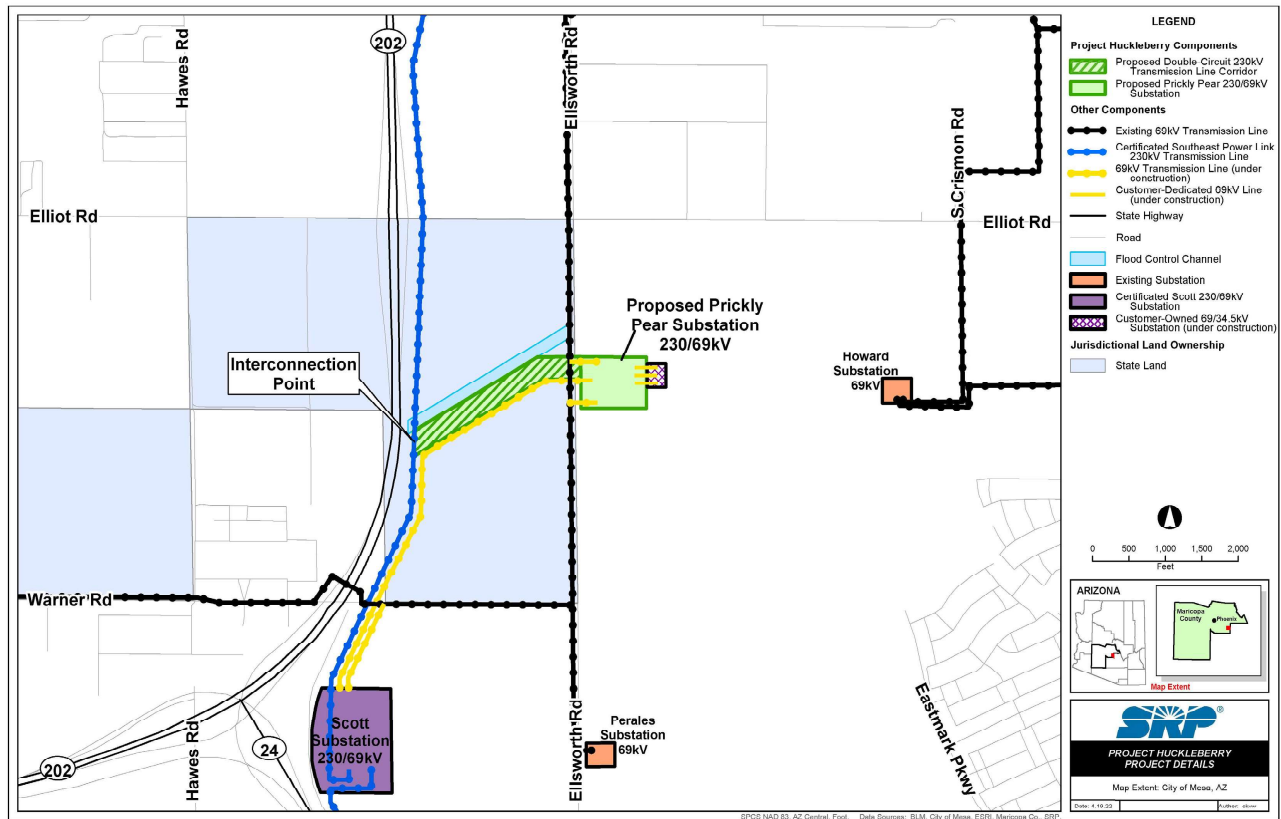
- **New Meta Mesa Data Center**
  - Announced August 2021
  - Elliot Rd & Ellsworth Rd in Mesa, Arizona
- **New 230 kV Transmission Infrastructure**
  - Provides Reliable Power to Data Center Site
  - New SRP-Owned Dedicated Substation
  - New 230 kV Transmission Line (lines above 115 kV require a Certificate of Environmental Compatibility from the Arizona Corporation Commission)



# Project Overview

- Construction of electrical facilities to provide requested energy for the Mesa Data Center
  - 230 kV Double-Circuit Transmission Line Corridor (0.5 mile)
  - Proposed Prickly Pear 230 kV Substation





# Engineering & Construction





## Typical 230 kV Poles

- Double-Circuit structures
- 120 to 180 feet tall
- Poles are placed every 600 to 900 feet
- Diameter of the base of pole is approximately 4 feet



## Substation Rendering



**Regulatory  
& Environmental**

# ACC Siting Process

- **File Certificate of Environmental Compatibility (CEC) (required for lines above 115 kV)**
  - *Anticipated filing week of May 9, 2022*
- **Siting Committee Public Hearings (30-60 days after filing CEC)**
  - *Monday, June 27, 2022 at 1:00 p.m. continuing on June 28-July 1 beginning at 9:00 a.m. each day (as needed)*
  - *There will be a Special Public Comment Session*
- **Arizona Corporation Commission (ACC) Decision (minimum 30 days after Siting Committee Decision)**
  - *Anticipated in August 2022*

## Statutory Requirements – Environmental

Air Quality

Biological Resources

Cultural and Historical Resources

Geology and Soils

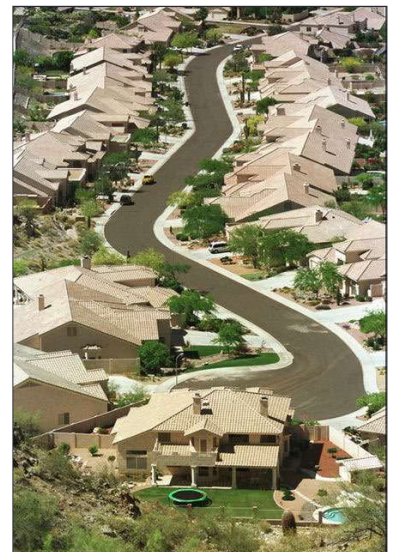
Hydrology

**Land Use**

Noise

Recreation

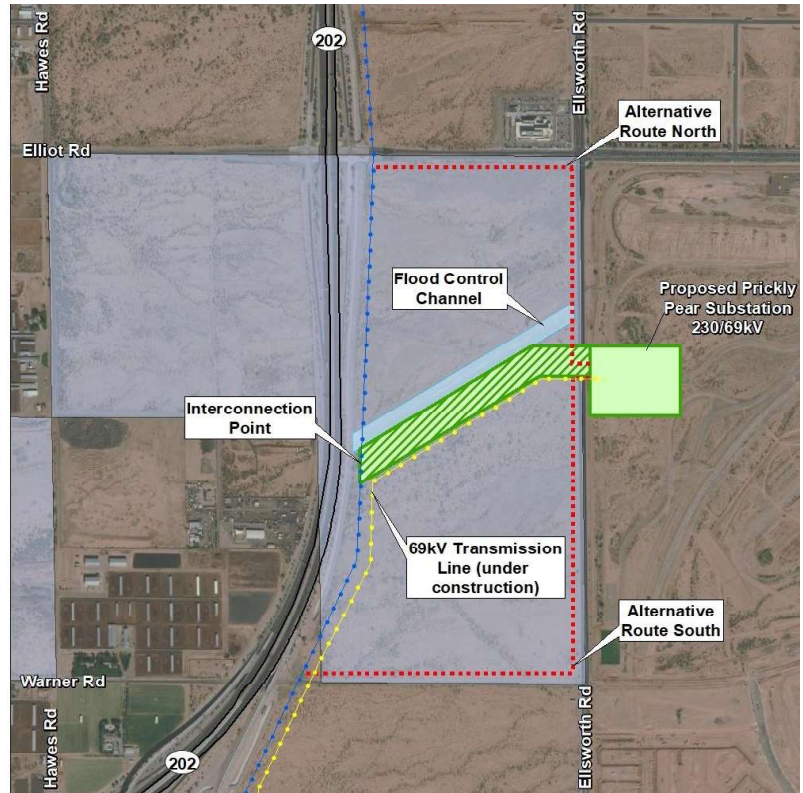
**Visual and Aesthetics**





# Route Selection

- Existing Flood Control Channel
- Shortest distance
- 230 kV line will parallel the 69 kV line
- Undeveloped State Trust Land
- Farther from residences





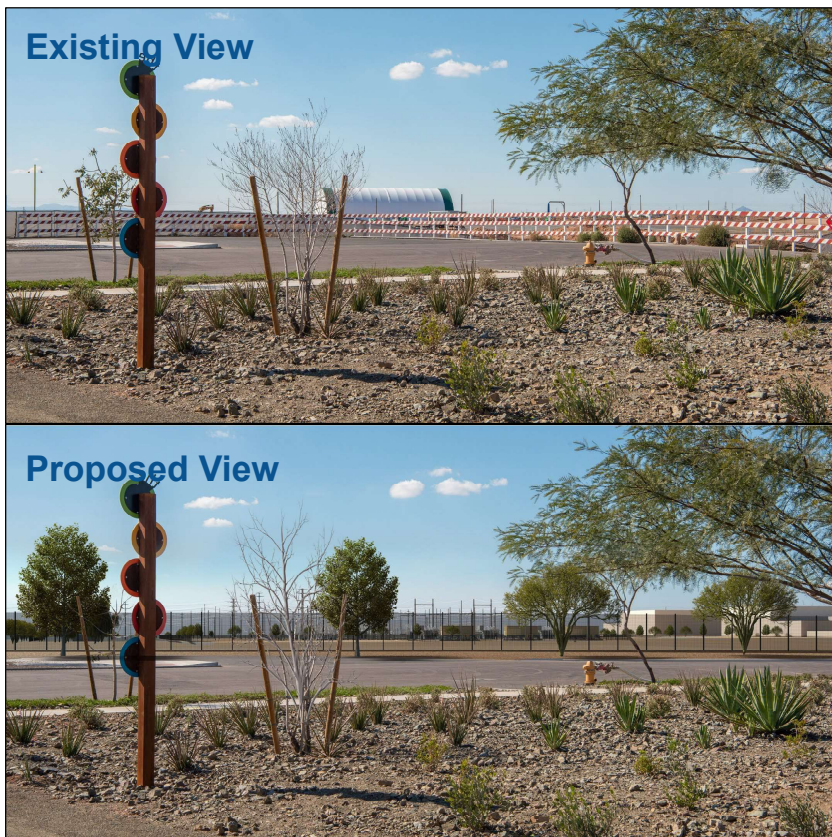
## KOP #1

- East Elliot Road & South Ellsworth Road  
– Looking South



## KOP #2

- North end of South Eastmark Parkway –  
Looking Northwest





## KOP #3

- Inspirian Parkway & East Point Twenty-Two Boulevard – Looking Northwest

Existing View



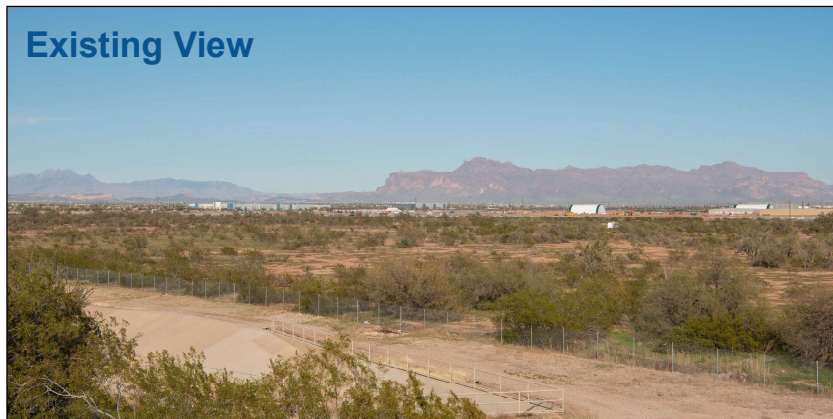
Proposed View



## KOP #4

- Highway 24 to I-202 Ramp – Looking Northeast

Existing View

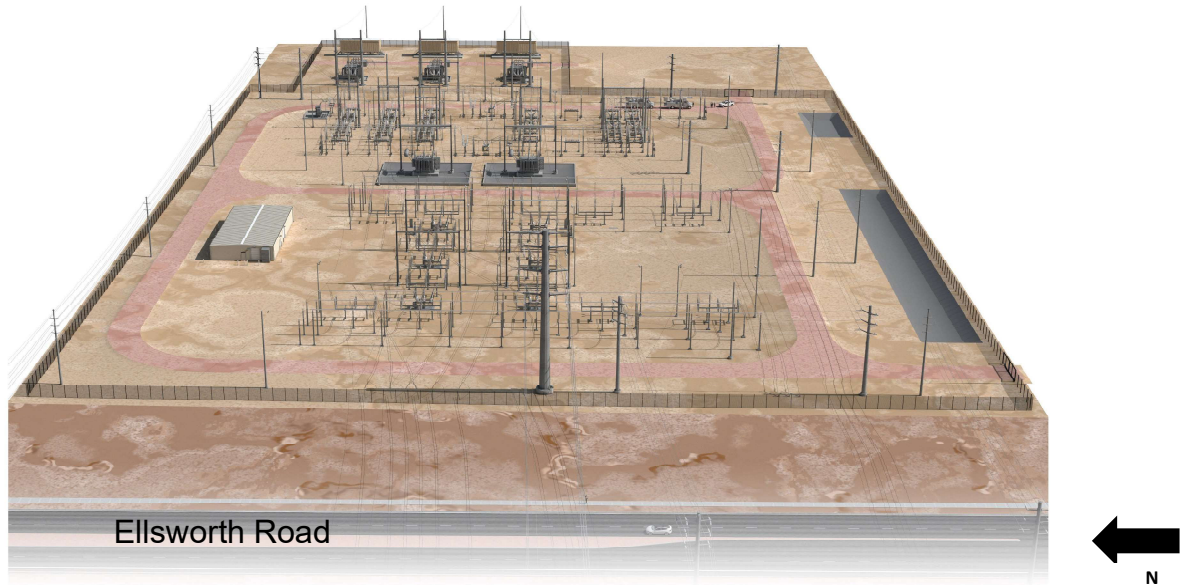


Proposed View



## KOP #5 – Rendering

- Bird's-eye view of a rendering from South Ellsworth Road – Looking East



## Comments

Project Information Line:  
(855) 584-1484

Project Website: [srp.net/Huckleberry](http://srp.net/Huckleberry)

# FACT SHEET PROJECT HUCKLEBERRY

On August 12, 2021, Meta announced a development plan for its Mesa Data Center in Mesa, Arizona. The Data Center site is located on a 389-acre private parcel of land at the southeast corner of Elliot Road and Ellsworth Road.

The Data Center is expected to create approximately 100 permanent high-tech, high-wage jobs and approximately 1,500 jobs during construction. The development represents a continuation of technology sector growth in Arizona, especially data center growth for which the Phoenix area recently ranked second nationally.

In order to provide necessary transmission capacity to serve the Mesa Data Center, SRP is proposing the Project Huckleberry 230 kilovolt (kV) Transmission Line Project (Project Huckleberry or Project).

**The Project includes the following components (see map on back):**

- **Proposed Double-Circuit 230 kV Transmission Line Corridor (0.5 mile)**
- **Proposed Prickly Pear 230 kV Substation**

SRP is preparing an application seeking a Certificate of Environmental Compatibility (CEC) to be filed with the Arizona Corporation Commission (ACC). The CEC process includes public hearings with the Arizona Power Plant and Transmission Line Siting Committee before seeking final approval from the ACC. Hearings before the Line Siting Committee will occur:

**Monday, June 27, 2022 at 1:00 p.m.**

*Continuing June 28-July 1, 2022 beginning at 9:00 a.m. each day (as needed).*

*There will be a Special Public Comment Session.*

The hearing will be located at:

**Delta Hotels by Marriott Phoenix Mesa  
200 N Centennial Way Mesa, AZ 85201**

To learn more about this Project or to comment with questions or feedback, please visit:

**[srp.net/huckleberry](http://srp.net/huckleberry)**

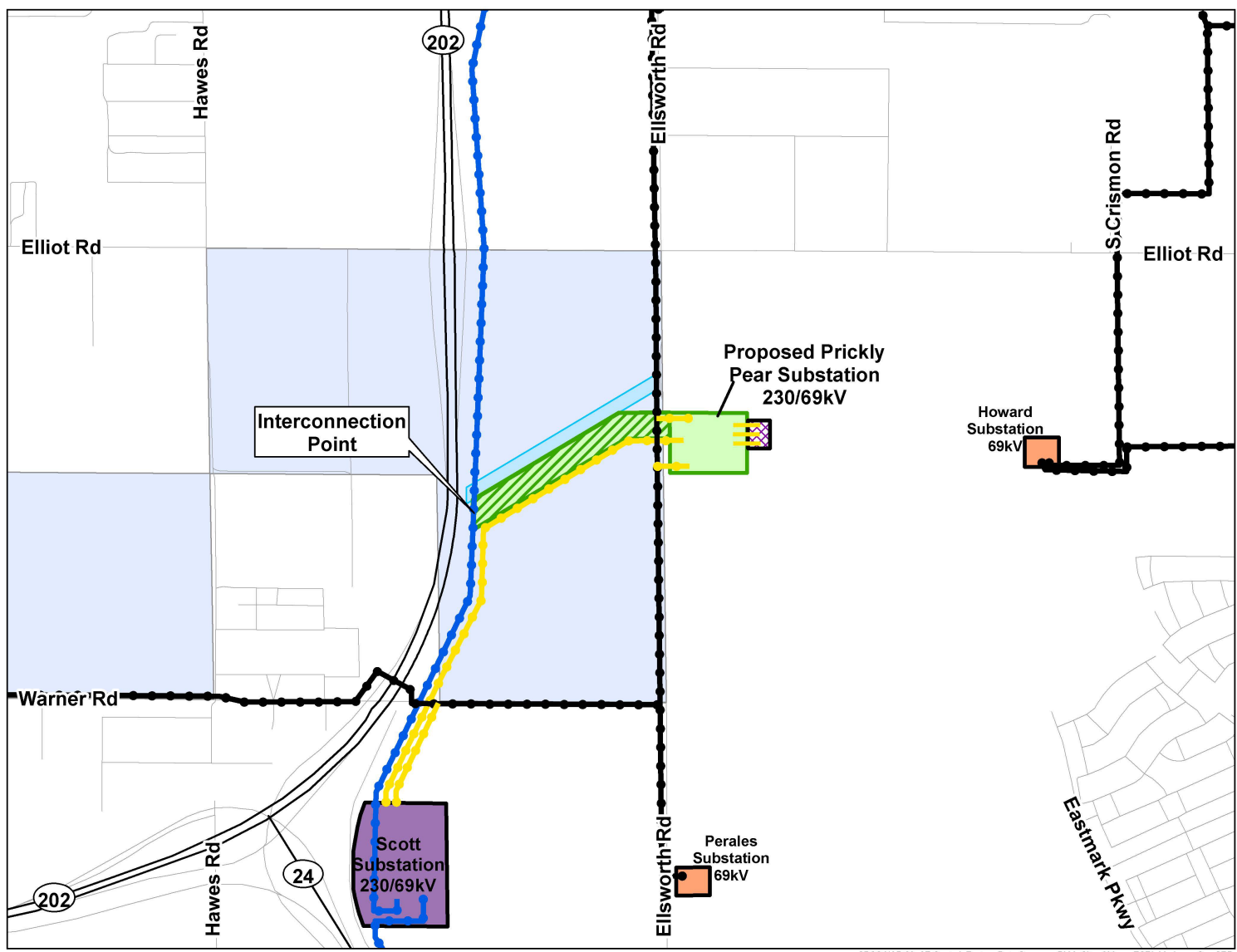
**or call**

**(855) 584-1484**

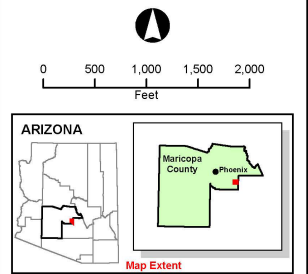
*Para obtener información en español sobre este proyecto, visite [srp.net/huckleberryESP](http://srp.net/huckleberryESP).*



Delivering water and power®



- LEGEND**
- Project Huckleberry Components**
- Proposed Double-Circuit 230kV Transmission Line Corridor
  - Proposed Prickly Pear 230/69kV Substation
- Other Components**
- Existing 69kV Transmission Line
  - Certificated Southeast Power Link 230kV Transmission Line
  - 69kV Transmission Line (under construction)
  - Customer-Dedicated 69kV Line (under construction)
  - State Highway
  - Road
  - Flood Control Channel
  - Existing Substation
  - Certificated Scott 230/69kV Substation
  - Customer-Owned 69/34.5kV Substation (under construction)
- Jurisdictional Land Ownership**
- State Land



**SNP**

**PROJECT HUCKLEBERRY  
PROJECT DETAILS**

Map Extent: City of Mesa, AZ

Date: 4.19.22 Author: ckvw



**EXHIBIT J-2**  
**PUBLIC AND STAKEHOLDER OUTREACH AND COMMENTS**

---

Date	Name	Interaction Type	Issue Category	Comments	SRP Response
5/6/2022	ACC STAFF	Briefing	Project Update		ACC staff project upate
5/6/2022	Justin Olson	Briefing	Project Update		Regulatory project project update
5/2/2022	Jonathan Arias	Phonecall outgoing	Project update		LM with project info, offered SRP to present at board meeting, notified of OH and was open to any questions
4/26/2022	Karen Brown	Web Site Comment	Emissions/ Solar	How much of this project is committed to solar, or reducing fossil fuel emissions? Thank you so much.	Emailed: Project Huckleberry components in which we are seeking a Certificate of environmental Compatibility (CEC) for, consist of constructing the proposed 230kV double-circuit transmission line and proposed 230kV Prickly Pear Substation. Neither of these electrical facilities would emit emissions. The purpose of Project Huckleberry is to build the necessary electrical infrastructure so that SRP can deliver reliable power to their data center. SRP works with all of our customers to meet their renewable energy goals. In a separate effort, Meta worked with SRP to secure 450 MW of new renewable energy on the local grid to meet their 100% renewable energy commitment. Meta has a website about the Mesa Data Center sustainability efforts which provides some additional information this topic ( <a href="https://datacenters.fb.com/wp-content/uploads/2021/12/Mesa.pdf">https://datacenters.fb.com/wp-content/uploads/2021/12/Mesa.pdf</a> ).
4/26/2022	Anna Tovar	Briefing	Project Update		Regulatory provided project update
4/26/2022	Lisa Bullington	Call Incoming	Project Updates	Asked for general info, open house, hearing dates.	Leslie with KPE spoke with caller. She is with Laveen Investments and wanted info on Open House, Hearing info. Provided her info and directed to SRP website. She may attend Open House but appeared satisfied with info provided.
4/13/2022	Jaqueline Parker	Email outgoing	Project Update		Jason Baron shared postcard update
4/13/2022	John Fillmore	Email outgoing	Project Update		Jason Baron shared postcard update
4/13/2022	Kelly Townsend	Email outgoing	Project Update		Jason Baron emailed latest postcard update
4/1/2022	Thomas Gavin	Email outgoing	Postcard shared		Patricia sent postcard, provided a project overview via email and provided Open House details on May 3rd.
3/30/2022	Rick Morris	Call Incoming	Employment	Voicemail left regarding employment	Leslie McFadden left voicemail with schedule and timeline but the box was full.
3/28/2022	Sally Harrison	Email Outgoing	Postcard shared		Postcard was shared with Sally to keep her posted on the project.
3/28/2022	Michael Nott	Call Incoming	Procurement	Had procurement questions on materials and supplies	Leslie with KPE provided timeline, schedule and directed to website for update.
3/24/2022	Bryant Powell	Email outgoing	Postcard shared		Postcard was shared with Bryant to keep him posted on the project.

3/24/2022	John Kross	Email outgoing	Postcard shared		Postcard was shared with John to keep him posted on the project.
3/24/2022	Vince Condrath	Email Incoming	Employment	Will the following be posted to the website: PPT presentation, Vignettes Announcement of in-person open house Will SRP use a bid process for any part of the project	Yes, vignettes and presentation will be posted to the website SRP will send another mailer and it will be posted to the website to notice of the in-person OH Understand you spoke with engineering on the bid process for this project but have forwarded your previous questions to them.
3/21/2022	Amanda's Care Home	Phone call outgoing	Project update		Left message with project info, SRP website and open house invite
3/21/2022	Arizona Premier	Phone call outgoing	Project update		Verified contact info for future email update
3/21/2022	Kathleen Celso	Phone call outgoing	Project update		Left message with project info and open house coming up details
3/21/2022	Wendy Wayne	Call Incoming	Rate Increase	Left message requesting call back	Asked if there would be a rate increase. No rate increase associated with this project as Meta is incurring the cost.
3/18/2022	Jim Lamb	Phone call outgoing	Project update		Left with assistant with info, invite to OH, offered to send postcard
3/18/2022	Jocelyn Aley	Phone call outgoing	Project update		Left project info, invited to OH and offered postcard again.
3/18/2022	Lisa Bushnick	Phone call outgoing	Project update		Left a message with project info, offered to send postcard again.
3/18/2022	Lori Wiemers	Phone call outgoing	Project Update		Left a message for Lori and Marla Sloan on project, invited to OH and asked if they received postcard email.
3/18/2022	Monica Garza	Phone call outgoing	Project Update		Spoke with Monica, sending her email with postcard and invited her the OH
3/18/2022	Church Outreach	Phone call outgoing			Verified contact info on 2/21 and called on 3/18 with project information, and invited to OH Included the following churches:  The Church of Jesus Christ of Latter Day Saints (3 different addresses)  The Church of Jesus Christ of Latter Day Saints (Point Twenty Two, left message, was unable to reach)  Living Stone Community Church  Paloma Community Church  Sun Valley Community Church
3/18/2022	Richard No Last name	Phone call outgoing	Project update		Left message with admin desk, provided website, invited to OH

3/18/2022	Shane White	Phone call outgoing	Project Update		Spoke with Shane, reviewed project mentioned OH and also sent him the postcard via email again.
3/18/2022	Stacey White	Phone call outgoing	Project Update		Left project info with Tasha as Stacey was out. Invited to OH next week and offered to send postcard via email.
3/18/2022	Tyler Williams	Phone call outgoing	Project update		Left a message and invited to OH, offered to send postcard via email.
3/17/2022	William Blankemeier	Email outgoing	Shared postcard/reviewed OH/offered meeting	States he is the asst. to the prop manager but will send it their way.	New property manager assigned. Left Message, but will also email him postcard and project descriptions, OH info and offer for presentation by SRP. Full email is in attachments.
3/17/2022	Millie Lawton	Email outgoing	Shared postcard/reviewed OH/offered meeting	She appreciated the info and will forward to her board members about if they want to post this on Village Connection.	I spoke with Millie today and reviewed project info, discussed open house coming up and registration on the website. I then emailed her the latest postcard at her request. Email is in attachments.
3/17/2022	Candy Mejia	Phone call outgoing	Project update		Left message with project info.
3/17/2022	Careena Daly	Phone call outgoing	Project update		Left a message with assistant who will share that I called. Spoke with Jillian (new property manager) reviewed project, sending postcard via email, reminded of OH, but there are no residents until April 1st.
3/17/2022	Kenneth Wells	Phone call outgoing	Project update		Left message with project info, offered SRP to present at board meeting, notified of OH, and any questions. Did not recall seeing postcard, so I emailed it to him today.
3/17/2022	Kristen Hemmele	Phonecall Outgoing	Project Update		Left message with info
3/17/2022	Marc Vasquez	Phone call outgoing	Project update		Tried calling several times, left message with project info.
3/16/2022	Rich Ogden	Phone call outgoing	Shared project information/any questions/invite to OH	Just took over managing Eastridge on March 1st, 2022, just before postcard was mailed. Appreciate info and will share with board.	Sam called to share project information. Emailed his postcard, talked to him about the upcoming open house and offered for SRP to present following the OH if requested.
3/16/2022	Tracy Carter	Phone call outgoing	Project update		Asked if they received postcard/email, asked they had any questions, reminded of OH, asked to share project info with community, emailed postcard info to him again.
3/16/2022	Ashley Saucedo	Phone call outgoing	Project update		LM with project info, offered SRP to present at board meeting, notified of OH, was open to any questions.  Tried calling on 3/22 again, voicemail full, called later that day and left a message
3/16/2022	Bailee ?	Email outgoing	Project Update		Spoke with Bailee, postcard mailed and email sent to her, offered presentation by SRP following OH events and if she would share information with board.
3/16/2022	Chris Donahue	Phone call outgoing	Project Update		LM with info, offered SRP be present at board meeting, notified of OH, asked if they had any questions.



3/16/2022	Sarah Maddox	Phone call outgoing	Project update		Sam spoke with Sarah, she asked for me to send the postcard via email. Notified her of virtual OH and upcoming in person OH. Offered to present at HOA board if requested.
3/16/2022	Sonia Harris	Phone call outgoing	Project update		New property manager, left message but also emailed postcard and project descriptions, OH info and offered presentation by SRP
3/15/2022	Heather Brunick	Phone call outgoing	Project update		Left message with admin desk, provided website, invited to OH
3/11/2022	Dean Weitenhagen	Email Incoming	Water usage	Will SRP be providing water for the cooling needs of this project? If not, who might I contact regarding their planned usage?	From what I understand, SRP is only supplying the necessary infrastructure required to serve Meta's electrical load. There are no specifics on water usage regarding the Meta Data Center, so perhaps the City of Mesa would have more information.  You can find more information on Project Huckleberry link – SRP here.
3/10/2022	Harvey Wheatenhagen	Phone call incoming	Water usage	Hi. He called at 11:20 and I just retrieved the voicemail. He requested to not call him back until I have the info he requested. I have not called him back. He said he lives on East Terra Drive in Scottsdale and just read about the Project. He wants to know what is the water usage is going to be daily, weekly and monthly for this Project. He can be reached at 515-988-8761.	We are only supplying the necessary infrastructure required to serve Meta's electrical load and don't have specifics on water usage regarding the Mesa Data Center.
3/8/2022	Tom Oberti	Call Incoming	Job interest	Left a message about job procurement and who was awarding engineering contract	Left voicemail for caller directing him to website and informing him that were are still in permitting phase.
3/3/2022	Thomas Gavin	Email outgoing	Briefing		Shared announcement postcard and provided by project background.
3/2/2022	ACC STAFF	Briefing	Initial project briefing		Regulatory Policy briefed Commissioner O'Connor
3/2/2022	Jim O'Connor	Briefing	Initial project briefing		
3/1/2022	Anna Tovar	Briefing	Initial project briefing		
3/1/2022	Justin Olson	Briefing	Initial project briefing		
3/1/2022	Sandra Kennedy	Briefing	Initial project briefing		

2/28/2022	Lea Marquez-Peterson	Briefing	Initial project briefing		
2/25/2022	Shane White	Phone call outgoing	Verified contact info		Verified contact info on 2/22- left a message Verified contact info for future email notification, spoke with someone on 2/25/22
2/24/2022	Monica Garza	Phone call outgoing	Project Update		Spoke with Monica, sending her email with postcard and invited her to OH
2/23/2022	Alicia White	Briefing	Emailed project announcement postcard		L. Brady emailed project announcement postcard
2/23/2022	Bryant Powell	Email outgoing	Postcard Announcement shared		Hilen Cruz shared the project announcement postcard with Bryant Powell.
2/23/2022	Chris Brady	Briefing	Project announcement post card		L. Brady emailed project announcement postcard
2/23/2022	John Giles	Briefing	Project announcement post card		L. Brady emailed project announcement postcard
2/23/2022	John Kross	Email outgoing	Postcard Announcement shared		Hilen Cruz shared project announcement postcard with John Kross
2/23/2022	Kevin Thompson	Briefing	Project announcement post card		L. Brady emailed project announcement postcard
2/23/2022	Melissa Randanzo	Briefing	Project announcement post card		L. Brady emailed project announcement postcard
2/23/2022	Scott Butler	Briefing	Project announcement post card		L. Brady emailed project announcement postcard
2/23/2022	Tyler Williams	Phone call outgoing	Verified contact info		Verified contact info for further email updates
2/22/2022	Amanda's Care Home	Phone call outgoing	Verified contact info		Verified contact info for future email update
2/22/2022	Arizona Premier	Phone call outgoing	Verified contact info		Verified contact info for future email update
2/22/2022	Assisted Living	Phone call outgoing	Verified contact info	Called: Spring Assisted Living LLC Arizona Premier Adult Care Twilight Haven Assisted Living Amanda's Care Home- phone disconnected Ideal Assisted Living--Closed	Verified contact info for email notification
2/22/2022	Kathleen Celso	Phone call outgoing	Verified contact info		Verified contact info for future email update

				Called: The Church of Jesus Christ of Latter Day Saints on: Signal Butte South Hawes Point Twenty-two Blvd (2)  Sun Valley Community Church-Ellsworth Rd  Paloma Community Church- Sossaman Blvd  Living Stone Community Church- Ray Rd	
2/21/2022	Church Contacts	Phone call Outgoing	Verified contact info	Focus 314-Eastmark Pkwy	Called to verify information for future email notification
2/15/2022	Heather ?	Phone call outgoing	Verified contact info		Verified contact info for future email notifications
2/15/2022	Heather Brunick	Phone call outgoing	Verified contact info		Verified contact info for future project email
2/15/2022	Jim Lamb	Phone call outgoing	Verified contact info		Verified contact info for future email updates.
2/15/2022	Jocelyn Aley	Phone call outgoing	Verified contact info		
2/15/2022	Lisa Bushnick	Phone call outgoing	Verified contact info		Verified contact info for future email updates
2/15/2022	Lori Wiemers	Phone call outgoing	Verified contact info		Verified information for email notification
2/15/2022	Marc Vasquez	Phone call outgoing	Verified contact info		Verified information for email notification on 2/15 and 2/24 reached them.
2/15/2022	No Name	Phone call outgoing	Verified contact info		Verifying info for future email notifications
2/15/2022	Richard ?	Phone call outgoing	Verified contact info		Verifying information for email notification.
2/15/2022	Richard No Last name	Phone call outgoing	Verified contact info		Verified contact info for future project update
2/15/2022	Stacey White	Phone call outgoing	Verified contact info		Verified contact info for future email updates.
2/14/2022		Phone call outgoing	Verified contact info		Verified email to include in email notifications
2/14/2022		Phone call outgoing	Verified contact info		Verified email to include in email notifications
2/14/2022		Phone call outgoing	Verified contact info		Verified email to include in email notifications
2/14/2022	Ashley Saucedo	Phone call outgoing	Verified contact info		Verified contact info for email notification
2/14/2022	Bailee ?	Phone call outgoing	Verified contact info		Verified contact info for email notification
2/14/2022	Candy Mejia	Phone call outgoing	Verified contact info		Verified information for email notification
2/14/2022	Careena Daly	Phone call outgoing	Verified contact info	Under construction 9410 E Cadence Parkway No formal HOA set up, will be Cavallo at Cadence future property, leasing soon, Careena is currently manager	Verified contact info for email notification
2/14/2022	Chris Donahue	Phone call outgoing	Verified contact info		Verified contact info for email notification
2/14/2022	Emily Ottens	Phone call outgoing	Verified contact info		Verified contact info for email notification
2/14/2022	Jonathan Arias	Phone call outgoing	Verified contact info		Verified contact info for email notification

2/14/2022	Jonathan Zorich	Phone call outgoing	Verified contact info		Verified contact info for email notification.
2/14/2022	Kenneth Wells	Phone call outgoing	Verified contact info		Verified contact info for email notification
2/14/2022	Kristen Hemmele	Phone call outgoing	Verified contact info		Verified information for email notification
2/14/2022	Mike Gerson	Phone call outgoing	Verify contact info		Verified contact info for email notification
				Manages both Arizona Skyline Community and Sonoran Springs Owners Association	
2/14/2022	Millie Lawton	Phone call outgoing	Verified contact info		Verified contact info for email notification
2/14/2022	Millie Lawton	Phone call outgoing	Verified contact info		Verified contact info for email notification
2/14/2022	Sarah Maddox	Phone call outgoing	Verified contact info		Verified contact info for email notification
2/14/2022	Tanya ?	Phone call outgoing	Verified contact info		Verified contact info for email notification.
2/14/2022	Tracy Carter	Phone call outgoing	Verified contact info		Verified contact info for email notification



**Project Huckleberry  
On-Line Open House  
Questions Submitted through On-Line Portal**

Question Submitted on 3/22/22	
How much interest did Meta or other stakeholders express in underground construction and what did any SRP/Meta evaluation conclude?	
How much generation is planned?	
Does SRP intend to self-perform all follow-on Engineering, Design and Construction Mgmt?	
Will SRP be using a Project Mgmt firm or Owner's Engineer?	
Progress is great but adding overhead power line eyesores to the neighborhood is NOT a positive. Was any investigation done about underground options?	
The name Project Huckleberry sounds very nice but let's face it, this project is going to be an eyesore for this Eastmark community. It will also likely affect property values. The renderings shared appear to barely address the visual effect.	
Define key stakeholders who were consulted on underground? Were any local homeowners considered? While it may not be viewed as necessary to an 'outsider' the viewpoint changes when you are directly impacted.	

**Project Huckleberry  
On-Line Open House  
Questions Submitted through On-Line Portal**

Is there a possibility to largely improve the visual impact?

An article in the Tribune says "To power its almost 1 million-square-foot future facility, Meta has signed deals to purchase 450 megawatts of new solar energy from SRP. The energy company is contracting to build three solar plants in Pinal County, totaling 500 megawatts, to deliver the needed solar power."

Kevin's statement about serving from existing resources seems to conflict with this. Which is correct?

What is the size of the new data center?

I understand how it's early in the process and you mentioned homeowner input would be considered as stakeholders later on. However, when you've already made decisions on things like underground lines would not be an option, it does feel like we will be told it's too late for our concerns.

This needs to be underground and the visual impacts need to be far improved from the renderings. What will it take for SRP to do this?

FYI - Meta Data Center is ~950,000 SF. Not 950,000,000 SF.

Can the time and date and place of the Physical Open House please be repeated? Thank you.

**Project Huckleberry  
On-Line Open House  
Questions Submitted through On-Line Portal**

Is this entire presentation available?

Will the discussion also be part of what is posted?

**Question Submitted on 3/23/22**

I came in late, but why not put this in the more commercial area vs. the more residential side? How unsightly, how visible with this be along Ellsworth and where poles and lines are, and what is the health impact if any?

When you say best location with flood zone, etc., best location for SRP or best location for residents? Was input obtained, focus groups, etc.?

Understood - I was also looking at location of the substation. Which you said has to be there

I want the beauty of the area preserved. Through all the commercial industrial development. Thanks.