

EXHIBIT F RECREATIONAL PURPOSES AND ASPECTS

In accordance with Arizona Administrative Code R14-3-219, the Applicant provides the following information:

State the extent, if any, the proposed site or route will be available to the public for recreational purposes, consistent with safety considerations and regulations, and attach any plans the Applicant may have concerning the development of the recreational aspects of the proposed site or route.

Existing Conditions

Regional recreation information near the proposed Project Huckleberry 230 kilovolt (kV) Transmission Line Project (Project Huckleberry or Project) and for the region and surrounding areas was gathered from Maricopa County and the City of Mesa, Arizona. Regionally, Maricopa County has a diverse geography which offers a multitude of recreational opportunities. The terrain within the large county ranges from the broad, sloping alluvial plain south of the Phoenix metropolitan area to rugged mountain formations within areas of the southern portion of the county, like the Sonoran Desert National Monument, and in the eastern portion of the county within the Tonto National Forest. Within the large area encompassed by Maricopa County, there also exists regional and local parks associated with various mountain ranges such as the Estrella Mountains, South Mountains, Phoenix Mountains, McDowell Mountains, Userly Mountain, and the Santan Mountains.

The recreational activities more specific to the Project area range from developed activities in mixed use areas such as organized sports areas, designated open spaces in subdivisions, and community parks, in addition to dispersed, undeveloped activities on private lands.

The majority of recreational areas within close proximity of the Project segments are passive open spaces or neighborhood-type parks, associated with subdivisions, that include catchment basins and common areas.

As discussed in **Exhibit A** (Land Use) and depicted on **Figure A-2**, the land to be used for Project Huckleberry is on a combination of Arizona State Trust Land managed by Arizona State Land Department (ASLD or State Land) and privately owned land. The proposed Prickly Pear 230 kV Substation is proposed to be located on privately held land owned by Meta's Mesa Data Center (Data Center). The proposed 230 kV transmission line is proposed to be located on Arizona State Trust Land.

Proposed Prickly Pear 230 kV Substation

There are no designated recreational areas or open space/park lands within 1,000 feet of the proposed Prickly Pear 230 kV Substation (see **Figure F-1**). An open space/park area located north and east of Eastmark Parkway is the closest recreational area to the proposed Prickly Pear 230 kV Substation, just outside the 1,000-foot buffer. The closest active recreational facilities are sports fields associated with the Eastmark Great Park. They are located south of Point Twenty-Two Boulevard but not within the 1,000-foot buffer.

Proposed 230 kV Transmission Line

There are no designated recreational areas or open space/park lands within 1,000 feet of the proposed 230 kV transmission line (see **Figure F-1**). An open space/park area located north and east of Eastmark Parkway is the closest recreational area to the proposed 230 kV transmission line, just outside the 1,000-foot buffer. The closest active recreational facilities are sports fields associated with the Eastmark Great Park. They are located south of Point Twenty-Two Boulevard but not within the 1,000-foot buffer.

Potential Effects

The Project components will not be available for public recreation purposes, but the Project will not preclude recreational uses in the area around the Project components.

Salt River Project Agricultural Improvement and Power District (SRP) will work with the City of Mesa during the construction phase to ensure compliance with the City of Mesa's General Plan and the residential open space and neighborhood parks.

References

City of Mesa, 2014. Mesa 2040 General Plan [Online] Located at:

<https://www.mesaaz.gov/business/development-services/planning/long-range-planning>

City of Mesa, 2021. Planning and Zoning GIS Home Page [Online] Located at:

<https://opengis.mesaaz.gov/apps/planning-and-zoning/explore>

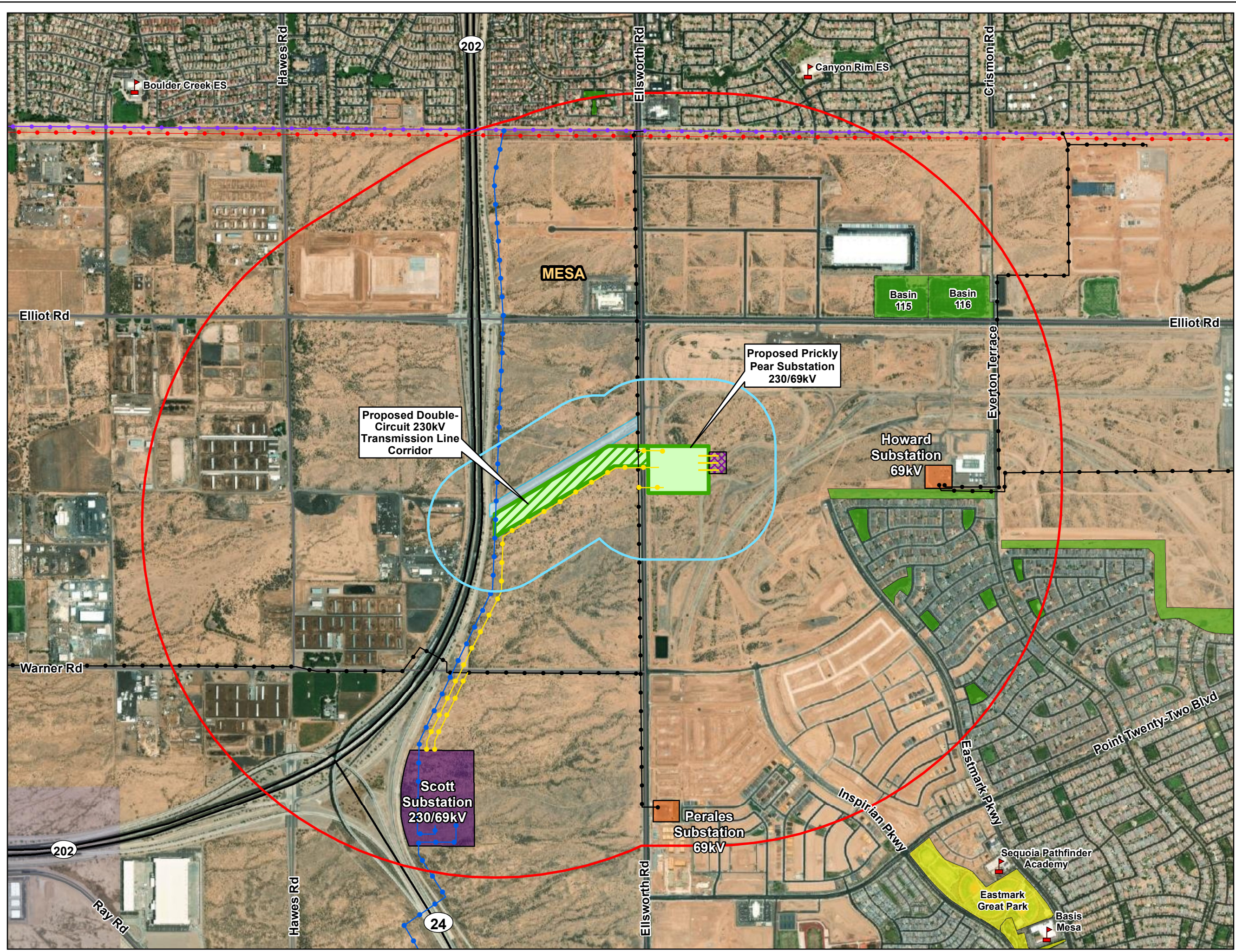
City of Mesa, 2022. Park Open Spaces and Basins.

<https://www.mesaparks.com/parks-facilities/parks/park-open-spaces-and-basins>

County of Maricopa, 2016. Comprehensive Plan, Vision 2030. Revised August 2002 [Online] Located at:

<http://www.maricopa.gov/planning/Resources/Plans/ComprehensivePlan>

County of Maricopa, 2021. Maricopa County Planning and Development Department GIS Home Page, titled PlanNet. [Online] Located at: <https://gis.maricopa.gov/PND/PlanNet/index.html>



Legend

Project Huckleberry Components

Proposed Double-Circuit 230kV Transmission Line Corridor

Proposed Prickly Pear 230/69kV Substation

1,000-Foot Buffer of Project Site

1-Mile Buffer of Project Site

Other Components

Existing 500kV Transmission Line

Existing 230kV Transmission Line with 69kV Underbuild

Existing 69kV Transmission Line

Certificated Southeast Power Link 230kV Transmission Line

69kV Transmission Line (under construction)

Customer-Dedicated 69kV Line (under construction)

State Highway

Major Road

Flood Control Channel

Existing Substation

Certificated Scott 230/69kV Substation

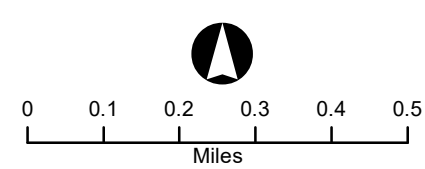
Customer-Owned 69/34.5kV Substation (under construction)

School

Recreation

Open Space/Park

Recreational Facility



PROJECT HUCKLEBERRY
FIGURE F-1 RECREATION

Map Extent: Maricopa County, AZ

Date: 3.7.22

Author: ckvw