

EXHIBIT E

SCENIC AREAS, HISTORIC SITES AND STRUCTURES, ARCHAEOLOGICAL SITES

In accordance with Arizona Administrative Code R14-3-219, the Applicant provides the following information:

Describe any existing scenic areas, historic sites and structures or archaeological sites in the vicinity of the proposed facilities and state the effects, if any, the proposed facilities will have thereon.

VISUAL RESOURCES

Sensitive Viewpoints

Sensitive viewpoints consist of locations from which a significant number of individuals having some regard for the integrity of visual resources would view a landscape and be exposed to the presence of the Salt River Project Agricultural Improvement and Power District (SRP) proposed Project Huckleberry 230 kilovolt (kV) Transmission Line Project (Project Huckleberry or Project). There are no designated scenic areas within the Project area. Potential sensitive viewpoints in the Project area occur along transportation corridors within proximity of vacant, industrial, agricultural, and residential land uses from residential land uses and sensitive receptors where the Project could be seen.

Viewer sensitivity is based on the importance of features, conditions that affect visual perception, and social factors that contribute to view perception. The levels of sensitivity are generally classified as low, moderate, or high depending on viewer types and exposure, view orientation and duration, and viewer awareness or sensitivity to visual changes.

Visual quality is the visual pattern created by the combination of natural character landscapes and industrial and artificial features. Visual quality is typically evaluated using the following descriptions:

- Natural – the landscape exhibits distinctive and memorable natural visual features (landforms, rock outcrops, etc.) and patterns (vegetation/open space) that are largely undisturbed, usually a rural or open space setting. Few human-made developments or disturbances are present.
- Rural – the landscape consists of natural and human-made features/patterns, often the result of altering the landscape for farming or mineral extraction. These areas may not be visually distinct or unusual in the region.
- Mixed Residential and Commercial – the landscape is primarily human-made and affected by elements common to the built environment of mixed residential and commercial, and industrial areas. Human elements are prevalent or landscape modifications exist which do not compatibly blend with the natural surroundings.

Existing Conditions

Four representative key viewpoints, or Key Observation Points (KOPs), were selected within the Project area to depict the existing visual quality. The KOPs were selected based on viewers viewing the Project from the closest sensitive receptor (medical facility), closest residential area, closest recreational facility, and along nearby major transportation corridors. Photos were taken during field reconnaissance from March 2022 through April 2022. The locations of the KOPs and simulations are included in figures at the end of this section. **Figure E-1** depicts a map with the locations of the four KOPs. The existing conditions and the potential visual effects of the proposed Project components are shown for the KOPs on **Figures E-2 through E-5**.

KOP 1 (Figure E-2) East Elliot Road and South Ellsworth Road

KOP 1 was taken from the northwest corner of East Elliot Road and South Ellsworth Road looking south down South Ellsworth Road. KOP 1 represents the view from the closest sensitive receptor to the Project, which is the Dignity Health – Arizona General Hospital Mesa. The existing view shows the intersection and traffic light in the foreground, existing transmission lines in the foreground and middle ground, and Meta’s Mesa Data Center (Data Center) property in the middle ground. Mountains are visible in the distant background. The visual quality is classified as vacant, commercial, and mixed residential with vacant and industrial land uses dominating the area.

KOP 2 (Figure E-3) North End of South Eastmark Parkway

KOP 2 was taken from South Eastmark Parkway looking northwest towards the Data Center property from inside the Eastmark community. KOP 2 represents the view from the closest residential area to the Project. The view shows the north end of South Eastmark Parkway and ornamental vegetation in the foreground, as well as the construction of the Data Center and an existing 69 kV transmission line in the middle ground. The visual quality of the view is classified as mixed use and industrial in character.

KOP 3 (Figure E-4) Inspirian Parkway and East Point Twenty-Two Boulevard

KOP 3 was taken from Inspirian Parkway looking northwest towards Point Twenty-Two Boulevard. KOP 3 represents the view from the closest recreational facility to the Project, the Eastmark Great Park. The Eastmark Great Park is a large public park with a playground and sports fields located adjacent to the Basis Charter School. The existing view shows the intersection of Inspirian Parkway and Point Twenty-Two Boulevard and traffic lights in the foreground, as well as existing residential development in the middle ground. Mountains are visible in the distant background to the north. The visual quality is classified as rural and mixed residential and commercial.

KOP 4 (Figure E-5) State Route (SR) 24 to Loop 202 Ramp

KOP 4 was taken from the SR 24 ramp onto Loop 202 looking northeast. KOP 4 represents the view from a nearby major transportation corridor to the Project. The existing view includes water conveyance infrastructure and vacant ground visible in the foreground, and a mixture of vacant

ground and disturbed habitat is visible in the middle ground as well as an existing 69 kV transmission line. Existing industrial and commercial development is visible in the background, and mountains are visible in the distant background. The visual quality is classified as mixed residential and commercial in character.

Potential Effects

Potential effects to visual resources relate to changes in available views of the landscape and the effects of those changes on viewers. Potential effects were evaluated based on a combination of contrasts between levels of visual quality and the levels of viewer sensitivity.

Visual resources would be affected by introducing the proposed 230 kV structures and the proposed Prickly Pear 230 kV Substation into the existing visual landscape. The structures associated with the Project introduce straight, vertical lines and color contrast under certain lighting conditions. The effects of introducing these elements into the landscape would be apparent when viewed from sensitive viewpoints. The Project would introduce new elements into the landscape; however, they would not appreciably alter the existing form, line, color, and texture which characterize the existing landscape and are consistent with the existing infrastructure in the area.

Visual effects associated with each of the KOPs are described below and shown in **Figures E-2** through **E-5** (visual simulations). These simulations show the views from the KOPs after construction of the Project.

KOP 1 (Figure E-2) East Elliot Road and South Ellsworth Road

KOP 1 was taken from the northwest corner of East Elliot Road and South Ellsworth Road looking south down South Ellsworth Road. This simulation represents the view from the closest sensitive receptor to the Project, which is the Dignity Health – Arizona General Hospital Mesa. The proposed view shows the intersection in the foreground, existing transmission lines and the proposed Data Center in the middle ground. The proposed landscaping and Data Center buildings have been simulated based on the Data Center plans. The City of Mesa approved the site plan for the Data Center on March 24, 2021, which included the development of a large commercial/industrial campus. The simulation depicts the landscaping of trees and shrub vegetation, fencing, and the proposed buildings in the middle and background. The proposed 230 kV transmission line is visible in the middle and background, and the top of the proposed Prickly Pear 230 kV Substation is shown in the middle ground. While the Project introduces proposed 230 kV structures into the viewshed, it would not substantially alter the visual landscape due to the presence of existing transmission lines and the Data Center.

KOP 2 (Figure E-3) North End of South Eastmark Parkway

KOP 2 was taken from South Eastmark Parkway looking northwest towards the Data Center from inside the Eastmark community. This simulation represents the view from the closest residential area to the Project. The proposed view shows the Data Center in the middle ground, the fence line in the middle ground, and the ornamental landscaping around the Data Center in the middle

ground. In the background, the proposed 230 kV transmission line and the proposed Prickly Pear 230 kV Substation structures are visible. The Project would introduce proposed structures into the viewshed from this KOP, but they would be consistent with the existing development and land use in the area.

KOP 3 (Figure E-4) Inspirian Parkway and East Point Twenty-Two Boulevard

KOP 3 was taken from Inspirian Parkway looking northwest towards Point Twenty-Two Boulevard. This simulation represents the view from the closest recreational facility to the Project, the Eastmark Great Park. The proposed view will not change from the existing view in the foreground and middle ground. The intersection of Inspirian Parkway and Point Twenty-Two Boulevard and traffic lights are visible in the foreground. The existing residential development and the Data Center construction are shown in the middle ground. The Project will introduce proposed 230 kV structures and transmission conductor that could be visible in the background from KOP 3; however, these proposed structures will not substantially alter the characteristics of the existing visual landscape.

KOP 4 (Figure E-5) SR 24 to Loop 202 Ramp

KOP 4 was taken from the SR 24 ramp onto Loop 202 looking northeast. This simulation represents the view from a nearby major transportation corridor to the Project. The proposed view shows 230 kV structures in the foreground and middle ground. These structures are the proposed structures that have been approved and certificated by the Arizona Corporation Commission (ACC) and are part of the Southeast Power Link Project (SPL). The middle ground and background include the proposed Prickly Pear 230 kV Substation and the proposed 230 kV transmission line. The Project would introduce proposed structures to the visual landscape; however, from this view they are consistent with the approved SPL transmission lines and would not substantially alter the visual landscape due to the presence of those existing SPL transmission structures. In addition, the primary viewers from this KOP would be motorists along SR 24 and Loop 202 traveling at relatively high speeds; therefore, viewer exposure would be low.

HISTORIC AND ARCHAEOLOGICAL RESOURCES

Management Summary

Much of the Project has been recently subject to Class III Cultural Resources Survey prior to submission of this Application as part of SRP's 2021 application for a 230 kV transmission line right-of-way (ROW) from the Arizona State Land Department (ASLD or State Land) (application 14-122057-00-100). At that time, SRP retained North Wind Resource Consulting to complete the intensive pedestrian cultural resource survey and draft the Class III Cultural Resources Survey report (Peters, 2021). No significant cultural resources were identified during the survey. **Exhibit E-1** includes the public version of the Class III Cultural Resources Survey report prepared for SRP.

Other portions of the Project were subject to a Class III Cultural Resources Survey sponsored by a third party. This includes a Cultural Resources Memorandum prepared by AECOM for the

owner of the proposed Prickly Pear 230 kV Substation site (Rogge, 2021). No significant cultural resources were identified. The Cultural Resources Memorandum is marked confidential and has not been included in **Exhibit E-1** but has been summarized below.

No archaeological sites or historic buildings or structures were identified during either survey. Accordingly, a finding of “no historic properties affected” is appropriate for the proposed 230 kV transmission line and the proposed Prickly Pear 230 kV Substation.

Cultural Context

The following cultural context was adapted from a Cultural Resources Survey report prepared in March 2022 by Paleowest, LLC for the adjacent SRP Southeast Power Link Project (Steber and Deats, 2022).

Hohokam Tradition

The best documented and most common archaeological remains in the Phoenix Basin are attributed to the Hohokam cultural tradition. The modern Akimel O’Odham, with nearby populations represented by the Gila River and Salt River Pima-Maricopa Indian Community, are the descendants of this ancient tradition. Researchers generally delineate Hohokam culture history into a series of subperiods, which are briefly outlined below.

Early Formative Period (A.D. 1-450) – The Early Formative Period, also known as the Red Mountain Phase in the Phoenix Basin, appears to be a continuation of the developments that took place during the Late Archaic/Early Agricultural Period, with a gradual shift to permanent architecture and more permanent settlements. Data from archaeological sites such as Pueblo Patricio and Finch Camp indicate that people lived in small hamlets composed of groups of pit houses, many of which included flexed inhumation human burials under house floors.

Pioneer Period (A.D. 450-750) – The Pioneer Period encompasses the Vahki, Estrella, Sweetwater, and Snaketown Phases in the Phoenix Basin. With the introduction of irrigation canals, which were constructed on alluvial terraces above the Phoenix floodplain, large areas of the Phoenix Basin were under cultivation by at least the Snaketown Phase of the Pioneer Period. Painted pottery was developed by the Vahki Phase; the Snaketown Red-on-buff type appeared in the Phoenix Basin during this time. During the Pioneer Period, “founding villages” were established with central plazas and cemeteries where ancestors were worshipped and ceremonies were performed, part of a settlement system that continued in place for the next 600 years. Cremation became the normative mortuary practice and late in the Pioneer Period, some trash mounds were covered with caliche plaster, a precedent for later platform mounds.

Colonial Period (A.D. 750-950) – The Colonial Period was a time of cultural expansion and elaboration among the Hohokam, during which they achieved their highest level of sophistication in the production of arts and crafts. Villages had been established throughout southern and central Arizona, generally organized in courtyard groups that consisted of several pit houses surrounding a common workspace. These were in turn organized around one or more large plazas, with associated cemeteries, roasting areas, and trash mounds. The Hohokam continued expanding their

territory and economic interaction with their neighbors during the late Colonial Period (Santa Cruz Phase). Social organization appears tied to the exchange of ritual and subsistence goods. Ballcourts, found in larger villages by A.D. 800, became the dominant form of public architecture in central and southern Arizona and are thought to mark the onset of a regional system bound by religious, economic, and political links that crosscut the geophysical boundaries of the region. Subsistence was based on a mix of wild resources and agriculture, including the expansion of large irrigation systems in the Salt and Gila River valleys.

Sedentary Period (A.D. 950-1150) – The Sedentary Period saw a general decline in the quality of Hohokam material culture and a collapse of the regional system of interconnected ballcourt villages, possibly as a result of migration and reorganization due to heavy flooding, arroyo cutting, and possibly conflict with neighboring groups. By the end of this period, ballcourt construction was replaced by capped or platform mounds, and houses were more closely packed and exhibited significant variability in form. Agriculture still provided most foodstuffs, although some wild plant species were intensively exploited. Cotton production (for textile weaving and seed consumption) was also of major importance. By the end of the Sedentary Period, populations began to concentrate in larger villages along the Salt River.

Classic Period (A.D. 1150-1450) – By the beginning of the Classic Period, Hohokam culture had undergone some substantial changes, such as the increased practice of inhumation, the development of new residential and public architecture, and the reduction in scale of their trade network. Differences in ceramic decoration and architectural styles separate the Soho and the Civano Phases of the Classic Period. Red wares and long-neck jars became more common. Architecturally, surface structures with post-reinforced adobe walls were replaced by solid, adobe-walled surface rooms. Throughout the period, houses were more closely spaced, or contiguous, and surrounded by compound walls that often also enclosed small plazas. The Civano Phase saw the apex of Hohokam public architecture with the building of “big houses” like the one that can be seen today at Casa Grande National Monument, which likely served multiple functions and may have been symbols of elite status in Hohokam society.

The Classic Period Hohokam subsisted increasingly upon domesticates, and canal irrigation continued to be intensively used. The arrival of polychrome pottery during the Civano Phase may have reflected membership in a new belief system referred to as the “Southwestern Cult”, which may have been adopted to mediate environmental and social stressors during the late Soho/early Civano Phase. Civano Phase Hohokam social organization was clearly different from what preceded it and from what was to follow. Population size and density at many of the large sites reached never-before-seen levels. By the late Civano Phase, the success the Hohokam had enjoyed had vanished. High population densities, depletion of food resources, decline in agricultural productivity, disease and malnutrition, flooding, drought, and the collapse of many irrigation systems are cited as reasons for the collapse of the Hohokam.

Historic Period

The historic period begins with the 1753 founding of the first permanent Spanish settlement in the region and the introduction of written history to the region. Governance of the area transferred to Mexico in 1821 and the United States in 1853. The earliest American-period land use in the

vicinity of the Project area was limited to scattered homesteads and wagon roads connecting distant population centers. During the Historic Period, the Queen Creek Delta and nearby areas were used or occupied by the Apache (Nde), Yavapai (Yawepe), and Pima (Akimel O’Odham), with no record of significant Spanish or Mexican activity. Ongoing conflicts with Apache and Yavapai bands apparently played a role in delaying Euro-American intrusion into the region until the creation of Fort McDowell near the confluence of the Verde and Salt Rivers in the 1860s. Communities closer to the Project area were founded after the arrival of the railroad (1880s) and Salt River Project irrigation works (1900s).

City of Mesa – In 1877, Mormon missionaries, led by Daniel W. Jones, embarked on an expedition to Mexico from Utah, following a wagon road from Fort McDowell. They established a settlement in the Salt River Valley named Utahville and erected Fort Utah, later renamed Lehi. Mormon settlers continued to move into the area and established independent settlements consisting of Stringtown, Nephi, Alma, and Tempe. In 1878, a group of Mormon settlers known as the Mesa Pioneers arrived at the Lehi colony from Utah and established the largest community, named Mesa, which was surveyed, platted, and incorporated in 1883.

Following disastrous flooding of the Salt River in the late 1800s, flood control became a legislative initiative and flood control measures along the Salt River were instituted in the early 1900s. The Salt River Valley Water Users Association was incorporated under Arizona Law in 1903 and the Salt River Project was established. Construction on the Roosevelt Dam between 1905 and 1911 lead to an influx of workers to the area. Around the same time, the Apache Trail (SR 88) was built to move supplies and machinery from Mesa to the nearest railroad. In the 1940s, road construction started for the Beeline Highway (SR 87) between Mesa and Payson. Falcon Field and Williams Field were opened in the 1940s bringing in military personnel and their families. Since the 1940s, the city has experienced extensive population growth and development. Mesa, and the Salt River Valley overall, has been dramatically changed from agrarian settlements to urban development and infrastructure. Today, Mesa is the third largest city in Arizona with about 508,918 residents (US Census Bureau, 2020).

General Motors Desert Proving Grounds – In June 1951, General Motors (GM) purchased 2,280-acres of desert near Queen Creek to construct a permanent, hot-weather proving ground for testing automobiles. Dedicated on April 22, 1953, the facility included a 5-mile circular track, a 1.5-mile straightaway, a caretaker’s house, and quarters for visiting engineers. In 1963, GM began an expansion of the facility with an emphasis on testing auto performance and durability in the semiarid environment, including air conditioning, engine cooling, carburation, and transmission under desert conditions. Additions included expanded outdoor courses, new laboratory space, and engineering facilities. In 1974, the facility was expanded with the purchase of 2,000 acres south of Ray Road. In 1977, GM constructed additional roadways, including a “chatter loop” with poor road surface to test durability of shock absorbers and other suspension components. In 2004, GM began to sell off the property, citing encroaching urban sprawl and changes in vehicle testing methods as the primary reasons for its closure. By that time, the facility included 59 buildings and 74 miles of track. The former proving grounds site has been developed or is in the process of being developed as the Mesa Eastmark Community. The proposed Prickly Pear 230 kV Substation site is within the former proving grounds. An exhaustive history of the former proving grounds site is included in **Exhibit E-1**.

Existing Conditions

The Project area is within the Lower Colorado River subdivision of the Sonoran Desert scrub biotic community. Vegetation within the Project area includes paloverde, mesquite, creosote, bursage, brittle brush, and various grasses. Numerous unnamed drainages cross the Project area, flowing generally northeast to southwest. Elevation within the Project area averages 1,350 feet above mean sea level. Geologically, the Project area comprises primarily unconsolidated Holocene surficial deposits (0-10,000 years old) associated with modern fluvial systems, consisting primarily of fine-grained, well-sorted sediment on alluvial plains and gravelly channel, terrace, and alluvial fan deposits on middle and upper piedmonts. Soils are varied, but mostly consist of alluvial clays, loams, and clay loams.

The area surrounding the Project has been extensively developed. To the south and southwest is Phoenix-Mesa Gateway Airport, formerly the historic Williams Air Force Base, portions of which are listed in the National Register of Historic Places (NRHP). The former GM Proving Grounds to the east is no longer in use; the land has been zoned as Planned Community by the City of Mesa and is currently being redeveloped for residential, commercial, and industrial uses (Rogge, 2021). Arizona Loop 202, built in the early 2000s, lies on the west side of the Project area, with the SR 24, which is currently under construction, extending southeast from the Loop 202.

Previous Research

The following information leverages background research from both the Class III Cultural Resources Survey report for the proposed 230 kV transmission line ROW on State Trust Land (Peters, 2021) and the cultural resource records review conducted for the proposed substation site (Rogge, 2021), conducted in September and October 2021, supplemented with additional information included in the AZSITE cultural resources database as well as documents provided by SRP. The purpose of the investigation was to identify previous cultural resources studies and previously recorded cultural resources, which may include archaeological sites (prehistoric or historic), structures, buildings, landscapes, districts, or objects. In addition, historic maps and aerial photos were reviewed to better understand the history of the Project area.

Previous Cultural Resources Surveys

During background research, eighteen previous cultural resource studies were identified in the Project vicinity (**Table E-1**).

Proposed Prickly Pear 230 kV Substation

The proposed Prickly Pear 230 kV Substation footprint was previously surveyed for cultural resources. Arizona State Museum (ASM) Report 2007-114.ASM (Moore, 2006) details the survey of the GM Desert Proving Grounds, shown in bold in **Table E-1** below. No previously recorded cultural resources were identified within the proposed Prickly Pear 230 kV Substation footprint. No historical features were depicted on GLO plat maps within the Project vicinity. A detailed description of prior studies associated with the proposed Prickly Pear 230 kV Substation and vicinity are presented in **Exhibit E-1**.

Proposed 230 kV Transmission Line

Seven previous cultural resource studies were completed within the proposed 230 kV transmission line footprint which are shown in bold in **Table E-1** below. No previously recorded cultural resources were found within the proposed 230 kV transmission line footprint. No historical features were depicted on GLO plat maps within the Project vicinity.

Table E-1 Previous Investigations				
Report ID	Year	Author	Project	Location
7.3348.SHPO	Unknown	Unknown	Unknown	Within 1 mile
1980-217.ASM	1980	Pilles	Sunshine Fuels, Inc. Alcohol Distillery Plan	Within 1 mile
1984-112.ASM	1984	Effland and Green	HTL Energy Systems	Within Project footprint
1986-238.ASM	1986	Bruder and Rogge	Southwest Loop Highway (Loop 202)	Within 1 mile
1994-308.ASM	1994	Owens and Davies	Ellsworth Road between Warner and Guadalupe Roads	Within Project footprint
1998-420.ASM	1998	Brown	Ellsworth Road ROW between Germann and Baseline Roads	Within Project footprint
2000-23.ASM	2000	Rodgers	Elliot Road Detention Basins & Outfall Channel	Within Project footprint
2001-627.ASM	2001	Clark	Casey-Cooley 69 kV Subtransmission Line	Within Project footprint
2002-265.ASM	2002	Touchin et al.	Roosevelt Water Conservation District Second Pipeline	Within 1 mile
2003-1493.ASM	2003	Clark	Elliot Road, west of Ellsworth Road	Within 1 mile
2004-758.ASM	2004	Watts and Henderson	Proposed Substation Site on Warner Road	Within 1 mile
2004-1791.ASM	2004	Foster and Schmidt	230 acres at Hawes & the Loop 202 alignments	Within 1 mile
2006-975.ASM	2006	Petersen and Mitchell	290 acres of Private Land on northeast corner of Elliot & Ellsworth Roads	Within 1 mile
2007-114.ASM	2006	Moore	GM Desert Proving Grounds	Within Project footprint
2008-232.ASM	2002	Doyel and Rogge	Ellsworth Road & Flood Channel	Within Project footprint
2010-10.ASM	2010	Langan and Rehar	SR 802 (now SR 24); Williams Gateway Freeway, Loop 202 to Ironwood Drive	Within 1 mile
2012-22.ASM	2007	Banks et al.	ViaWest Properties Loop 202 & GMPG	Within 1 mile
NRI 19-11	2019	Billstrand, Cox, and Kober	Southeast Power Link	Within Project footprint

Previously Recorded Archaeological Sites

Eight previously recorded cultural resources were identified within the Project area (**Table E-2**). There are no previously recorded sites within the Project components.

Table E-2 Cultural Resources					
Site #	Affiliation	Site Type	Eligibility Status	Nearest Component	Distance (approximate)
AZ U:10:28 (ASM)	Prehistoric/ Hohokam	Artifact Scatter	Determined Not Eligible (SHPO 4/28/2003)	230 kV transmission line	1,300 feet NW
AZ U:10:29 (ASM)	Euro- American	Farmstead with historic-age features & trash scatter	Not Evaluated	230 kV transmission line	1,560 feet SW
AZ U:10:87 (ASM)	Euro- American	Trash dump	Not Evaluated	Prickly Pear 230 kV Substation	3,270 feet S
AZ U:10:230 (ASM)	Euro- American	GM Proving Grounds	Determined Not Eligible (SHPO 5/31/2017, as documented in AZSITE)	Prickly Pear 230 kV Substation	250 feet SE
AZ U:10:232 (ASM)	Prehistoric/ Hohokam	Artifact Scatter	Tested 2008; exhausted; recommended Not Eligible (Leonard et al., 2008)	230 kV transmission line	2,590 feet S
AZ U:10:233 (ASM)	Prehistoric/ Hohokam	Artifact Scatter	Tested 2008; exhausted; recommended Not Eligible (Leonard et al., 2008)	230 kV transmission line	2,370 feet S
AZ U:10:234 (ASM)	Prehistoric/ Hohokam	Artifact Scatter	Tested 2008; recommended Not Eligible (Leonard et al., 2008); destroyed (Steber and Deats, 2022)	230 kV transmission line	3,020 feet SW
AZ U:10:258 (ASM)	Prehistoric/ Hohokam	Artifact Scatter	Not Evaluated	230 kV transmission line	2,290 feet NW

AZ U:10:28 (ASM): This resource consists of two spatially discrete artifact scatters on a creosote flat, disturbed by heavy equipment and off-road vehicles. Surface artifacts include scores of ceramics of various types including Gila Plain, both Salt and Gila varieties, buffwares, redwares, and Wingfield Plain, and a single basalt flake. Both loci probably represent short-term resource exploitation and processing locales (Leonard, 2007). This site has been recommended not eligible (Peters, 2021).

AZ U:10:29 (ASM): This resource contains a concrete water tank inscribed with the date, 10-4-1937. It also contains a concrete house foundation and basement, well, and wire remains of at least several fenced enclosures. Although scattered artifacts occur throughout the site area, no temporally diagnostic materials were identified (Leonard, 2007). As of 2021, this site has not been evaluated (Peters, 2021).

AZ U:10:87 (ASM): This resource was originally recorded in 1998 as an American-period trash dump (Brown, 1998). It has not been evaluated for listing in the NRHP or Arizona Register of Historic Places (ARHP).

AZ U:10:230 (ASM): This resource is the historic GM Desert Proving Ground, including an automobile test track and two buildings, originally built in 1953, recorded in 2006 (Moore), and closed in 2009. The northwest arc of the circular 5-mile test track, one of the few extant portions of the site, is approximately 250 feet southeast of the proposed Prickly Pear 230 kV Substation. Moore recommended the resources as eligible for the NRHP/ARHR, and an evaluation plan was prepared (Leonard, 2007), but no documentation could be found to indicate the evaluation was conducted and the AZSITE database indicates that SHPO determined the resource to be not eligible to the NRHP (SHPO 5/31/2017 as documented in AZSITE).

AZ U:10:232 (ASM): This resource is a Hohokam sherd and lithic scatter in an area of lightly developed desert pavement. Extensive testing conducted in 2008 revealed a subsurface burned pit and concluded the site was likely the result of alluvial processes (Leonard et al., 2008). The resource was exhausted during testing and was recommended as not eligible to the NRHP.

AZ U:10:233 (ASM): This resource was originally recorded as fragments of cremated human remains and a variety of artifact types on the surface around large animal burrows. Extensive testing in 2008 encountered a concentration of calcined human bone, which was fully documented and recovered; no additional subsurface cultural remains were found (Leonard et al., 2008). The resource was exhausted during testing and was recommended as not eligible to the NRHP.

AZ U:10:234 (ASM): This resource was originally recorded as three plain ware pot drops and a concentration of flaked stone artifacts dating to an unknown prehistoric period. Extensive testing conducted in 2008 encountered no subsurface deposits and the site was recommended not eligible for listing on the NRHP (Leonard et al., 2008). The site was revisited by PaleoWest in 2021. The area was heavily disturbed and under active construction; no evidence of the site remained (Steber and Deats, 2022).

AZ U:10:258 (ASM): This resource was initially recorded as a Hohokam-era artifact scatter (Langan and Rehar, 2010). It has not been evaluated for listing in the NRHP or ARHP.

The result of the 2021 cultural resources records search and literature review shows that the entirety of the Project area had been previously surveyed for cultural resources, with the most recent survey occurring in 2008; however, as these projects were more than ten years old, ASLD requested that a new survey be conducted per Arizona State Historic Preservation Office (SHPO) guidance (see below).

Current Work

As part of the ASLD ROW application 14-122057-00-100 in 2021, SRP retained North Wind Resource Consulting to complete an intensive pedestrian cultural resource survey of the proposed 230 kV transmission line ROW (Peters, 2021). No cultural resources were identified during the survey, and ASLD consulted with the SHPO and ASM on the survey results pursuant to the State Historic Preservation Act (Arizona Revised Statutes [A.R.S.] §§ 41-861 through 41-864) and the Arizona Antiquities Act (A.R.S. §§ 41-841 through 41-844). For the proposed Prickly Pear 230 kV Substation property, the Data Center developer retained AECOM to conduct a cultural resource

records review, which documented that the parcel of privately-owned land had been previously surveyed intensively for cultural resources as part of the former GM Desert Proving Grounds cultural resources survey and that no properties listed in or eligible for the ARHP were identified within the proposed Prickly Pear 230 kV Substation property (Rogge, 2021).

Tribal Outreach

Correspondence with the Ak-Chin Indian Community, Gila River Indian Community, Hopi Tribe, Mescalero Apache Tribe, Pascua Yaqui Tribe, Pueblo of Zuni, Salt River Pima-Maricopa Indian Community, Tohono O’odham Nation, Tonto Apache Tribe, White Mountain Apache Tribe, and Yavapai-Apache Nation regarding cultural resources is included in **Exhibit E-2**. The cultural reports included in **Exhibit E-1** (Peters, 2021; Rogge, 2021) were also provided to the Tribes along with the correspondence. In addition, as part of the ASLD ROW application 14-122057-00-100 related to the proposed 230 kV transmission line ROW, ASLD consulted with the Tribes on the survey results.

Potential Effects

The entire Certificate of Environmental Compatibility (CEC) Project has been subject to previous cultural resources survey, and no archaeological sites or historic buildings or structures would be impacted by the Project. Accordingly, the proposed 230 kV transmission line and the proposed Prickly Pear 230 kV Substation would result in a finding of no historic properties affected.

Recommendations

For most cultural resources, the greatest potential for adverse impacts is from ground disturbing activities directly associated with Project construction. For the Project, ground disturbance would occur only within the Project components footprint. The desktop review, reconnaissance visits, and survey did not identify any historic sites and structures or archaeological sites in or near the Project site that would be affected by construction of the substation. No additional archaeological investigations were recommended by the Class III Cultural Report or Cultural Resources Memorandum.

While it is unlikely that unanticipated discoveries of archaeological, paleontological, or historical sites, human remains, funerary objects, sacred ceremonial objects or objects of national or tribal patrimony would occur during construction or operation of Project facilities, it is nonetheless possible. Unanticipated discoveries of such materials on state, county, or municipal lands are subject to A.R.S. § 41-844. For unanticipated discoveries of human remains or funerary objects on private lands, A.R.S. § 41-865 would prevail. If unanticipated discoveries are made in connection with construction activities, the Project would immediately suspend all operations in the vicinity of the find and would not resume until the discovery is appropriately treated and authorization is given by the appropriate agency.

References

Brown, Gregory. 1998. *An Archaeological Overview of a Seven-Mile-Long Segment of the Maricopa County Department of Transportation Ellsworth Road Right of Way Between Germann Road and Baseline Road, Mesa, Maricopa County, Arizona*. Logan Simpson Design, Phoenix.

Langan, John, S., Rehar, Courtney, C. 2010 *Cultural Resources Report for the Western Segment of SR 802, the Proposed Williams Gateway Freeway, Maricopa and Pinal Counties, Arizona*. AZTEC Engineering, Phoenix.

Leonard, Banks L. 2007. *Archaeological Testing Plan for Three Prehistoric Site and Architectural and Archival Evaluations of Historic Facilities at the Former General Motors Desert Proving Ground, Maricopa County, Arizona*. Technical Report 07-18. Soil Systems, Phoenix, Arizona.

Leonard, Banks L., Brown, Blayne R., Breternitz, Cory Dale, Robinson, Christine K. 2008. *Archaeological Testing Results for Three Sites on Approximately 216 acres of Private Land at the Southwest Corner of Warner and Ellsworth Roads in Mesa, Maricopa County, Arizona*. Soil Systems, Inc., Phoenix, Arizona.

Moore, Scotty B. 2006. *A Cultural Resources Survey of 3,200 Acres within the General Motors Proving Ground, Mesa, Maricopa County, Arizona*. Technical Report 06-59. Northland Research, Tempe, Arizona.

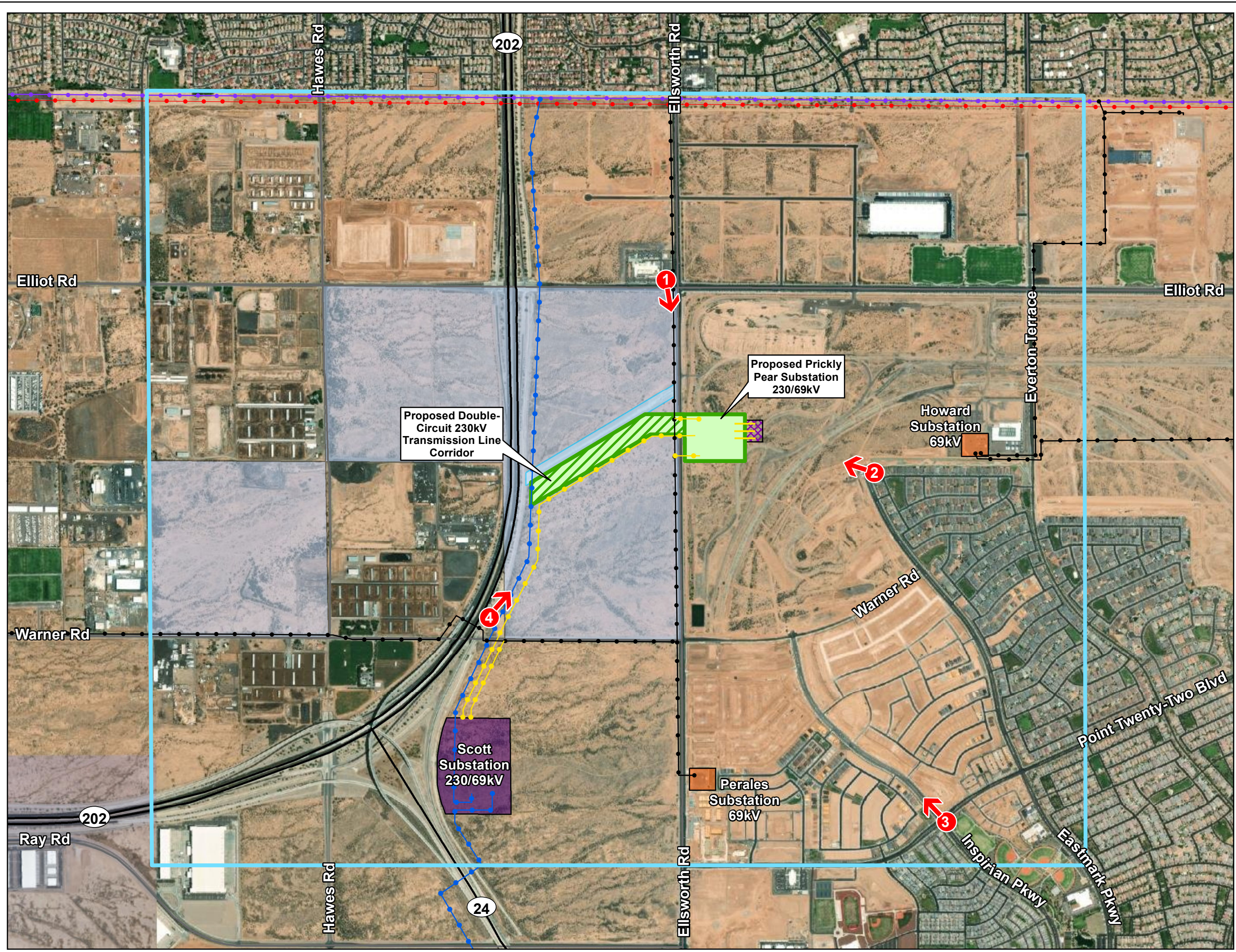
Peters, Matthew. 2021. *A Class III Cultural Resources Survey of 8,364 Acres for the Proposed Huckleberry Mesa Transmission Line Project, Mesa, Maricopa County, Arizona*. North Wind Resource Consulting, LLC., Phoenix, Arizona.

Rogge, Gene. 2021. *Project Huckleberry – Mesa Eastmark Site – Substation Permitting – Cultural Resources Memorandum*. AECOM, San Francisco, California.

Steber, Matthew, and Jennifer K. Deats. 2022. *Class III Cultural Resource Inventory of 191.7 Acres for the Salt River Project Southeast Power Link 230kV Transmission Line in the Cities of Mesa and Queen Creek, Maricopa County, Arizona*. PaleoWest, LLC., Phoenix, Arizona.

United States Census Bureau (USCB), 2020. ACS Demographic and housing Estimates accessed on 3/24/2022. [Online] located at:

<https://data.census.gov/cedsci/table?g=1600000US0446000&tid=ACSDP5Y2020.DP05>



LEGEND

Visual Resources
 Key Observation Point (KOP) Location and Direction

Project Huckleberry Components
 Proposed Double-Circuit 230kV Transmission Line Corridor
 Proposed Prickly Pear 230/69kV Substation
 Project Study Area

Other Components
 Existing 500kV Transmission Line
 Existing 230kV Transmission Line with 69kV Underbuild
 Existing 69kV Transmission Line
 Certificated Southeast Power Link 230kV Transmission Line
 69kV Transmission Line (under construction)
 Customer-Dedicated 69kV Line (under construction)
 State Highway
 Major Road
 Flood Control Channel
 Existing Substation
 Certificated Scott 230/69kV Substation
 Customer-Owned 69/34.5kV Substation (under construction)

Jurisdictional Land Ownership
 State Land

0 500 1,000 1,500 2,000
Feet

PROJECT HUCKLEBERRY
FIGURE E-1 KEY OBSERVATION POINTS
Map Extent: City of Mesa, AZ
Date: 4.8.22
Author: ckvw



Existing View from East Elliot Road and South Ellsworth Road Looking South



Visual Simulation of the Proposed Project

Project Huckleberry
Existing View and Visual Simulation from KOP 1
Figure E-2



Existing View from the North End of South Eastmark Parkway Looking Northwest



Visual Simulation of Proposed Project

Project Huckleberry
 Existing View and Visual Simulation from KOP 2
Figure E-3



Existing View from Inspirian Parkway and East Point Twenty-Two Boulevard Looking Northwest



Visual Simulation of Proposed Project

Project Huckleberry
Existing View and Visual Simulation from KOP 3
Figure E-4



Existing View from SR 24 to Loop 202 Ramp Looking Northeast



Visual Simulation of Proposed Project

Project Huckleberry
 Existing View and Visual Simulation from KOP 4
Figure E-5

EXHIBIT E-1
CLASS III CULTURAL RESOURCES SURVEY REPORT

***A Class III Cultural Resources
Survey of 8.364 Acres for the
Proposed Huckleberry Mesa
Transmission Line Project,
Mesa, Maricopa County,
Arizona***



Prepared for:
Salt River Project



Prepared by:
North Wind Resource Consulting, LLC



**STATE HISTORIC PRESERVATION OFFICE
SURVEY REPORT SUMMARY FORM**

1. REPORT TITLE

1a. Report Title: A Class III Cultural Resources Survey of 8.364 Acres for the Proposed Huckleberry Mesa Transmission Line Project, Mesa, Maricopa County, Arizona

1b. Report Author(s): Matthew Peters, M.A., RPA

1c. Date: September 15, 2021

1d. Report No.: 030346.004

2. PROJECT REGISTRATION/PERMITS

2a. ASM Accession Number: 2021-0366

2b. AAA Permit Number: 2021-0386bl

2c. ASLD Lease Application Number(s): 14-122057-00-100

2d. Other Permit Number(s): N/A

3. ORGANIZATION/CONSULTING FIRM

3a. Name: North Wind Resource Consulting, LLC (North Wind)

3b. Internal Project Number: 030346.004

3c. Internal Project Name: SRP Huckleberry Mesa Transmission Line Class III

3d. Contact Name: Matthew Peters

3e. Contact Address: 2025 N. 3rd Street, Suite B260 Phoenix, AZ 85004

3f. Contact Phone: 602.362.8050

3g. Contact Email: matthew.peters@northwindgrp.com

4. SPONSOR/LEAD AGENCY

4a. Sponsor: Salt River Project Agricultural Improvement and Power District (SRP)

4b. Lead Agency: Arizona State Land Department (ASLD)

4c. Agency Project Number(s): N/A

4d. Agency Project Name: N/A

4e. Funding Source(s): Private

4f. Other Involved Agencies: N/A

4g. Applicable Regulations: Arizona State Historic Preservation Act, [Arizona Revised Statutes (ARS) 41-861 et seq.]; Arizona Antiquities Act (ARS 41-841 et seq.)

5. DESCRIPTION OF PROJECT OR UNDERTAKING: The project is being done in anticipation of the construction and maintenance of two parallel transmission lines by SRP.

As proposed, one is a double circuit 230 kV line with two circuits of 69kV lines underbuilt on the same pole and optical ground wire (OPGW) line running on top of the poles and the second is a double circuit 69kV line with an OPGW running across the top (Grew 2021). In total, the lines will span 8.364 acres of Arizona State Trust lands, near the City of Mesa, Maricopa County, Arizona. The entirety of the project area has been previously surveyed for cultural resources, with the most recent survey occurring in 2001; however, as these projects are now more than ten years old, ASLD is requesting that a new survey be conducted per Arizona State Historic Preservation Office (SHPO) guidance.

6. PROJECT AREA/AREA OF POTENTIAL EFFECTS: The project area consists of 8.364 acres of ASLD-administered land located to the east of Loop 202 (L202) and west of S. Ellsworth Road, near Mesa, Maricopa County, Arizona. E. Elliott Road is located to the north of the project area and E. Warner Road is to the south. Specifically, the project area is approximately one mile long and has a maximum width of 130 feet.

7. PROJECT LOCATION

7a. Address: N/A

7b. Route: N/A **7c. Mileposts Limits:** N/A

7d. Nearest City/Town: Mesa **7e. County:** Maricopa

7f. Project Locator UTM: 440209m East 3689394m North **7g. NAD:** 83 **7h. Zone:** 12

7i. Baseline & Meridian: GSRBM **7j. USGS Quadrangle(s):** Higley 7.5-minute series

7k. Legal Description(s): The project area is located in the east half of Section 16, Township 1 South, Range 7 East.

8. SURVEY AREA

8a. Total Acres: 8.364

8b. Survey Area.

1. Land Jurisdiction	2. Total Acres Surveyed	3. Total Acres Not Surveyed	4. Justification for Areas Not Surveyed
ASLD	8.364	0	N/A

9. ENVIRONMENTAL CONTEXTS

9a. Landform: Desert; lowelevation desert scrub

9b. Elevation: 1,390 feet above mean sea level (amsl)

9c. Surrounding Topographic Features: The San Tan Mountains are located approximately 10 miles to the south. The Superstition Mountains are approximately 12 miles to the east, and Utery Mountains are approximately 9 miles to the north. Red Mountain is approximately 13 miles to the northwest.

9d. Nearest Drainage: Queen Creek is located approximately 5.4 miles south of the project area.

9e. Local Geology: The project area is located in the Basin and Range Physiographic Province, which is characterized by low desert surrounded by fault-block mountains (Chronic 1983).

9f. Vegetation: The project area is located in the Lower Colorado River subdivision of the Sonoran Desert scrub biotic community (Turner and Brown 1994). Vegetation includes mesquite, creosote bush, sage, and various species of shrubs and grasses.

9g. Soils/Deposition: Soil consists of gravelly loams that are composed of mixed alluvium derived from granite monzonite, rhyolite, andesite, and other igneous rocks from the Black Mountain area.

9h. Buried Deposits: Low probability

9i. Justification: The project area has been subject to previous cultural resources surveys, all of which resulted in negative findings within the current project area.

10. BUILT ENVIRONMENT: The project area consists of an undeveloped area bounded by the L202 to the west, S. Ellsworth Road to the east, E. Elliott Road to the north, and E. Warner Road to the south. A portion of the project area alignment follows a drainage ditch constructed in 2001, which runs roughly southwest to northeast between the L202 and S. Ellsworth Road. Roads parallel both sides of the ditch. Just west of S. Ellsworth Road, the ditch is piped underground through a corrugated metal pipe culvert with a concrete headwall.

11. INVENTORY CLASS COMPLETED

11a. Class I Inventory: ☒

11b. Researcher(s): Matthew Peters and Robert Pitroff

11c. Class II Survey: ☐

11d Sampling Strategy: N/A

11e. Class III Inventory: ☒

12. BACKGROUND RESEARCH SOURCES

12a. AZSITE: ☒

12b. ASM Archaeological Records Office: ☒

12c. SHPO Inventories and/or SHPO Library: ☒

12d. NRHP Database: ☒

12e. ADOT Portal: ☐

12f. GLO Maps: Plat Nos. 202329 (surveyed 1868, filed 2/2/1870) and 202331 (surveyed 1911, officially filed 3/10/1913)

12g. Land-Managing Agency Files: N/A

12h. Tribal Cultural Resources Files: N/A

12i. Local Government Websites: N/A**12j. Other: N/A****13. BACKGROUND RESEARCH RESULTS**

A total of 18 previous cultural resources studies (Table 1; Figure 3, Confidential Appendix) and eight previously recorded cultural resources (Table 2; Figure 3, Confidential Appendix) were identified during background research. Five of the previous cultural resources studies intersect the project area. These surveys are bolded in the Table 1 below. No previously recorded sites are within the project area. No features were depicted on GLO plat maps within the project vicinity.

13a. Previous Projects within Study Area (Table 1).

1. Project No.	2. Project Name/Report Title	3. Author(s)	4. Year
7.3348.SHPO	Unknown	Unknown	Unknown
1980-217.ASM	An Archaeological Survey of the Sunshine Fuels, Inc. Alcohol Distillery Plant, Arizona State Land, Maricopa County.	Pilles	1980
1984-112.ASM	Letter Report to Gary Smith, HTL Energy Systems dated October 10, 1984	Effland & Green	1984
1986-238.ASM	Cultural Resources Technical Report for the Southwest Loop Highway	Bruder and Rogge	1986
1994-308.ASM	A Cultural Resources Survey of Ellsworth Road Between Warner & Guadalupe Roads, Gilbert, Maricopa County, Arizona	Owens & Davies	1994
1998-420.ASM	An Archaeological Survey of a Seven-Mile-Long Segment of the Maricopa County Department of Transportation (MCDOT) Ellsworth Right-of-Way Between Germann Road & Baseline Road, Mesa, Maricopa County, Arizona	Brown	1998
2000-23.ASM	An Archaeological Inventory of the Elliot Road Detention Basins & Outfall Channel Project Area of Southeastern Mesa, Arizona	Rodgers	2000
2001-627.ASM	An Archaeological Survey of the Casey-Cooley 69kV Subtransmission Line, Maricopa County, Arizona	Clark	2000
2002-265.ASM	A Class III Cultural Resources Survey for the Roosevelt Water Conservation District Second Pipeline Project, Maricopa & Pinal Counties, Arizona	Touchin et al.	2002
2003-1493.ASM	Cultural Resource Survey along Elliot Road, West of Ellsworth Road Survey, Mesa, Maricopa County, Arizona	Clark	2003
2004-758.ASM	Cultural Resources Survey of a Proposed Electrical Substation Site on Warner	Watts & Henderson	2004

1. Project No.	2. Project Name/Report Title	3. Author(s)	4. Year
	Road, West of Ellsworth Road, Mesa, Maricopa County, Arizona		
2004-1791.ASM	An Archaeological Survey of 230 Acres at Hawes & the 202 Alignments, Mesa, Maricopa County, Arizona	Foster & Schmidt	2004
2006-975.ASM	An Archaeological Survey of 290 Acres of Private Land on the Northeast Corner of Elliott & Ellsworth Roads in Mesa, Maricopa County, Arizona	Petersen & Mitchell	2006
2007-114.ASM	A Cultural Resources Survey of 11 Acres Southwest of the Intersection of Ellsworth & Guadalupe Roads, Mesa, Maricopa County, Arizona	Gage	2006
2008-232.ASM	Supplemental Cultural Resources Survey & Effect Assessment for the Proposed Ellsworth Road (Germann Road to Guadalupe Road) & Flood Channel Projects, Mesa, Maricopa County, Arizona	Doyel & Rogge	2002
2010-10.ASM	SR 802; Williams Gateway Freeway, SR 202 to Ironwood Dr.	Langan & Rehar	2010
2012-22.ASM	ViaWest Properties Loop 202 & GMPG	Banks et al.	2007
19-11	Southeast Power Link	Billstrand, Cox, & Kober	2019

13b. Previously Recorded Cultural Resources within Study Area (Table 2).

1. Site Number	2. Affiliation	3. Site Type	4. Eligibility Status	5. Associated Reference(s)
AZ U:10:28(ASM)	Prehistoric/Hohokam	Artifact scatter	Not Eligible	Bruder and Rogge 1987
AZ U:10:29(ASM)	Euro-American	Farmstead with historic-age features & trash scatter	Not Evaluated	Bruder and Rogge 1987
AZ U:10:87(ASM)	Euro-American	Trash dump	Not Evaluated	Brown & Webb 1998
AZ U:10:230(ASM)	Euro-American	GM proving grounds	Not Eligible	Moore 2006
AZ U:10:232(ASM)	Prehistoric/Hohokam	Artifact scatter	Not Evaluated	AZSITE 2021
AZ U:10:233(ASM)	Prehistoric/Hohokam	Artifact scatter	Eligible	AZSITE 2021
AZ U:10:234(ASM)	Prehistoric/Hohokam	Artifact scatter	Not Evaluated	AZSITE 2021
AZ U:10:258(ASM)	Prehistoric/Hohokam	Artifact scatter	Not Evaluated	Langan & Rehar 2010

13c. Historic Buildings/Districts/Neighborhoods

N/A

14. CULTURAL CONTEXTS**14a. Prehistoric Culture:** Hohokam**14b. Protohistoric Culture:** O'odham**14c. Indigenous Historic Culture:** O'odham**14d. Euro-American Culture:** 1800s–present**15. FIELD SURVEY PERSONNEL****15a. Principal Investigator:** Matthew Peters, M.A., RPA**15b. Field Supervisor:** Matthew Peters, M.A., RPA**15c. Crew:** Matthew Peters, M.A., RPA**15d. Fieldwork Date(s):** September 10, 2021**16. SURVEY METHODS****16a. Transect Intervals:** 15 meters apart**16b. Coverage (%):** 100%**16c. Site Recording Criteria:** Arizona State Museum (ASM)**16d. Ground Surface Visibility:** 50-60%**16e. Observed Disturbances:** The project area is heavily used by bird hunters and for modern trash disposal. Additionally, vehicle tracks were observed throughout the parcel. The area is also prone to flooding and water pooling.**17. FIELD SURVEY RESULTS****17a. No Cultural Resources Identified:** ☒**17b. Isolated Occurrences (IOs) Only:** ☐**17c. Number of IOs Recorded:** None**17d. Table of IOs.**

1. IO Number	2. Description	3. Date Range	4. UTM's
N/A	N/A	N/A	N/A

18. COMMENTS:

North Wind, on behalf of SRP, conducted a Class III cultural resources survey of 8.364 acres of ASLD-administered land in support of the proposed Huckleberry Mesa transmission line construction project in Mesa, Maricopa County, Arizona. No cultural resources were identified within the project area; thus, North Wind recommends that the undertaking will

result in no effect to historic properties. No additional archaeological investigations are recommended.

SECTION 19. ATTACHMENTS

19a. Project Location Map: ☒

19b. Land Jurisdiction Map: ☒

19c. Background Research Map(s): ☒

19d. GLO Map(s): ☒

19e. References: ☒

SECTION 20. CONSULTANT CERTIFICATION

I certify the information provided herein has been reviewed for content and accuracy and all work meets applicable agency standards.



Signature

Principal Investigator

Title

SECTION 21. DISCOVERY CLAUSE

In the event that previously unreported cultural resources are encountered during ground disturbing activities, all work must immediately cease within 30 meters (100 feet) until a qualified archaeologist has documented the discovery and evaluated its eligibility for the Arizona or National Register of Historic Places in consultation with the lead agency, the SHPO, and Tribes, as appropriate. Work must not resume in this area without approval of the lead agency.

If human remains are encountered during ground-disturbing activities, all work must immediately cease within 30 meters (100 feet) of the discovery and the area must be secured. The Arizona State Museum, lead agency, SHPO, and appropriate Tribes must be notified of the discovery. All discoveries will be treated in accordance with Arizona Revised Statutes (A.R.S. § 41-844 and A.R.S. § 41-865), as appropriate, and work must not resume in this area without authorization from ASM and the lead agency.

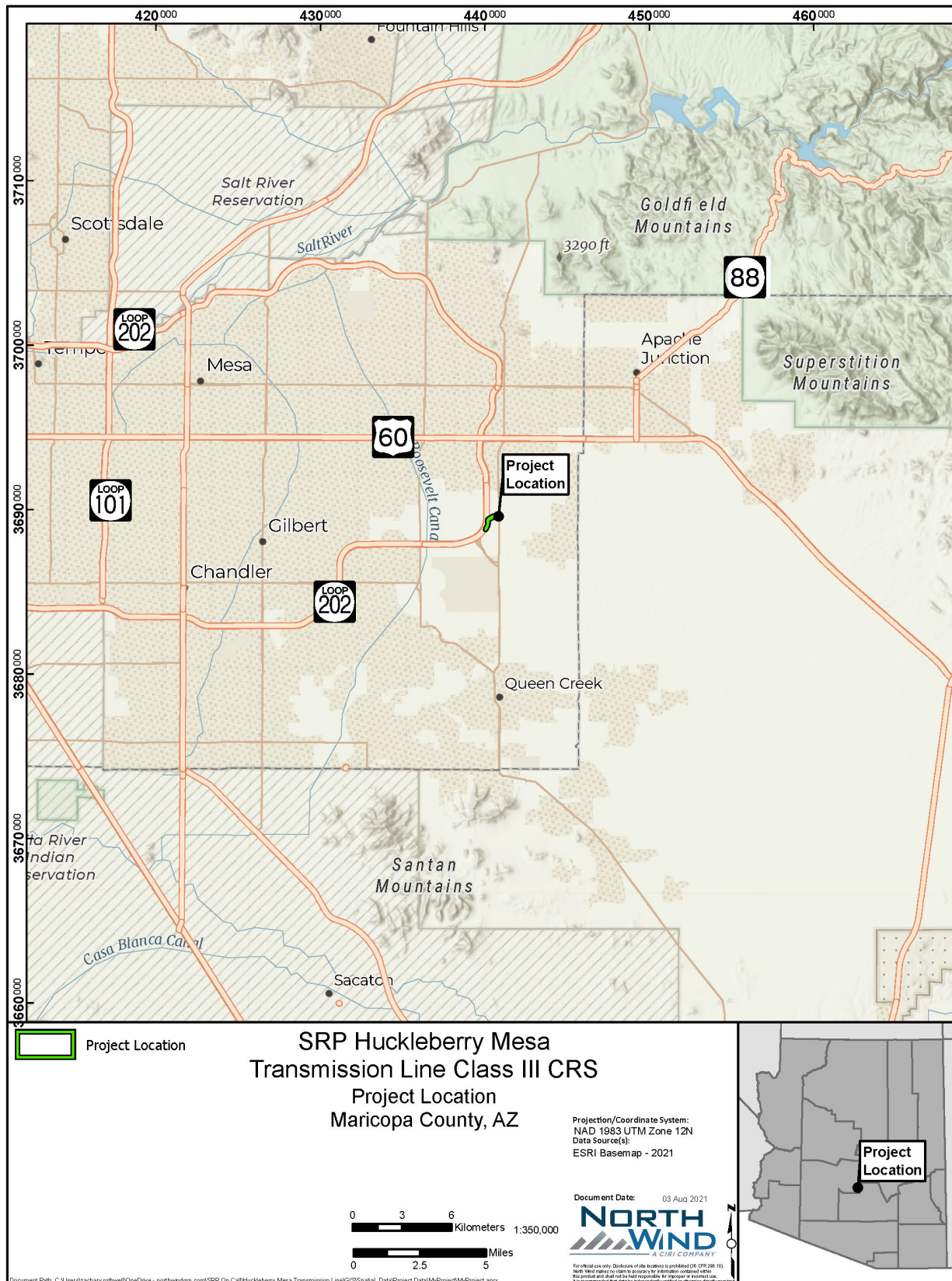


Figure 1. Project area map.

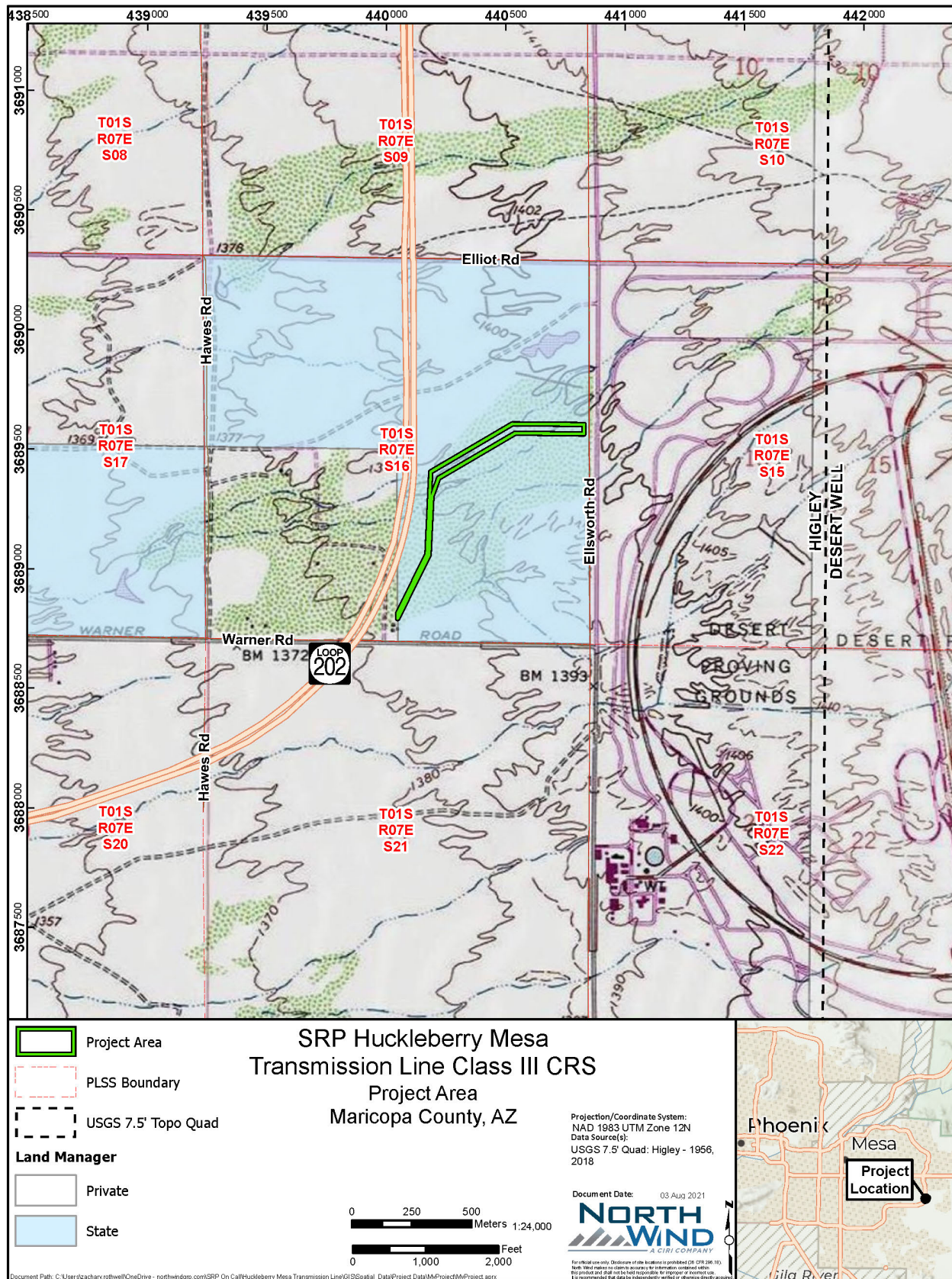


Figure 2. Project location map showing land jurisdiction.



Photograph 1. Project area overview at the south end, facing southwest.



Photograph 2. Project area overview at the northeast end, facing southwest.

References

AZSITE

2021 AZSITE Database Search. Electronic document accessed September 2021.
<http://www.azsite.arizona.edu/>.

Banks, Leonard L., Cory Dale Breternitz, and Christine K. Robinson

2007 *A Cultural Resources Survey of Approximately 216 Acres of Private Land at the Southwest Corner of Warner and Ellsworth Roads in Mesa, Maricopa County, Arizona*. Technical Report No. 07-25. Soil Systems, Inc., Phoenix, Arizona.

Billstrand, Nicholas R., Eric S. Cox, and Brent Kober

2019 *A Cultural Resources Survey of 12.1 Acres of Arizona State Trust Land Located Between E. Elliott Road and E. Warner Road Near Mesa, Maricopa County, Arizona*. Report No. 19-11. Northland Research, Inc., Phoenix.

Bruder, J.S. and A.E. Rogge

1987 *Cultural Resources Technical Report for the Southeast Loop Highway*. Dames and Moore, Phoenix.

Brown, Gregory

1998 *An Archaeological Overview of a Seven-Mile-Long Segment of the Maricopa County Department of Transportation Ellsworth Road Right of Way Between Germann Road and Baseline Road, Mesa, Maricopa County, Arizona*. Logan Simpson Design, Phoenix.

Chronic, Halka

1983 *Roadside Geology of Arizona*. Mountain Press Publishing Company, Missoula, Montana.

Clark, Tiffany C.

2000 *An Archaeological Survey of the Casey-Cooley 69kV Subtransmission Line, Maricopa County, Arizona*. Desert Archaeology, Inc., Tucson.

2003 *Cultural Resources Survey along Elliott Road, West of Ellsworth Road, Mesa, Maricopa County, Arizona*. Project Report No. 03-215. Desert Archaeology, Inc., Tucson.

Doyel, David and A. E. Rogge

2002 *Supplemental Cultural Resource Survey and Effect Assessment for the Proposed Ellsworth Road (Germann Road to Guadalupe Road) and Flood Channel Projects, Mesa, Maricopa County, Arizona*. URS Corporation, Phoenix.

Effland, Richard and Margerie Green

1984 Letter Report to Gary Smith, HTL Energy Systems, dated October 10, 1984. Arizona State Museum, Tucson.

Foster, Michael S. and Cara Schmidt

2004 *An Archaeological Survey of 230 Acres at Hawes and the 202 Alignments, Mesa, Maricopa County, Arizona*. SWCA Cultural Resources Report No. 04-341. SWCA Environmental Consultants, Phoenix.

Gage, Gina S.

2006 *A Cultural Resources Survey of 11 Acres Southwest of the Intersection of Ellsworth and Guadalupe Roads, Mesa, Maricopa County, Arizona*. Technical Report No. 06-02.

Grew, Tiffany L.

2021 Letter to Jim Claeys, Land Disposition Project Leader 2, Arizona State Land Department, dated July 21, 2021. On file at Salt River Project, Tempe.

Moore, Scotty B.

2006 *A Cultural Resources Survey of 3,200 Acres within the General Motors Proving Ground, Mesa, Maricopa County, Arizona*. Technical Report No. 06-59, Northland Research, Inc., Tempe.

Owens, Jeffrey D. and Caroline P. Davies

1994 *A Cultural Resources Survey of Ellsworth Road between Warner and Guadalupe Roads, Gilbert, Maricopa County, Arizona*. Soil Systems, Inc., Phoenix.

Petersen, Eric S. and Douglas Mitchell

2006 *An Archaeological Survey of 290 Acres of Private Land on the Northeast Corner of Elliott and Ellsworth Roads in Mesa, Maricopa County, Arizona*. SWCA Cultural Resources Report No. 06-445. SWCA Environmental Consultants, Tucson.

Pilles, Peter J., Jr.

1980 *An Archaeological Survey of the Proposed Sunshine Fuels, Incorporated Alcohol Distillery Plant, Arizona State Land, Maricopa County*. Complete Archaeological Services Associates, Flagstaff.

Rodgers, James

2000 *An Archaeological Inventory of the Elliott Road Detention Basins and Outfall Channel Project Area of Southeastern Mesa, Arizona*. Contract Archaeological Series 00-1, Scientific Archaeological Services, Phoenix.

Touchin, Jewel, Erika Palmer, and Mark Brodbeck

2002 *A Class III Cultural Resources Survey for the Roosevelt Water Conservation District (RWCD) Second Pipeline Project, Maricopa and Pinal Counties, Arizona*. Cultural Resource Report 02-09. HDR Engineering, Inc., Phoenix.

Turner, Raymond M. and David E. Brown

1994 Tropical-Subtropical Desertlands: Sonoran Desertscrub. In *Biotic Communities: Southwestern United States and Northwestern Mexico*, edited by David E. Brown, pp. 180-221. University of Utah Press, Salt Lake City.

Watts, Joshua and T. Kathleen Henderson

2004 *Cultural Resources Survey of a Proposed Electrical Substation Site on Warner Road, West of Ellsworth Road, Mesa, Maricopa County, Arizona*. Project Report No. 04-156. Desert Archaeology, Inc., Tucson.

EXHIBIT E-2
TRIBAL CORRESPONDENCE



Biological and Cultural Resources | PAB359
P.O. Box 52025
Phoenix, AZ 85072-2025

March 29, 2022

Mr. Peter Yucupicio
Chairman
Pascua Yaqui Tribe
7474 S. Camino de Oeste
Tucson, AZ 85746

RE: Project Huckleberry 230 kV Transmission Line Cultural Resources
No Historic Properties Affected

Dear Chairman Yucupicio,

Salt River Project Agricultural Improvement and Power District (SRP), is proposing the construction of the Project Huckleberry 230 kilovolt (kV) Transmission Line (Project). The Project is an approximately 0.5-mile-long 230 kV double circuit transmission line and associated interconnection facilities that will provide power to the proposed Meta Mesa Data Center (Data Center) located in Mesa, Arizona (see attached map). In addition to the new transmission line, the Project involves construction of the new Prickly Pear Substation.

The Project is in Township 1 South, Range 7 East, Sections 15 and 16, Gila and Salt River Base Line and Meridian, as depicted on the Higley, Arizona U.S. Geological Survey topographic quadrangle.

The proposed 230 kV transmission line would be constructed within right-of-way across undeveloped State Trust land managed by the Arizona State Land Department (ASLD), and would connect with the approved but as-yet unbuilt Southeast Power Link transmission line. The Prickly Pear Substation would be built on private land owned by Meta currently under development as part of the larger Mesa Data Center campus.

SRP is seeking a Certificate of Environmental Compatibility (CEC) from the Arizona Corporation Commission (ACC) for this Project. Consulting parties for this Project are the State Historic Preservation Office, Ak-Chin Indian Community, Gila River Indian Community, Hopi Tribe, Mescalero Apache Tribe, Pascua Yaqui Tribe, Pueblo of Zuni, Salt River Pima-Maricopa Indian Community, Tohono O'odham Nation, Tonto Apache Tribe, White Mountain Apache Tribe, and Yavapai-Apache Nation.

As part of the ASLD right-of-way application 14-122057-00-100 in 2021, SRP retained North Wind Resource Consulting to complete an intensive pedestrian cultural resource survey of the

proposed 230 kV transmission line corridor. No cultural resources were identified during the survey, and ASLD consulted with the State Historic Preservation Office, Arizona State Museum, Gila River Indian Community, Hopi Tribe, Pascua Yaqui Tribe, Pueblo of Zuni, Salt River Pima-Maricopa Indian Community, Tonto Apache Tribe, White Mountain Apache Tribe and Yavapai-Apache Nation on the survey results pursuant to the State Historic Preservation Act (Arizona Revised Statutes 41-861 through 4-864), and the Arizona Antiquities Act (Arizona Revised Statutes 41-841 through 4-844). For the proposed Prickly Pear Substation property, the Mesa Data Center developer retained AECOM to conduct a cultural resource records review, which documented that the parcel of privately owned land had been previously surveyed intensively for cultural resources as part of the former Mesa Proving Grounds cultural resources survey and that no properties listed in or eligible for the ARHP were identified within the proposed Prickly Pear Substation property. Thus, the entire CEC Project area has been subject to cultural resources survey and no archaeological sites or historic buildings or structures would be impacted by the Project. Accordingly, the proposed 230 kV transmission line and substation would result in a finding of "no historic properties affected."

I have enclosed copies of the cultural resource documents compiled for the Project for your review. All sensitive cultural resource locational information, including maps, will be redacted from any copies of these documents available to the general public.

Please let SRP know if you have any concerns regarding cultural resources as well as any sites of traditional, religious, cultural, or historical importance to your community within the Project vicinity. SRP anticipates filing the CEC Application by May 1, 2022. Please provide comments to my attention, using the details below:

Daniel Garcia
Senior Cultural Resource Management Specialist
SRP Biological and Cultural Resource Services PAB359
P.O. Box 52025, Phoenix, AZ 85072-2025
Dan.Garcia@srpnet.com

Your correspondence will be included as part of the Project record that is filed with the ACC. Additional Project information regarding the project is available online at www.srpnet.com/electric/transmission/projects/Huckleberry. If you have any questions or would like to discuss the results of the cultural resources survey, please do not hesitate to contact me by email at dan.garcia@srpnet.com or by telephone at 602.236.2336.

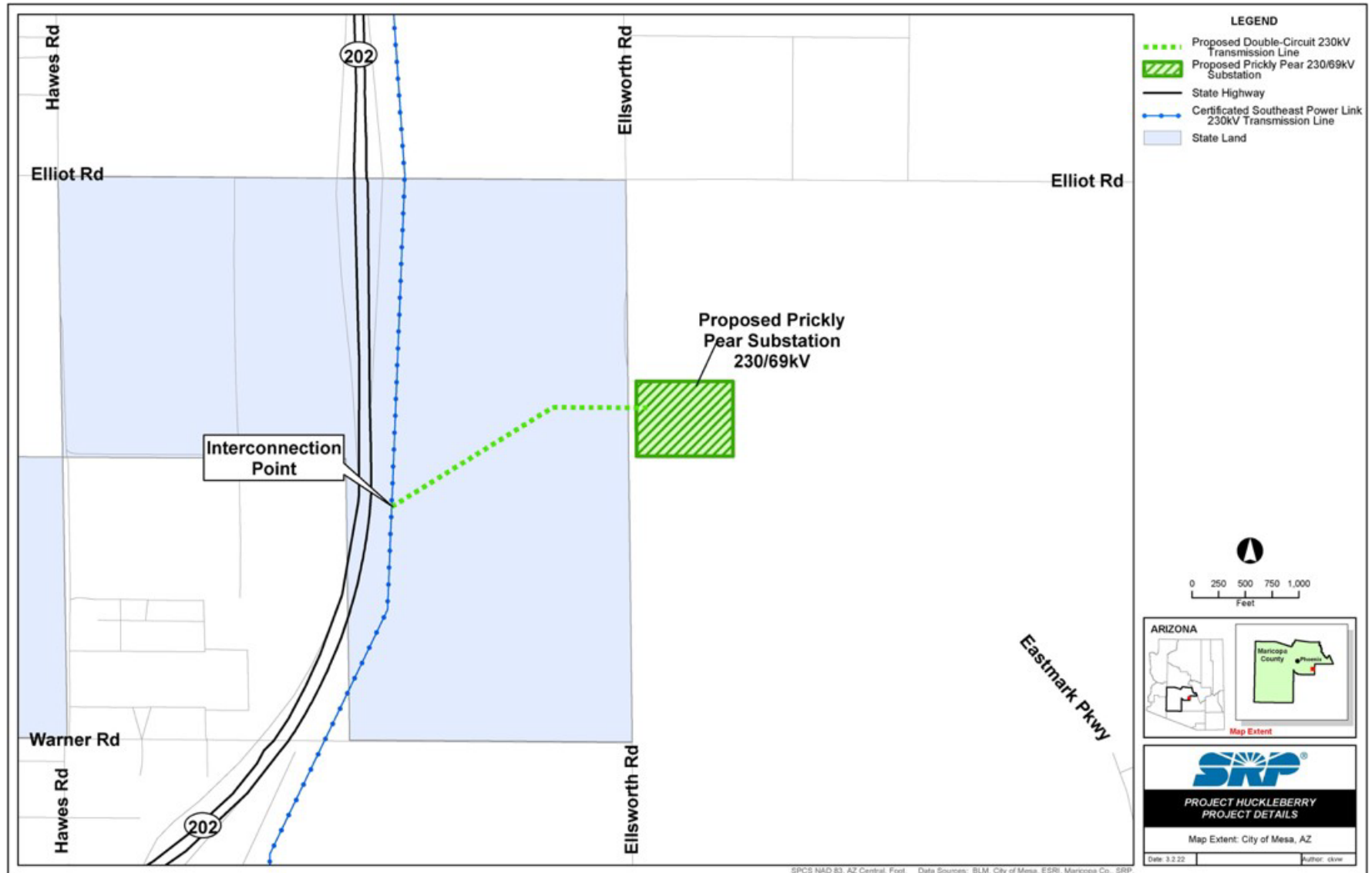
Respectfully,



Daniel Garcia, M.A., RPA
SRP Archaeologist - Senior Cultural Resource Management Specialist

CC: Dr. Karl Hoerig, with enclosures

Project Huckleberry Project Components Map





Biological and Cultural Resources | PAB359
P.O. Box 52025
Phoenix, AZ 85072-2025

March 29, 2022

Gwendena Lee-Gatewood
Chairwoman
White Mountain Apache Tribe
PO Box 700
Whiteriver, AZ 85941

RE: Project Huckleberry 230 kV Transmission Line Cultural Resources
No Historic Properties Affected

Dear Chair Lee-Gatewood,

Salt River Project Agricultural Improvement and Power District (SRP), is proposing the construction of the Project Huckleberry 230 kilovolt (kV) Transmission Line (Project). The Project is an approximately 0.5-mile-long 230 kV double circuit transmission line and associated interconnection facilities that will provide power to the proposed Meta Mesa Data Center (Data Center) located in Mesa, Arizona (see attached map). In addition to the new transmission line, the Project involves construction of the new Prickly Pear Substation.

The Project is in Township 1 South, Range 7 East, Sections 15 and 16, Gila and Salt River Base Line and Meridian, as depicted on the Higley, Arizona U.S. Geological Survey topographic quadrangle.

The proposed 230 kV transmission line would be constructed within right-of-way across undeveloped State Trust land managed by the Arizona State Land Department (ASLD), and would connect with the approved but as-yet unbuilt Southeast Power Link transmission line. The Prickly Pear Substation would be built on private land owned by Meta currently under development as part of the larger Mesa Data Center campus.

SRP is seeking a Certificate of Environmental Compatibility (CEC) from the Arizona Corporation Commission (ACC) for this Project. Consulting parties for this Project are the State Historic Preservation Office, Ak-Chin Indian Community, Gila River Indian Community, Hopi Tribe, Mescalero Apache Tribe, Pascua Yaqui Tribe, Pueblo of Zuni, Salt River Pima-Maricopa Indian Community, Tohono O'odham Nation, Tonto Apache Tribe, White Mountain Apache Tribe, and Yavapai-Apache Nation.

As part of the ASLD right-of-way application 14-122057-00-100 in 2021, SRP retained North Wind Resource Consulting to complete an intensive pedestrian cultural resource survey of the proposed 230 kV transmission line corridor. No cultural resources were identified during the survey, and ASLD consulted with the State Historic Preservation Office, Arizona State Museum,

Gila River Indian Community, Hopi Tribe, Pascua Yaqui Tribe, Pueblo of Zuni, Salt River Pima-Maricopa Indian Community, Tonto Apache Tribe, White Mountain Apache Tribe and Yavapai-Apache Nation on the survey results pursuant to the State Historic Preservation Act (Arizona Revised Statutes 41-861 through 4-864), and the Arizona Antiquities Act (Arizona Revised Statutes 41-841 through 4-844). For the proposed Prickly Pear Substation property, the Mesa Data Center developer retained AECOM to conduct a cultural resource records review, which documented that the parcel of privately owned land had been previously surveyed intensively for cultural resources as part of the former Mesa Proving Grounds cultural resources survey and that no properties listed in or eligible for the ARHP were identified within the proposed Prickly Pear Substation property. Thus, the entire CEC Project area has been subject to cultural resources survey and no archaeological sites or historic buildings or structures would be impacted by the Project. Accordingly, the proposed 230 kV transmission line and substation would result in a finding of "no historic properties affected."

I have enclosed copies of the cultural resource documents compiled for the Project for your review. All sensitive cultural resource locational information, including maps, will be redacted from any copies of these documents available to the general public.

Please let SRP know if you have any concerns regarding cultural resources as well as any sites of traditional, religious, cultural, or historical importance to your community within the Project vicinity. SRP anticipates filing the CEC Application by May 1, 2022. Please provide comments to my attention, using the details below:

Daniel Garcia
Senior Cultural Resource Management Specialist
SRP Biological and Cultural Resource Services PAB359
P.O. Box 52025, Phoenix, AZ 85072-2025
Dan.Garcia@srpnet.com

Your correspondence will be included as part of the Project record that is filed with the ACC. Additional Project information regarding the project is available online at www.srpnet.com/electric/transmission/projects/Huckleberry. If you have any questions or would like to discuss the results of the cultural resources survey, please do not hesitate to contact me by email at dan.garcia@srpnet.com or by telephone at 602.236.2336.

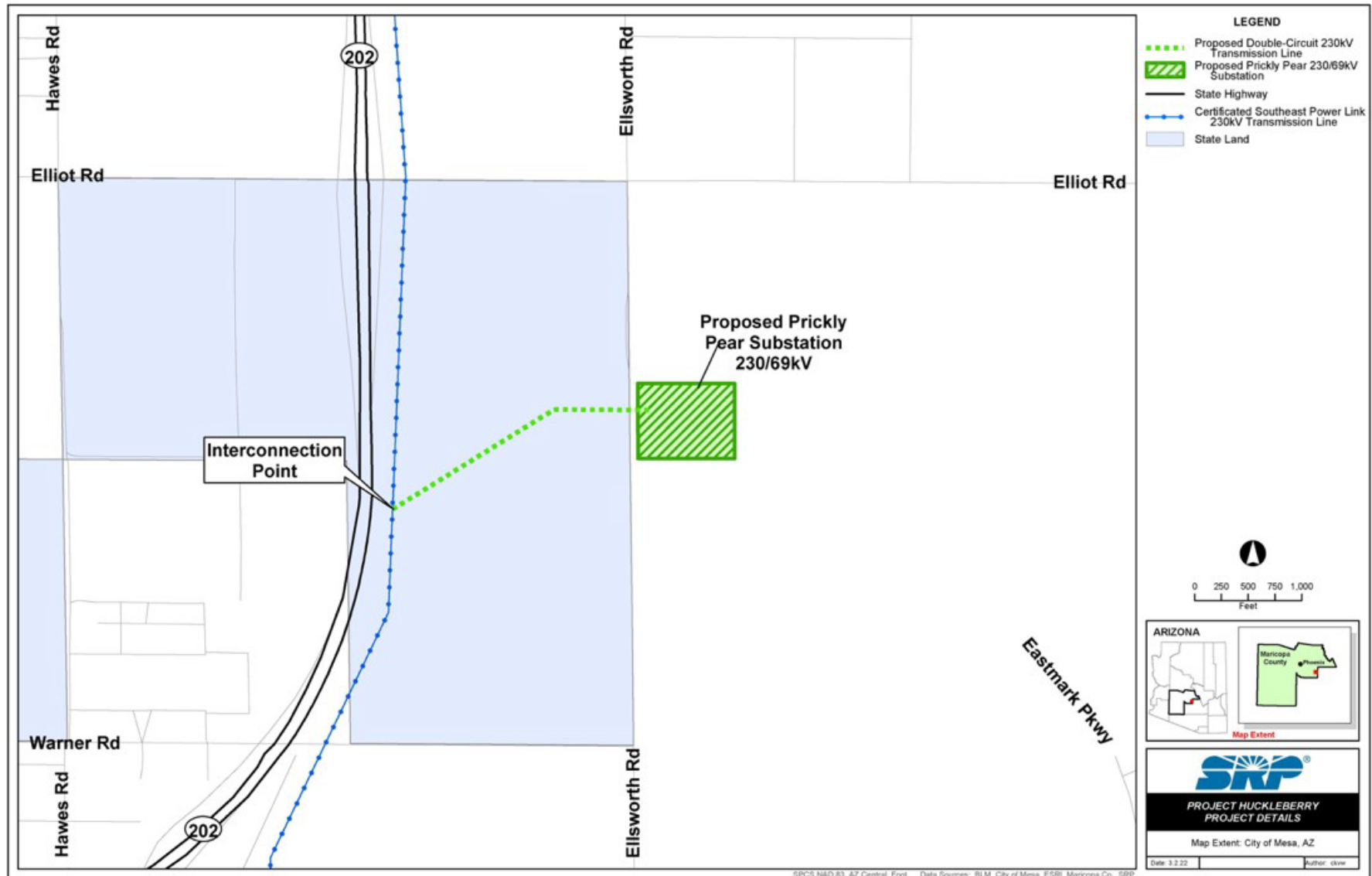
Respectfully,



Daniel Garcia, M.A., RPA
SRP Archaeologist - Senior Cultural Resource Management Specialist

CC: Mark Altaha, with enclosures

Project Huckleberry Project Components Map





Biological and Cultural Resources | PAB359
P.O. Box 52025
Phoenix, AZ 85072-2025

March 29, 2022

Mr. Gabe Aguilar
President
Mescalero Apache Tribe
PO Box 227
Mescalero, NM 88340

RE: Project Huckleberry 230 kV Transmission Line Cultural Resources
No Historic Properties Affected

Dear President Aguilar,

Salt River Project Agricultural Improvement and Power District (SRP), is proposing the construction of the Project Huckleberry 230 kilovolt (kV) Transmission Line (Project). The Project is an approximately 0.5-mile-long 230 kV double circuit transmission line and associated interconnection facilities that will provide power to the proposed Meta Mesa Data Center (Data Center) located in Mesa, Arizona (see attached map). In addition to the new transmission line, the Project involves construction of the new Prickly Pear Substation.

The Project is in Township 1 South, Range 7 East, Sections 15 and 16, Gila and Salt River Base Line and Meridian, as depicted on the Higley, Arizona U.S. Geological Survey topographic quadrangle.

The proposed 230 kV transmission line would be constructed within right-of-way across undeveloped State Trust land managed by the Arizona State Land Department (ASLD), and would connect with the approved but as-yet unbuilt Southeast Power Link transmission line. The Prickly Pear Substation would be built on private land owned by Meta currently under development as part of the larger Mesa Data Center campus.

SRP is seeking a Certificate of Environmental Compatibility (CEC) from the Arizona Corporation Commission (ACC) for this Project. Consulting parties for this Project are the State Historic Preservation Office, Ak-Chin Indian Community, Gila River Indian Community, Hopi Tribe, Mescalero Apache Tribe, Pascua Yaqui Tribe, Pueblo of Zuni, Salt River Pima-Maricopa Indian Community, Tohono O'odham Nation, Tonto Apache Tribe, White Mountain Apache Tribe, and Yavapai-Apache Nation.

As part of the ASLD right-of-way application 14-122057-00-100 in 2021, SRP retained North Wind Resource Consulting to complete an intensive pedestrian cultural resource survey of the

proposed 230 kV transmission line corridor. No cultural resources were identified during the survey, and ASLD consulted with the State Historic Preservation Office, Arizona State Museum, Gila River Indian Community, Hopi Tribe, Pascua Yaqui Tribe, Pueblo of Zuni, Salt River Pima- Maricopa Indian Community, Tonto Apache Tribe, White Mountain Apache Tribe and Yavapai- Apache Nation on the survey results pursuant to the State Historic Preservation Act (Arizona Revised Statutes 41-861 through 4-864), and the Arizona Antiquities Act (Arizona Revised Statutes 41-841 through 4-844). For the proposed Prickly Pear Substation property, the Mesa Data Center developer retained AECOM to conduct a cultural resource records review, which documented that the parcel of privately owned land had been previously surveyed intensively for cultural resources as part of the former Mesa Proving Grounds cultural resources survey and that no properties listed in or eligible for the ARHP were identified within the proposed Prickly Pear Substation property. Thus, the entire CEC Project area has been subject to cultural resources survey and no archaeological sites or historic buildings or structures would be impacted by the Project. Accordingly, the proposed 230 kV transmission line and substation would result in a finding of "no historic properties affected."

I have enclosed copies of the cultural resource documents compiled for the Project for your review. All sensitive cultural resource locational information, including maps, will be redacted from any copies of these documents available to the general public.

Please let SRP know if you have any concerns regarding cultural resources as well as any sites of traditional, religious, cultural, or historical importance to your community within the Project vicinity. SRP anticipates filing the CEC Application by May 1, 2022. Please provide comments to my attention, using the details below:

Daniel Garcia
Senior Cultural Resource Management Specialist
SRP Biological and Cultural Resource Services PAB359
P.O. Box 52025, Phoenix, AZ 85072-2025
Dan.Garcia@srpnet.com

Your correspondence will be included as part of the Project record that is filed with the ACC. Additional Project information regarding the project is available online at www.srpnet.com/electric/transmission/projects/Huckleberry. If you have any questions or would like to discuss the results of the cultural resources survey, please do not hesitate to contact me by email at dan.garcia@srpnet.com or by telephone at 602.236.2336.

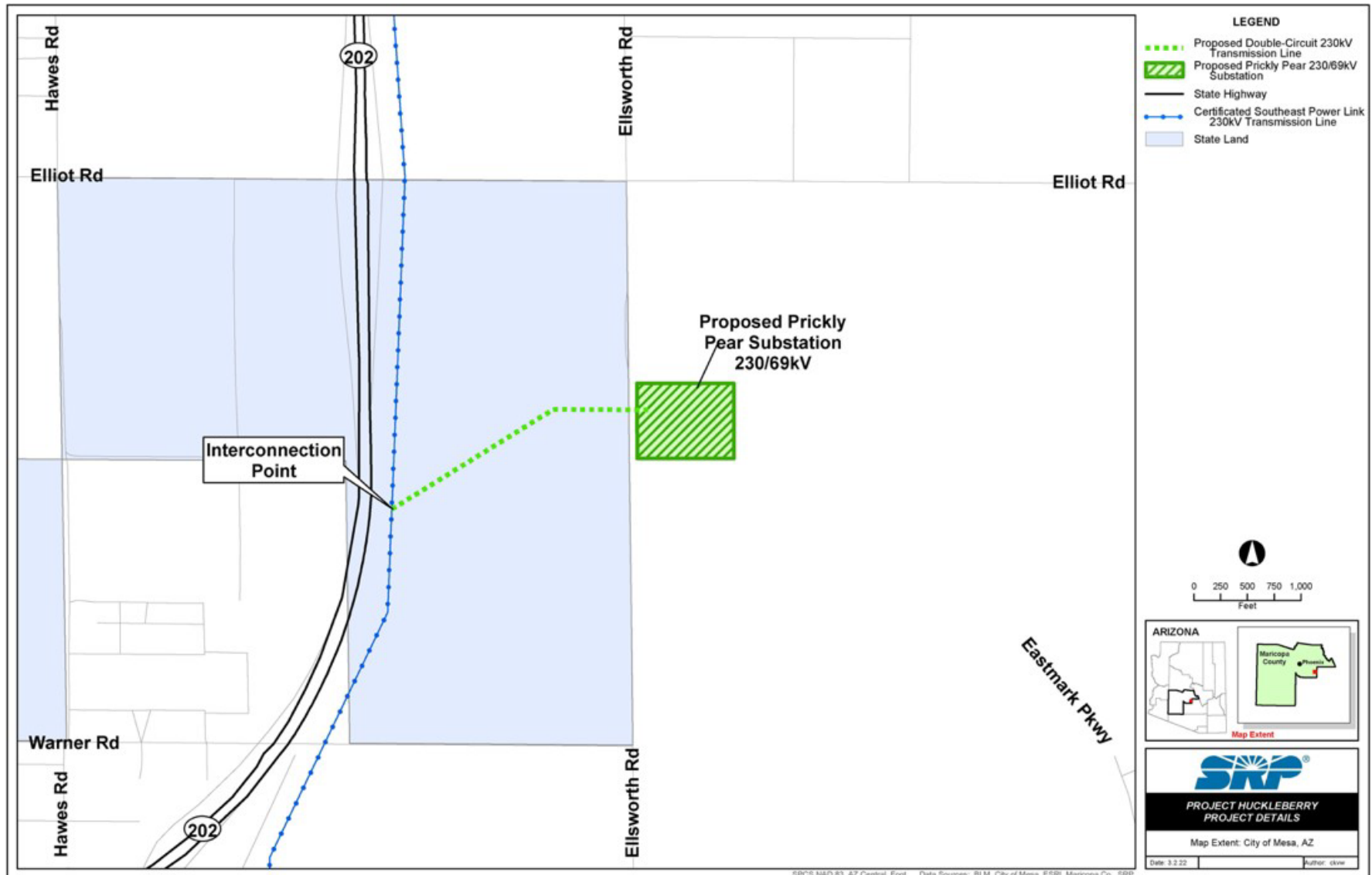
Respectfully,



Daniel Garcia, M.A., RPA
SRP Archaeologist - Senior Cultural Resource Management Specialist

CC: Holly Houghten, with enclosures

Project Huckleberry Project Components Map





Biological and Cultural Resources | PAB359
P.O. Box 52025
Phoenix, AZ 85072-2025

March 29, 2022

Mr. Calvin Johnson
Chairman
Tonto Apache Tribe
Tonto Apache Reservation #30
Payson, AZ 85541

RE: Project Huckleberry 230 kV Transmission Line Cultural Resources
No Historic Properties Affected

Dear Chairman Johnson,

Salt River Project Agricultural Improvement and Power District (SRP), is proposing the construction of the Project Huckleberry 230 kilovolt (kV) Transmission Line (Project). The Project is an approximately 0.5-mile-long 230 kV double circuit transmission line and associated interconnection facilities that will provide power to the proposed Meta Mesa Data Center (Data Center) located in Mesa, Arizona (see attached map). In addition to the new transmission line, the Project involves construction of the new Prickly Pear Substation.

The Project is in Township 1 South, Range 7 East, Sections 15 and 16, Gila and Salt River Base Line and Meridian, as depicted on the Higley, Arizona U.S. Geological Survey topographic quadrangle.

The proposed 230 kV transmission line would be constructed within right-of-way across undeveloped State Trust land managed by the Arizona State Land Department (ASLD), and would connect with the approved but as-yet unbuilt Southeast Power Link transmission line. The Prickly Pear Substation would be built on private land owned by Meta currently under development as part of the larger Mesa Data Center campus.

SRP is seeking a Certificate of Environmental Compatibility (CEC) from the Arizona Corporation Commission (ACC) for this Project. Consulting parties for this Project are the State Historic Preservation Office, Ak-Chin Indian Community, Gila River Indian Community, Hopi Tribe, Mescalero Apache Tribe, Pascua Yaqui Tribe, Pueblo of Zuni, Salt River Pima-Maricopa Indian Community, Tohono O'odham Nation, Tonto Apache Tribe, White Mountain Apache Tribe, and Yavapai-Apache Nation.

As part of the ASLD right-of-way application 14-122057-00-100 in 2021, SRP retained North Wind Resource Consulting to complete an intensive pedestrian cultural resource survey of the proposed 230 kV transmission line corridor. No cultural resources were identified during the survey, and ASLD consulted with the State Historic Preservation Office, Arizona State Museum, Gila River Indian Community, Hopi Tribe, Pascua Yaqui Tribe, Pueblo of Zuni, Salt

River Pima-Maricopa Indian Community, Tonto Apache Tribe, White Mountain Apache Tribe and Yavapai-Apache Nation on the survey results pursuant to the State Historic Preservation Act (Arizona Revised Statutes 41-861 through 4-864), and the Arizona Antiquities Act (Arizona Revised Statutes 41-841 through 4-844). For the proposed Prickly Pear Substation property, the Mesa Data Center developer retained AECOM to conduct a cultural resource records review, which documented that the parcel of privately owned land had been previously surveyed intensively for cultural resources as part of the former Mesa Proving Grounds cultural resources survey and that no properties listed in or eligible for the ARHP were identified within the proposed Prickly Pear Substation property. Thus, the entire CEC Project area has been subject to cultural resources survey and no archaeological sites or historic buildings or structures would be impacted by the Project. Accordingly, the proposed 230 kV transmission line and substation would result in a finding of "no historic properties affected."

I have enclosed copies of the cultural resource documents compiled for the Project for your review. All sensitive cultural resource locational information, including maps, will be redacted from any copies of these documents available to the general public.

Please let SRP know if you have any concerns regarding cultural resources as well as any sites of traditional, religious, cultural, or historical importance to your community within the Project vicinity. SRP anticipates filing the CEC Application by May 1, 2022. Please provide comments to my attention, using the details below:

Daniel Garcia
Senior Cultural Resource Management Specialist
SRP Biological and Cultural Resource Services PAB359
P.O. Box 52025, Phoenix, AZ 85072-2025
Dan.Garcia@srpnet.com

Your correspondence will be included as part of the Project record that is filed with the ACC. Additional Project information regarding the project is available online at www.srpnet.com/electric/transmission/projects/Huckleberry. If you have any questions or would like to discuss the results of the cultural resources survey, please do not hesitate to contact me by email at dan.garcia@srpnet.com or by telephone at 602.236.2336.

Respectfully,

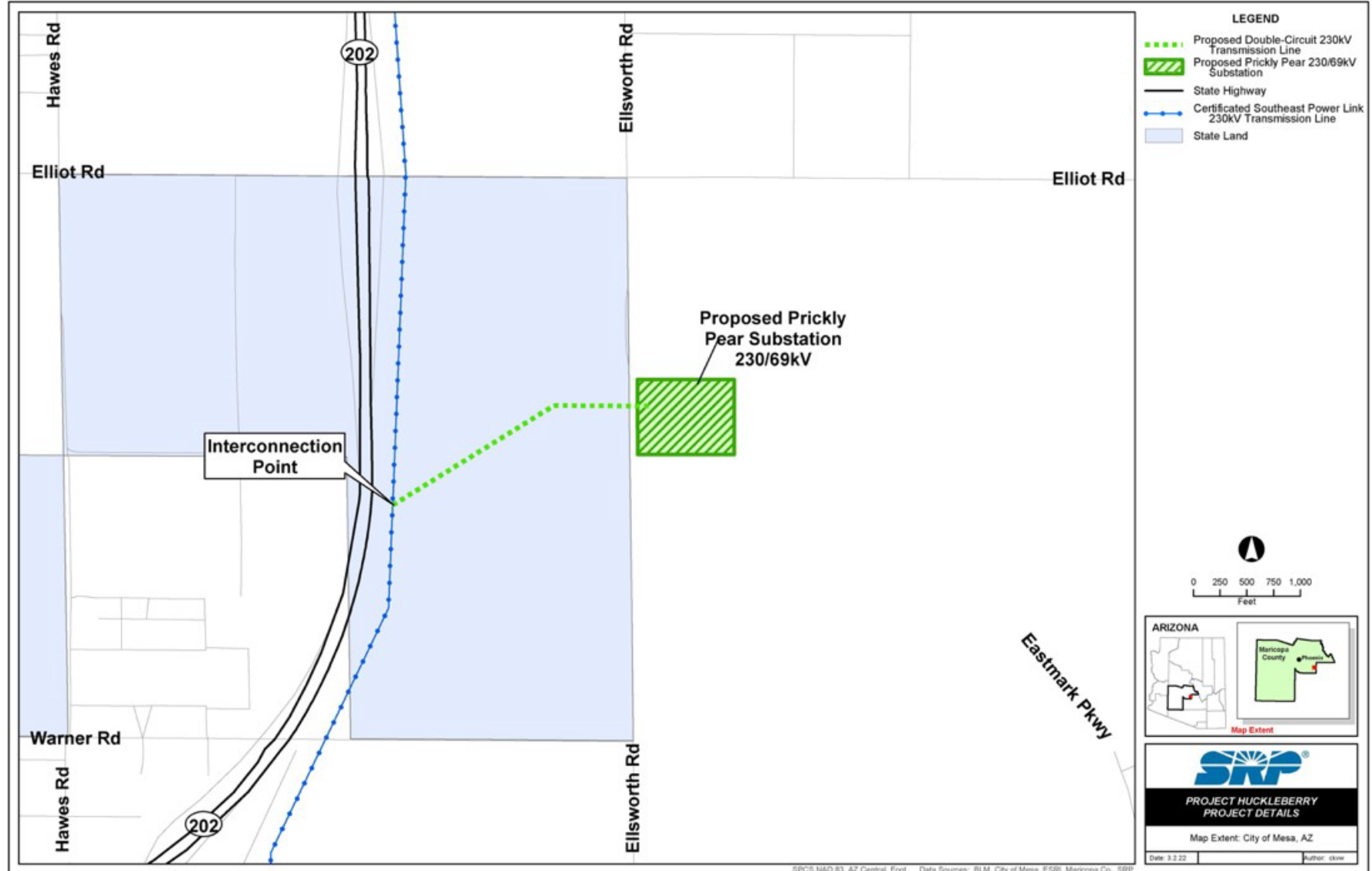


Daniel Garcia, M.A., RPA
SRP Archaeologist - Senior Cultural Resource Management Specialist

Enclosures

CC: Jeri De Cola, with enclosures

Project Huckleberry Project Components Map





Biological and Cultural Resources | PAB359
P.O. Box 52025
Phoenix, AZ 85072-2025

March 29, 2022

Timothy L. Nuvangyaoma
Chairman
Hopi Tribe
P. O. Box 123
Kykotsmovi, AZ 86039

RE: Project Huckleberry 230 kV Transmission Line Cultural Resources
No Historic Properties Affected

Dear Chairman Nuvangyaoma,

Salt River Project Agricultural Improvement and Power District (SRP), is proposing the construction of the Project Huckleberry 230 kilovolt (kV) Transmission Line (Project). The Project is an approximately 0.5-mile-long 230 kV double circuit transmission line and associated interconnection facilities that will provide power to the proposed Meta Mesa Data Center (Data Center) located in Mesa, Arizona (see attached map). In addition to the new transmission line, the Project involves construction of the new Prickly Pear Substation.

The Project is in Township 1 South, Range 7 East, Sections 15 and 16, Gila and Salt River Base Line and Meridian, as depicted on the Higley, Arizona U.S. Geological Survey topographic quadrangle.

The proposed 230 kV transmission line would be constructed within right-of-way across undeveloped State Trust land managed by the Arizona State Land Department (ASLD), and would connect with the approved but as-yet unbuilt Southeast Power Link transmission line. The Prickly Pear Substation would be built on private land owned by Meta currently under development as part of the larger Mesa Data Center campus.

SRP is seeking a Certificate of Environmental Compatibility (CEC) from the Arizona Corporation Commission (ACC) for this Project. Consulting parties for this Project are the State Historic Preservation Office, Ak-Chin Indian Community, Gila River Indian Community, Hopi Tribe, Mescalero Apache Tribe, Pascua Yaqui Tribe, Pueblo of Zuni, Salt River Pima-Maricopa Indian Community, Tohono O'odham Nation, Tonto Apache Tribe, White Mountain Apache Tribe, and Yavapai-Apache Nation.

As part of the ASLD right-of-way application 14-122057-00-100 in 2021, SRP retained North Wind Resource Consulting to complete an intensive pedestrian cultural resource survey

of the proposed 230 kV transmission line corridor. No cultural resources were identified during the survey, and ASLD consulted with the State Historic Preservation Office, Arizona State Museum, Gila River Indian Community, Hopi Tribe, Pascua Yaqui Tribe, Pueblo of Zuni, Salt River Pima- Maricopa Indian Community, Tonto Apache Tribe, White Mountain Apache Tribe and Yavapai- Apache Nation on the survey results pursuant to the State Historic Preservation Act (Arizona Revised Statutes 41-861 through 4-864), and the Arizona Antiquities Act (Arizona Revised Statutes 41-841 through 4-844). For the proposed Prickly Pear Substation property, the Mesa Data Center developer retained AECOM to conduct a cultural resource records review, which documented that the parcel of privately owned land had been previously surveyed intensively for cultural resources as part of the former Mesa Proving Grounds cultural resources survey and that no properties listed in or eligible for the ARHP were identified within the proposed Prickly Pear Substation property. Thus, the entire CEC Project area has been subject to cultural resources survey and no archaeological sites or historic buildings or structures would be impacted by the Project. Accordingly, the proposed 230 kV transmission line and substation would result in a finding of "no historic properties affected."

I have enclosed copies of the cultural resource documents compiled for the Project for your review. All sensitive cultural resource locational information, including maps, will be redacted from any copies of these documents available to the general public.

Please let SRP know if you have any concerns regarding cultural resources as well as any sites of traditional, religious, cultural, or historical importance to your community within the Project vicinity. SRP anticipates filing the CEC Application by May 1, 2022. Please provide comments to my attention, using the details below:

Daniel Garcia
Senior Cultural Resource Management Specialist
SRP Biological and Cultural Resource Services PAB359
P.O. Box 52025, Phoenix, AZ 85072-2025
Dan.Garcia@srpnet.com

Your correspondence will be included as part of the Project record that is filed with the ACC. Additional Project information regarding the project is available online at www.srpnet.com/electric/transmission/projects/Huckleberry. If you have any questions or would like to discuss the results of the cultural resources survey, please do not hesitate to contact me by email at dan.garcia@srpnet.com or by telephone at 602.236.2336.

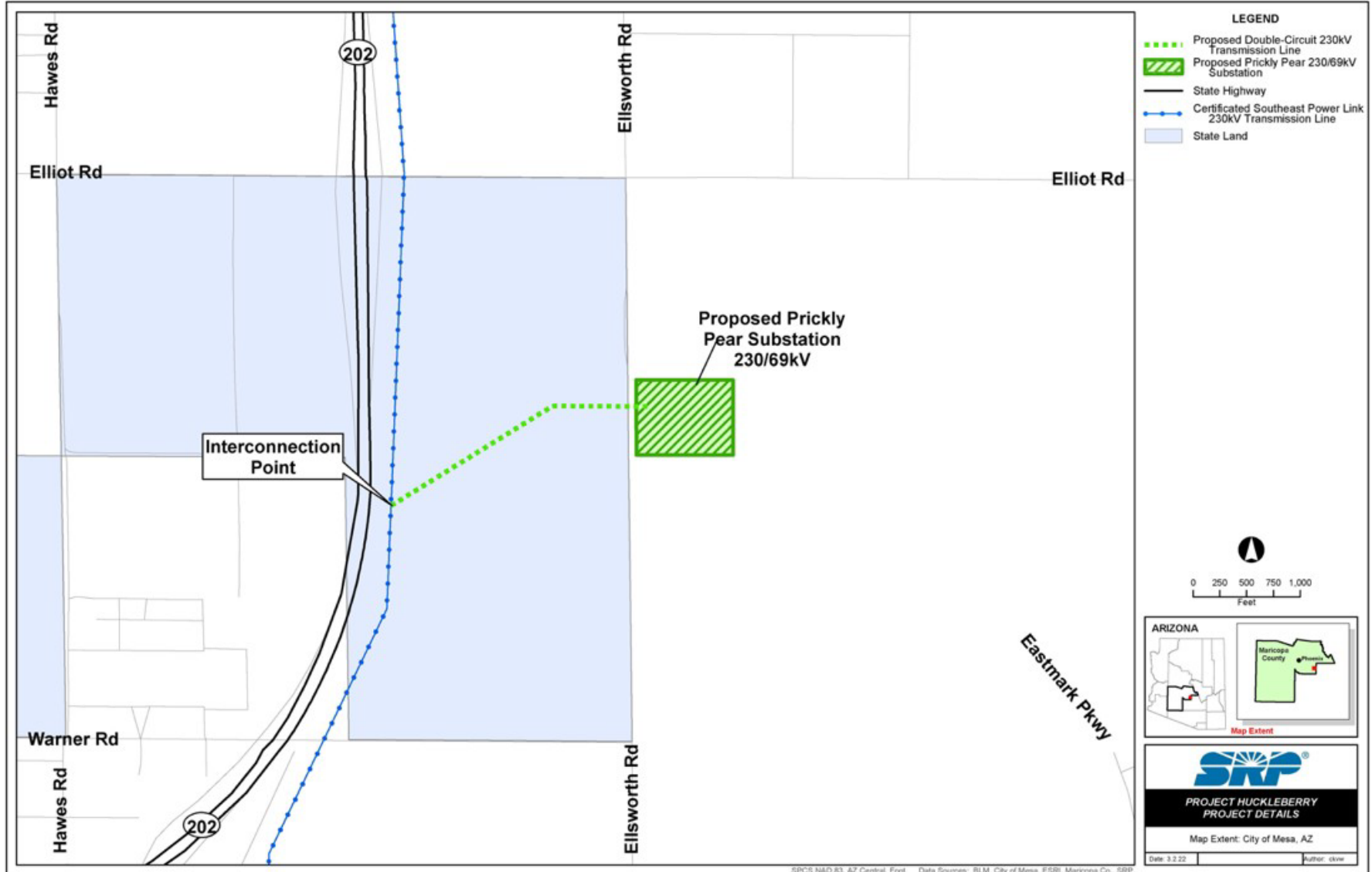
Respectfully,



Daniel Garcia, M.A., RPA
SRP Archaeologist - Senior Cultural Resource Management Specialist

CC: Stewart Koyiyumptewa, with enclosures

Project Huckleberry Project Components Map





Biological and Cultural Resources | PAB359
P.O. Box 52025
Phoenix, AZ 85072-2025

March 29, 2022

Peter Steere, Tribal Historic Preservation Officer
Jefford Francisco, Cultural Resource Specialist
Tohono O'odham Nation
Cultural Affairs Office
PO Box 837
Sells, AZ 85634

RE: Project Huckleberry 230 kV Transmission Line Cultural Resources
No Historic Properties Affected

Dear Messrs. Steere and Francisco,

Salt River Project Agricultural Improvement and Power District (SRP), is proposing the construction of the Project Huckleberry 230 kilovolt (kV) Transmission Line (Project). The Project is an approximately 0.5-mile-long 230 kV double circuit transmission line and associated interconnection facilities that will provide power to the proposed Meta Mesa Data Center (Data Center) located in Mesa, Arizona (see attached map). In addition to the new transmission line, the Project involves construction of the new Prickly Pear Substation.

The Project is in Township 1 South, Range 7 East, Sections 15 and 16, Gila and Salt River Base Line and Meridian, as depicted on the Higley, Arizona U.S. Geological Survey topographic quadrangle.

The proposed 230 kV transmission line would be constructed within right-of-way across undeveloped State Trust land managed by the Arizona State Land Department (ASLD), and would connect with the approved but as-yet unbuilt Southeast Power Link transmission line. The Prickly Pear Substation would be built on private land owned by Meta currently under development as part of the larger Mesa Data Center campus.

SRP is seeking a Certificate of Environmental Compatibility (CEC) from the Arizona Corporation Commission (ACC) for this Project. Consulting parties for this Project are the State Historic Preservation Office, Ak-Chin Indian Community, Gila River Indian Community, Hopi Tribe, Mescalero Apache Tribe, Pascua Yaqui Tribe, Pueblo of Zuni, Salt River Pima-Maricopa Indian Community, Tohono O'odham Nation, Tonto Apache Tribe, White Mountain Apache Tribe, and Yavapai-Apache Nation.

As part of the ASLD right-of-way application 14-122057-00-100 in 2021, SRP retained North Wind Resource Consulting to complete an intensive pedestrian cultural resource survey of the proposed 230 kV transmission line corridor. No cultural resources were identified during the survey, and ASLD consulted with the State Historic Preservation Office, Arizona State Museum, Gila River Indian Community, Hopi Tribe, Pascua Yaqui Tribe, Pueblo of Zuni, Salt River Pima-Maricopa Indian Community, Tonto Apache Tribe, White Mountain Apache Tribe and Yavapai-Apache Nation on the survey results pursuant to the State Historic Preservation Act (Arizona Revised Statutes 41-861 through 4-864), and the Arizona Antiquities Act (Arizona Revised Statutes 41-841 through 4-844). For the proposed Prickly Pear Substation property, the Mesa Data Center developer retained AECOM to conduct a cultural resource records review, which documented that the parcel of privately owned land had been previously surveyed intensively for cultural resources as part of the former Mesa Proving Grounds cultural resources survey and that no properties listed in or eligible for the ARHP were identified within the proposed Prickly Pear Substation property. Thus, the entire CEC Project area has been subject to cultural resources survey and no archaeological sites or historic buildings or structures would be impacted by the Project. Accordingly, the proposed 230 kV transmission line and substation would result in a finding of "no historic properties affected."

I have enclosed copies of the cultural resource documents compiled for the Project for your review. All sensitive cultural resource locational information, including maps, will be redacted from any copies of these documents available to the general public.

Please let SRP know if you have any concerns regarding cultural resources as well as any sites of traditional, religious, cultural, or historical importance to your community within the Project vicinity. SRP anticipates filing the CEC Application by May 1, 2022. Please provide comments to my attention, using the details below:

Daniel Garcia
Senior Cultural Resource Management Specialist
SRP Biological and Cultural Resource Services PAB359
P.O. Box 52025, Phoenix, AZ 85072-2025
Dan.Garcia@srpnet.com

Your correspondence will be included as part of the Project record that is filed with the ACC. Additional Project information regarding the project is available online at www.srpnet.com/electric/transmission/projects/Huckleberry. If you have any questions or would like to discuss the results of the cultural resources survey, please do not hesitate to contact me by email at dan.garcia@srpnet.com or by telephone at 602.236.2336.

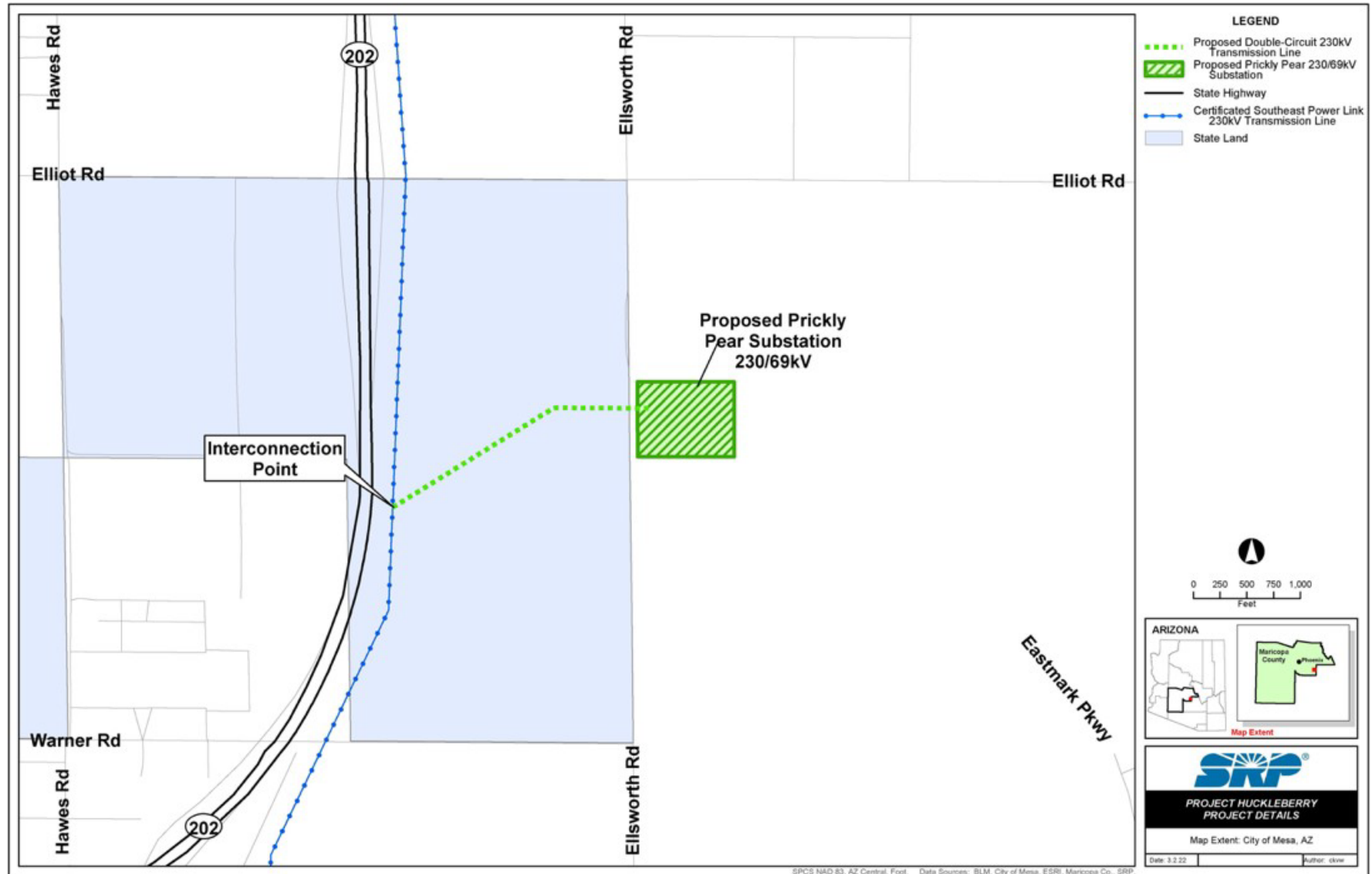
Respectfully,



Daniel Garcia, M.A., RPA
SRP Archaeologist - Senior Cultural Resource Management Specialist

Enclosures

Project Huckleberry Project Components Map





Biological and Cultural Resources | PAB359
P.O. Box 52025
Phoenix, AZ 85072-2025

March 29, 2022

Mr. Robert Miguel
Chairman
Ak-Chin Indian Community
42507 W. Peters & Nall Rd
Maricopa, AZ 85138

Sent via email to: RMiguel@ak-chin.nsn.us

RE: Project Huckleberry 230 kV Transmission Line Cultural Resources
No Historic Properties Affected

Dear Chairman Miguel,

Salt River Project Agricultural Improvement and Power District (SRP), is proposing the construction of the Project Huckleberry 230 kilovolt (kV) Transmission Line (Project). The Project is an approximately 0.5-mile-long 230 kV double circuit transmission line and associated interconnection facilities that will provide power to the proposed Meta Mesa Data Center (Data Center) located in Mesa, Arizona (see attached map). In addition to the new transmission line, the Project involves construction of the new Prickly Pear Substation.

The Project is in Township 1 South, Range 7 East, Sections 15 and 16, Gila and Salt River Base Line and Meridian, as depicted on the Higley, Arizona U.S. Geological Survey topographic quadrangle.

The proposed 230 kV transmission line would be constructed within right-of-way across undeveloped State Trust land managed by the Arizona State Land Department (ASLD), and would connect with the approved but as-yet unbuilt Southeast Power Link transmission line. The Prickly Pear Substation would be built on private land owned by Meta currently under development as part of the larger Mesa Data Center campus.

SRP is seeking a Certificate of Environmental Compatibility (CEC) from the Arizona Corporation Commission (ACC) for this Project. Consulting parties for this Project are the State Historic Preservation Office, Ak-Chin Indian Community, Gila River Indian Community, Hopi Tribe, Mescalero Apache Tribe, Pascua Yaqui Tribe, Pueblo of Zuni, Salt River Pima-Maricopa Indian Community, Tohono O'odham Nation, Tonto Apache Tribe, White Mountain Apache Tribe, and Yavapai-Apache Nation.

As part of the ASLD right-of-way application 14-122057-00-100 in 2021, SRP retained North Wind Resource Consulting to complete an intensive pedestrian cultural resource survey of the proposed 230 kV transmission line corridor. No cultural resources were identified

during the survey, and ASLD consulted with the State Historic Preservation Office, Arizona State Museum, Gila River Indian Community, Hopi Tribe, Pascua Yaqui Tribe, Pueblo of Zuni, Salt River Pima-Maricopa Indian Community, Tonto Apache Tribe, White Mountain Apache Tribe and Yavapai- Apache Nation on the survey results pursuant to the State Historic Preservation Act (Arizona Revised Statutes 41-861 through 4-864), and the Arizona Antiquities Act (Arizona Revised Statutes 41-841 through 4-844). For the proposed Prickly Pear Substation property, the Mesa Data Center developer retained AECOM to conduct a cultural resource records review, which documented that the parcel of privately owned land had been previously surveyed intensively for cultural resources as part of the former Mesa Proving Grounds cultural resources survey and that no properties listed in or eligible for the ARHP were identified within the proposed Prickly Pear Substation property. Thus, the entire CEC Project area has been subject to cultural resources survey and no archaeological sites or historic buildings or structures would be impacted by the Project. Accordingly, the proposed 230 kV transmission line and substation would result in a finding of "no historic properties affected."

I have enclosed copies of the cultural resource documents compiled for the Project for your review. All sensitive cultural resource locational information, including maps, will be redacted from any copies of these documents available to the general public.

Please let SRP know if you have any concerns regarding cultural resources as well as any sites of traditional, religious, cultural, or historical importance to your community within the Project vicinity. SRP anticipates filing the CEC Application by May 1, 2022. Please provide comments to my attention, using the details below:

Daniel Garcia
Senior Cultural Resource Management Specialist
SRP Biological and Cultural Resource Services PAB359
P.O. Box 52025, Phoenix, AZ 85072-2025
Dan.Garcia@srpnet.com

Your correspondence will be included as part of the Project record that is filed with the ACC. Additional Project information regarding the project is available online at www.srpnet.com/electric/transmission/projects/Huckleberry. If you have any questions or would like to discuss the results of the cultural resources survey, please do not hesitate to contact me by email at dan.garcia@srpnet.com or by telephone at 602.236.2336.

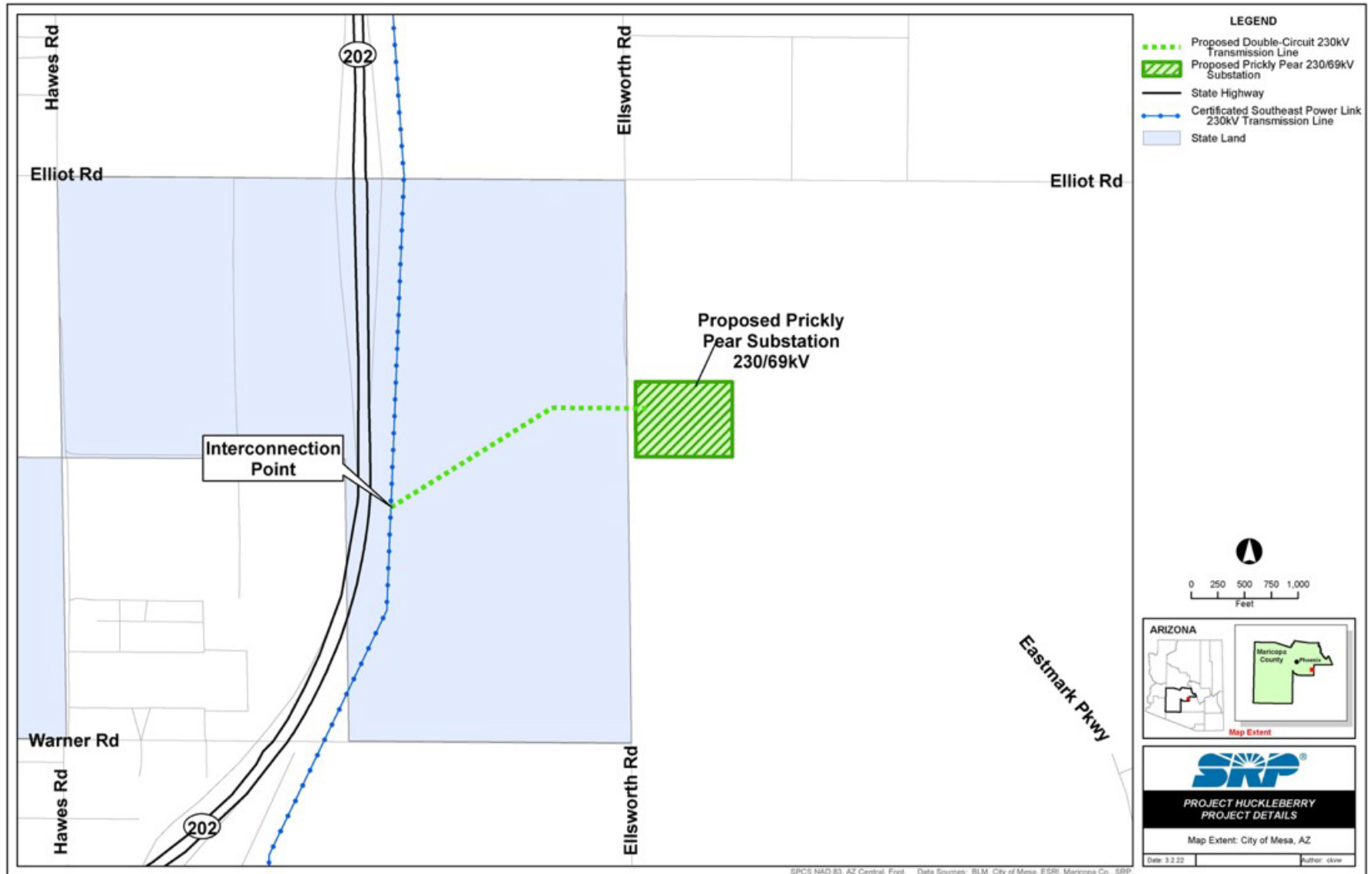
Respectfully,



Daniel Garcia, M.A., RPA
SRP Archaeologist - Senior Cultural Resource Management Specialist

CC: Elaine Peters, with enclosures

Project Huckleberry Project Components Map





Biological and Cultural Resources | PAB359
P.O. Box 52025
Phoenix, AZ 85072-2025

March 29, 2022

Stephen Roe Lewis
Governor
Gila River Indian Community
PO Box 97
Sacaton, AZ, 85147

RE: Project Huckleberry 230 kV Transmission Line Cultural Resources
No Historic Properties Affected

Dear Governor Lewis,

Salt River Project Agricultural Improvement and Power District (SRP), is proposing the construction of the Project Huckleberry 230 kilovolt (kV) Transmission Line (Project). The Project is an approximately 0.5-mile-long 230 kV double circuit transmission line and associated interconnection facilities that will provide power to the proposed Meta Mesa Data Center (Data Center) located in Mesa, Arizona (see attached map). In addition to the new transmission line, the Project involves construction of the new Prickly Pear Substation.

The Project is in Township 1 South, Range 7 East, Sections 15 and 16, Gila and Salt River Base Line and Meridian, as depicted on the Higley, Arizona U.S. Geological Survey topographic quadrangle.

The proposed 230 kV transmission line would be constructed within right-of-way across undeveloped State Trust land managed by the Arizona State Land Department (ASLD), and would connect with the approved but as-yet unbuilt Southeast Power Link transmission line. The Prickly Pear Substation would be built on private land owned by Meta currently under development as part of the larger Mesa Data Center campus.

SRP is seeking a Certificate of Environmental Compatibility (CEC) from the Arizona Corporation Commission (ACC) for this Project. Consulting parties for this Project are the State Historic Preservation Office, Ak-Chin Indian Community, Gila River Indian Community, Hopi Tribe, Mescalero Apache Tribe, Pascua Yaqui Tribe, Pueblo of Zuni, Salt River Pima-Maricopa Indian Community, Tohono O'odham Nation, Tonto Apache Tribe, White Mountain Apache Tribe, and Yavapai-Apache Nation.

As part of the ASLD right-of-way application 14-122057-00-100 in 2021, SRP retained North Wind Resource Consulting to complete an intensive pedestrian cultural resource survey of the proposed 230 kV transmission line corridor. No cultural resources were identified during the survey, and ASLD consulted with the State Historic Preservation Office, Arizona State Museum, Gila River Indian Community, Hopi Tribe, Pascua Yaqui Tribe,

Pueblo of Zuni, Salt River Pima-Maricopa Indian Community, Tonto Apache Tribe, White Mountain Apache Tribe and Yavapai- Apache Nation on the survey results pursuant to the State Historic Preservation Act (Arizona Revised Statutes 41-861 through 4-864), and the Arizona Antiquities Act (Arizona Revised Statutes 41-841 through 4-844). For the proposed Prickly Pear Substation property, the Mesa Data Center developer retained AECOM to conduct a cultural resource records review, which documented that the parcel of privately owned land had been previously surveyed intensively for cultural resources as part of the former Mesa Proving Grounds cultural resources survey and that no properties listed in or eligible for the ARHP were identified within the proposed Prickly Pear Substation property. Thus, the entire CEC Project area has been subject to cultural resources survey and no archaeological sites or historic buildings or structures would be impacted by the Project. Accordingly, the proposed 230 kV transmission line and substation would result in a finding of "no historic properties affected."

I have enclosed copies of the cultural resource documents compiled for the Project for your review. All sensitive cultural resource locational information, including maps, will be redacted from any copies of these documents available to the general public.

Please let SRP know if you have any concerns regarding cultural resources as well as any sites of traditional, religious, cultural, or historical importance to your community within the Project vicinity. SRP anticipates filing the CEC Application by May 1, 2022. Please provide comments to my attention, using the details below:

Daniel Garcia
Senior Cultural Resource Management Specialist
SRP Biological and Cultural Resource Services PAB359
P.O. Box 52025, Phoenix, AZ 85072-2025
Dan.Garcia@srpnet.com

Your correspondence will be included as part of the Project record that is filed with the ACC. Additional Project information regarding the project is available online at www.srpnet.com/electric/transmission/projects/Huckleberry. If you have any questions or would like to discuss the results of the cultural resources survey, please do not hesitate to contact me by email at dan.garcia@srpnet.com or by telephone at 602.236.2336.

Respectfully,

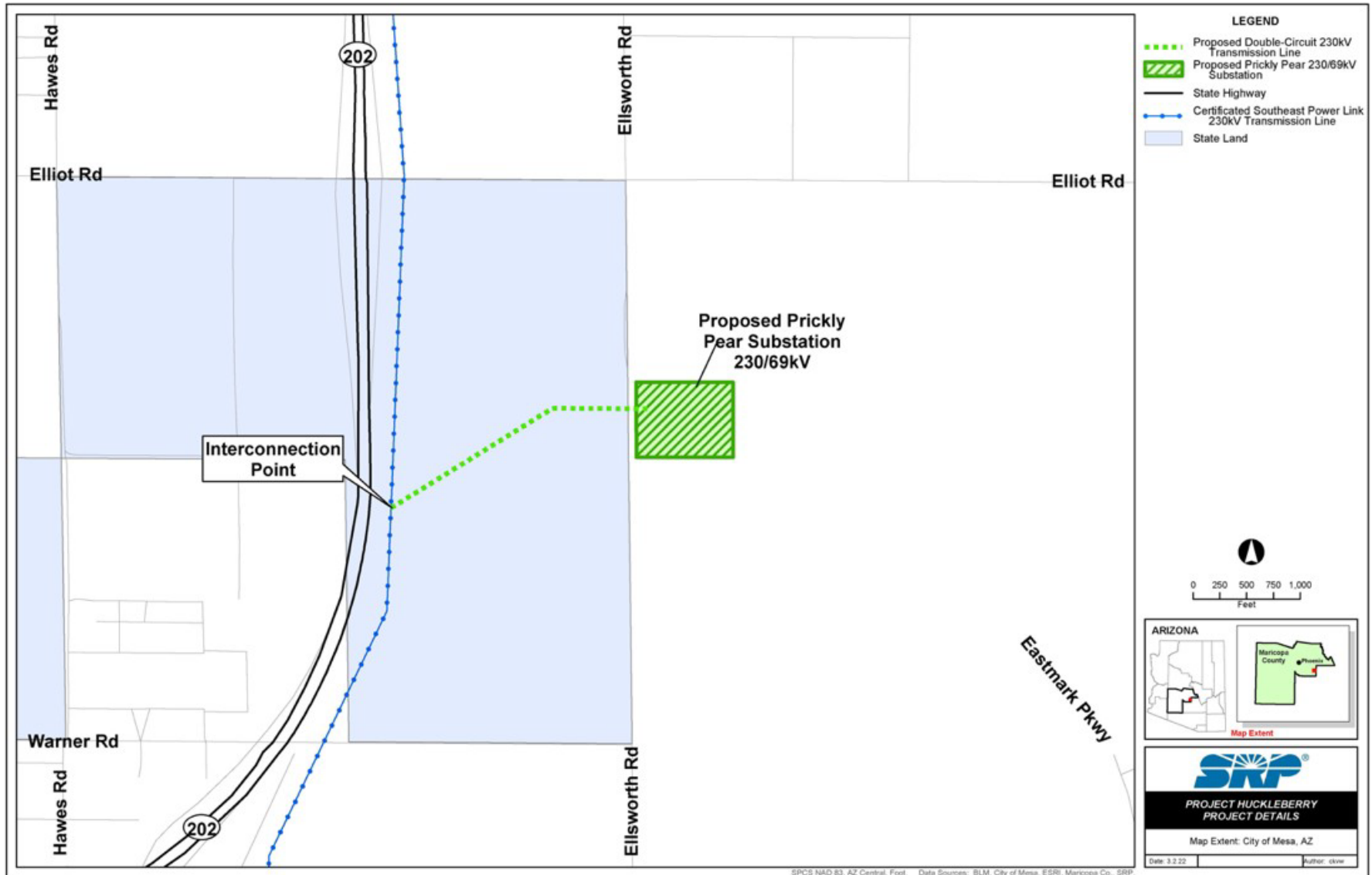


Daniel Garcia, M.A., RPA
SRP Archaeologist - Senior Cultural Resource Management Specialist

Enclosures

CC: Larry Benallie, Jr, via email with enclosures
Barnaby Lewis, via email with enclosures
Kyle Woodson, via email with enclosures

Project Huckleberry Project Components Map





Biological and Cultural Resources | PAB359
P.O. Box 52025
Phoenix, AZ 85072-2025

March 29, 2022

Mr. Val R. Panteah
Governor
Pueblo of Zuni
PO Box 339
Zuni, NM 87327

RE: Project Huckleberry 230 kV Transmission Line Cultural Resources
No Historic Properties Affected

Dear Governor Panteah,

Salt River Project Agricultural Improvement and Power District (SRP), is proposing the construction of the Project Huckleberry 230 kilovolt (kV) Transmission Line (Project). The Project is an approximately 0.5-mile-long 230 kV double circuit transmission line and associated interconnection facilities that will provide power to the proposed Meta Mesa Data Center (Data Center) located in Mesa, Arizona (see attached map). In addition to the new transmission line, the Project involves construction of the new Prickly Pear Substation.

The Project is in Township 1 South, Range 7 East, Sections 15 and 16, Gila and Salt River Base Line and Meridian, as depicted on the Higley, Arizona U.S. Geological Survey topographic quadrangle.

The proposed 230 kV transmission line would be constructed within right-of-way across undeveloped State Trust land managed by the Arizona State Land Department (ASLD), and would connect with the approved but as-yet unbuilt Southeast Power Link transmission line. The Prickly Pear Substation would be built on private land owned by Meta currently under development as part of the larger Mesa Data Center campus.

SRP is seeking a Certificate of Environmental Compatibility (CEC) from the Arizona Corporation Commission (ACC) for this Project. Consulting parties for this Project are the State Historic Preservation Office, Ak-Chin Indian Community, Gila River Indian Community, Hopi Tribe, Mescalero Apache Tribe, Pascua Yaqui Tribe, Pueblo of Zuni, Salt River Pima-Maricopa Indian Community, Tohono O'odham Nation, Tonto Apache Tribe, White Mountain Apache Tribe, and Yavapai-Apache Nation.

As part of the ASLD right-of-way application 14-122057-00-100 in 2021, SRP retained North Wind Resource Consulting to complete an intensive pedestrian cultural resource survey of the proposed 230 kV transmission line corridor. No cultural resources were identified during the survey, and ASLD consulted with the State Historic Preservation Office, Arizona State Museum,

Gila River Indian Community, Hopi Tribe, Pascua Yaqui Tribe, Pueblo of Zuni, Salt River Pima-Maricopa Indian Community, Tonto Apache Tribe, White Mountain Apache Tribe and Yavapai-Apache Nation on the survey results pursuant to the State Historic Preservation Act (Arizona Revised Statutes 41-861 through 4-864), and the Arizona Antiquities Act (Arizona Revised Statutes 41-841 through 4-844). For the proposed Prickly Pear Substation property, the Mesa Data Center developer retained AECOM to conduct a cultural resource records review, which documented that the parcel of privately owned land had been previously surveyed intensively for cultural resources as part of the former Mesa Proving Grounds cultural resources survey and that no properties listed in or eligible for the ARHP were identified within the proposed Prickly Pear Substation property. Thus, the entire CEC Project area has been subject to cultural resources survey and no archaeological sites or historic buildings or structures would be impacted by the Project. Accordingly, the proposed 230 kV transmission line and substation would result in a finding of "no historic properties affected."

I have enclosed copies of the cultural resource documents compiled for the Project for your review. All sensitive cultural resource locational information, including maps, will be redacted from any copies of these documents available to the general public.

Please let SRP know if you have any concerns regarding cultural resources as well as any sites of traditional, religious, cultural, or historical importance to your community within the Project vicinity. SRP anticipates filing the CEC Application by May 1, 2022. Please provide comments to my attention, using the details below:

Daniel Garcia
Senior Cultural Resource Management Specialist
SRP Biological and Cultural Resource Services PAB359
P.O. Box 52025, Phoenix, AZ 85072-2025
Dan.Garcia@srpnet.com

Your correspondence will be included as part of the Project record that is filed with the ACC. Additional Project information regarding the project is available online at www.srpnet.com/electric/transmission/projects/Huckleberry. If you have any questions or would like to discuss the results of the cultural resources survey, please do not hesitate to contact me by email at dan.garcia@srpnet.com or by telephone at 602.236.2336.

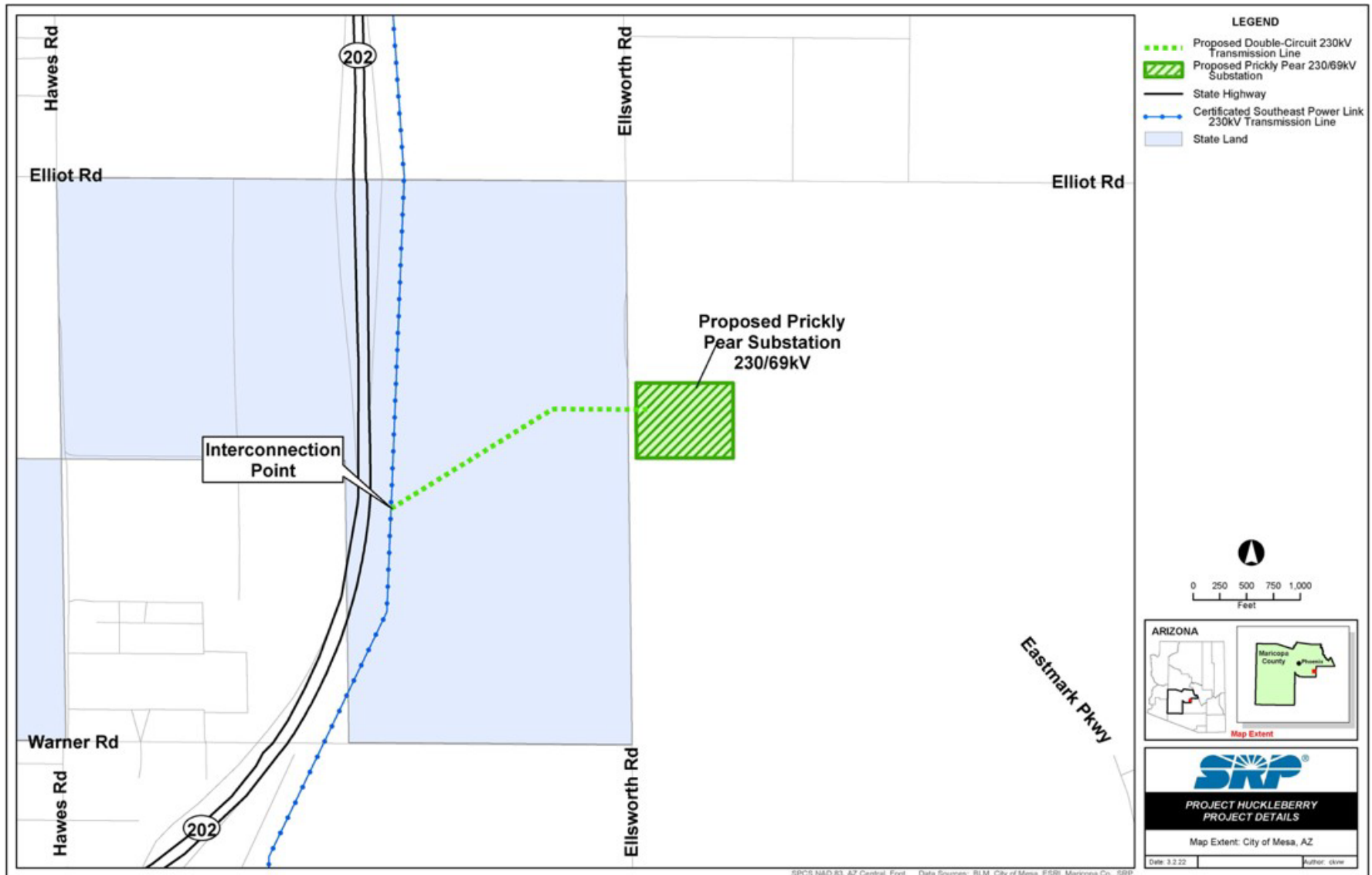
Respectfully,



Daniel Garcia, M.A., RPA
SRP Archaeologist - Senior Cultural Resource Management Specialist

CC: Kurt Dongoske, with enclosures

Project Huckleberry Project Components Map





Biological and Cultural Resources | PAB359
P.O. Box 52025
Phoenix, AZ 85072-2025

March 29, 2022

President Martin Harvier
Salt River Pima-Maricopa Indian Community
10005 E. Osborn Road
Scottsdale, AZ 85256

RE: Project Huckleberry 230 kV Transmission Line Cultural Resources
No Historic Properties Affected

Dear President Harvier,

Salt River Project Agricultural Improvement and Power District (SRP), is proposing the construction of the Project Huckleberry 230 kilovolt (kV) Transmission Line (Project). The Project is an approximately 0.5-mile-long 230 kV double circuit transmission line and associated interconnection facilities that will provide power to the proposed Meta Mesa Data Center (Data Center) located in Mesa, Arizona (see attached map). In addition to the new transmission line, the Project involves construction of the new Prickly Pear Substation.

The Project is in Township 1 South, Range 7 East, Sections 15 and 16, Gila and Salt River Base Line and Meridian, as depicted on the Higley, Arizona U.S. Geological Survey topographic quadrangle.

The proposed 230 kV transmission line would be constructed within right-of-way across undeveloped State Trust land managed by the Arizona State Land Department (ASLD), and would connect with the approved but as-yet unbuilt Southeast Power Link transmission line. The Prickly Pear Substation would be built on private land owned by Meta currently under development as part of the larger Mesa Data Center campus.

SRP is seeking a Certificate of Environmental Compatibility (CEC) from the Arizona Corporation Commission (ACC) for this Project. Consulting parties for this Project are the State Historic Preservation Office, Ak-Chin Indian Community, Gila River Indian Community, Hopi Tribe, Mescalero Apache Tribe, Pascua Yaqui Tribe, Pueblo of Zuni, Salt River Pima-Maricopa Indian Community, Tohono O'odham Nation, Tonto Apache Tribe, White Mountain Apache Tribe, and Yavapai-Apache Nation.

As part of the ASLD right-of-way application 14-122057-00-100 in 2021, SRP retained North Wind Resource Consulting to complete an intensive pedestrian cultural resource survey of the proposed 230 kV transmission line corridor. No cultural resources were identified

during the survey, and ASLD consulted with the State Historic Preservation Office, Arizona State Museum, Gila River Indian Community, Hopi Tribe, Pascua Yaqui Tribe, Pueblo of Zuni, Salt River Pima- Maricopa Indian Community, Tonto Apache Tribe, White Mountain Apache Tribe and Yavapai- Apache Nation on the survey results pursuant to the State Historic Preservation Act (Arizona Revised Statutes 41-861 through 4-864), and the Arizona Antiquities Act (Arizona Revised Statutes 41-841 through 4-844). For the proposed Prickly Pear Substation property, the Mesa Data Center developer retained AECOM to conduct a cultural resource records review, which documented that the parcel of privately owned land had been previously surveyed intensively for cultural resources as part of the former Mesa Proving Grounds cultural resources survey and that no properties listed in or eligible for the ARHP were identified within the proposed Prickly Pear Substation property. Thus, the entire CEC Project area has been subject to cultural resources survey and no archaeological sites or historic buildings or structures would be impacted by the Project. Accordingly, the proposed 230 kV transmission line and substation would result in a finding of "no historic properties affected."

I have enclosed copies of the cultural resource documents compiled for the Project for your review. All sensitive cultural resource locational information, including maps, will be redacted from any copies of these documents available to the general public.

Please let SRP know if you have any concerns regarding cultural resources as well as any sites of traditional, religious, cultural, or historical importance to your community within the Project vicinity. SRP anticipates filing the CEC Application by May 1, 2022. Please provide comments to my attention, using the details below:

Daniel Garcia
Senior Cultural Resource Management Specialist
SRP Biological and Cultural Resource Services PAB359
P.O. Box 52025, Phoenix, AZ 85072-2025
Dan.Garcia@srpnet.com

Your correspondence will be included as part of the Project record that is filed with the ACC. Additional Project information regarding the project is available online at www.srpnet.com/electric/transmission/projects/Huckleberry. If you have any questions or would like to discuss the results of the cultural resources survey, please do not hesitate to contact me by email at dan.garcia@srpnet.com or by telephone at 602.236.2336.

Respectfully,

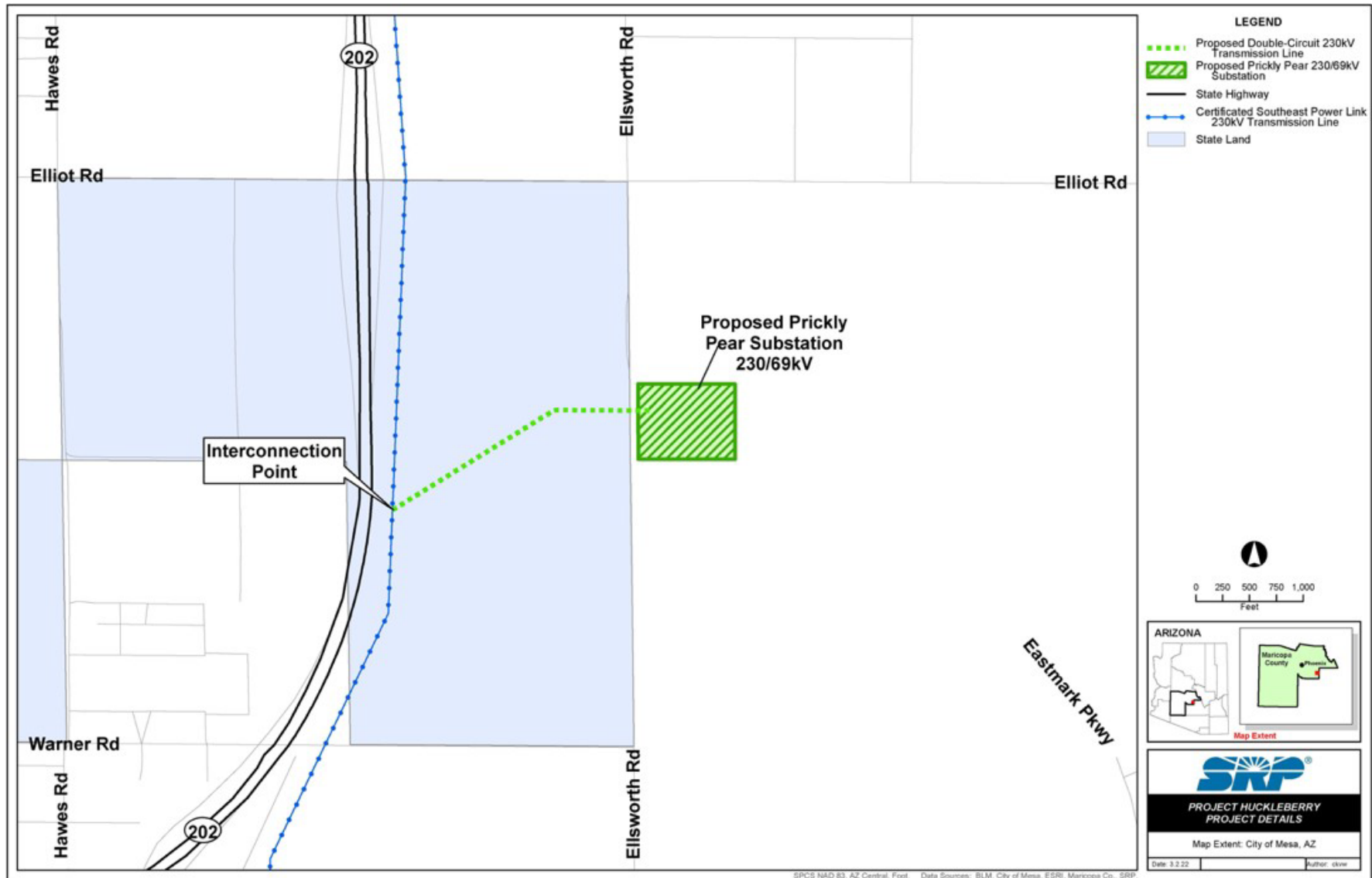


Daniel Garcia, M.A., RPA
SRP Archaeologist - Senior Cultural Resource Management Specialist

Enclosures

CC: Shane Anton, via email with enclosures
Martha Martinez, via email with enclosures
Angela Garcia-Lewis, via email with enclosures

Project Huckleberry Project Components Map





Biological and Cultural Resources | PAB359
P.O. Box 52025
Phoenix, AZ 85072-2025

March 28, 2022

Chris Coder
Tribal Archaeologist
Yavapai-Apache Nation
2400 W. Datsi Street
Camp Verde, AZ 86322

RE: Project Huckleberry 230 kV Transmission Line Cultural Resources
No Historic Properties Affected

Dear Mr. Coder,

Salt River Project Agricultural Improvement and Power District (SRP), is proposing the construction of the Project Huckleberry 230 kilovolt (kV) Transmission Line (Project). The Project is an approximately 0.5-mile-long 230 kV double circuit transmission line and associated interconnection facilities that will provide power to the proposed Meta Mesa Data Center (Data Center) located in Mesa, Arizona (see attached map). In addition to the new transmission line, the Project involves construction of the new Prickly Pear Substation.

The Project is in Township 1 South, Range 7 East, Sections 15 and 16, Gila and Salt River Base Line and Meridian, as depicted on the Higley, Arizona U.S. Geological Survey topographic quadrangle.

The proposed 230 kV transmission line would be constructed within right-of-way across undeveloped State Trust land managed by the Arizona State Land Department (ASLD), and would connect with the approved but as-yet unbuilt Southeast Power Link transmission line. The Prickly Pear Substation would be built on private land owned by Meta currently under development as part of the larger Mesa Data Center campus.

SRP is seeking a Certificate of Environmental Compatibility (CEC) from the Arizona Corporation Commission (ACC) for this Project. Consulting parties for this Project are the State Historic Preservation Office, Ak-Chin Indian Community, Gila River Indian Community, Hopi Tribe, Mescalero Apache Tribe, Pascua Yaqui Tribe, Pueblo of Zuni, Salt River Pima-Maricopa Indian Community, Tohono O'odham Nation, Tonto Apache Tribe, White Mountain Apache Tribe, and Yavapai-Apache Nation.

As part of the ASLD right-of-way application 14-122057-00-100 in 2021, SRP retained North Wind Resource Consulting to complete an intensive pedestrian cultural resource survey of the proposed 230 kV transmission line corridor. No cultural resources were identified during the survey, and ASLD consulted with the State Historic Preservation Office, Arizona State Museum,

Gila River Indian Community, Hopi Tribe, Pascua Yaqui Tribe, Pueblo of Zuni, Salt River Pima-Maricopa Indian Community, Tonto Apache Tribe, White Mountain Apache Tribe and Yavapai-Apache Nation on the survey results pursuant to the State Historic Preservation Act (Arizona Revised Statutes 41-861 through 4-864), and the Arizona Antiquities Act (Arizona Revised Statutes 41-841 through 4-844). For the proposed Prickly Pear Substation property, the Mesa Data Center developer retained AECOM to conduct a cultural resource records review, which documented that the parcel of privately owned land had been previously surveyed intensively for cultural resources as part of the former Mesa Proving Grounds cultural resources survey and that no properties listed in or eligible for the ARHP were identified within the proposed Prickly Pear Substation property. Thus, the entire CEC Project area has been subject to cultural resources survey and no archaeological sites or historic buildings or structures would be impacted by the Project. Accordingly, the proposed 230 kV transmission line and substation would result in a finding of "no historic properties affected."

I have enclosed copies of the cultural resource documents compiled for the Project for your review. All sensitive cultural resource locational information, including maps, will be redacted from any copies of these documents available to the general public.

Please let SRP know if you have any concerns regarding cultural resources as well as any sites of traditional, religious, cultural, or historical importance to your community within the Project vicinity. SRP anticipates filing the CEC Application by May 1, 2022. Please provide comments to my attention, using the details below:

Daniel Garcia
Senior Cultural Resource Management Specialist
SRP Biological and Cultural Resource Services PAB359
P.O. Box 52025, Phoenix, AZ 85072-2025
Dan.Garcia@srpnet.com

Your correspondence will be included as part of the Project record that is filed with the ACC. Additional Project information regarding the project is available online at www.srpnet.com/electric/transmission/projects/Huckleberry. If you have any questions or would like to discuss the results of the cultural resources survey, please do not hesitate to contact me by email at dan.garcia@srpnet.com or by telephone at 602.236.2336.

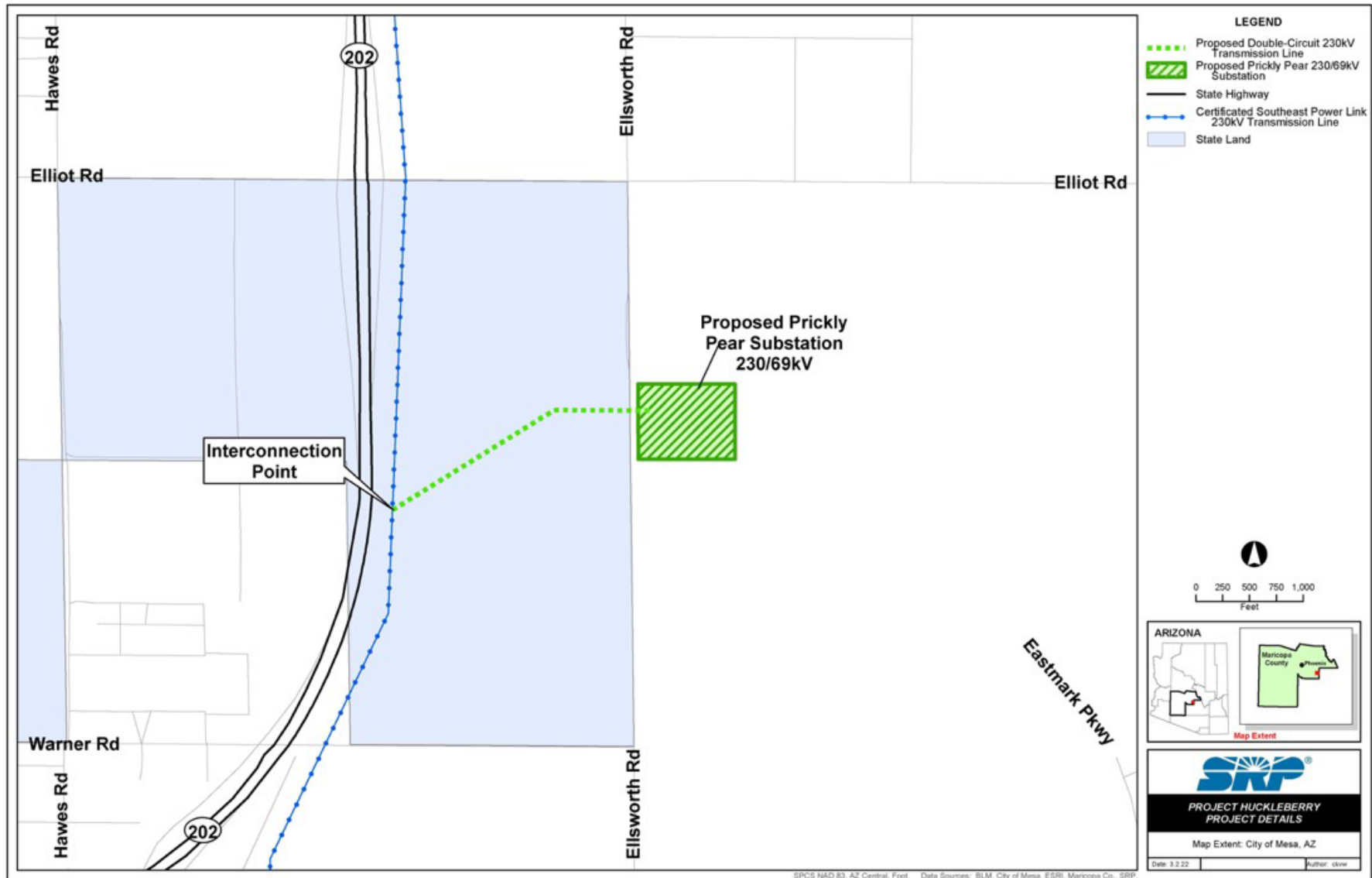
Respectfully,



Daniel Garcia, M.A., RPA
SRP Archaeologist - Senior Cultural Resource Management Specialist

Enclosures

Project Huckleberry Project Components Map





Biological and Cultural Resources | PAB359
P.O. Box 52025
Phoenix, AZ 85072-2025

March 29, 2022

Timothy L. Nuvangyaoma
Chairman
Hopi Tribe
P. O. Box 123
Kykotsmovi, AZ 86039



RECEIVED

HCPO
4/4/22

RE: Project Huckleberry 230 kV Transmission Line Cultural Resources
No Historic Properties Affected

Dear Chairman Nuvangyaoma,

Salt River Project Agricultural Improvement and Power District (SRP), is proposing the construction of the Project Huckleberry 230 kilovolt (kV) Transmission Line (Project). The Project is an approximately 0.5-mile-long 230 kV double circuit transmission line and associated interconnection facilities that will provide power to the proposed Meta Mesa Data Center (Data Center) located in Mesa, Arizona (see attached map). In addition to the new transmission line, the Project involves construction of the new Prickly Pear Substation.

The Project is in Township 1 South, Range 7 East, Sections 15 and 16, Gila and Salt River Base Line and Meridian, as depicted on the Higley, Arizona U.S. Geological Survey topographic quadrangle.

The proposed 230 kV transmission line would be constructed within right-of-way across undeveloped State Trust land managed by the Arizona State Land Department (ASLD), and would connect with the approved but as-yet unbuilt Southeast Power Link transmission line. The Prickly Pear Substation would be built on private land owned by Meta currently under development as part of the larger Mesa Data Center campus.

SRP is seeking a Certificate of Environmental Compatibility (CEC) from the Arizona Corporation Commission (ACC) for this Project. Consulting parties for this Project are the State Historic Preservation Office, Ak-Chin Indian Community, Gila River Indian Community, Hopi Tribe, Mescalero Apache Tribe, Pascua Yaqui Tribe, Pueblo of Zuni, Salt River Pima-Maricopa Indian Community, Tohono O'odham Nation, Tonto Apache Tribe, White Mountain Apache Tribe, and Yavapai-Apache Nation.

As part of the ASLD right-of-way application 14-122057-00-100 in 2021, SRP retained North Wind Resource Consulting to complete an intensive pedestrian cultural resource survey

of the proposed 230 kV transmission line corridor. No cultural resources were identified during the survey, and ASLD consulted with the State Historic Preservation Office, Arizona State Museum, Gila River Indian Community, Hopi Tribe, Pascua Yaqui Tribe, Pueblo of Zuni, Salt River Pima- Maricopa Indian Community, Tonto Apache Tribe, White Mountain Apache Tribe and Yavapai- Apache Nation on the survey results pursuant to the State Historic Preservation Act (Arizona Revised Statutes 41-861 through 4-864), and the Arizona Antiquities Act (Arizona Revised Statutes 41-841 through 4-844). For the proposed Prickly Pear Substation property, the Mesa Data Center developer retained AECOM to conduct a cultural resource records review, which documented that the parcel of privately owned land had been previously surveyed intensively for cultural resources as part of the former Mesa Proving Grounds cultural resources survey and that no properties listed in or eligible for the ARHP were identified within the proposed Prickly Pear Substation property. Thus, the entire CEC Project area has been subject to cultural resources survey and no archaeological sites or historic buildings or structures would be impacted by the Project. Accordingly, the proposed 230 kV transmission line and substation would result in a finding of "no historic properties affected."

I have enclosed copies of the cultural resource documents compiled for the Project for your review. All sensitive cultural resource locational information, including maps, will be redacted from any copies of these documents available to the general public.

Please let SRP know if you have any concerns regarding cultural resources as well as any sites of traditional, religious, cultural, or historical importance to your community within the Project vicinity. SRP anticipates filing the CEC Application by May 1, 2022. Please provide comments to my attention, using the details below:

Daniel Garcia
Senior Cultural Resource Management Specialist
SRP Biological and Cultural Resource Services PAB359
P.O. Box 52025, Phoenix, AZ 85072-2025
Dan.Garcia@srpnet.com

4-5-22
concern
Murgat
for
Koyiyumtewa

Your correspondence will be included as part of the Project record that is filed with the ACC. Additional Project information regarding the project is available online at www.srpnet.com/electric/transmission/projects/Huckleberry. If you have any questions or would like to discuss the results of the cultural resources survey, please do not hesitate to contact me by email at dan.garcia@srpnet.com or by telephone at 602.236.2336.

Respectfully,



Daniel Garcia, M.A., RPA
SRP Archaeologist - Senior Cultural Resource Management Specialist

CC: Stewart Koyiyumtewa, with enclosures

AK-CHIN INDIAN COMMUNITY

Community Government

42507 W. Peters & Nall Road • Maricopa, Arizona 85138 • Telephone: (520) 568-1000 • Fax: (520) 568-1001



April 13, 2022

Daniel Garcia M.A., RPA
Senior Cultural Resource Management Specialist
SRP Biological & Cultural Resources PAB359
P. O. Box 52025
Phoenix, AZ 85072-2025

RE: Project Huckleberry 230 kV Transmission Line Cultural Resources “No Historic Properties Affected”

Dear Mr. Garcia,

The Ak-Chin Indian Community did receive a letter regarding the Salt River Project Agricultural Improvement and Power District (SRP) proposal to construct Project Huckleberry 230 kilovolt (kV) Transmission Lien (Project). The project is an 0.5-mile long 230 kV double circuit transmission line with interconnection facilities to the proposed Meta Mesa Data Center (Data Center) located in Mesa, Arizona. The new transmission line, also involves construction of the new Prickly Pear Substation.

The Ak-Chin Indian Community did receive two reports attached to this letter for our review. the two reports titled:

1. Huckleberry – Mesa East mark Site – substation Permitting – Cultural Resource Memorandum conducted for the Prickly Pear Subdivision. AECOM
2. A Class III Cultural Resources Survey of 8.364 Acres for the Proposed Huckleberry Mesa Transmission Line Project Mesa, Maricopa County, Arizona. NORTHWIND RESOURCE CONSULTING

The Ak-Chin Indian Community has no comment and defers to the Gila River Indian Community's Tribal Historic Preservation Office in Sacaton, Arizona.

Should you have any questions please, contact Ms. Elaine F. Peters at 520-568-1350, or the Cultural Resources Office at 520-568-1365.

Sincerely,

Robert Miguel, Chairman
Ak-Chin Indian Community

From: [Karl Hoerig](#)
To: [Garcia Daniel M \(Dan\)](#)
Subject: Proposed Huckleberry 230kV transmission line and Prickly Pear Substation, Mesa
Date: Tuesday, April 12, 2022 1:11:49 PM

CAUTION: This email originated from outside the organization
Beware of suspicious links, files, or requests. When in doubt report as phishing.

Dear Dan,

We are not aware of any unidentified heritage resources of concern to the Pascua Yaqui Tribe within or near the project areas for the proposed transmission line and substation in Mesa. The reports indicating that no historic properties will be impacted by the projects also appear to be complete and appropriate.

With warmest regards,
Karl Hoerig

Karl A. Hoerig, Ph.D.
Tribal Historic Preservation Officer
Pascua Yaqui Tribe
7777 S. Camino Huivisim, Building C
Tucson, AZ 85757
(520) 883-5116
karl.hoerig@pascuayaqui-nsn.gov



White Mountain Apache Tribe

Office of Historic Preservation

PO Box 1032

Fort Apache, AZ 85926

Ph: (928) 338-3033 Fax: (928) 338-6055

To: Daniel Garcia. M.A., RPA – SRP Archaeologist

Date: April 12, 2022

Re: *SRP Huckleberry 230 kV Transmission Line Project*

.....

The White Mountain Apache Tribe Historic Preservation Office appreciates receiving information on the project dated; March 29, 2022. In regards to this, please refer to the following statement(s) below.

Thank you for allowing the White Mountain Apache tribe the opportunity to review and respond to the above proposed construction of the Huckleberry 230 kV Transmission Line, which will provide power to the proposed Meta Mesa Data Center located in Mesa, Maricopa County, Arizona .

Please be advised, we reviewed the consultation letter and the information provided, and we determined the proposed project plans will have ***“No Adverse Effects”*** to the tribe’s cultural heritage resources and/or traditional cultural properties and/or historic properties.

Thank you for your continued collaborations in protecting and preserving places of cultural and historical importance.

Sincerely,

Mark T. Altaha

White Mountain Apache Tribe – THPO
Historic Preservation Office