

# Project Huckleberry 230kV Transmission Line Project

## open house

Project Information Line: (855) 584-1484

Project Website: [srp.net/huckleberry](http://srp.net/huckleberry)

# AGENDA

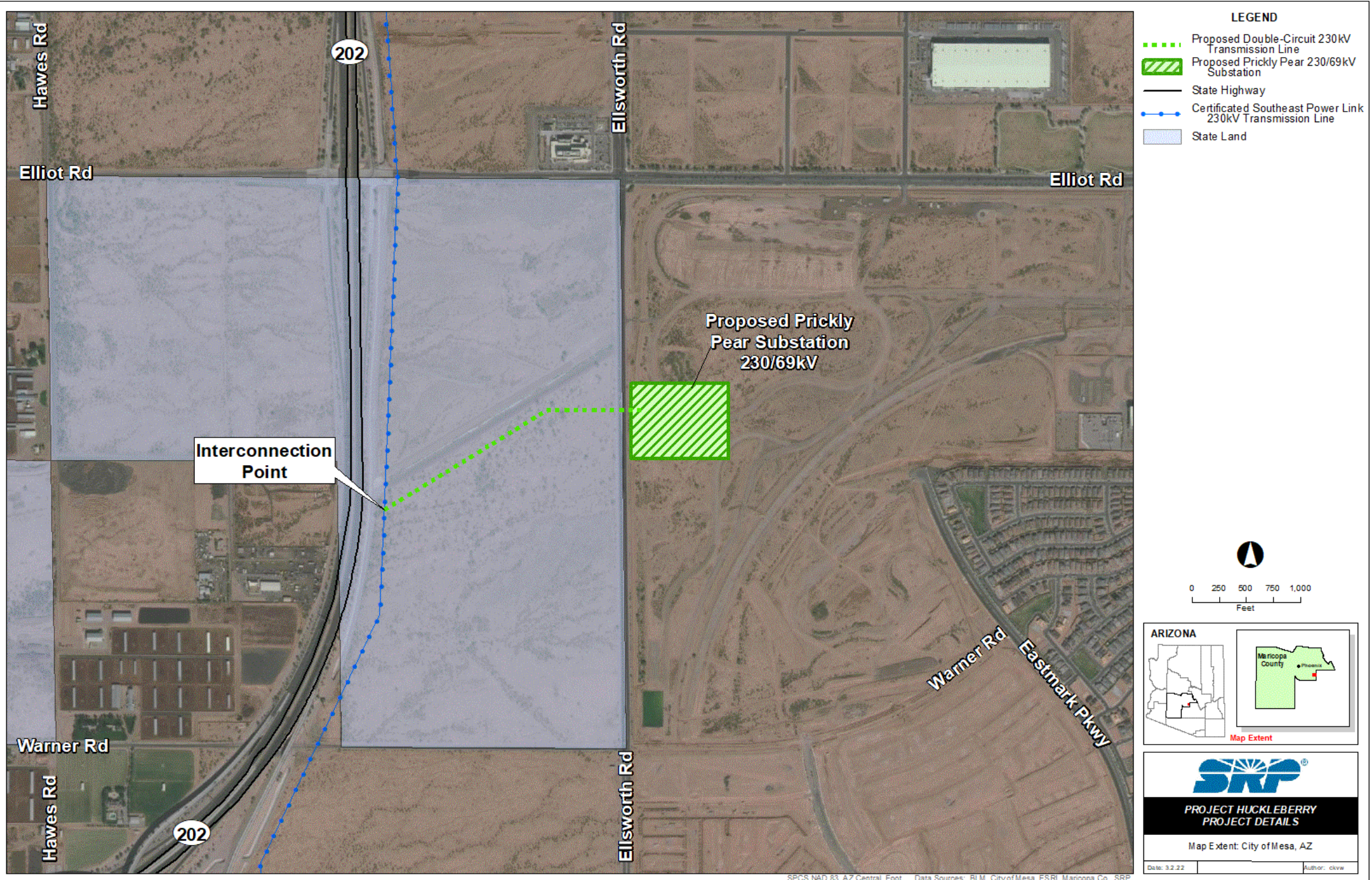
- Welcome – Samantha Horgen
- Introductions – Kevin Woolfolk, Project Manager
- Agenda for the Meeting
  - Video Vignettes
    - Purpose and Need
    - Project Routing
    - Regulatory and Environmental
- Additional Project Details – Kevin Woolfolk
- Questions and Answers (using Q&A feature)

**Project Information Line:**  
**(855) 584-1484**

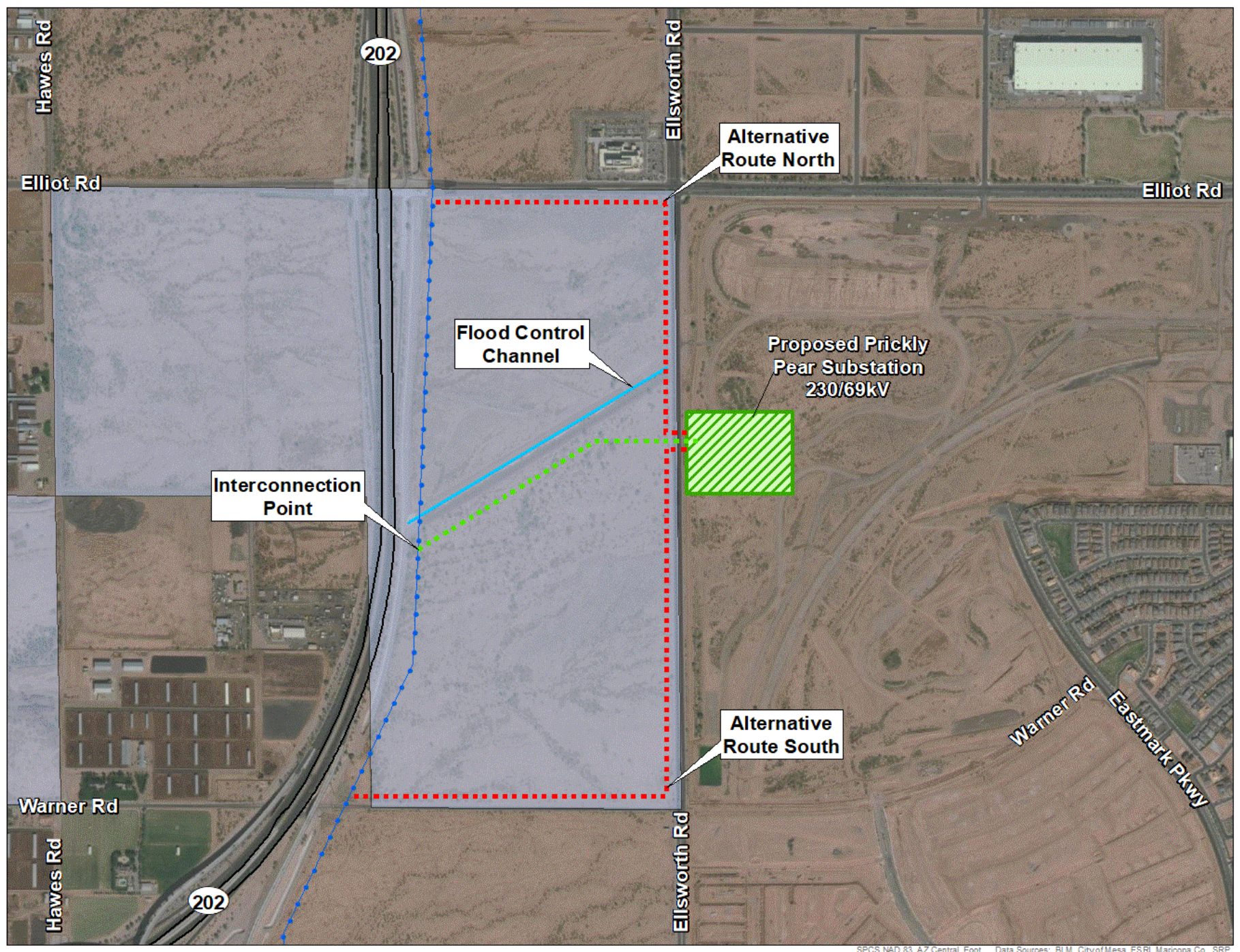
**Project Website:**  
**[srp.net/huckleberry](http://srp.net/huckleberry)**

# Video Vignettes









- LEGEND**
- Proposed Double-Circuit 230kV Transmission Line
  - Proposed Route Alternatives Analyzed
  - Proposed Prickly Pear 230/69kV Substation
  - State Highway
  - Certificated Southeast Power Link 230kV Transmission Line
  - Flood Control Channel
  - State Land

0 250 500 750 1,000 Feet

ARIZONA

Map Extent

**SRP**

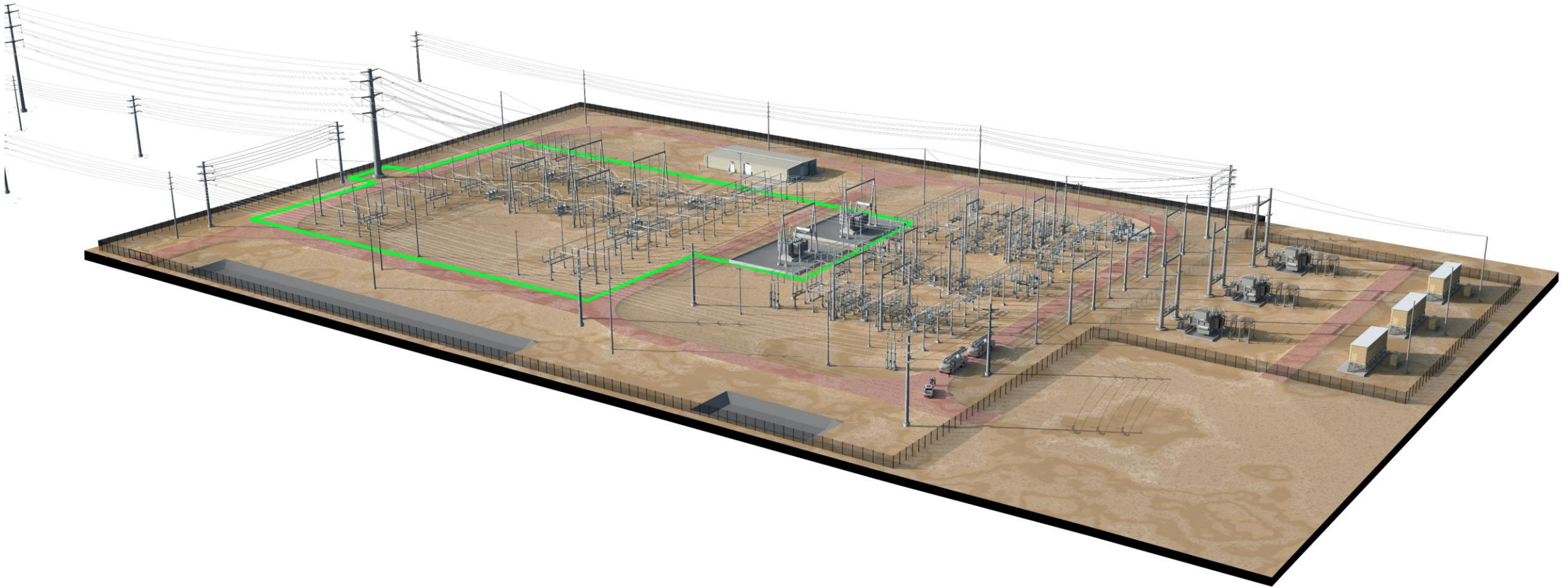
PROJECT HUCKLEBERRY  
PROJECT ROUTING DETAILS

Map Extent: City of Mesa, AZ

Date: 3.8.22 Author: ckw



# Substation Rendering

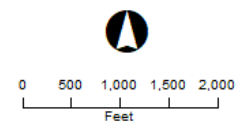







LEGEND

- Visual Resources**
- Key Observation Point (KOP) Location and Direction
- Project Huckleberry Components**
- Proposed Double-Circuit 230kV Transmission Line
  - Proposed Prickly Pear 230/69kV Substation
  - Project Study Area
- Other Components**
- Existing 500kV Transmission Line
  - Existing 230kV Transmission Line with 69kV Underbuild
  - Existing 69kV Transmission Line
  - Certificated Southeast Power Link 230kV Transmission Line
  - 69kV Transmission Line (under construction)
  - Customer-Dedicated 69kV Line (under construction)
  - State Highway
  - Major Road
  - Flood Control Channel
  - Existing Substation
  - Certificated Scott 230/69kV Substation
  - Customer-Owned 69/34.5kV Substation (under construction)
- Jurisdictional Land Ownership**
- State Land





PROJECT HUCKLEBERRY  
EXHIBIT E-1 KEY OBSERVATION POINTS

Map Extent: City of Mesa, AZ

Date: 3.4.22 Author: ckw



# KOP #1

East Elliot Road & South Ellsworth  
Road – Looking South

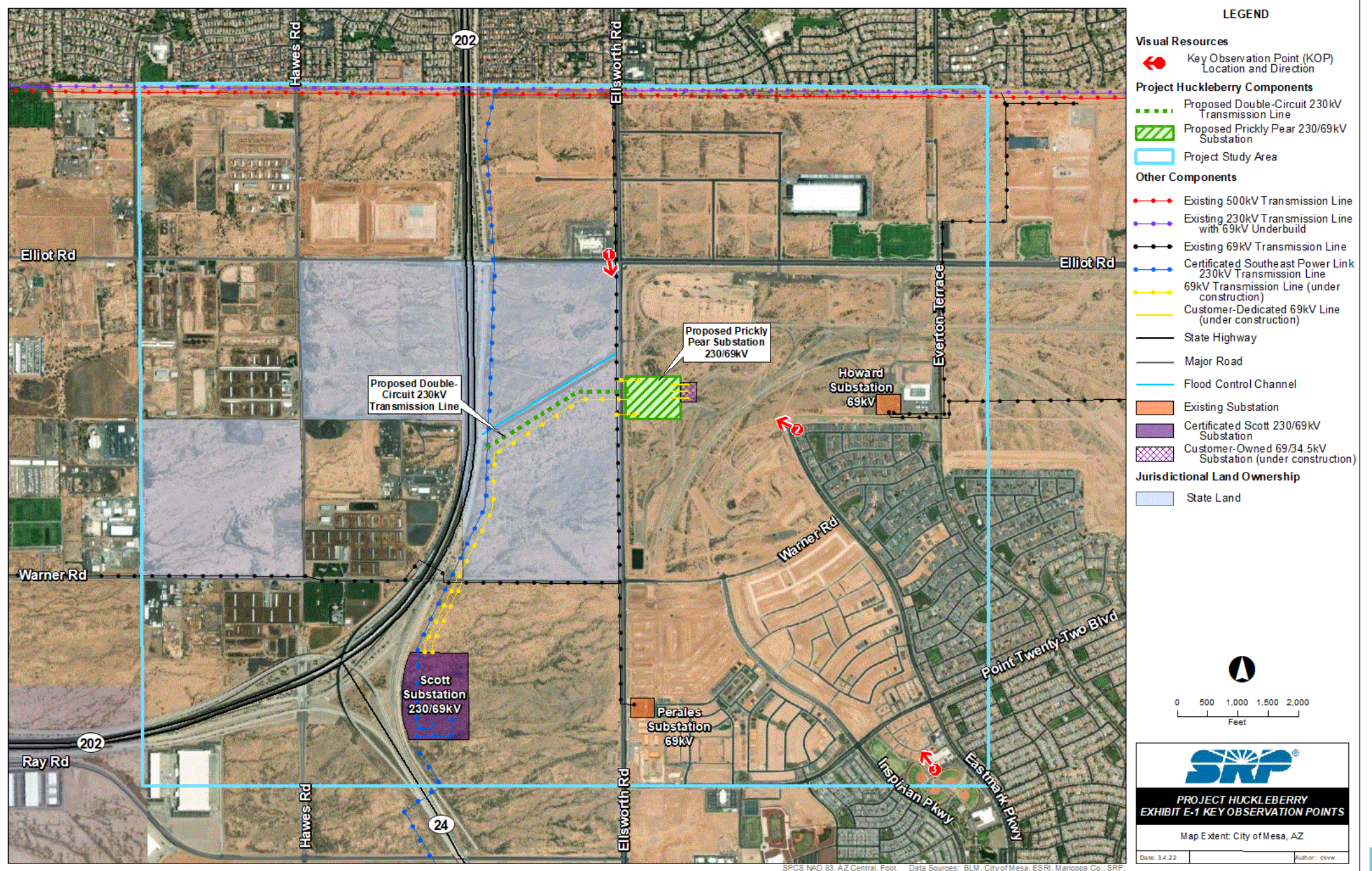
Existing View



Proposed View









# KOP #2

North end of South Eastmark  
Parkway— Looking Northwest

Existing View



Proposed View







# LEGEND

## Visual Resources

- Key Observation Point (KOP)  
Location and Direction

## Project Huckleberry Components

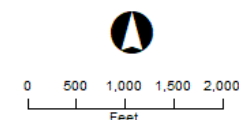
- Proposed Double-Circuit 230kV Transmission Line
- Proposed Prickly Pear 230/69kV Substation
- Project Study Area

## Other Components

- Existing 500kV Transmission Line
- Existing 230kV Transmission Line with 69kV Underbuild
- Existing 69kV Transmission Line
- Certificated Southeast Power Link 230kV Transmission Line
- 69kV Transmission Line (under construction)
- Customer-Dedicated 69kV Line (under construction)
- State Highway
- Major Road
- Flood Control Channel
- Existing Substation
- Certificated Scott 230/69kV Substation
- Customer-Owned 69/34.5kV Substation (under construction)

## Jurisdictional Land Ownership

- State Land



PROJECT HUCKLEBERRY  
EXHIBIT E-1 KEY OBSERVATION POINTS

Map Extent: City of Mesa, AZ

Date: 3.4.22

Author: ckw



# KOP #3

South Eastmark Parkway & East  
Point Twenty-Two Boulevard –  
Looking Northwest

Existing View



Proposed View





# Siting Process



# Siting Process

## Arizona Corporation Commission (ACC) Transmission Line Siting Committee Process

File Certificate of Environmental Compatibility (CEC)

*Anticipated filing Mid May 2022*

Siting Committee Public Hearings (30-60 days after filing CEC)

*Anticipated late June 2022*

ACC Public Hearings (minimum 30 days after Siting Committee Decision)

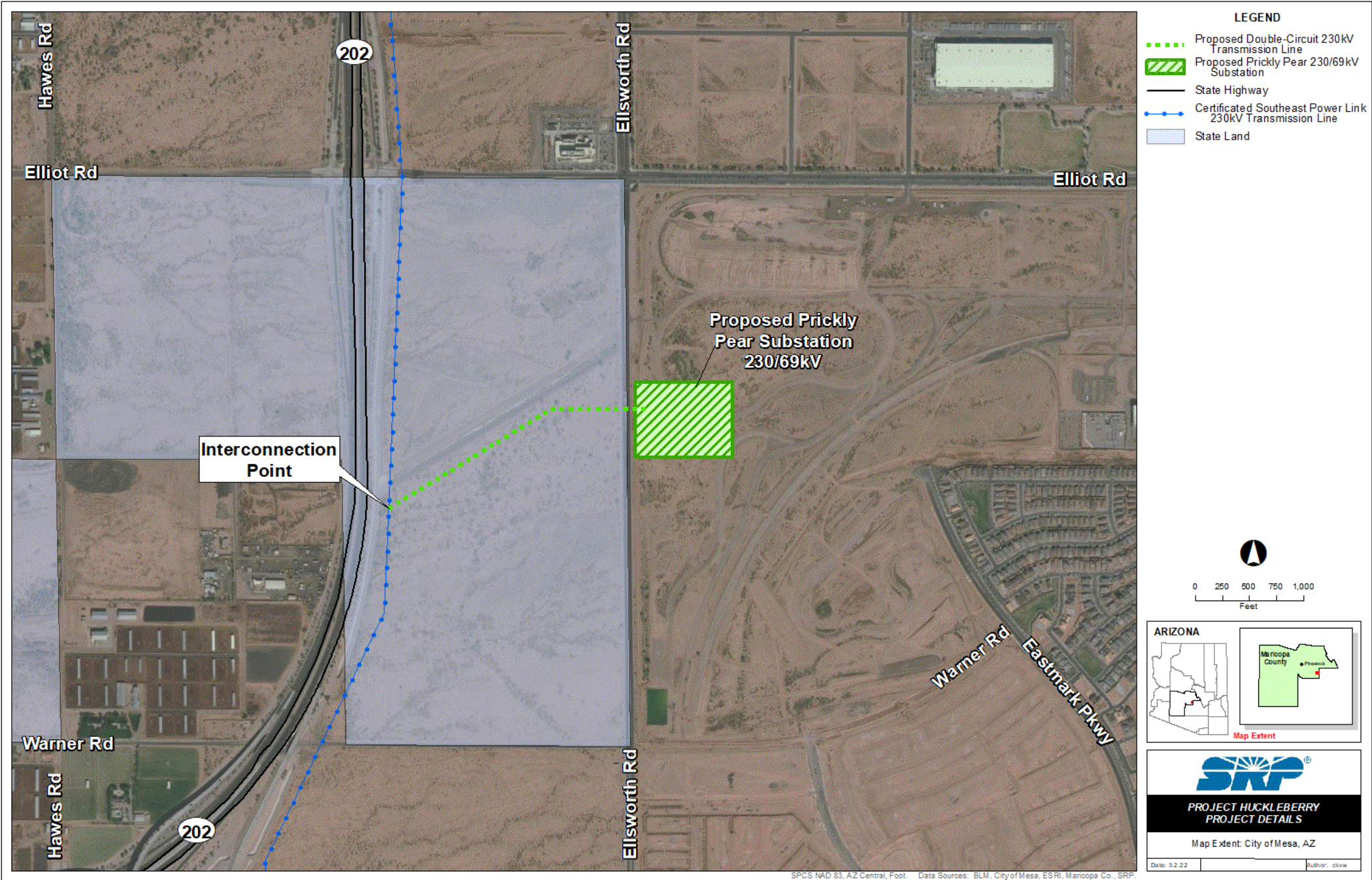


# Q&A Section

Project Information Line:  
(855) 584-1484

Project Website:  
[srp.net/huckleberry](http://srp.net/huckleberry)







# thank you!

Project Information Line:  
(855) 584-1484

Project Website: [srp.net/huckleberry](http://srp.net/huckleberry)