

EXHIBIT F RECREATIONAL PURPOSES AND ASPECTS

As stated in Arizona Administrative Code R14-3-219:

State the extent, if any, the proposed site or route will be available to the public for recreational purposes, consistent with safety considerations and regulations, and attach any plans the applicant may have concerning the development of the recreational aspects of the proposed site or route.

Existing Conditions

Regional recreation information for the region and surrounding areas was gathered from Maricopa County and the City of Chandler, Arizona. Regionally, Maricopa County has a diverse geography which offers a multitude of recreational opportunities. The terrain within the large county ranges from the broad, sloping alluvial plain south of the Phoenix metropolitan area to rugged mountain formations within areas of the southern portion of the county, like the Sonoran Desert National Monument, and in the eastern portion of the county, within the Tonto National Forest. Within the large area encompassed by Maricopa County, there also exists regional and local parks associated with various mountain ranges such as the Estrella Mountain, South Mountain, Phoenix Mountain, McDowell Mountain, Utery Mountain, and the San Tan Mountain.

The recreational activities more specific to the Project area range from developed activities in mixed use areas such as golf courses, organized sports areas, designated open spaces in subdivisions, and community parks, in addition to dispersed, undeveloped activities on private lands.

The majority of recreational areas within 1,000 feet of the route segments are passive open spaces or neighborhood-type parks, associated with subdivisions, that include catchment basins and common areas.

As discussed in **Exhibit A** and depicted on **Figure A-2**, lands traversed by the High-Tech Interconnect Project (HIP or Project) are under the jurisdiction of the City of Chandler. Some Maricopa County land and Gila River Indian Community tribal land are within the Project area.

Existing Henshaw Substation to Intel

There are no designated recreational areas or open space lands within 1,000 feet of the existing Henshaw Substation to Intel's Ocotillo Campus segment (node H1 to H2) (see **Figure F-1**). Lake of the Gold, a Sun Lakes community park, is the closest recreational area to this route segment, just outside the 1,000-foot buffer (southeast of node H2). The Oakwood Golf Course in Sun Lakes is the closest active recreational area, but again not within the 1,000-foot buffer.

New RS-28 Substation

There are no designated recreational areas or open space lands within 1,000 feet of the new RS-28 Substation on Intel's Ocotillo Campus (see **Figure F-1**). Lake of the Gold, a Sun Lakes community park is the closest recreational area to this segment, just outside the 1,000-foot buffer. The Oakwood Golf Course in Sun Lakes is the closest active recreational area, but again not within the 1,000-foot buffer.

Schrader Overhead Transition Corridor

The Paseo Vista Recreation Area is just outside the boundary and to the northeast of the 1,000-foot buffer around the Schrader Overhead Transition Corridor. The Paseo Vista Recreation Area was a landfill that the City of Chandler repurposed for public recreational uses. Amenities within the recreation area include an archery range, disc golf, dog park, playground, and walking trails.

The Consolidated Canal is depicted in **Figure F-1** as a neighborhood park that runs along the eastern border of both the Enclave at Pinelake and Pinelake Estates subdivisions. The canal borders the eastern edge of this route segment and runs from north to south within the 1,000-foot buffer. The canal is used for unofficial recreation activities such as jogging and biking.

There are also passive open spaces and neighborhood type parks associated with subdivisions that are within 1,000 feet of the Schrader Overhead Transition Corridor (see **Figure F-1**). The subdivisions with open space located within the 1,000-foot buffer are:

- Inspiration at Pinelake;
- Enclave at Pinelake;
- Pinelake Estates; and
- Reserve at Fulton Ranch.

Potential Effects

The Project components would not be available for public recreation purposes, but the Project would not preclude recreational uses in the area around the Project components.

The Project transmission line routes are within existing disturbed corridors along Old Price Road. The Schrader Overhead Transition Corridor is within the existing Schrader Substation and a disturbed parcel of land owned by Salt River Project Agricultural Improvement and Power District (SRP). The RS-28 Substation is completely on private land on Intel's Ocotillo Campus with no public access.

In order to maintain their high quality of services and facilities, SRP would work with the City of Chandler during the construction phase to ensure compliance with the City of Chandler's General Plan and the residential open space and neighborhood parks.

References

County of Maricopa. Parks and Recreation [Online] Located at: <http://www.maricopa.gov/parks>

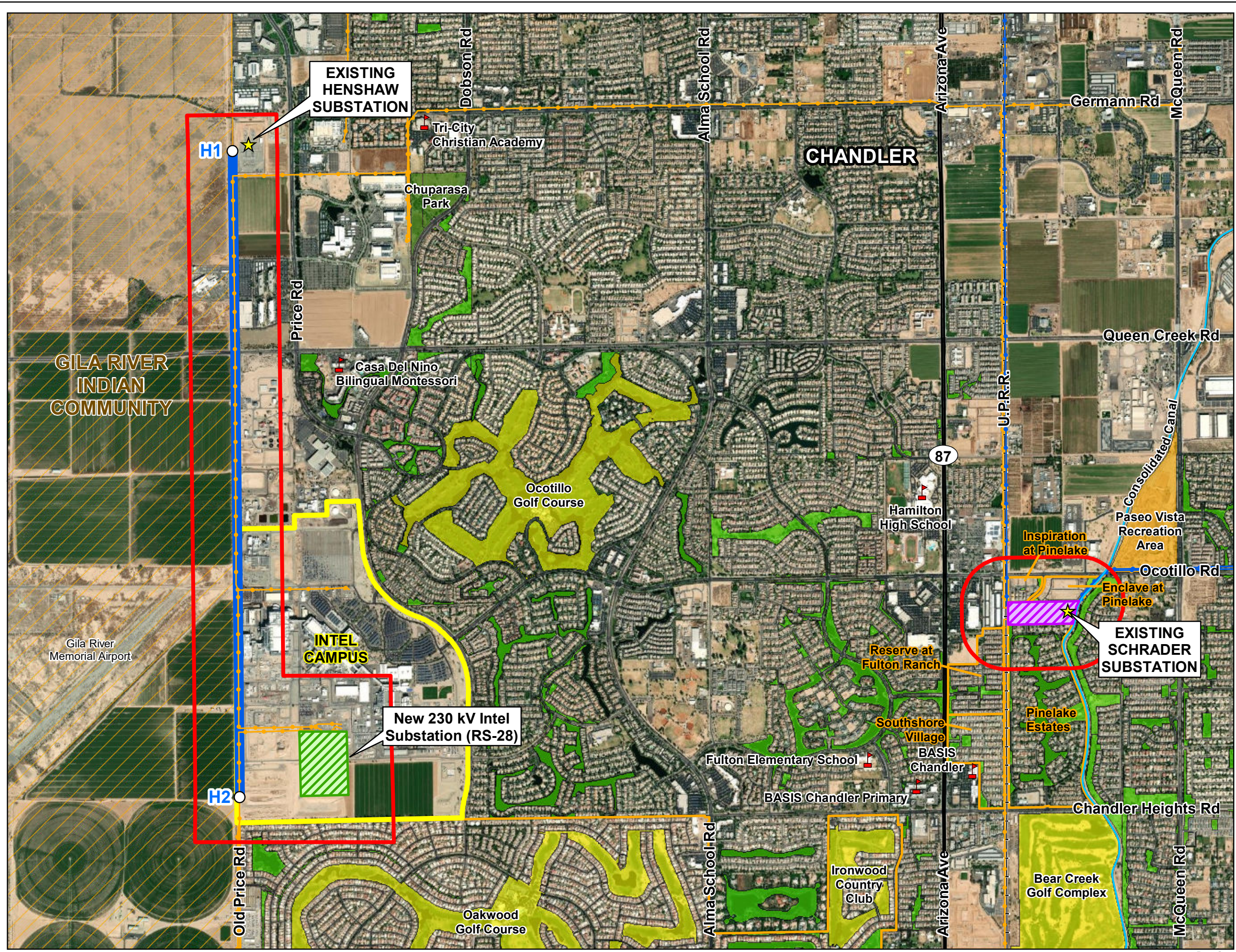
City of Chandler, 2016. General Plan 2016 [Online] Located at:
<http://www.chandleraz.gov/default.aspx?pageid=121>

City of Chandler, 2021. GIS land use data received August 2021.

City of Chandler, 2021. Paseo Vista Recreation Area [Online] Located at:
<https://www.chandleraz.gov/explore/chandler-parks/guide/paseo-trail/paseo-vista-recreation-area>

County of Maricopa, 2016. Comprehensive Plan, Vision 2030. Revised August 2002 [Online]
Located at: <http://www.maricopa.gov/planning/Resources/Plans/ComprehensivePlan>

County of Maricopa, 2021. Maricopa County Planning and Development Department GIS Home
Page, titled PlanNet. [Online] Located at: <https://gis.maricopa.gov/PND/PlanNet/index.html>



Legend

Project Components

- Node (Origin or Terminus)
- ★ Existing Substation
- Overhead Route
- ▨ Schrader Overhead Transition Corridor
- ▨ New 230 kV Intel Substation (RS-28)
- ▭ 1,000-Foot Buffer of Project

Recreation Within 1-Mile of Project

- ▭ School
- ▭ Neighborhood Park
- ▭ Community Park
- ▭ Recreation Area
- ▭ Golf Course

General Features

- Existing 230 kV
- Existing 69 kV
- State Highway
- Railroad
- Canal
- ▭ Intel Campus
- ▭ Neighborhoods Within 1,000 Feet of Project
- ▨ Gila River Indian Community

0 0.25 0.5 0.75 1
Miles

ARIZONA

Map Extent

SRP

HIGH-TECH INTERCONNECT PROJECT (HIP)
FIGURE F-1 RECREATION

Map Extent: Maricopa County, AZ

Date: 9.22.21 Author: sjw

Data Sources: ADOT, BLM, ESRI, Maricopa Co., Pinal Co., SRP, USGS.