

SRP HIGH-TECH INTERCONNECT PROJECT (HIP) ROUTE TOUR DIRECTIONS

Hilton Phoenix/Chandler -- Starting Point

From the Hilton Phoenix/Chandler Hotel (2929 West Frye Road, Chandler, AZ 85224), turn left onto Frye Road and travel west for 850 feet. Turn left onto Price Road and travel south for 0.5 miles until the stop lights at the Loop 202 East on-ramp. Turn left onto the Loop 202 Eastbound and travel for approximately 3.0 miles. Take the Arizona Avenue exit and turn right onto Arizona Avenue and travel for approximately 2.7 miles to Ocotillo Road. Turn left onto Ocotillo Road and travel for 0.4 miles, cross the railroad tracks, then turn right onto Pinelake Way. Travel south on Pinelake Way for 0.2 miles towards the Schrader Substation.

Schrader Substation

1 Observation Point 1: Pull off of Pinelake Way, on graded dirt road west of the Schrader Substation, parallel the railroad, facing south, on the east side of the railroad. **The Preferred Overhead Route (SP1-SP2) is on the west side of the railroad along the transmission line, and the Alternative Overhead Route (SA1-SA2) is on the east side of the railroad to Chandler Heights Road.**

Then head north on Pinelake Way 0.2 miles, turn left onto Ocotillo Road and travel west for approximately 0.4 miles. Turn left onto Arizona Avenue and travel south for approximately 1.0 mile. Turn left onto Chandler Heights Road and travel east for approximately 0.25 miles, drive over the railroad and look to your left. **At the railroad looking north is the Preferred Overhead Route and the Alternative Overhead Route.**

Turn north onto Pinelake Way and pull into the Chandler United Methodist Church on the north side of the road to turn around. Continue west on Chandler Heights Road for 1.4 miles. Turn right onto Alma School Road and travel north for approximately 0.6 miles. Turn left onto Lake Drive and travel west for approximately 0.3 miles. Turn left and travel west on Chaparral Way for approximately 0.4 miles until Dobson Road. Cross Dobson Road and continue west for approximately 0.5 miles and pull into the parking lot on your right just south of the Hoopes Substation. **From the area near Chandler Heights Road and the railroad to this point is the underground portion.**

New Intel 230kV Substation (RS-28)

2 Observation Point 2: From the parking lot in front of the Hoopes Substation, on the north side of Chaparral Way. **This point is located at the new Intel 230kV Substation (RS-28) site, H2 can be seen when looking southwest, and Sun Lakes is to the south of this point.**

Continue west on Chaparral Way for approximately 0.3 miles to the intersection of Old Price Road at the GRIC boundary and safely pull to the side of the road.

3 Observation Point 3: At the intersection of Chaparral Way and Old Price Road look to the north. **The overhead line will follow the existing transmission line and transition to underground approximately 800 feet south of this point.**

Turn right at the Chaparral Way and Old Price Road intersection and travel north on Old Price Road for approximately 1.75 miles to the intersection of Queen Creek Road. **The overhead line will follow the existing transmission line.**

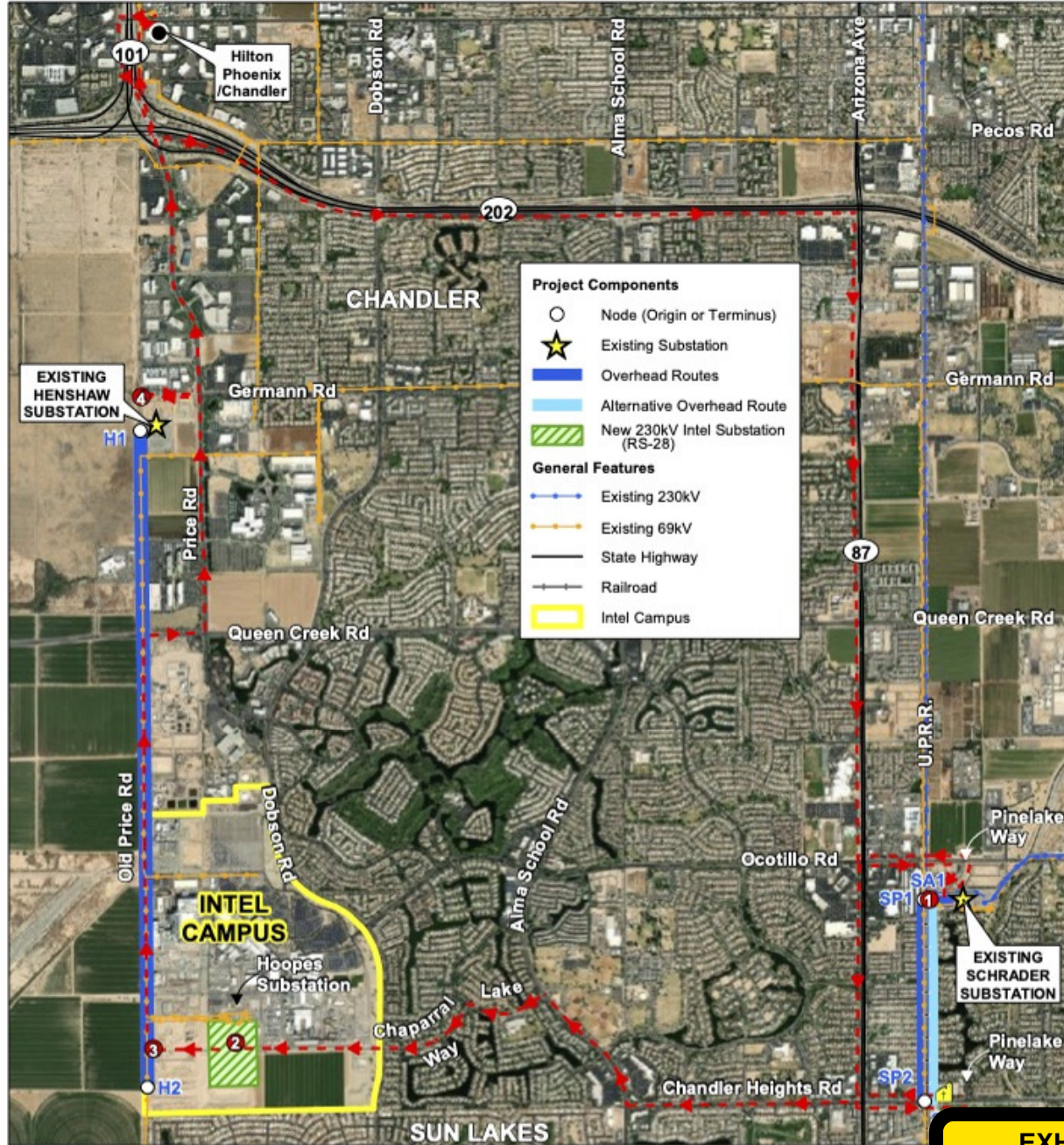
Turn right onto Queen Creek Road and travel east for approximately 0.25 miles to Price Road. Turn left onto Price Road and travel north approximately 1.0 mile to Germann Road. At Germann Road turn left and travel west for approximately 0.25 miles to the end of the road.

Henshaw Substation

4 Observation Point 4: You are at the northwest corner of Henshaw Substation. **The Overhead Route will exit the substation and follow the transmission line south towards Intel.**

To Return to the Hilton Phoenix/Chandler

Turn around and head east on Germann Road for 0.25 miles to Price Road. Turn left onto Price Road and travel north for approximately 1.6 miles to Frye Road. Turn right onto Frye Road and the hotel is on your right.



Legend

- Hilton Phoenix/Chandler
- ① Route Tour Observation Point
- - - Route Tour and Direction



HIGH-TECH INTERCONNECT PROJECT (HIP) ROUTE TOUR

Map Extent: Maricopa County, AZ

Date: 9.03.21 Author: gja

EXHIBIT A-3
 Prefiling 9-8-21