

IRRIGATION

NEWS FOR SRP AGRICULTURAL & OTHER URBAN SHAREHOLDERS / SUMMER 2022

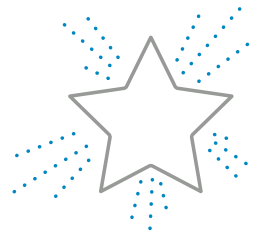
Back-to-School Safety

As summer vacation winds down, back-to-school season kicks into gear! Making sure ditches are cleared and standboxes are covered are just two things your neighborhood can do to help prevent any accidents as the school year begins. Working with neighbors to maintain the private system is a great way to help each other while helping keep the neighborhood safe.



Red, White and Blue Ice Box Cake

Give your Fourth of July festivities a taste of freedom with this summer berry treat. This patriotic ice box cake is the perfect dessert for any Independence Day celebration.



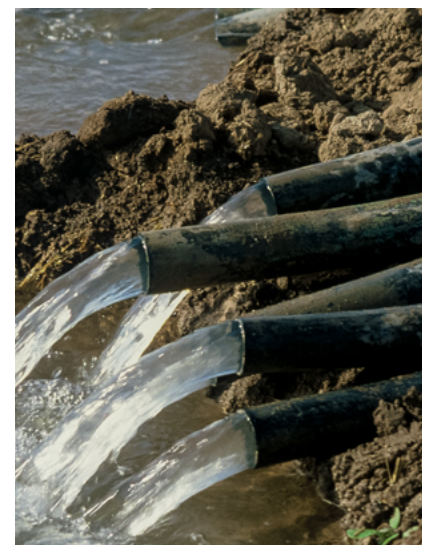
- 8 oz. cream cheese
- 2 packages white chocolate pudding
- 1 box graham crackers
- 2 cups milk
- 12 oz. Cool Whip
- 1 quart strawberries, sliced
- 1½ cups blueberries
- 2 oz. white chocolate

In a large bowl, beat the pudding and cream cheese with a mixer until combined. Beat in the milk. Stir in the Cool Whip, saving 1/2 cup. Spread a thin layer of Cool Whip on the bottom of a 9" x 13" baking dish. Layer five graham crackers across the bottom of the dish, then break up two more to finish filling around the edges. Spread a layer of the pudding mixture over the graham crackers then top with a layer of strawberries and blueberries. Repeat two more times. Refrigerate for at least 4 hours until the graham crackers have softened completely. When ready to serve, melt the white chocolate in a bowl for 20 seconds in the microwave and drizzle it on top of the cake. Enjoy!

Partnering to Reliably Flow Into the Future

A new partnership between the City of Goodyear and SRP will help the growing city receive dependable water. Goodyear receives water from the Central Arizona Project (CAP) but is too far away from its canal to take direct delivery of the water. With this new collaboration, Goodyear's

Colorado River water will split off from the CAP Canal and enter the SRP system at the CAP-SRP Interconnect Facility where it will make its way to the Goodyear water treatment facility. To read more about this innovative agreement, visit srp.net/goodyear.



SRP
Reservoirs at
70%

As of May 20, the total SRP reservoir system was **70%** full at **1,599,562** acre-feet in storage. A year ago, the total system was **72%** full. Storage on the Salt River system is at **75%**; the two reservoirs on the Verde River are at a combined **33%** of capacity. Stay up to date on reservoir levels daily at watershedconnection.com.

Source: watershedconnection.com
Data is accurate as of May 20.

Watershed to Showerhead

Water for the Phoenix metropolitan area reaches the Valley via canals after traveling 150 miles from its source. Watersheds, which are areas of land where rainfall and snowmelt all drain to the same place, make our current water system possible. These lands are the source of water we use every day. That includes your shower water! Protecting our watersheds and conserving their resources are vital to making sure we are ready to meet the Valley's needs even if there are changes in climate or conditions. Learn more at srp.net/watershed.

Sign up for My Account

SRP My Account™ gives our customers an easy way to manage their irrigation accounts. When you are registered for My Account, you can place water orders, view schedule times and sign up for important reminders. To take advantage of this feature, sign up at srp.net/myaccount.



P.O. Box 52149 | Phoenix, AZ 85072-2149

PRSRT STD
U.S. POSTAGE
PAID
PHOENIX, AZ
PERMIT NO. 395



A Look Back: The Original Canal Network

Did you know the groundwork for SRP's canal system prior to American settlement beginning in the late 1860s was laid by the land's original inhabitants? The Huhugam built and cared for waterways spanning more than 500 miles by hand using wooden and stone tools. During the late 19th and early 20th centuries, the canals attracted the attention of archaeologists who mapped the ditches before they were lost to development. There are still a few places where you can see the original canals, including the Park of Canals in Mesa. For more information on the history of SRP canals, please visit srp.net/canalhistory.

IRRIGATION

News for SRP agricultural and other urban shareholders published quarterly

CORRESPONDENCE

SRP Irrigation Editor
PAB340
P.O. Box 52025
Phoenix, AZ 85072-2025
srpnet.com

FIND US ON SOCIAL MEDIA



July 2022

©2022 SRP All rights reserved | 632377 | 6/22