

General Notes:

- A. INSTALLATION OF CEILING HUNG TOILET PARTITIONS MUST BE IN ACCORDANCE WITH MANUFACTURERS INSTRUCTIONS.
- B. IT IS THE DISTRIBUTOR'S RESPONSIBILITY TO CONSULT A STRUCTURAL ENGINEER TO ASSESS EXISTING STRUCTURAL ELEMENTS AND COMPLY WITH LOCAL BUILDING CODE.

ALL THREAD DRILLED AND TAPPED INTO THE STEEL STRUCTURE

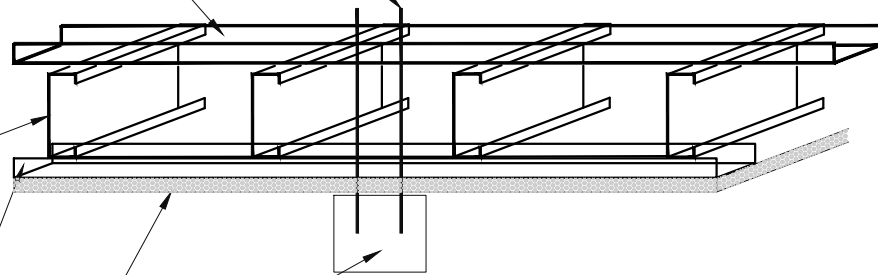
5/16" C-CHANNEL STEEL SECURED TO 16 GA. STEEL STUDS

16 GA. 6" STUDS

16 GA. 6" TRACK

FINISHED GYPSUM BOARD CEILING

TOILET PARTITION TRIM



CEILING RESTROOM PARTITION SUPPORT

REV. NO. 001

REV. DATE : 08-27-20

DRAWN BY : NBS

DWG. NO.

AC-05

SCALE : NTS