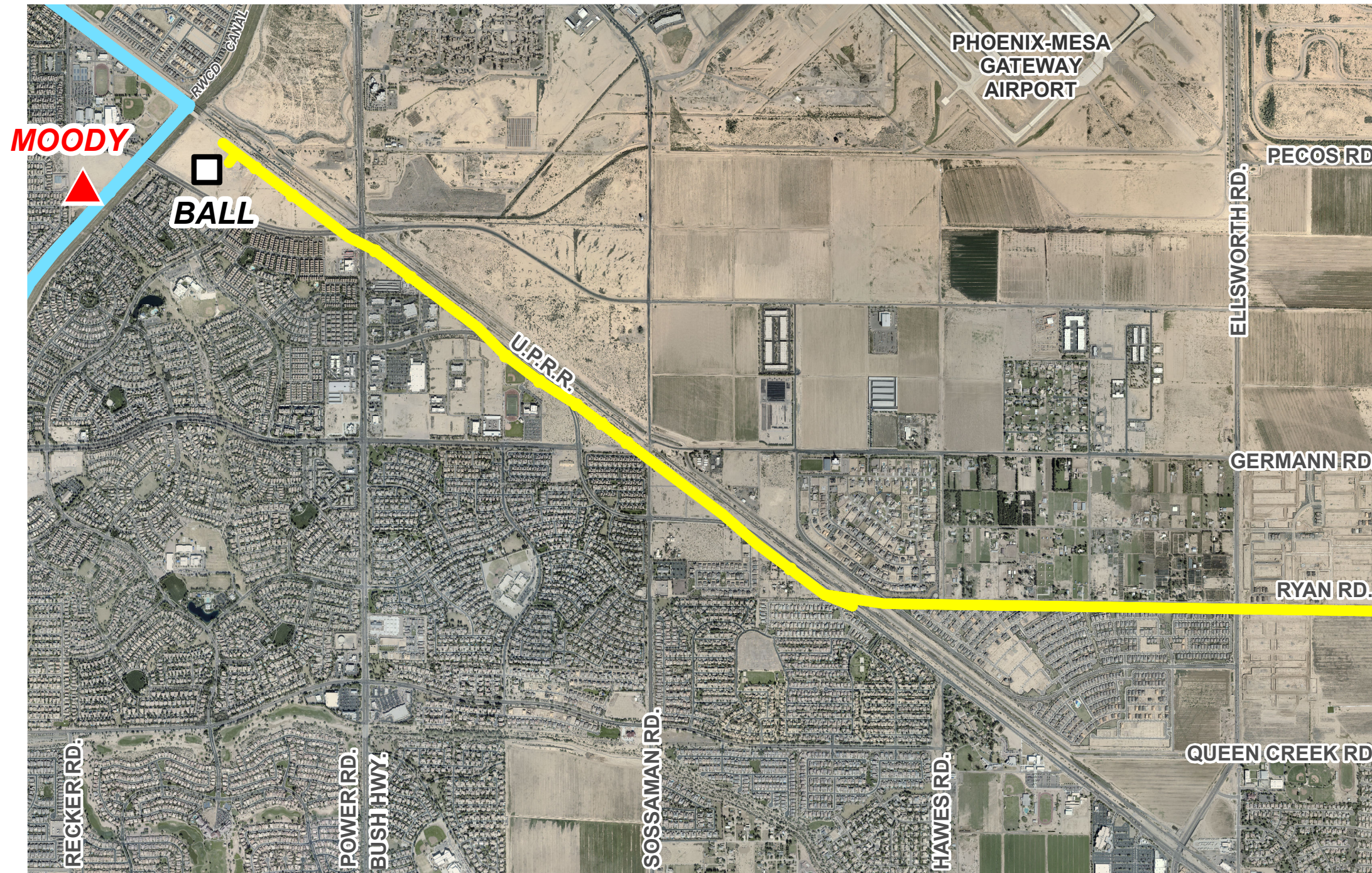






Abel-Pfister-Ball 230kV Transmission Line Project



LEGEND

-  Existing 69kV Substation
-  Future 230kV Substation
-  Existing 230kV Transmission Line
-  Approved 230kV Abel-Pfister-Ball Transmission Line

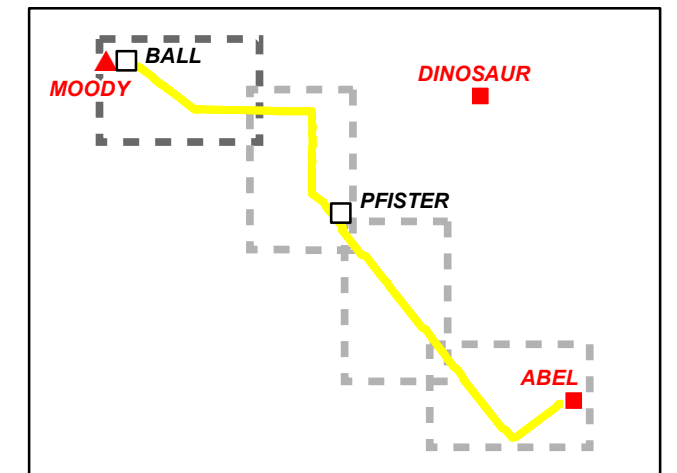


PHOTO DATE: SEPT. 2018

© 2020 Salt River Project (SRP)
Miles
SRP makes no representation as to the accuracy of this mapping product nor as to its fitness for a particular purpose. 0 0.25 0.5 N

Cartographic & GIS Services

7/14/2020 CAR:\ABELPFISTERBALL230KVLINER_AREA1.MXD