

2022



# Distributed Generation Interconnection Handbook

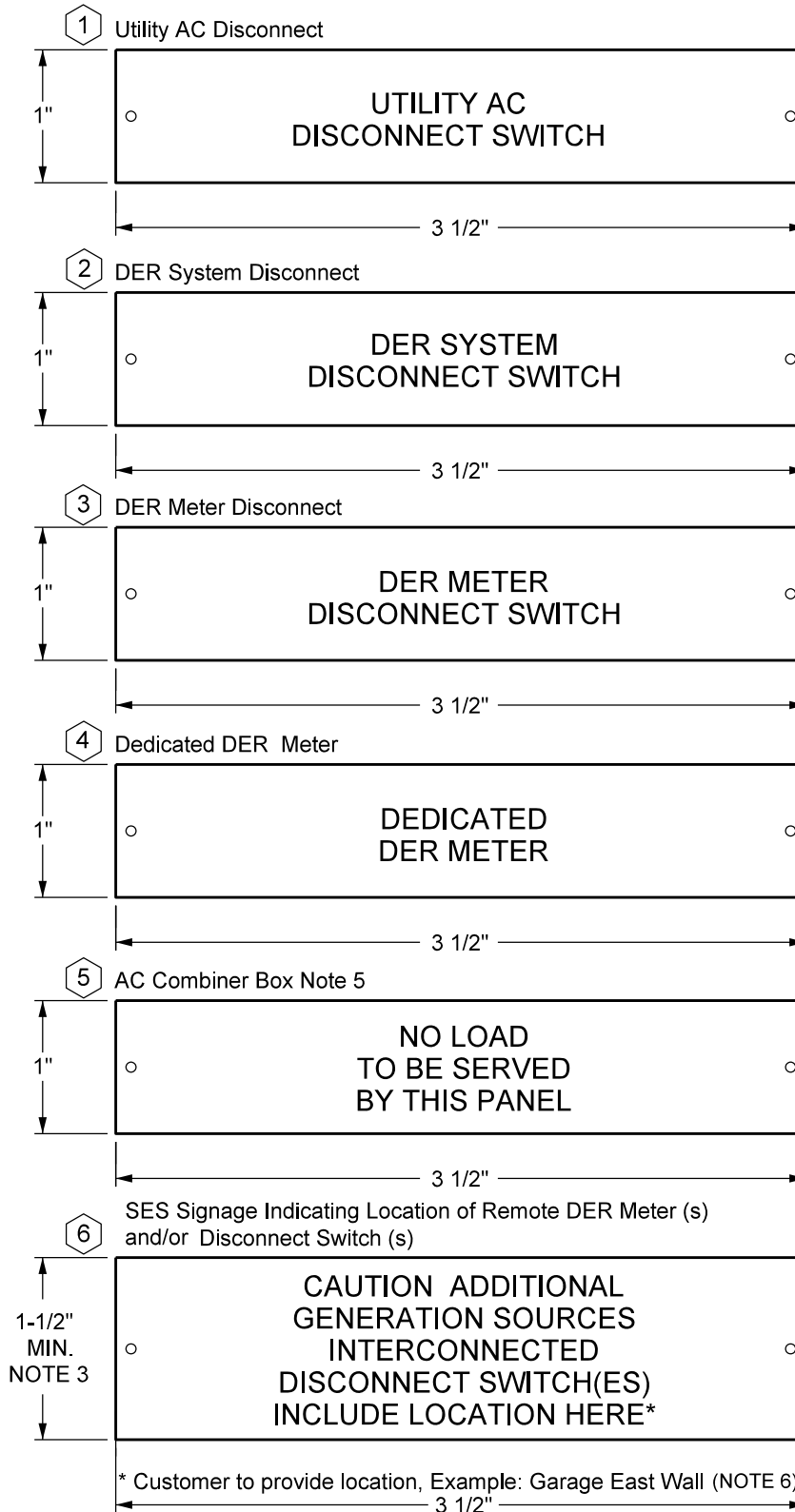
---

PUBLISHED: 2022

THIS MANUAL SUPERSEDES ALL PRIOR ISSUES AND REVISIONS


## SECTION 2: DER TECHNICAL REQUIREMENTS

### 6.6 DER Signage

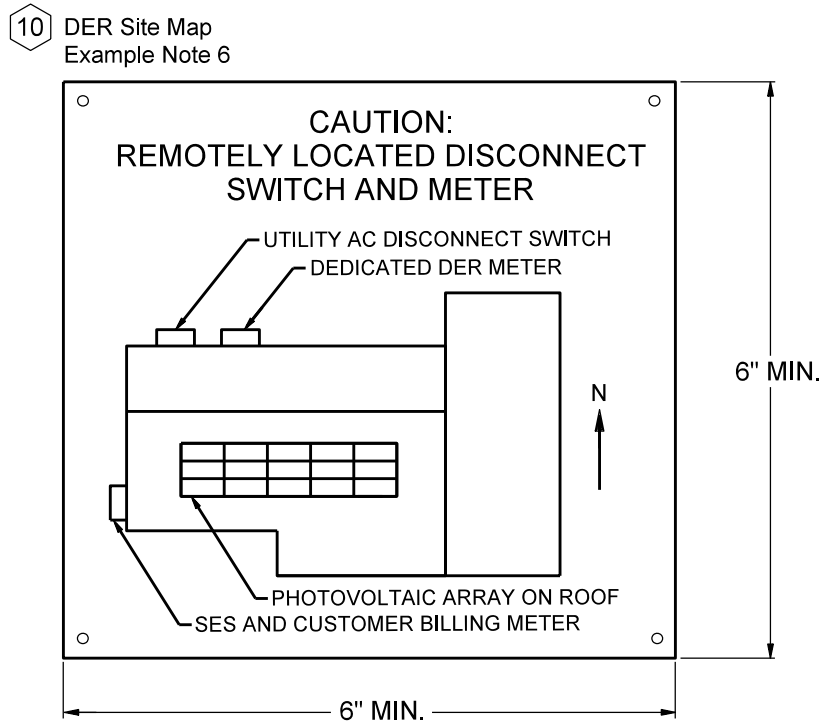
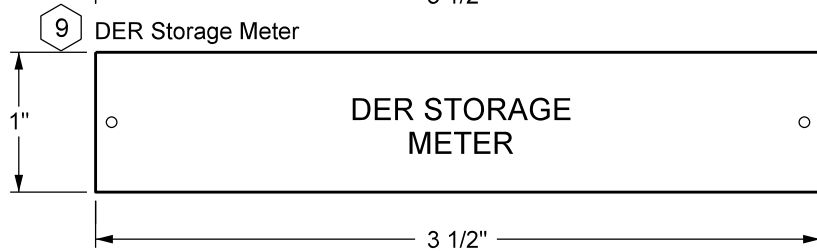
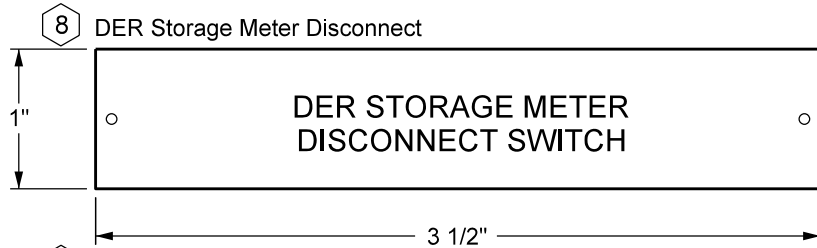
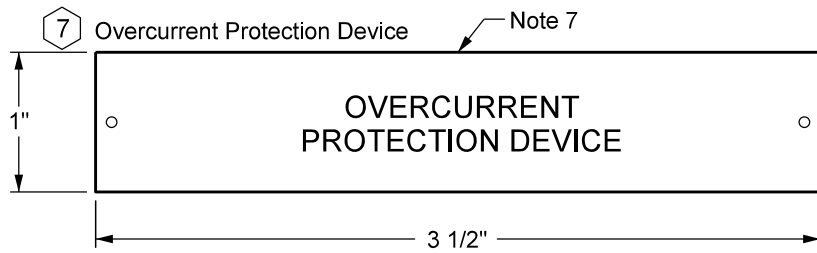


**NOTE**

For all other contractor supplied material and additional labeling, see ESS Section 11: Contractor Supplied Material.


<p>Distributed Generation Interconnection Handbook</p>  <p>PROPRIETARY MATERIAL</p>	PAGE 1 OF 3	
	<p>CONTRACTOR - SUPPLIED MATERIAL DISTRIBUTION ENERGY RESOURCE (DER) SIGNAGE</p>	
	<p>2-6-4</p>	
	<p>ISSUE DATE: 05/10/21 REV. DATE: APPROVAL: K. MacFadyen 8523E018.DGN</p>	

## SECTION 2: DER TECHNICAL REQUIREMENTS

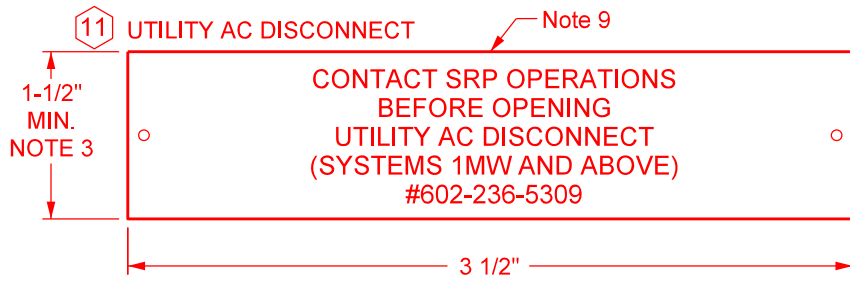


**NOTE**

For all other contractor supplied material and additional labeling, see ESS Section 11: Contractor Supplied Material.

Distributed Generation Interconnection Handbook   PROPRIETARY MATERIAL	PAGE 2 OF 3
	CONTRACTOR - SUPPLIED MATERIAL DISTRIBUTION ENERGY RESOURCE (DER) SIGNAGE  2-6-5

## SECTION 2: DER TECHNICAL REQUIREMENTS



Approved Suppliers		
Ability Imprinting LLC (PH. # 602-459-0960)	CompuCom Services (PH. # 602-504-8935)	Bazzill Engraving Company (PH. # 602-437-9019)

### NOTES

1. Dymo type as described in ESS Section 9, Addressing and Identification
2. Signs shall be pop-riveted to Front Face of cabinet as shown in diagrams.
3. Signs are stainless steel, 0.015" thick (min.) or aluminum 0.059" thick (min.) with raised or impressed letters 0.01" (min.). Capital letters 3/16" min.
4. All pop-rivet holes are 1/8" diameter (typ.)
5. Signage for AC Combiner Box and Remote Load Center only required if these options utilized.
6. Disconnect switches and/or meters not within line of sight of the service entrance section shall be identified on a site map attached the SES per note 2. The type of DER generation or storage shall also be identified. The site map shall be red 3M Impact Acrylic (or equivalent) and comply with AHJ requirements. Letters shall be engraved .01" minimum depth. Capital letters 3/16" minimum. Indicate north as shown.
7. Overcurrent Protection labeling required when Overcurrent Protection device is separate from the Utility AC Disconnect Switch.
8. For all other contractor supplied material and additional labeling, see ESS Section 11: Contractor Supplied Material.
9. On systems 1MW and above, the preferred location is near the disconnect operating handle.

	REV: ADDED NEW LABEL PLUS NOTE	PAGE 3 OF 3
	<p align="center"><b>CONTRACTOR - SUPPLIED MATERIAL DISTRIBUTION ENERGY RESOURCE (DER) SIGNAGE</b></p>	ISSUE DATE: 05/10/21 REV. DATE: 12/13/21 APPROVAL: K. MacFadyen
	2-6-6	8523E020.DGN