

# Abel-Pfister-Ball 230kV Transmission Line Project

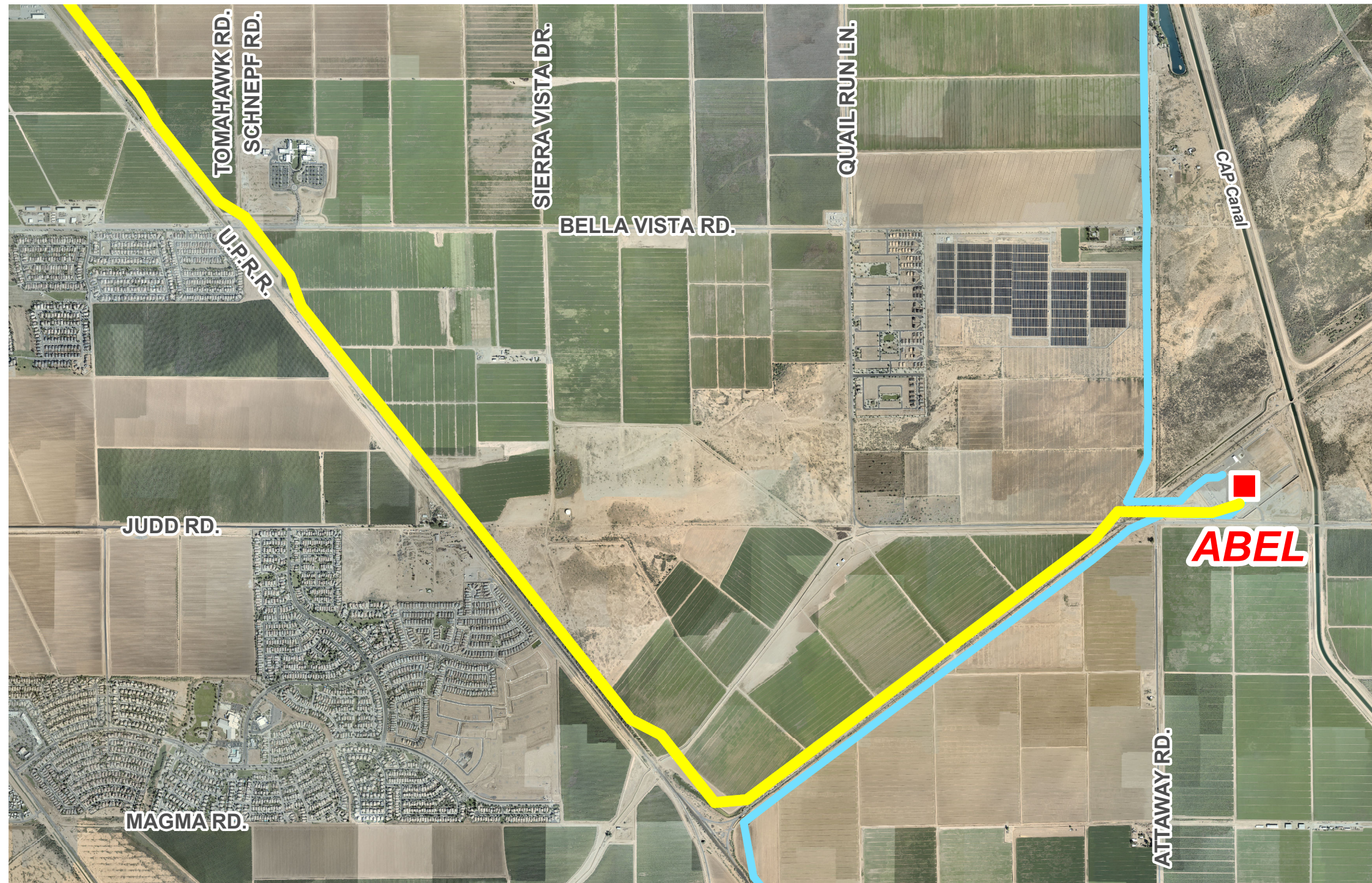
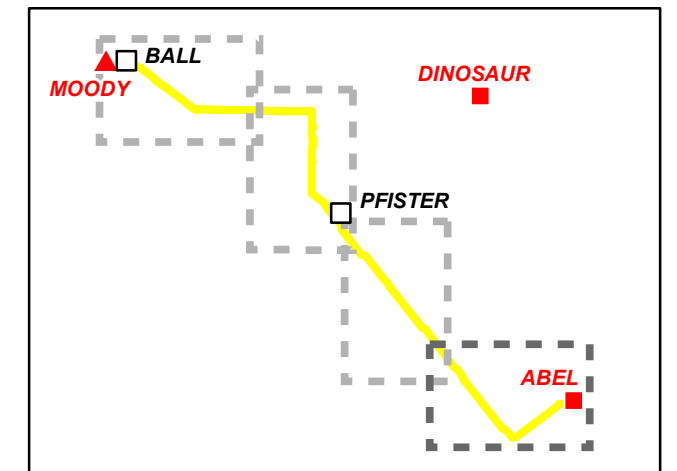


PHOTO DATE: SEPT. 2018

## LEGEND

- Existing 230kV Substation
- Existing 230kV Transmission Line
- Approved 230kV Abel-Pfister-Ball Transmission Line



© 2020 Salt River Project (SRP)  
Miles  
SRP makes no representation as to the accuracy of this mapping product nor as to its fitness for a particular purpose. 0 0.2 0.4



Cartographic & GIS Services

7/14/2020 CAR:\ABELPFISTERBALL230KVLINE\_AREA4.MXD