

# WATERWAYS

NEWS ABOUT SRP WATER STEWARDSHIP • JUNE 2009

## DESERTWISE WATER CONSERVATION EXPO ATTENDEES GET "SMART"

Back by popular demand, SRP's DesertWise™ Water Conservation Expo returned in March, after a successful inaugural event in 2008. The Water Conservation Expo provides an opportunity for SRP water users to learn about water conservation, examine informational and educational booths and demonstrations, talk with municipal water conservation experts, and receive a discounted price on a "smart" irrigation controller.

Smart controllers use weather data to manage outdoor watering schedules more efficiently, resulting in healthier home landscapes. Most households see a reduction in outdoor water use – where up to 70% of household water usage occurs. Total household water use may drop 20 – 25%.

This year, for the first time, two Expo locations made it even easier to participate. The first event was held at SRP's PERA Club in Tempe on March 7, and the second was held at the Glendale Public Library on March 28 and ran concurrent with the Glendale Green Festival.

Participants registered for a 30-minute workshop covering the installation and programming of the smart controller and were able to purchase the device for \$143, discounted from SRP's cost of \$286. More than 1,100 attendees purchased 590 smart controllers, enabling them to play a more active role as Valley water stewards.



## MESSAGE FROM JOHN SULLIVAN, ASSOCIATE GENERAL MANAGER, SRP WATER GROUP

June 2009 marks the final issue of *Waterways* as a print publication. As technology advances and we increasingly utilize the convenience of dealing with information electronically, it is only fitting that *Waterways* keep up with the times. Additionally, an electronic format affords SRP a cost savings by eliminating the need for a large

print run for this publication. In the future, you will receive *Waterways* via e-mail as a PDF attachment, which you may print, should you choose to do so. As always, we look forward to bringing you key topics of interest to keep you informed of emerging water stewardship issues in the months ahead.

## SRP FILES ANNUAL REPORTS WITH ADWR

The Arizona Department of Water Resources (ADWR) was created to manage the amount of groundwater being pumped and to ensure an adequate quantity and quality of water for Arizona's future. SRP began filing annual reports with the agency in 1984 as outlined by the Arizona Groundwater Management Act (GMA) of 1980.

SRP Water Contract Accounting works on the filing from January through March of each year. The filing must be submitted to ADWR by March 31, summarizing the previous year's water picture.

The types of information submitted to ADWR include:

- ◆ **Water Supply** – water released from the Granite Reef Dam, water diverted from the CAP canal and water pumped from wells
- ◆ **Water Demand** – water delivered directly to farmers and irrigated

subdivisions, turf deliveries, water delivered to city water treatment plants, as well as water delivered to Indian Communities, Irrigation Districts and power plants

- ◆ **Loss and Unaccounted for Water** – supply water that was lost in the delivery system (the percentage of loss is usually in the range of 5% to 8%)
- ◆ **Well Pumping** – a list of each well, detailing its location, how many acre-feet (af) were pumped and the type of water pumped
- ◆ **Underground Storage Facilities** – the amounts and types of water delivered to GRUSP and NAUSP for each of the owners of these facilities
- ◆ **Water Exchanges** – SRP water used on land that does not have entitlement for this water. The owner of the land must repay the water to SRP by providing an alternate source; these exchanges must meet ADWR's rules.

SRP's Robert Rone, Shareholder Accounting Technician, creates the annual GMA letters for all active GMA Certificate holders, detailing the amount of water delivered to their properties. These properties include parks, golf courses, churches, farms, etc., that must prepare their own annual ADWR filing report.

SRP also is required to pay Groundwater Withdrawal Fees to ADWR at the current rate of \$3 per af for groundwater pumped from non-exempt wells. This included a minimum pumping of approximately 9,700 af in 2008 and a maximum pumping of 325,750 af in 2003 over the last 10 years.

Annual reporting enables SRP to keep close check on water resources and helps water planners at ADWR do their important work with the most relevant, accurate water data possible.

# SRP WATER SUPPLIES IN GOOD SHAPE FOR SUMMER

SRP has entered the summer with nearly full reservoirs. Runoff season, when snowmelt from the watershed finds its way into SRP's reservoirs, is January through May.

A wet December that brought 4.3 inches of precipitation to the Salt and Verde watersheds resulted in enough runoff to completely fill the Salt reservoir system and raise levels in the Verde reservoirs, which are now 61% full. As of June 1, the combined reservoir system was 94% full.

In fact SRP's largest reservoir, Roosevelt Lake, filled to capacity at 2,151 feet and actually entered flood control space for the first time ever for about two weeks in March. Roosevelt Lake reached the highest elevation in its history on March 8 at 2,151.18 feet. Roosevelt Lake holds about 70% of SRP's reservoir system storage capacity.

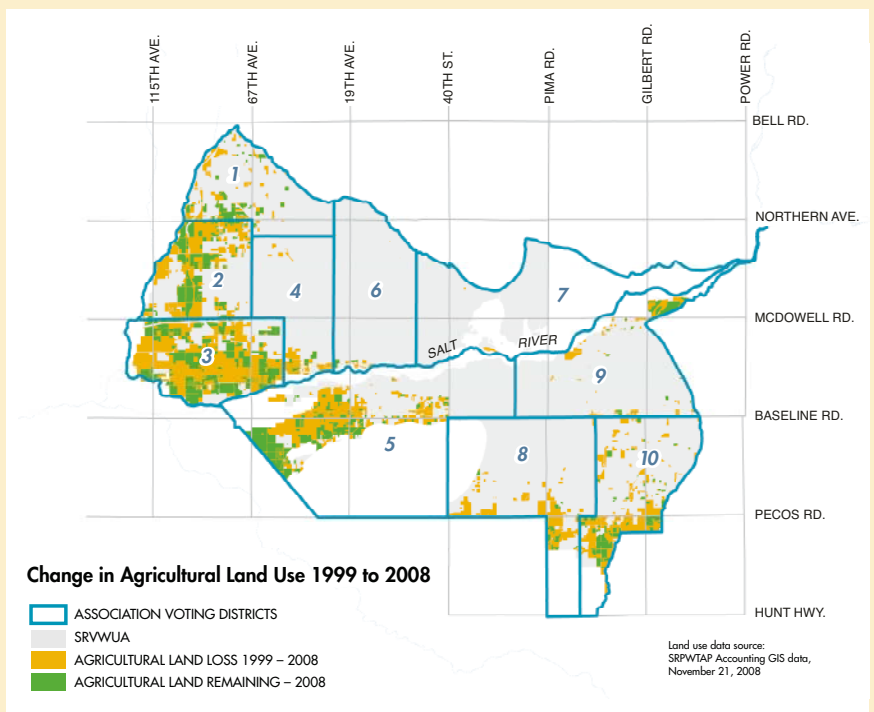
"Despite being in the midst of long-term drought

conditions, the majority of winter precipitation the last two years arrived early in the winter season, which is most beneficial to our water supply," said Charlie Ester, Manager, Water Resource Operations. "We can count our blessings for that stroke of good fortune."



## DID YOU KNOW?

SRP's water service territory currently is more than 90% urbanized and is expected to be fully urbanized in approximately eight to 10 years. The accompanying map depicts (in green) agricultural lands within SRP's water service territory as of 2008. Acreage in gold represents land that, within the last 10 years, is no longer used for agricultural purposes.



# ARIZONA-MEXICO COMMISSION CREATES WATER COMMITTEE

In 2007, the Arizona-Mexico Commission (AMC) and its Mexican counterpart, the Comision Sonora-Arizona (CSA), formed a water committee to address critical water resource issues in the Arizona-Sonora region. The committee is chaired by public and private sector representatives from Arizona and Sonora. The Arizona co-chairs are Herb Guenther, Director of the Arizona Department of Water Resources, and SRP's Dave Roberts, Manager, Water Rights and Contracts.

While this is the newest of the AMC committees, the committee already has achieved a number of accomplishments. These include: conducting an executive-level,

bi-national tour of the lower Colorado River water delivering infrastructure and sensitive habitats in the delta region; hosting workshops in Arizona and Sonora to share water management experiences; and undertaking a study to evaluate the potential for a developing bi-national desalination projects to benefit both Arizona and Sonora.

"The Water Committee provides an opportunity for representatives of Arizona and Sonora to share experiences and challenges in managing water supplies in the region," said Dave Roberts. "Both



states share common water resources and are faced with growing water resource issues. The solutions to these challenges will likely involve partnerships among a variety of regional interests and Sonora will no doubt be a key player in the process."

SRP has a long history of working cooperatively to solve water supply problems with entities in Arizona. With growing challenges in the region, working with the state of Sonora is a logical extension of our interest in working to address emerging challenges.

## QUAGGA MUSSEL UPDATE

The thumb-nail-sized quagga mussels continue to spread in the Southwestern states. In September 2008, adult mussels were found at the SRP-Central Arizona Project interconnect channel, and inspection of the interconnect siphon to the Arizona Canal revealed more of the invasive mussels.

The good news is that adults have not been found in the SRP canals or laterals, though monitoring continues. Mussel larvae (veligers) were found

in SRP canals, as expected, during water deliveries from the CAP canal. However, no quagga mussels or veligers have been found in the Salt or Verde reservoirs or rivers.

Establishment of these mussels in either the Salt or Verde reservoir systems would provide a constant source of veligers entering SRP canals and laterals, followed by increased maintenance costs. Sport fishing also may be impacted as the mussels filter algae and small organisms, which

are part of the food chain/supply that supports sport fish.

Currently there is no method or predator capable of eradicating these mussels once they become established in a water body. This makes prevention vital to the protection of our water resources. For information on what you can do to help prevent the spread of these invasive mussels, go to [www.ProtectYourWaters.net](http://www.ProtectYourWaters.net).