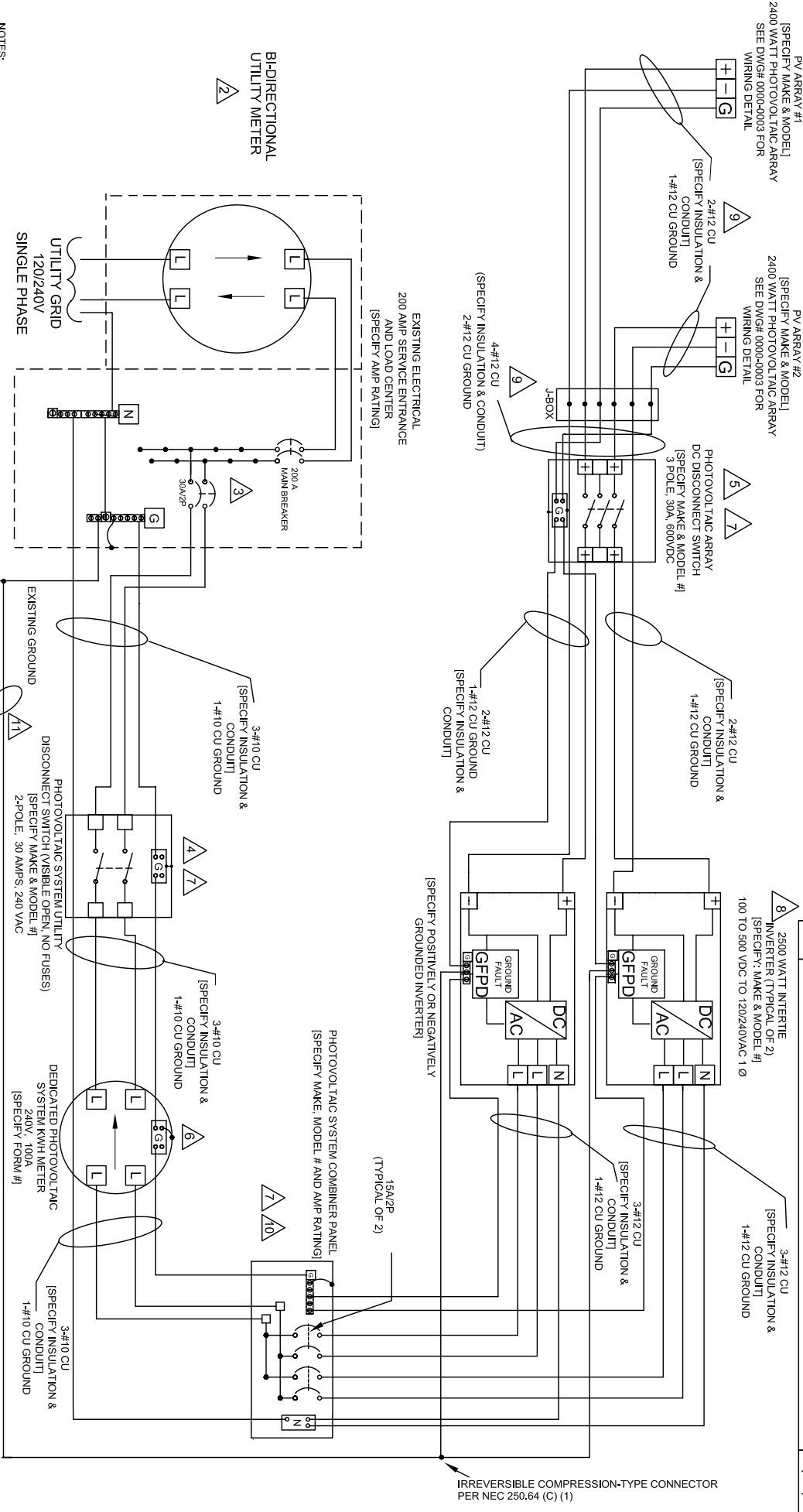


REV.	DESCRIPTION:	DATE
C	NOT FOR CONSTRUCTION	01/29/07



- NOTES:**
- EQUIPMENT SHALL BE INSTALLED IN ACCORDANCE WITH THE NEC AND ALL APPLICABLE REQUIREMENTS OF THE SERVING ELECTRIC UTILITY COMPANY AND OF THE LOCAL AUTHORITY HAVING JURISDICTION.
  - BI-DIRECTIONAL UTILITY METER TO BE INSTALLED BY UTILITY COMPANY (WHEN REQUIRED).
  - LABEL BREAKER PHOTOVOLTAIC ELECTRIC POWER SOURCE PER NEC 705.10 AND BREAKERS ARE BACKED PER NEC 90.64(B)(5). LABEL WITH THE MAXIMUM AC OUTPUT OPERATING CURRENT AND THE OPERATING VOLTAGE PER NEC 990.54.
  - LABEL UTILITY AC DISCONNECT SWITCH COVER TO BE LOCKED AT ALL TIMES.
  - LABEL PHOTOVOLTAIC ARRAY DC DISCONNECT SWITCH PER NEC 690.14(C)(2). LABEL WITH OPERATING CURRENT, OPERATING VOLTAGE, MAXIMUM SYSTEM VOLTAGE, AND SHORT CIRCUIT CURRENT PER NEC 690.53. SWITCH TO BE LOCKED PER NEC 690.70(I).
  - LABEL PV METER.
  - PROVIDE WARNING SIGN PER NEC 690.17 READING WARNING-ELECTRIC SHOCK HAZARDOUS. NOT TOUCH TERMINALS-TERMINALS ON BOTH LINE AND LOAD SIDES MAY BE ENERGIZED IN THE OFF POSITION.
  - LISTING AGENCY NAMES AND NUMBERS TO BE INDICATED ON POWER INVERTER.
  - METALLIC CONDUIT SHALL BE USED WITHIN BUILDING PER NEC 690.31(E).
  - LABEL DEDICATED PHOTOVOLTAIC SYSTEM COMBINER PANEL AND NO LOAD TO BE SERVED BY THIS PANEL.
  - GEC TO BE INSTALLED AS REQUIRED BY MANUFACTURER INSTRUCTIONS AND NEC 690.47.

**PHOTOVOLTAIC SYSTEM UTILITY DISCONNECT SWITCH (VISIBLE OPEN, NO FUSES)**  
 PHOTOVOLTAIC SYSTEM UTILITY DISCONNECT SWITCH (VISIBLE OPEN, NO FUSES)  
 2-POLE, 30 AMPS, 240 VAC

**PHOTOVOLTAIC SYSTEM COMBINER PANEL**  
 PHOTOVOLTAIC SYSTEM COMBINER PANEL  
 (SPECIFY MAKE, MODEL # AND AMP RATING)

**PHOTOVOLTAIC ARRAY DC DISCONNECT SWITCH**  
 PHOTOVOLTAIC ARRAY DC DISCONNECT SWITCH  
 (SPECIFY MAKE & MODEL #)  
 3 POLE, 30A, 600VDC

**UTILITY GRID**  
 UTILITY GRID  
 120/240V  
 SINGLE PHASE

**EXISTING ELECTRICAL**  
 200 AMP SERVICE ENTRANCE  
 AND LOAD CENTER  
 (SPECIFY AMP RATING)

**PHOTOVOLTAIC SYSTEM UTILITY DISCONNECT SWITCH (VISIBLE OPEN, NO FUSES)**  
 PHOTOVOLTAIC SYSTEM UTILITY DISCONNECT SWITCH (VISIBLE OPEN, NO FUSES)  
 2-POLE, 30 AMPS, 240 VAC

This Sample Drawing is for illustration purposes only and is not to be used for design or construction. This drawing and its suitability for end use is not implied. The intent is to only illustrate typical minimum information required at time of application to SRP. Additional information may be required.

**SAMPLE ELECTRICAL THREE - LINE DIAGRAM**

**ABC SOLAR COMPANY, INC.**

1334 South Main Street 4th Floor Phoenix, AZ 85123 Tel: 602-555-5555	THREE-LINE ELECTRICAL DIAGRAM
APPROVALS	DATE
DRAWN ABC	04-05-05
CHECKED	
ENGINEER	
M.G.R.	
REV. C	01-29-07
ABC PROJECT #1111-9999	SIZE CODE INTENT NO. DRAWING NO.
DO NOT SCALE DRAWINGS	SCALE NA REV. C SHEET 1 OF 1