



FY12 PowerWise
Standard Business Solutions
Program Manual

May 1, 2011

Contents

SECTION 1	INTRODUCTION.....	1-1
1.1	PROGRAM OVERVIEW	1-1
1.2	CONTACT INFORMATION	1-1
1.3	MANUAL USE AND ORGANIZATION.....	1-1
SECTION 2	ELIGIBILITY REQUIREMENTS	2-1
2.1	CUSTOMER ELIGIBILITY	2-1
2.2	MEASURE ELIGIBILITY	2-2
2.3	PROJECT EXPENSES	2-3
2.4	PROGRAM DATES	2-3
SECTION 3	REBATE INFORMATION.....	3-1
3.1	MEASURE REBATES.....	3-1
3.2	REBATE AVAILABILITY	3-1
SECTION 4	PROGRAM PARTICIPATION PROCESS.....	4-1
4.1	OVERVIEW	4-1
4.2	RETROFIT LIGHTING MEASURES	4-1
4.3	NON-RETROFIT LIGHTING MEASURES.....	4-4
APPENDIX A	EXAMPLE CUSTOMER FORMS	A-1
APPENDIX B	ALLIANCE CONTRACTOR APPLICATION.....	B-1
APPENDIX C	SRP ENERGY EFFICIENCY PROGRAMS	C-1
APPENDIX D	RESOURCES	D-1
APPENDIX E	FREQUENTLY ASKED QUESTIONS.....	E-1
APPENDIX F	SRP SERVICE AREA MAP.....	F-1

1.1 PROGRAM OVERVIEW

PowerWise Standard Business Solutions, offered by Salt River Project (SRP), promotes the purchase of eligible high-efficiency equipment installed at qualifying customer facilities. Rebates promoted through this program serve to reduce the incremental cost of upgrading to high-efficiency equipment, for SRP customers, above the cost of standard efficiency options. The program offers customer rebates for a variety of measures including high-efficiency lighting equipment, HVAC equipment, premium efficiency motors, variable frequency drives, refrigeration equipment, and compressed air measures. Rebates for qualifying measures are available for new construction and retrofit applications.

1.2 CONTACT INFORMATION

SRP has retained Nexant, Inc. as the Program Administrator for the PowerWise Standard Business Solutions program. Questions about the program can be directed to the Program Administrator via:

- Web
 - www.savewithsrpbiz.com
- Telephone
 - Customer informational hotline: (602) 236-3054
 - Lighting Alliance Contractor direct line: (602) 236-1616
 - Non-Lighting Alliance Contractor direct line: (602) 236-1611
- Fax
 - (480) 345-7601
- Email
 - Customer inquiries: savewithsrpbiz@srpnet.com
 - Lighting Alliance Contractor inquiries: LightingAlliance@srpnet.com
 - Mechanical Alliance Contractor inquiries: MechanicalAlliance@srpnet.com
- Mail
 - SRP PowerWise Standard Business Solutions
 - PMB # 192
 - 4802 E Ray Rd Ste 23
 - Phoenix, AZ 85044-6417

1.3 MANUAL USE AND ORGANIZATION

This program manual is designed for use by customers, contractors, architecture and engineering firms, energy services companies, and equipment manufacturers, outlines the rules and requirements of PowerWise Standard Business Solutions. The manual is organized as follows:

- Section 2 – Addresses customer, measure, and cost eligibility requirements
- Section 3 – Discusses rebate information
- Section 4 – Outlines program participation steps

Sample program submittal forms, frequently asked questions, and other general program support information are contained in appendices at the end of this manual.

2.1 CUSTOMER ELIGIBILITY

To participate in PowerWise Standard Business Solutions, a customer must install qualifying measures in a facility on an SRP non-residential retail electric price plan. Table 2-1 lists eligible customer price plans.

Table 2-1: Eligible Price Plans for PowerWise Standard Business Solutions

Description	Price Plan
Time-of-Use General Service	E-32
M-Power for Pre-Pay General Service	E-34
Standard General Service	E-36
Standard Pumping Service	E-47
Time-of-Week Pumping Service	E-48
Standard Large General Service	E-61
Primary Large General Service	E-63
Substation Large General Service	E-65
Substation Large General Service with Interruptible Load	E-66

Customers can verify their price plan by looking on a recent bill. Figure 2.1 shows where to find the price plan and account number on a typical SRP customer bill. Customers with questions regarding their account should contact the Program Administrator or their SRP Account Manager.

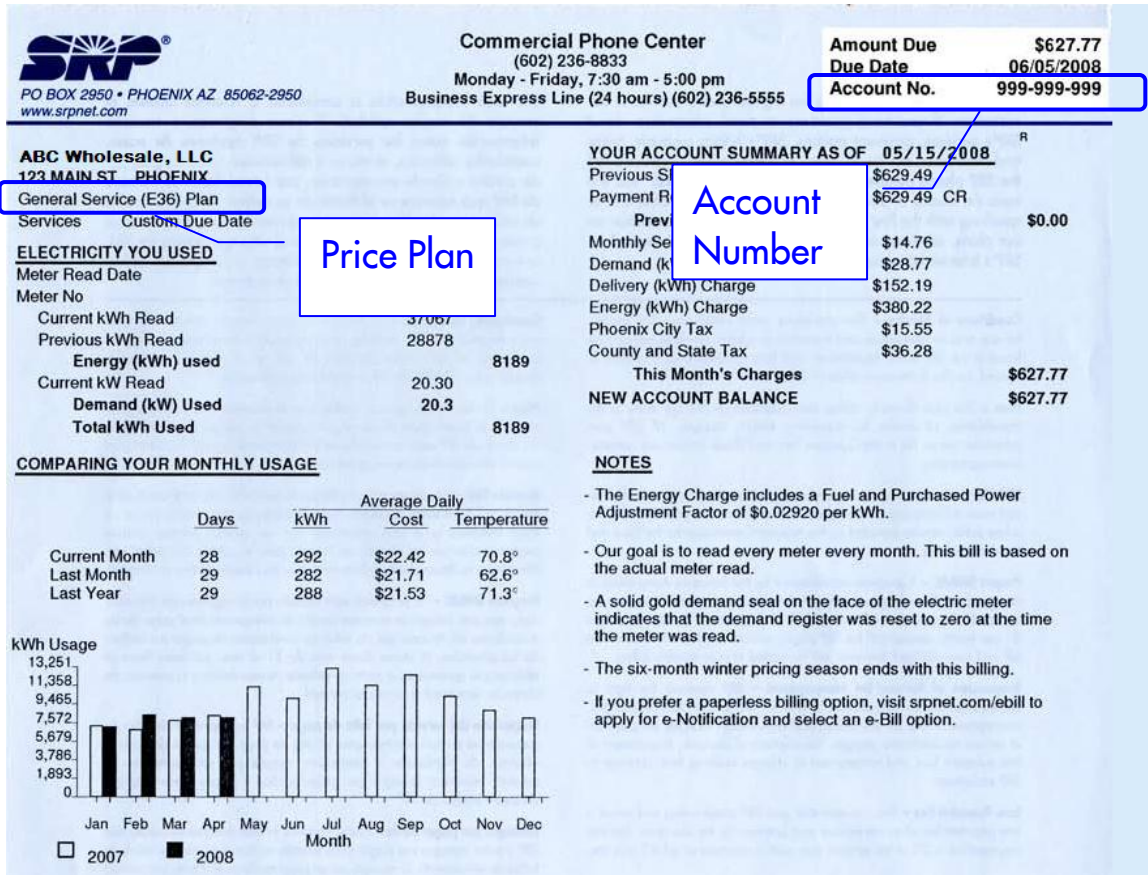


Figure 2.1: Representative SRP Electric Bill

For the purposes of SRP’s energy efficiency programs, a customer is defined as a company or organization that receives electric service from SRP under an approved SRP price plan. A customer is a holder of a single account, multiple accounts in aggregate or corporate accounts. Multiple accounts or corporate accounts with a single SRP customer identification number will be considered a single customer. An organization of this type can participate in multiple efficiency programs, but will be subject to any applicable customer rebate caps.

SRP retains the right to make final determination of customer eligibility.

2.2 MEASURE ELIGIBILITY

PowerWise Standard Business Solutions offers rebates for a variety of measures as shown in Table 2-2.

Table 2-2: PowerWise Standard Business Solution Measures

<p>Lighting</p> <ul style="list-style-type: none"> Lighting equipment Occupancy sensor <p>Refrigeration</p> <ul style="list-style-type: none"> Anti-sweat heater controls Auto-closers Door gaskets Evaporator fan controllers Fast-acting doors High-efficiency doors High-efficiency display cases Night covers Strip curtains 	<p>HVAC</p> <ul style="list-style-type: none"> Unitary AC and HP PTAC/PTHP Chillers <p>Motors</p> <ul style="list-style-type: none"> Premium efficiency Electronically commutated motors VFDs <p>Compressed Air</p> <ul style="list-style-type: none"> Low pressure drop filters Zero loss condensate drains Storage capacity Refrigerated cycling dryers VFD compressors
---	---

Specific details regarding measure eligibility requirements are provided in the Standard Business Solution Equipment Catalogs. Sample copies are included in Appendix A of this manual. Please visit www.savewithsrpbiz.com, contact a participating Alliance Contractor, or contact the Program Administrator for the most recent copies of the Equipment Catalogs.

2.3 PROJECT EXPENSES

Customers are required to submit a copy of a dated receipt or invoice for the purchased and installed equipment to verify the date of installation.

2.4 PROGRAM DATES

PowerWise Standard Business Solutions became effective on May 1, 2011. Applications for post purchase measures must be received no later than July 31, 2012 to be eligible for rebates under the FY12 program (subject to rebate availability). Qualifying equipment purchased and installed on or after this date is eligible for rebates. As explained further in Section 4, all retrofit lighting applications require pre-approval from SRP before purchase and/or installation. FY12 PowerWise Business Solutions rebates are not eligible for measures purchased or installed prior to May 1, 2011 or without necessary approvals.

2.5 MEASURE SAVINGS

Only the rebate for lighting measures is based on the amount of demand reduction achieved through measure installation. Calculation of demand reduction differs for retrofit and new construction lighting projects. Descriptions of the calculation methods are described below.

Lighting – Retrofits

Demand reduction is found by subtracting the approved fixture wattage from the baseline fixture wattage. The baseline fluorescent lighting equipment in retrofit applications will be a T-12 ES lamp (34-watt) with an energy efficient magnetic ballast, or the efficiency of the existing equipment, whichever is higher. This baseline is set by Energy Policy Act of 1992 standards for fluorescent lamps and National Appliance Energy Conservation Act standards for ballasts. Approved fixture wattages are contained in the Retrofit Lighting Workbook and will not be subject to modification.

Lighting – New Construction

Demand reduction is found by subtracting the proposed total installed fixture wattage from the baseline building wattage. Baseline lighting power densities for new construction projects will be established from the lighting power densities by building type from ASHRAE 90.1 – 2004 and shown in Table 2.3. Proposed fixture wattages will be taken from approved wattages contained in the New Construction Lighting Workbook and will not be subject to modification. Equipment installed in facilities containing more than one building type may submit a Lighting Workbook for each building type that the facility occupies.

Table 2.3 ASHRAE 90.1 – 2004 Lighting Power Densities by Building Area Type

Building Area Type	W/ft²	Building Area Type	W/ft²
Automotive Facility	0.9	Multi-Family	0.7
Convention Center	1.2	Museum	1.1
Court House	1.2	Office	1.0
Dining: Bar Lounge/Leisure	1.3	Parking Garage	0.3
Dining: Cafeteria/Fast Food	1.4	Penitentiary	1.0
Dining: Family	1.6	Performing Arts Theater	1.6
Dormitory	1.0	Police/Fire Station	1.0
Exercise Center	1.0	Post Office	1.1
Gymnasium	1.1	Religious Building	1.3
Healthcare-Clinic	1.0	Retail	1.5
Hospital	1.2	School/University	1.2
Hotel	1.0	Sports Arena	1.1
Library	1.3	Town Hall	1.1
Manufacturing Facility	1.3	Transportation	1.0
Motel	1.0	Warehouse	0.8
Motion Picture Theater	1.2	Workshop	1.4

3.1 MEASURE REBATES

Customers will be issued rebates for the installation of qualifying equipment according to the payment structure detailed below. Customers will be subject to a maximum rebate of \$200,000 per program year from FY12 PowerWise Standard Business Solutions, and an overall rebate cap of \$300,000 per customer per program year from all PowerWise Business Solutions programs offered by SRP. The FY12 Program Year is from May 1, 2011 through April 30, 2012. SRP reserves the right to waive or adjust the rebate caps on a case by case basis and determine at their sole discretion the program year to which a rebate is attributed.

Specific details regarding available measure rebate levels are provided in the Equipment Catalogs. Sample copies are included in Appendix A of this manual. Please visit www.savewithsrpbiz.com, contact a participating Alliance Contractor, or contact the Program Administrator for the most recent copies of the Equipment Catalogs.

3.2 REBATE AVAILABILITY

For retrofit lighting projects, final rebate amounts cannot exceed 120% of the estimated rebate approved with the Retrofit Lighting Workbook. Any final rebate amounts between 100% and 120% of the rebate amount approved with the Retrofit Lighting Workbook will be subject to rebate availability.

Rebate requests will be reviewed on a first-come, first-served basis until all rebate funding has been committed. Customers requesting rebates after reservation of available funding will be given the option to be placed on a waiting list in the order requests were received by SRP. Current availability of rebate funds can be checked at www.savewithsrpbiz.com or by contacting the Program Administrator.

4.1 OVERVIEW

This section provides information on participating in PowerWise Standard Business Solutions including the program process, required submittals, and milestones. Participants may submit applications beginning on May 1, 2011 on a first-come, first-served basis. SRP will continue to accept applications for the program until all funds have been committed. After that time, submitted applications will be placed on a waiting list until additional rebate funding may become available. Information about the availability of current rebate funding is available by contacting the Program Administrator or online at www.savewithsrpbiz.com.

There are two general participation procedures for PowerWise Standard Business Solutions – one for retrofit lighting measures, and one for non-retrofit lighting measures. Table 4-1 provides a summary of these two participation processes. Detailed information about each participation process is provided in the balance of this section.

Table 4-1: PowerWise Standard Business Solutions Customer Participation Overview

Participation Steps	Retrofit Lighting	Non-Retrofit Lighting Measures
Step 1	<i>Optional:</i> Submit a Rebate Reservation Request	<i>Optional:</i> Rebate Reservation Request
Step 2	Submit Retrofit Lighting Workbook	Purchase and install eligible measure(s)
Step 3	Purchase and install eligible measure(s) after approval by SRP	Submit Rebate Application or New Construction Lighting Workbook
Step 4	Notify SRP of measure installation	

Prior to participation, customers identify an energy efficiency opportunity. Circumstances that may indicate an energy savings opportunity include:

- Unusually high energy bills when compared to similar buildings,
- Old equipment or inadequate controls,
- Frequent occupant comfort complaints,
- Excessive and/or recurring maintenance costs,
- Excessive noise or heat emitting from the lighting systems, or
- Mixed colors and lamp types, and general lack of uniformity in the lighting system.

Customers are advised to review the comprehensive suite of SRP's program offerings to identify the most appropriate offering to meet their needs. A brief overview of available program offerings is presented in Appendix C of this manual. All program questions can be directed to the Program Administrator. A listing of Alliance Contractors with experience in identifying project opportunities is available online at www.savewithsrpbiz.com or by contacting the Program Administrator. To be listed as an Alliance Contractor, interested firms should contact the Program Administrator and request an application. A sample Alliance Contractor application is provided in Appendix B of this manual.

4.2 RETROFIT LIGHTING MEASURES

Customers with eligible lighting retrofit measures can participate in PowerWise Standard Business Solutions by adhering to the following basic steps:

- Step 1: (*Optional*): Submit a Rebate Reservation Request

- Step 2: Prepare and submit a Retrofit Lighting Workbook (**Note: Customers that purchase, or agree to purchase by signing a purchase order or contract, or install lighting equipment prior to receiving approval of the Retrofit Lighting Workbook from SRP will not be eligible for participation or rebates**)
- Step 3: Purchase and install the qualifying measures after approval from SRP
- Step 4: Notify SRP of measure installation and submit measure documentation

Figure 4.1 shows a graphical representation of the participation process for retrofit lighting measures. Additional information about each step is summarized below.

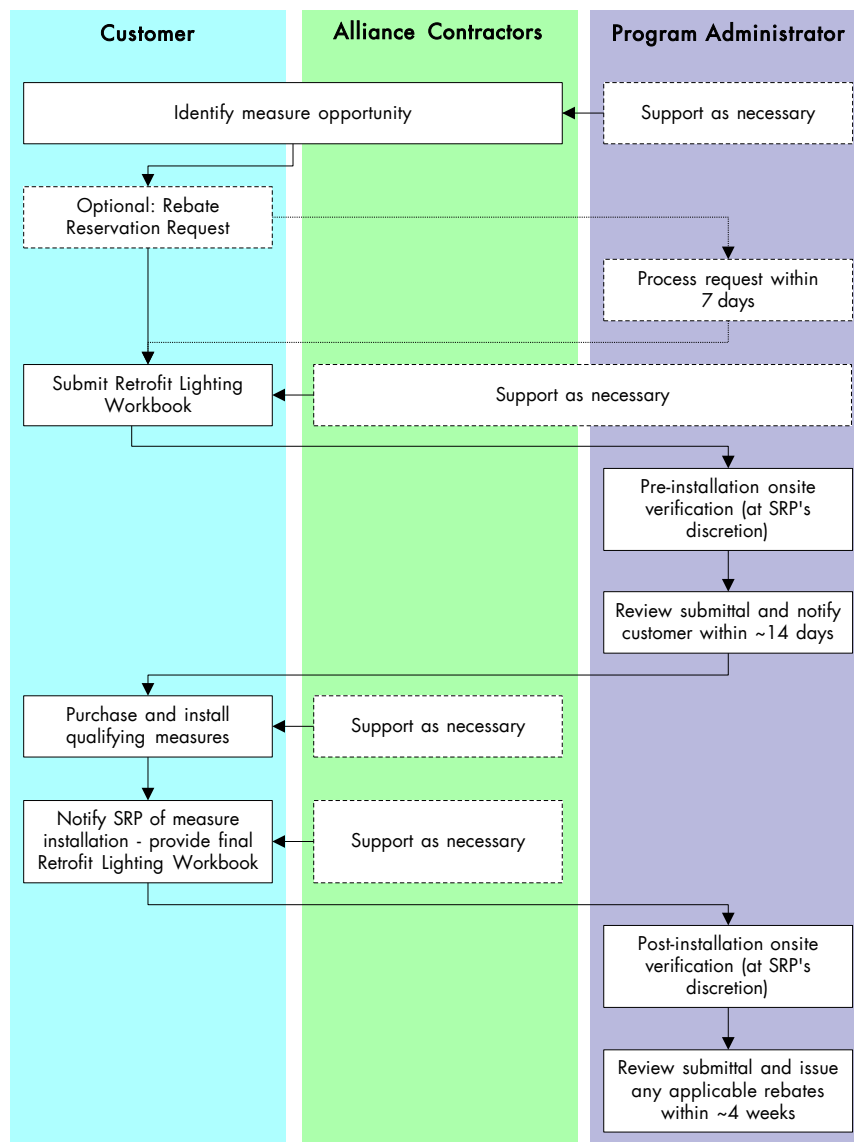


Figure 4.1: Participation Process for Retrofit Lighting Measures

Step 1 (Optional) – Submit a Rebate Reservation Request

Rebate funding for PowerWise Standard Business Solutions is limited and will be paid on a first-come, first-served basis. For current rebate availability, please contact the Program Administrator or check online at www.savewithsrpbiz.com.

To verify customer eligibility and reserve rebate funding for the project, customers have the option of submitting a Rebate Reservation Request prior to submitting a completed Retrofit Lighting Workbook. The Rebate Reservation Request requires the following information:

- Identification of the customer site(s) and customer account number(s)
- Description of the proposed scope of retrofit lighting measures and expected savings

Rebate Reservation Requests will be reviewed on a first-come, first-served basis until all rebate funding has been committed. SRP will review the rebate request and notify the customer of its status. Funding will be reserved retrofit lighting measures for 60 days to allow the customer to finalize project details and submit the Retrofit Lighting Workbook. Rebates associated with measures identified and approved in the Retrofit Lighting Workbook may exceed the amount reserved by this process subject to funds availability and rebate limitations outlined in Section 3.1.

Customers will typically be notified of the status of Rebate Reservation Requests by the Program Administrator within seven (7) days of receipt of a completed request.

Step 2 – Submit a Retrofit Lighting Workbook

Customers must submit a completed electronic copy of the Retrofit Lighting Workbook and signed copy of the Customer Terms and Agreement (presented in the workbook) to the Program Administrator **before** signing a purchase order/contract or installing any lighting measures.

Upon submittal, SRP will review the eligibility of the proposed measures. The workbook is a Microsoft® Excel-based application available for download online at www.savewithsrpbiz.com, by contacting the Program Administrator, or from participating lighting Alliance Contractors. The workbook requests the following information:

- Identification of the host customer site(s) and the SRP account number(s)
- Third-party rebate release information should the customer elect to have the rebate paid to a third-party
- Information about the installation site such as primary use and size
- Baseline and proposed lighting measures including location, type, and quantity
- Customer acceptance of terms and conditions

Additional information is available in the Equipment Catalog, which identifies equipment eligibility, rebate amounts, and any equipment specific instructions for application submittal including additional documentation. The Equipment Catalog is available for download online at www.savewithsrpbiz.com, by contacting the Program Administrator, or from participating Alliance Contractors.

SRP may request clarification or additional information (including, but not limited to, manufacturer's specification sheets demonstrating equipment to be installed complies with the program requirements) if necessary to complete the review process. Customers will have 14 days to respond to such requests. If the clarification or additional information is not forthcoming, SRP may choose to discontinue its evaluation and reject the measure(s).

SRP may also conduct an inspection of the existing equipment at their sole discretion to verify the information submitted in the Retrofit Lighting Workbook. The pre-installation inspection requires the presence of at least one representative of the customer who is familiar with the proposed measures and the facility so that all parties can identify any discrepancies. If the inspection cannot be completed in a timely manner because the representative(s) is unfamiliar with the facility or measures, the project site will fail the inspection.

Customers that purchase, or agree to purchase by signing a purchase order or contract, or install retrofit lighting measures prior to receiving approval of the Retrofit Lighting Workbook from SRP will not be eligible for rebates.

SRP will target completing review activities within 14 days of receiving a completed Retrofit Lighting Workbook and any subsequently requested supporting information. Customer will be notified regarding approval or rejection at the time. Approval of the Retrofit Lighting Workbook will also result in a reservation of rebate funding, subject to funds availability and rebate limitations outlined in Section 3.1, for 90 days.

Step 3 – Purchase and Install Qualifying Measures

After receiving approval from the Program Administrator, customers may purchase and install qualifying lighting measures. Please note: rebates will not be paid for any variation in approved measures and/or increase in number of installed measures without prior written approval from the Program Administrator. Availability of reserved rebate funding will only be guaranteed for 90 days unless otherwise noted in writing by the Program Administrator.

Step 4 – Notify SRP of Measure Installation

After installation, customers must notify the Program Administrator and submit an updated version of the Retrofit Lighting Workbook reflecting actual installed measures and a copy of dated paid invoice(s) for equipment and installation. Rebate availability for measures not installed and reported back to SRP within 90 days of measure approval will not be guaranteed. Final rebate amounts cannot exceed 120% of the estimated rebate approved with the Retrofit Lighting Workbook. Any final rebate amounts between 100% and 120% of the rebate amount approved with the Retrofit Lighting Workbook will be subject to rebate availability.

Upon submittal, SRP will review the final installed measures. SRP may request clarification or additional information (including, but not limited to, manufacturer's specification sheets demonstrating equipment to be installed complies with the program requirements), if necessary, to complete the review process. Customers will have 14 days to respond to such requests. If the clarification or additional information is not forthcoming, SRP may choose to discontinue its evaluation and reject the measure(s).

SRP may also conduct an inspection of the installed lighting measures, at their sole discretion, to verify the information submitted in the Retrofit Lighting Workbook. The post-installation inspection requires the presence of at least one representative of the customer who is familiar with the installed measures and the facility so that all parties can identify any discrepancies. If the inspection cannot be completed in a timely manner because the representative(s) is unfamiliar with the facility or measures, the project site will fail the inspection. SRP will also retain the right to inspect the installed measure(s) up to two years following installation.

SRP will target completing review activities and issuing rebate payments for any approved measure(s) within four (4) weeks of receiving notice of measure installation, final Retrofit Lighting Workbook, and any subsequently requested supporting information from the customer.

4.3 NON-RETROFIT LIGHTING MEASURES

Customers with eligible non-retrofit lighting measures can participate in PowerWise Standard Business Solutions by adhering to the following basic steps:

- Step 1: (Optional): Submit a Rebate Reservation Request
- Step 2: Purchase and install the qualifying measures after approval from SRP
- Step 3: Submit a Rebate Application or New Construction Lighting Workbook

Figure 4.2 shows a graphical representation of the participation process for non-retrofit lighting measures. Additional information about each step is summarized below.

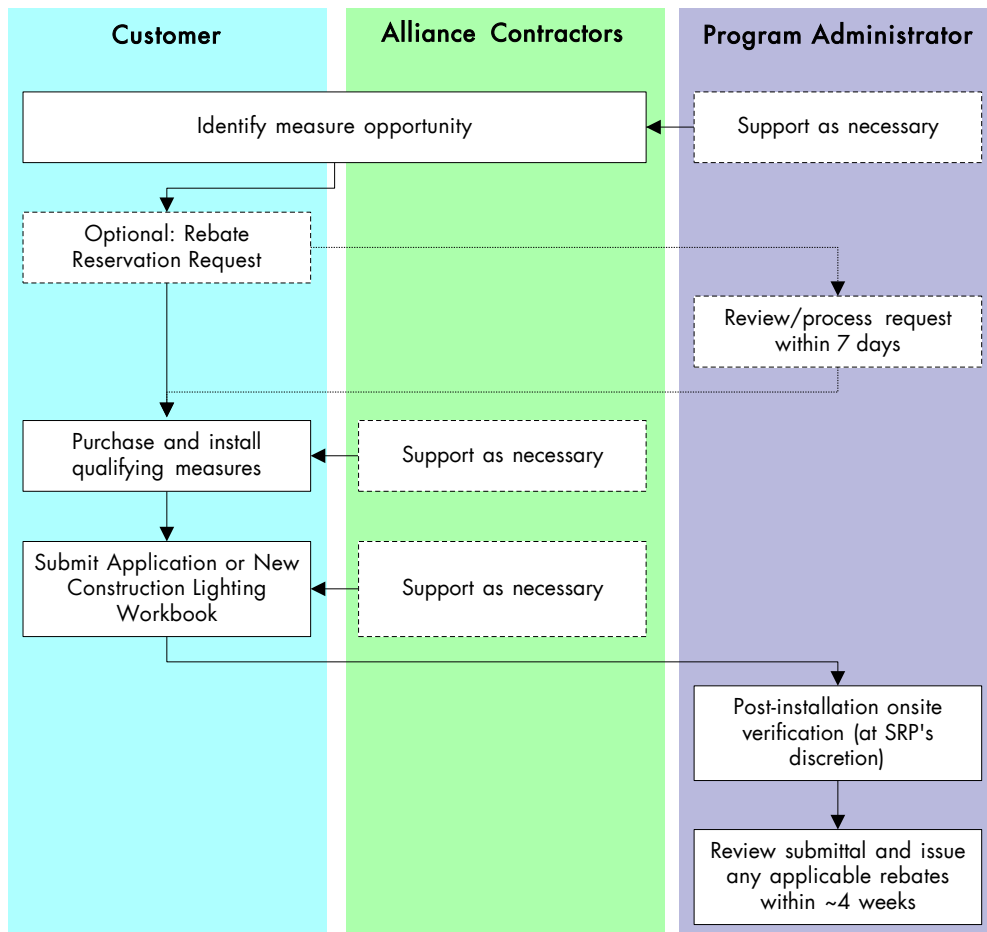


Figure 4.2: Participation Process for Non-Retrofit Lighting Measures

Step 1 (Optional) – Submit a Rebate Reservation Request

Rebate funding for PowerWise Standard Business Solutions is limited and will be paid on a first-come, first-served basis. For current rebate availability, please contact the Program Administrator or check online at www.savewithsrpbiz.com.

To verify customer eligibility and reserve rebate funding for the project, customers have the option of submitting a Rebate Reservation Request prior to purchasing and installing eligible non-retrofit lighting measures. The Rebate Reservation Request requests the following information:

- Identification of the customer site(s) and customer account number(s)

- Description of the proposed measure(s) and expected savings

Rebate Reservation Requests will be reviewed on a first-come, first-served basis until all rebate funding has been committed. SRP will review the rebate request and notify the customer of the review results. Funding will be reserved for non-retrofit lighting measures for 90 days to allow the customer to purchase and install qualifying measures.

Customers will typically be notified of the status of Rebate Reservation Requests by the Program Administrator within seven (7) days of receipt of a completed request.

Step 2 – Purchase and Install Qualifying Measures

Customers are responsible for the purchase and installation of qualifying measures. A listing of approved Alliance Contractors that can help support this process is available online at www.savewithsrpbiz.com.

Step 3 – Submit Rebate Application or New Construction Lighting Workbook

For HVAC, motor, VFD, Refrigeration, and compressed air measures customers must submit a completed Rebate Application. For new construction lighting measures, customers must submit a completed electronic copy of the New Construction Lighting Workbook and signed copy of the Customer Terms and Agreement (presented in the workbook) to the Program Administrator. A dated copy of the invoice(s) for equipment and installation is also required for all measure types.

The New Construction Lighting Workbook is a Microsoft® Excel-based application. The Rebate Application is a hard-copy file. Both are available for download online at www.savewithsrpbiz.com, by contacting the Program Administrator, or from participating Alliance Contractors. Both items request the following information:

- Identification of the host customer site(s) and the SRP account number(s)
- Third-party rebate release information should the customer elect to have the rebate paid to a third-party
- Information about the installation site such as primary use and size
- Baseline and installed measures including location, efficiency, size, type, quantity, and nameplate data
- Customer acceptance of terms and conditions

Additional information is available in the Equipment Catalogs, which identifies equipment eligibility, rebate amounts, and any equipment specific instructions for application submittal including additional documentation. Sample copies are included in Appendix A of this manual. Please visit www.savewithsrpbiz.com, contact a participating Alliance Contractor, or contact the Program Administrator for the most recent copies of the Equipment Catalogs.

Upon submittal, SRP will review the final installed measures. SRP may request clarification or additional information (including, but not limited to, manufacturer's specification sheets demonstrating equipment to be installed complies with the program requirements) if necessary to complete the review process. Customers will have 14 days to respond to such requests. If the clarification or additional information is not forthcoming, SRP may choose to discontinue its evaluation and reject the measure(s).

SRP may also conduct an inspection of the installed measure(s) at their sole discretion to verify the information submitted by the customer. The post-installation inspection requires the presence of at least one representative of the customer who is familiar with the installed measure(s) and the facility so that all parties can identify any discrepancies. If the inspection cannot be completed in a timely manner because the representative(s) is unfamiliar

with the facility or measure(s), the project site will fail the inspection. SRP will also retain the right to inspect the installed measure(s) up to two years following installation.

Measures not installed and reported back to SRP within 90 days of an approved Rebate Reservation Request are subject to rebate availability and rebate limitations outlined in Section 3.1. SRP will target completing review activities and issuing rebate payments for any approved measure(s) within four (4) weeks of receiving a completed Rebate Application or New Construction Lighting Workbook, and any subsequently requested supporting information from the customer.

Sample copies of the Equipment Catalogs, Rebate Reservation Request, and Rebate Application are provided in this Appendix. Please contact the Program Administrator or check online at www.savewithsrpbiz.com for the most recent versions of these materials.



Rebate Reservation Request

Customer Information

Business name (as it appears on SRP Bill)

SRP Account number(s) where measure(s) to be installed

Address where measure(s) to be installed City State Zip

Customer contact name Contact phone number Contact fax number Contact Email

Mailing address (if different from the installation address) City State Zip

Measure Information

Installation type: Retrofit New Construction

Estimated measure installation date: _____

If rebate funds are not available, do you wish to be placed on a waiting list? Yes No

Efficiency measures (attach additional sheets as necessary)

Parameter	Measure 1	Measure 2	Measure 3
Measure type ¹ :			
Quantity			
Estimated Rebate			

¹ Eligible choices include: HVAC, Motor, VFD, Refrigeration, or Compressed Air

Lighting Measures

Estimated Installed Demand Reduction (kW): _____

Please provide a brief description of how lighting demand savings were estimated:

Terms and Conditions

Salt River Project (SRP) is implementing PowerWise Standard Business Solutions to provide eligible customers with rebates to facilitate the installation of qualifying energy efficient equipment. Rebates will be reserved on a first-come, first-served basis for approved requests. This Rebate Reservation Request allows customers:

1. To request rebates be reserved for up to 60 days to allow for the submittal of a completed Retrofit Lighting Workbook for planned retrofit lighting measures. A Retrofit Lighting Workbook must be completed and submitted for approval **prior** to measure purchase and installation.
2. To request rebates be reserved for up to 90 days to allow for the purchase, installation, and submittal of a completed New Construction Lighting Workbook for eligible new construction lighting measures.
3. To request rebates be reserved for up to 90 days to allow for the purchase, installation, and submittal of a completed Rebate Application for eligible HVAC, motor, VFD, compressed air, or refrigeration measures.

Approved rebate reservation amounts will expire according to the schedule outlined above unless alternative timelines are approved in writing by the Program Administrator. Additional rebate funds for qualifying measures will be based on funding availability and rules. Allow seven (7) days for processing and notification of rebate reservation status.

Customer Signature _____

By signing below, applicant acknowledges the following:

- I have read and understand all Terms and Conditions of this form and the customer eligibility, measure eligibility, and participation procedures for SRP's PowerWise Standard Business Solutions program in the Program Manual.
- I certify that all the information contained within is true and factual.
- As the signatory, I have the authority to approve installation of identified measure(s).
- By typing my name in the signature space below, I understand this is my electronic signature, and I agree this will represent the same as my handwritten signature.

Business Name _____

Signature _____ Date _____

Name (please print) _____

Title _____

SEND COMPLETED REBATE RESERVATION REQUESTS TO:

SRP PowerWise Standard Business Solutions

PMB 192

4802 E Ray Rd Ste 23

Phoenix, AZ 85044-6417

Fax: (480) 345-7601

Email: savewithsrpbiz@srpnet.com



Rebate Application Instructions

This application packet contains the forms and instructions necessary for participation in the SRP PowerWise Standard Business Solutions program.

This application packet contains the following parts:

- General Information
- Terms and Conditions
- Rebate Worksheet

To participate in this rebate program, please review the following steps:

1. **Read** the Terms and Conditions included in this packet.
2. **Complete** the optional Rebate Reservation Request available for download at www.savewithsrpbiz.com and submit it to SRP to reserve rebate funding. This step is recommended to ensure funding will be available upon project completion.
3. **Purchase and Install** qualifying equipment after May 1, 2011. Equipment descriptions and eligibility specifications are provided in the Equipment Catalogs and Program Manual available online at www.savewithsrpbiz.com.
4. **Complete** the following forms included with this Rebate Application:
 - **General Information** – Include all required customer and account information.
 - **Rebate Payment Information** – Indicate where eligible rebate checks should be mailed.
 - **Rebate Worksheet** – Include all required product information including: product type, install date, dealer name, manufacturer, model number(s), efficiency, size, quantity, and rebate amount. Dealers or contractors may assist with the completion of the rebate worksheet.
5. **Sign** the following documents contained in this Rebate Application:
 - **Terms and Conditions** – Signing this form accepts the terms and conditions of this rebate program.
6. **Retain** a copy of all completed application forms and all required documentation, such as invoices and contracts. Submitted applications will become the property of SRP.
7. **Submit** the completed forms and required documentation no later than July 31, 2012 to:

SRP PowerWise Standard Business Solutions
PMB 192
4802 E Ray Rd Ste 23
Phoenix, AZ 85044-6417
Fax: (480) 345-7601
Email: savewithsrpbiz@srpnet.com

For More Information. For more information about the PowerWise Standard Business Solutions program, measure eligibility, rebates, or other SRP programs please contact us:

- Online at www.savewithsrpbiz.com
- By phone at (602) 236 – 3054
- By email at savewithsrpbiz@srpnet.com

General Information

Important: Please allow 14 days for application review following complete documentation submittal. Rebates will not be paid for ineligible or incomplete applications.

Business name (as it appears on SRP Bill)

SRP Account number(s) where measure(s) to be installed

Address where measure(s) to be installed City State Zip

Federal Tax Id Number (must be 9 digits) Corporation Partnership Sole Proprietor/Individual LLC Other: _____
 Business Classification (Check ONE. Required for all businesses, including non-profits)

Contact name Contact phone number Contact fax number Email

Contact address (if different from the installation address) City State Zip

Mail rebate check to: Billing Address Installation Address Contact Address Other (Complete release below)

How did you hear about SRP's PowerWise Standard Business Solutions? If other, please specify:

Building Information

Primary building use:

- | | | |
|--|--|--|
| <input type="checkbox"/> Automotive Facility | <input type="checkbox"/> Hotel | <input type="checkbox"/> Police/Fire Station |
| <input type="checkbox"/> Convention Center | <input type="checkbox"/> Library | <input type="checkbox"/> Post Office |
| <input type="checkbox"/> Court House | <input type="checkbox"/> Manufacturing Facility | <input type="checkbox"/> Religious Building |
| <input type="checkbox"/> Dining: Bar Lounge/Leisure | <input type="checkbox"/> Motel | <input type="checkbox"/> Retail |
| <input type="checkbox"/> Dining: Cafeteria/Fast Food | <input type="checkbox"/> Motion Picture Theater | <input type="checkbox"/> School/University |
| <input type="checkbox"/> Dining: Family | <input type="checkbox"/> Multi-Family Housing | <input type="checkbox"/> Sports Arena |
| <input type="checkbox"/> Dormitory | <input type="checkbox"/> Museum | <input type="checkbox"/> Town Hall |
| <input type="checkbox"/> Exercise Center | <input type="checkbox"/> Office | <input type="checkbox"/> Transportation |
| <input type="checkbox"/> Gymnasium | <input type="checkbox"/> Parking Garage | <input type="checkbox"/> Warehouse |
| <input type="checkbox"/> Health Care - Clinic | <input type="checkbox"/> Penitentiary | <input type="checkbox"/> Workshop |
| <input type="checkbox"/> Hospital | <input type="checkbox"/> Performing Arts Theater | <input type="checkbox"/> Other _____ |

Building Size (sq. ft.): _____

Number of Floors: _____

Year Built: _____

Percent Conditioned: _____

Operating Hours: _____

Temperature Set-points:

	Heating	Cooling
Occupied	_____ °F	_____ °F
Un-occupied	_____ °F	_____ °F

Payment Release Information

Important: Complete this section only if rebate payment is to be directed to someone other than the customer indicated above.

I AM AUTHORIZING THIS REBATE PAYMENT TO THE THIRD PARTY NAMED BELOW AND I UNDERSTAND THAT I WILL NOT BE RECEIVING THE REBATE PAYMENT CHECK FROM SRP. I ALSO UNDERSTAND THAT MY RELEASE OF PAYMENT TO THE THIRD PARTY DOES NOT EXEMPT ME FROM THE REBATE REQUIREMENTS OUTLINED IN THE APPLICATION. I ALSO ACKNOWLEDGE THAT ASSIGNMENT OF APPLICABLE REBATES TO ANOTHER PARTY MAY NOT AFFECT MY TAX LIABILITY FOR REBATES PAID BY THE PROGRAM.

Please note, requests for payment release must be signed in ink by authorized individual.

Authorized by (please print) _____ Signature of Authorized _____ Date _____

Check should be made payable to:

Payee: business name _____ Contact phone number _____

Payee mailing address _____ City _____ State _____ Zip _____

Terms and Conditions

Important: This form is to be read, signed and submitted with the Rebate Application.

SRP is implementing the PowerWise Standard Business Solutions program to provide customers with rebates to facilitate the installation of qualifying energy efficient equipment. The following terms and conditions apply to the program:

1. To qualify for rebates through the PowerWise Standard Business Solutions program, the participant must:
 - a. Be a current SRP non-residential retail electric customer.
 - b. Submit a completed Rebate Application and any supplemental documentation that may be requested to verify energy efficiency measures.
 - c. Purchase, install and commission qualifying equipment as specified in the PowerWise Standard Business Solutions Program Manual and/or as instructed by SRP.
 - d. Abide by the program rules, eligibility requirements, and rebate levels in effect at the date of equipment installation.
 - e. Provide a valid tax identification number.
2. Failure to provide any of the required information, including signatures, forms, or other requested documentation, will result in the return of the Rebate Application.
3. Rebates requested by the Rebate Application may exceed the amount reserved by the Rebate Reservation Request only when funds remain in the program budget and no projects have been placed on a waitlist for program participation.
4. One rebate check will be issued per approved Rebate Application to the person specified on the application.
5. Qualifying equipment as defined in the Program Manual receiving rebates under the PowerWise Standard Business Solutions program may not receive purchase and installation rebates or credits under any other SRP programs.
6. For the purposes of SRP's energy efficiency programs, a customer is defined as a company or organization that receives electric service from SRP under an approved SRP price plan. A customer is a holder of a single account, multiple accounts in aggregate or corporate accounts. Multiple accounts or corporate accounts with a single SRP customer identification number will be considered a single customer. An organization of this type can participate in multiple efficiency programs, but will be subject to any applicable customer rebate caps. SRP retains the right to make final determination of customer eligibility.
7. Customers will be limited to \$200,000 in rebates for measures installed and approved by April 30, 2012 through the FY12 PowerWise Standard Business Solutions program, and an overall rebate cap of \$300,000 per customer from participation in all FY12 PowerWise Business Solutions energy efficiency programs offered by SRP. SRP and its agents will not be responsible for any tax liability imposed on the customer as a result of the payment of rebates.
8. SRP reserves the right to inspect the installed equipment for compliance with the program requirements. Inspection may include a telephone survey, site visit, and/or the installation of temporary monitoring equipment at any time up to two years after installation for quality control. Customers will allow SRP and their subcontractors reasonable access to and egress from the

Terms and Conditions, continued

- installation site during normal business hours for inspection purposes. If selected for inspection, the rebate will be withheld pending outcome of the inspection. If the equipment is found to be in compliance with the program requirements, the rebate will be paid. If the equipment is not in compliance, the customer will be notified.
9. SRP reserves the right to inspect the installed equipment for compliance with the program requirements. Inspection may include a telephone survey, site visit, and/or the installation of temporary monitoring equipment at any time up to two years after installation for quality control. Customers will allow SRP and their subcontractors reasonable access to and egress from the installation site during normal business hours for inspection purposes. If selected for inspection, the rebate will be withheld pending outcome of the inspection. If the equipment is found to be in compliance with the program requirements, the rebate will be paid. If the equipment is not in compliance, the customer will be notified.
 10. Program procedures, requirements, and incentive levels are subject to change or cancellation without notice.
 11. SRP makes no representations and provides no warranty or guaranty with respect to the design, manufacture, construction, safety, performance or effectiveness of the newly installed equipment, including any warranties of merchantability or fitness for a particular purpose. Responsibility for delivery and workmanship related to any equipment or services the customer procures exclusively rests with the contractor or retailer selected by the customer. SRP assumes no responsibility for oversight of contractor services.
 12. In exchange for any approved equipment and/or service rebates for energy efficiency measures, the customer hereby sells, transfers and conveys to SRP all Environmental Attributes and Environmental Attributes Reporting Rights, as such terms are defined below, associated with the energy savings attributable to the qualifying measure(s) or its operation. "Environmental Attributes" means those aspects, claims, characteristics and benefits of avoided energy use associated with the measure(s), as well as any and all fuel, emissions, air quality or other environmental characteristics, including, but not limited to, white and green energy tags, renewable energy credits, energy efficiency credits, carbon credits, or certificates attributable to the energy savings or avoided use associated with the qualifying measure(s). "Environmental Attributes Reporting Rights" means all rights to report ownership of the Environmental Attributes to any person or entity under Section 1605(b) of the Energy Policy Act of 1992, any successor or replacement statutes, or otherwise.
 13. The terms and conditions set forth herein constitute a complete statement of the Terms and Conditions applicable to this promotion, and supersede all prior representations or understandings, whether written or oral. SRP shall not be bound by or be liable for any statement, representation, promise, inducement or understanding of any kind that is not set forth herein. SRP reserves the right to change or cancel this promotion or its terms and conditions at any time.

DO NOT

SAMPLE COMPLETE

Customer Signature

Under penalties of perjury, I hereby certify by my signature below that:

- I have read and understand all Terms and Conditions of this form and the customer eligibility, measure eligibility, and participation procedures for SRP’s PowerWise Standard Business Solutions in the Program Manual and applicable Equipment Catalog(s).
- As the building owner or the owner's authorized representative that all the information contained within this application is true and factual.
- I am 1) providing a correct taxpayer identification number on this form, 2) not subject to backup withholding, and 3) am a US person (including US Resident Alien).
- If I have completed a fraudulent application or mistakenly receive an amount greater than I was authorized to receive, I will refund the money back to SRP.
- The undersigned applicant shall defend, protect, indemnify and hold harmless SRP, Nexant Inc., and their respective board members, officers, directors, managers, associates, related firms and entities, employees, servants, and agents of (the “Indemnified Parties”) against all claims, losses, expenses, damages, demands, judgments, causes of action, suits, and liability of every kind and character whatsoever ("claims") arising out of or incident to, or related in any way to, directly or indirectly, participation in the PowerWise Standard Business Solutions program; provided however, that applicant shall not be required to indemnify and hold harmless any Indemnified Party member against claims adjudicated to have been caused by their gross negligence or willful misconduct.
- By typing my name in the signature space below, I understand this is my electronic signature, and I agree this will represent the same as my handwritten signature.

Business Name _____

Signature _____

Date _____

Name (please print) _____

Title _____

SAMPLE
DO NOT COMPLETE

Rebate Worksheet

Important: This form is to be completed and submitted to SRP with the Rebate Application. Please refer to the Equipment Catalog(s) for equipment eligibility requirements, rebate amounts and equipment codes. Dealers or contractors may assist in the completion of this form. Attach additional sheets as necessary.

Parameter	Measure 1	Measure 2	Measure 3
Equipment code			
Project type (Retrofit or New Construction)			
Installation date			
Equipment location (e.g. roof, mechanical room)			
Equipment end use (e.g. supply fan, CHW pump)			
Age of replaced equipment (for retrofits)			
Dealer name			
Manufacturer			
Model number			
Annual operating hours			
Compressed air system properties (HP, SCFM, Storage, Control, PSI)			
Efficiency(ies) (as described in Equipment Catalog)			
Measure size (as described in Equipment Catalog)			
Measure rebate (\$) (e.g. HVAC: \$50/ton*10 tons=\$500)			
Number of measures			
Total rebate (\$) (# of Measures*Measure Rebate)			

DO NOT COMPLETE

Application Checklist

Before submitting this application please verify the following:

- Did you read and understand the eligibility requirements in the Program Manual?
- Have you included a dated sales invoice?
- Did you attach any additional documentation listed in the Equipment Catalog?
- Did you include your account number?
- Did you sign the Terms and Conditions Form?

SEND COMPLETED REBATE APPLICATIONS TO:

SRP PowerWise Standard Business Solutions
 4802 E Ray Rd Ste 23, PMB 192
 Phoenix, AZ 85044-6417
 Fax: (480) 345-7601
 Email: savewithsrpbiz@srpnet.com



COMPRESSED AIR MEASURES

This Equipment Catalog describes the eligibility requirements and rebate amounts for qualifying equipment under SRP's FY12 PowerWise Standard Business Solutions program. It also includes instructions on how to complete the Rebate Application and information regarding any required additional documentation. SRP's PowerWise Standard Business Solutions provides rebates for many types of energy efficient technologies. Please read the following sections carefully to ensure that you purchase and install qualifying equipment.

In order to be eligible for rebates through the PowerWise Standard Business Solutions program all equipment must meet the following requirements:

- Equipment must be purchased on or after May 1, 2011. Applications for post purchase measures must be received no later than July 31, 2012 to be eligible for rebates (subject to rebate availability).
- Equipment must be new and installed in a manner that meets or exceeds code regulations.
- Replaced equipment must be disposed of in accordance with local, state, or federal codes and regulations and cannot be re-installed elsewhere.

Pre-qualification of eligible measures under the PowerWise Standard Business Solutions program is not required **except** for Retrofit Lighting Equipment and occupancy sensors. In the PowerWise Standard Business Solutions program, "SCFM" is defined as "Cubic Feet of air per Minute at standard conditions (14.696 psia, 68°F, and 0% relative humidity)". Additional eligibility and submittal requirements for Compressed Air products are outlined in this Equipment Catalog.

Rebates for additional measures may be available. For more information about PowerWise Standard Business Solutions, eligibility requirements, rebate levels, other SRP energy efficiency programs, or general inquiries, contact a participating SRP Alliance Contractor. You can also visit the program's Web site at www.savewithsrpbiz.com, email us at savewithsrpbiz@srpnet.com, or contact the PowerWise Business Solutions hotline at 602-236-3054.

LOW PRESSURE DROP FILTERS

Measure Description: Coalescing filters are designed to remove solids and aerosols from compressed air. Aerosols coalesce into liquids that fall to the bottom of the filter body and are removed through a drain to a condensate system. Loose-packed, deep-bed coalescing filters have lower pressure drop, longer element life and perform the same task as standard coalescing filters.

Applicability: New construction and retrofit installations are eligible.

Equipment Eligibility: Low pressure drop filters must:

1. Be installed on an operating compressor 25 HP or larger
2. Have a pressure loss at rated flow ≤ 1 psi when new and ≤ 3 psi at element change
3. Have particulate filtration that is 100% at ≥ 3.0 microns and at least 99.98% at 0.1 to 3.0 microns
4. Be rated for ≤ 5 ppm liquid carryover
5. Be a deep-bed "mist eliminator" style with element life ≥ 5 years
6. Have a rated capacity ≤ 500 scfm

Items to submit with Rebate Application:

1. Dated sales receipt/invoice
2. Manufacturer's equipment specification sheet demonstrating compliance with equipment eligibility requirements

Instructions for Rebate Application: In the Rebate application note the "Efficiency" as NA, "Measure Size" as the filter's rated capacity in SCFM, "Operating Hours" as the annual hours of operation of the compressed air system, and "System Properties" as the 1) Total HP, 2) SCFM, 3) Storage capacity in gallons, 4) Compressor load/unload controls, and 5) Operating pressure of the compressed air system.

Measure Rebate: Rebate amount for qualifying measures are listed below in Table CA-1.

Table CA-1. Low-Pressure Drop Filter Rebate

Equipment Code	Measure Description	Rebate
CALPDF	Low-Pressure Drop Filter	\$0.80/SCFM

ZERO LOSS CONDENSATE DRAINS

Measure Description: Liquid water must be removed from compressed air systems. Zero loss condensate drains remove the water without venting compressed air. They can be electronically or pneumatically actuated.

Applicability: New construction and retrofit installations are eligible.

Equipment Eligibility: Drain must be designed to function without the release of compressed air into the atmosphere.

- Items to submit with Rebate Application:**
1. Dated sales receipt/invoice
 2. Manufacturer’s equipment specification sheet demonstrating compliance with equipment eligibility requirements

Instructions for Rebate Application: In the Rebate application note the “Efficiency” as NA, “Operating Hours” as the annual hours of operation of the compressed air system, and “System Properties” as the 1) Total HP, 2) SCFM, 3) Storage capacity in gallons, 4) Compressor load/unload controls, and 5) Operating pressure of the compressed air system.

Measure Rebate: Rebate amount for qualifying measures are listed below in Table CA-2.

Table CA-2. Zero Loss Condensate Drain Rebate

Equipment Code	Measure Description	Rebate
CAZERO	Zero loss condensate drain	\$90.00/unit

SAMPLE

DO NOT

ADDITIONAL RECEIVER CAPACITY

Measure Description: Adding receiver volume to a compressed air system may allow the system to operate at lower pressure, slow compressor cycling, and allow for better sequencing of compressors.

Applicability: New construction and retrofit installations are eligible.

Equipment Eligibility: Adding receiver capacity is eligible for rebates when the total tank receiver capacity after the addition must be > 2 gallons per scfm of compressor capacity.

- Items to submit with Rebate Application:**
1. Dated sales receipt/invoice
 2. Manufacturer’s equipment specification sheet listing receiver capacity

Instructions for Rebate Application: In the Rebate application note the “Efficiency” as NA, “Measure Size” as the new receiver’s capacity in gallons, “Operating Hours” as the annual hours of operation of the compressed air system, and “System Properties” as the 1) Total HP, 2) SCFM, 3) Storage capacity (in gallons including the new receiver), 4) Compressor load/unload controls, and 5) Operating pressure of the compressed air system.

Measure Rebate: Rebate amount for qualifying measures are listed below in Table CA-3.

Table CA-3. Additional Receiver Capacity Rebate

Equipment Code	Measure Description	Rebate
CARCVR	Additional Receiver Capacity	\$1.50/gallon

REFRIGERATED CYCLING DRYERS

Measure Description: At reduced capacity, cycling refrigerated dryers use less energy than non-cycling dryers. Non-cycling refrigerated dryers use a nearly constant amount of energy, regardless of compressed air flow. Cycling refrigerated dryers use energy nearly in proportion to the compressed air flow.

Applicability: New construction and retrofit installations are eligible.

Equipment Eligibility: Refrigerated cycling dryers must:

1. Have a rated dryer capacity ≤ 500 scfm
2. Operate exclusively in cycling mode and not be equipped with the ability to select between cycling and non-cycling mode
3. Cycle off during periods of reduced demand (i.e. compressor doesn't simply go into a bypass or unload mode)
4. Have integral zero loss condensate drain, or zero loss condensate drain must be installed and accompany sale of dryer

- Items to submit with Rebate Application:**
1. Dated sales receipt/invoice
 2. Manufacturer’s equipment specification sheet demonstrating compliance with equipment eligibility requirements

Instructions for Rebate Application: In the Rebate application note the “Efficiency” as NA, “Measure Size” as the dryer’s rated capacity in SCFM, “Operating Hours” as the annual hours of operation of the compressed air system, and “System Properties” as the 1) Total HP, 2) SCFM, 3) Storage capacity in gallons, 4) Compressor load/unload controls, and 5) Operating pressure of the compressed air system.

Measure Rebate: Rebate amount for qualifying measures are listed below in Table CA-4.

Table CA-4. Refrigerated Cycling Dryer Rebate

Equipment Code	Measure Description	Rebate
CAREFD	Refrigerated cycling dryer	\$1.50/SCFM

VFD COMPRESSORS

Measure Description: Variable speed oil injected screw compressors are more efficient than fixed speed oil injected screw compressors at medium and low capacity. Many variable speed compressors are able to cycle on and off during periods of low load, providing improved efficiency at very low capacity.

Applicability: New construction and retrofit installations are eligible.

Equipment Eligibility: VFD compressors must:

1. Be oil-injected screw unit less than or equal to 75 HP
2. Adjust speed as primary means of capacity control
3. Not use inlet modulation when demand is below minimum speed air production

Items to submit with Rebate Application: 1. Dated sales receipt/invoice
 2. Manufacturer’s equipment specification sheet demonstrating compliance with equipment eligibility requirements

Instructions for Rebate Application: In the Rebate application note the “Efficiency” as NA, “Measure Size” as the compressor’s rated size in HP, “Operating Hours” as the annual hours of operation of the compressed air system and “System Properties” as the 1) Total HP, 2) SCFM, 3) Storage capacity in gallons, and 4) Operating pressure of the compressed air system.

Measure Rebate: Rebate amount for qualifying measures are listed below in Table CA-5.

Table CA-5. VFD Compressor Rebate

Equipment Code	Measure Description	Rebate
CAVFD	VFD compressor	\$90.00/HP

DO NOT COMPLETE



HVAC MEASURES

This Equipment Catalog describes the eligibility requirements and rebate amounts for qualifying equipment under SRP's FY12 PowerWise Standard Business Solutions program. It also includes instructions on how to complete the Rebate Application and information regarding any required additional documentation. SRP's PowerWise Standard Business Solutions provides rebates for many types of energy efficient technologies. Please read the following sections carefully to ensure that you purchase and install qualifying equipment.

In order to be eligible for rebates through the PowerWise Standard Business Solutions program all equipment must meet the following requirements:

- Equipment must be purchased on or after May 1, 2011. Applications for post purchase measures must be received no later than July 31, 2012 to be eligible for rebates (subject to rebate availability).
- Equipment must be new and installed in a manner that meets or exceeds code regulations.
- Replaced equipment must be disposed of in accordance with local, state, or federal codes and regulations and cannot be re-installed elsewhere.

Pre-qualification of eligible measures under the PowerWise Standard Business Solutions program is not required **except** for Retrofit Lighting Equipment and occupancy sensors. Additional eligibility and submittal requirements for HVAC technologies are outlined in this Equipment Catalog.

Rebates for additional measures may be available. For more information about PowerWise Standard Business Solutions, eligibility requirements, rebate levels, other SRP energy efficiency programs, or general inquiries, contact a participating SRP Alliance Contractor. You can also visit the program's Web site at www.savewithsrpbiz.com, email us at savewithsrpbiz@srpnet.com, or contact the PowerWise Business Solutions hotline at 602-236-3054.

UNITARY AIR CONDITIONERS AND HEAT PUMPS (AIR-COOLED)

Measure Description: The PowerWise Standard Business Solutions program offers rebates for air-cooled unitary HVAC equipment based on the AHRI certified efficiency levels at Standard Rating Conditions. The eligibility requirements and rebate levels are described below.

Applicability: New construction and retrofit installations are eligible.

Equipment Eligibility: Unitary air conditioners and heat pumps will be eligible for rebates if they are air-cooled units that meet or exceed all of the efficiency ratings shown in Table H-1 for air conditioning units and Table H-2 for heat pump units at AHRI Standard Rating Conditions. Heat Pumps must meet both the cooling mode and heating mode efficiency requirements to qualify for per ton cooling efficiency rebates. Equipment must have an efficiency rating by AHRI and use a minimum ozone-depleting refrigerant. Window and room air conditioners are *not* eligible for rebates.

Rebates: The rebate for air-cooled unitary air conditioners and heat pumps will be paid on a tiered efficiency structure according to the AHRI-rated cooling capacity of the installed equipment. Rebates will be paid for the highest efficiency tier for which the unit qualifies. The rebate levels are as follows:

- Tier 1: \$75 per ton of cooling capacity.
- Tier 2: \$100 per ton of cooling capacity.

Items to submit with Rebate Application:

1. Dated sales receipt/invoice
2. Manufacturers specification sheets documenting efficiency or unit AHRI reference number(s)

Instructions for Rebate Worksheet: On the Rebate Application note the “Efficiency” as the AHRI SEER/IPLV/IEER, EER and HSPF/COP values, and the “Measure Size” as the AHRI-rated cooling capacity at Standard Test Conditions in tons (1 ton = 12,000 Btu/h).

Table H-1. Eligibility Requirements for Air-Cooled Unitary Air Conditioners

AC Size	System Type	Equipment Code	Tier 1 \$75/ton	Tier 2 \$100/ton
<65,000 Btu/h (single phase)	Split System	AC1SS65	14.5 SEER 12.0 EER	15.0 SEER 12.5 EER
	Single Package	AC1SP65	14.0 SEER 11.0 EER	14.0 SEER 12.0 EER
<65,000 Btu/h (three phase)	Split System	AC3SS65	14.0 SEER 12.0 EER	15.0 SEER 12.5 EER
	Single Package	AC3SP65	14.0 SEER 11.6 EER	15.0 SEER 12.0 EER
≥65,000 Btu/h and <135,000 Btu/h	Split System and Single Package	AC135	11.5 EER 11.6 IEER	12.0 EER 12.1 IEER
≥135,000 Btu/h and <240,000 Btu/h	Split System and Single Package	AC240	11.5 EER 11.6 IEER	12.0 EER 12.1 IEER
≥240,000 Btu/h and <760,000 Btu/h	Split System and Single Package	AC760	10.5 EER 10.6 IEER	10.8 EER 11.7 IEER
≥760,000 Btu/h	Split System and Single Package	ACL	9.7 EER 10.7 IEER	10.2 EER 10.7 IEER

SAMPLE

Do Not Complete

Table H-2. Eligibility Requirements for Air-Cooled Unitary Heat Pumps

AC Size	System Type	Equipment Code	Tier 1 \$75/ton	Tier 2 \$100/ton
<65,000 Btu/h (single phase)	Split System	HP1SS65	14.5 SEER 12.0 EER 8.2 HSPF	14.5 SEER 12.0 EER 8.5 HSPF
	Single Package	HP1SP65	14.0 SEER 11.0 EER 8.0 HSPF	14.0 SEER 12.0 EER 8.0 HSPF
<65,000 Btu/h (three phase)	Split System	HP3SS65	14.0 SEER 12.0 EER 8.5 HSPF	15.0 SEER 12.5 EER 9.0 HSPF
	Single Package	HP3SP65	14.0 SEER 11.6 EER 8.0 HSPF	15.0 SEER 12.0 EER 8.5 HSPF
≥65,000 Btu/h and <135,000 Btu/h	Split System and Single Package	HP135	11.5 EER 11.6 IEER 3.4 COP ¹ 2.4 COP ²	12.0 EER 12.1 IEER 3.4 COP ¹ 2.4 COP ²
≥135,000 Btu/h and <240,000 Btu/h	Split System and Single Package	HP240	11.5 EER 11.6 IEER 3.2 COP ¹ 2.1 COP ²	12.0 EER 12.1 IEER 3.2 COP ¹ 2.1 COP ²
≥240,000 Btu/h and <760,000 Btu/h	Split System and Single Package	HP760	10.5 EER 10.6 IEER 3.2 COP ¹ 2.1 COP ²	10.8 EER 11.7 IEER 3.2 COP ¹ 2.1 COP ²

¹ At 47°F db/43°F wb outside air

² At 17°F db/15°F wb outside air

Do Not Complete

UNITARY AIR CONDITIONERS AND HEAT PUMPS (WATER-COOLED)

Measure Description: The PowerWise Standard Business Solutions program offers rebates for water-cooled unitary HVAC equipment based on the AHRI certified efficiency levels at Standard Rating Conditions. The eligibility requirements and rebate levels are described below.

Applicability: New construction and retrofit installations are eligible.

Equipment Eligibility: Unitary air conditioners and heat pumps will be eligible for rebates if they are water-cooled units that meet or exceed all of the efficiency ratings shown in Table H-3 at AHRI Standard Rating Conditions. Heat Pumps must meet both the cooling mode and heating mode efficiency requirements to qualify for per ton cooling efficiency rebates. Equipment must have an efficiency rating by AHRI and use a minimum ozone-depleting refrigerant. Window and room air conditioners are *not* eligible for rebates.

Rebates: The rebate for water-cooled unitary air conditioners and heat pumps is \$75.00 per ton of AHRI-rated cooling capacity of the installed equipment.

- Items to submit with Rebate Application:**
1. Dated sales receipt/invoice
 2. Manufacturers specification sheets documenting efficiency or unit ARI reference number(s)

Instructions for Rebate Worksheet: On the Rebate Application note the “Efficiency” as the AHRI EER and COP values, and the “Measure Size” as the AHRI-rated cooling capacity at Standard Test Conditions in tons (1 ton = 12,000 Btu/h).

Table H-3. Eligibility Requirements for Water-Cooled Unitary Equipment

Equipment Type	System Type	Equipment Code	Minimum Efficiency Levels
Water and evaporative cooled Unitary AC units	Split System and Single Package	ACWC	14.0 EER
Water-source heat pumps	Split System and Single Package	HPWS	14.0 EER ¹ 4.6 COP ²

¹ At 85°F entering water

² At 70°F entering water

WATER CHILLING EQUIPMENT

Measure Description: Water chilling equipment (e.g. chillers) is commonly used to provide cooling for a variety of building types and process loads. Chillers come in many different types (centrifugal, rotary, screw, scroll, and reciprocating) and typically reject heat either through air-cooled or water-cooled condensers. High efficiency chillers can yield significant energy cost savings compared to standard efficiency units.

Applicability: New construction and retrofit installations are eligible.

Equipment Eligibility: Water chilling equipment must:

1. Exceed the minimum efficiency requirements per Table H-4 below as rated in accordance with AHRI Standard 550/590
2. Not be a backup service unit
3. Reflect Variable Frequency Drives (VFD) installed on the chiller compressor in the IPLV rating, if applicable
4. Not serve cooling loads more than 20% process related
5. Be purchased and installed, and meet all other program terms and conditions

- Items to submit with Rebate Application:**
1. Dated sales receipt/invoice
 2. Manufacturer’s equipment specification sheet showing the unit’s COP and IPLV ratings at AHRI rated conditions

Instructions for Rebate Application: In the Rebate Application mark the “System Parameters” as the chiller type and heat rejection method (e.g. water-cooled centrifugal), “Efficiency” as the AHRI-rated COP and IPLV (including impacts of compressor VFD if applicable) and the “Measure Size” as the AHRI-rated cooling capacity at Standard Test Conditions in tons (1 ton = 12,000 Btu/hr).

Measure Rebate: Equipment that meets or exceeds the minimum IPLV efficiency requirements shown in Table H-4 will be paid an equipment rebate of \$10/ton, plus an efficiency rebate of \$350/ton per kW/ton unit increase in IPLV efficiency using the following equation:

$$\text{Water Chilling Rebate} = (\text{Tons} * \$10/\text{ton}) + (\text{Tons} * \$350 * (\text{Minimum IPLV} - \text{Chiller IPLV}))$$

For example, the rebate for 200 ton air-cooled chiller with an IPLV rating of 1.00 kW/ton is:

$$(200 \text{ tons} * \$10/\text{ton}) + (200 \text{ tons} * \$350/(\text{kW}/\text{ton}) * (1.12 \text{ kW}/\text{ton} - 1.00 \text{ kW}/\text{ton})) = \$10,400$$

Table H-4. Water Chiller Unit Efficiency Requirements

Compressor Type	Heat Rejection	Size Category (tons)	Equip. Code	Minimum IPLV Efficiency (kW/ton)
All	Air Cooled	All	HALLAA	1.12
Reciprocating	Water Cooled	<150	HRECWS	0.68
Reciprocating	Water Cooled	≥150 & <300	HRECWM	0.68
Reciprocating	Water Cooled	≥300	HRECWL	0.68
Rotary, Screw, Scroll	Water Cooled	<150	HRSSWS	0.66
Rotary, Screw, Scroll	Water Cooled	≥150 & <300	HRSSWM	0.61
Rotary, Screw, Scroll	Water Cooled	≥300	HRSSWL	0.55
Centrifugal	Water Cooled	<150	HCENWS	0.65
Centrifugal	Water Cooled	≥150 & <300	HCENWM	0.58
Centrifugal	Water Cooled	≥300	HCENWL	0.53

PACKAGED TERMINAL UNITS

Measure Description: Package Terminal Air-Conditioners and Heat Pumps (PTAC and PTHP) are often used to provide cooling and heating in the hospitality industry. A PTAC is defined in AHRI Standard 310/380-2004 as “... a wall sleeve and a separate un-encased combination of heating and cooling assemblies specified by the manufacturer and intended for mounting through the wall. It includes refrigeration components, separable outdoor louvers, forced ventilation, and heating availability by purchaser’s choice of, at least, hot water, steam, or electrical resistance heat.” PTHPs are defined similarly as “... a separate un-encased refrigeration system installed in a cabinet having a function and configuration similar to that of a packaged terminal air-conditioner. It uses reverse cycle refrigeration as its prime heat source and should have other supplementary heat source(s) available to purchasers with the choice of, at least, hot water, steam, or electrical resistance heat.”

Applicability: New construction and retrofit installations are eligible.

Equipment Eligibility: PTAC and PTHP units must have an AHRI-certified efficiency(ies) that meets or exceeds the minimum requirements shown in Table H-5. Equipment must be purchased and installed, and meet all other program terms and conditions.

- Items to submit with Rebate Application:**
1. Dated sales receipt/invoice
 2. Manufacturers specification sheets documenting unit AHRI reference number(s) and efficiency(ies)

Instructions for Rebate Application: In the Rebate application mark the “Efficiency” as the AHRI-rated EER (and COP for PTHP units) and the “Measure Size” as the ARI-rated cooling capacity at Standard Test Conditions in Btu/hr (1 ton = 12,000 Btu/hr).

Measure Rebate: Rebate amounts for qualifying measures are listed below in Table H-5.

Table H-5. PTAC and PTHP Efficiency Requirements and Rebates

Equipment Type	Size Category	Equip. Code	Minimum Efficiency Requirement	ARI Standard	Rebate (\$/ton)
Package Terminal Air Conditioners (PTAC)	≤ 8,000 Btu/hr	PTAC80	11.8 EER	310/380	\$50
	> 8,000 and ≤ 10,500 Btu/hr	PTAC105	11.4 EER		\$50
	> 10,500 and ≤ 13,500 Btu/hr	PTAC135	10.7 EER		\$50
	> 13,500 Btu/hr	PTACL	10.0 EER		\$50
Package Terminal Heat Pumps (PTHP)	≤ 8,000 Btu/hr	PTHP80	11.8 EER & 3.3 COP Heating	310/380	\$50
	> 8,000 and ≤ 10,500 Btu/hr	PTHP105	11.4 EER & 3.2 COP Heating		\$50
	> 10,500 and ≤ 13,500 Btu/hr	PTHP135	10.7 EER & 3.1 COP Heating		\$50
	> 13,500 Btu/hr	PTHPL	10.0 EER & 3.0 COP Heating		\$50

VARIABLE FREQUENCY DRIVES

Measure Description: Variable Frequency Drives (VFDs) are electronic controls that regulate motor speed and torque, resulting in reduced energy consumption under part load conditions.

Applicability:

For retrofit projects: For HVAC installations where a variable load is present, any throttling or bypass devices (such as inlet vanes), bypass dampers, three-way valves or throttling valves must be removed or permanently disabled to qualify for HVAC fan and pump VFD rebates. Savings will only be realized where a variable load is present. Rebates are not available for retrofits of existing VFDs.

For new construction projects: Rebates are not available where VFDs are required by ASHRAE 90-1 2004, which requires a VFD on HVAC fans ≥ 15 horsepower (where a variable flow system is required).

Equipment Eligibility: The rebates listed for this measure apply to fan and pump applications on HVAC distribution systems. The maximum fan or pump size is 100 hp. Equipment must be purchased and installed, and meet all other program terms and conditions.

Chillers retrofitted with a VFD, VFDs larger than 100 hp, or VFDs installed on non-HVAC equipment may be eligible for rebates under the PowerWise Custom Business Solutions program. For more information about this program, contact the Program Administrator **before** you purchase your equipment.

- Items to submit with Rebate Application:**
1. Dated sales receipt/invoice
 2. Manufacturers specification sheets documenting efficiency or unit ARI reference number(s)

Instructions for Rebate Application: In the Rebate application mark the “Efficiency” as “NA” and the “Measure Size” as the nameplate motor size of the affected motor.

Measure Rebate: Rebate amount for qualifying measures are listed below in Table H-6.

Table H-6. Variable Frequency Drives (VFDs) Rebates

Equipment Code	Measure Description	Unit	Rebate
VDFD	HVAC Fan ≤ 100 HP	HP	\$55/HP
VDFP	HVAC Pump ≤ 100 HP	HP	\$55/HP



LIGHTING MEASURES

This Equipment Catalog describes the eligibility requirements and rebate amounts for qualifying equipment under SRP's FY12 PowerWise Standard Business Solutions program. It also includes instructions on how to complete the Rebate Application and information regarding any required additional documentation. SRP's PowerWise Standard Business Solutions provides rebates for many types of energy efficient technologies. Please read the following sections carefully to ensure that you purchase and install qualifying equipment.

In order to be eligible for rebates through the PowerWise Standard Business Solutions program all equipment must meet the following requirements:

- Equipment must be purchased on or after May 1, 2011. Applications for post purchase measures must be received no later than July 31, 2012 to be eligible for rebates (subject to rebate availability).
- Equipment must be new and installed in a manner that meets or exceeds code regulations.
- Replaced equipment must be disposed of in accordance with local, state, or federal codes and regulations and cannot be re-installed elsewhere.

Pre-qualification of eligible measures under the PowerWise Standard Business Solutions program is **required** for Retrofit Lighting Equipment and occupancy sensors. Additional eligibility and submittal requirements for lighting measures are outlined in this Equipment Catalog.

Rebates for additional measures may be available. For more information about PowerWise Standard Business Solutions, eligibility requirements, rebate levels, other SRP energy efficiency programs, or general inquiries, contact a participating SRP Alliance Contractor. You can also visit the program's Web site at www.savewithsrpbiz.com, email us at savewithsrpbiz@srpnet.com, or contact the PowerWise Business Solutions hotline at 602-236-3054.

LIGHTING

Measure Description: The PowerWise Standard Business Solutions program offers rebates for qualifying lighting equipment. The eligibility requirements and rebate levels for lighting equipment are described below.

Applicability: Rebates are available for lighting equipment installed as part of a new construction or retrofit project. *Lighting retrofit projects must submit a Retrofit Lighting Workbooks prior to equipment purchase and installation.*

Equipment Eligibility: Lighting equipment that results in a verifiable installed demand reduction is eligible for a rebate. The following restrictions apply:

Lighting Retrofits:

- T8 or T5 fluorescent lamps replacing existing fixtures must be rated at 80 CRI or higher and 90 lumens or higher per watt with ballasts having a power factor of at least 0.9 and a total harmonic distortion of less than 20%.
- HID fixtures are eligible if they are ceramic metal halides.
- LED fixtures (except exit signs) must be UL-rated and approved by either ENERGY STAR, the Design Lights Consortium, or have SRP's written approval prior to purchase and installation.
- Retrofits involving de-lamping are eligible provided that the capability to re-install additional lamps into a fixture is removed and accompanied by an upgrade to new qualifying lighting equipment.
- Equipment must be new and installed in a manner that meets or exceeds code regulations.
- Replaced equipment must be disposed of in accordance with local, state, or federal codes and regulations and cannot be re-installed elsewhere.

Lighting New Construction:

- T8 or T5 fluorescent lamps replacing existing fixtures must be rated at 80 CRI or higher and 90 lumens or higher per watt with ballasts having a power factor of at least 0.9 and a total harmonic distortion of less than 20%.
- HID fixtures are eligible if they are ceramic metal halides.
- LED fixtures (except exit signs) must be ENERGY STAR rated or have SRP’s written approval prior to purchase and installation.
- Equipment must be new and installed in a manner that meets or exceeds code regulations.
- The lighting project must produce a 10% installed demand reduction from ASHRAE 90.1-2004 lighting power density specifications by building type as described in Table L-1. A New Construction Lighting Workbook must be submitted for each affected building.

Ineligible Measures:

- Screw-in compact fluorescent lamps are not eligible for rebates.
- Standard metal halide or any high pressure sodium lighting fixtures are not eligible in retrofit projects.

Items to submit with Rebate Application: 1. Dated sales receipt/invoice including material and labor
 2. Evidence of facility square footage (new construction only)

Instructions for Rebate Application: The application for lighting technologies is *not* the same as the application for motors, drives, refrigeration, compressed air, and MVAC equipment. Lighting projects require the submittal of a Lighting Workbook which can be downloaded from the SRP website (www.savewithsrpbiz.com) or obtained by contacting the Program Administrator or a participating Alliance Contractor. Follow the instructions accompanying the spreadsheet to determine the demand reduction and rebate amount expected from your lighting project.

Measure Rebate: Rebates for lighting equipment are paid at \$300.00 per kilowatt (kW) of reduced demand. The baseline lighting power densities for new construction lighting projects are shown in Table L-1.

Table L-1. Baseline Lighting Power Densities for New Construction Measures

Building Area Type	W/ft ²	Building Area Type	W/ft ²
Automotive Facility	0.9	Multi-Family	0.7
Convention Center	1.2	Museum	1.1
Court House	1.2	Office	1.0
Dining: Bar Lounge/Leisure	1.3	Parking Garage	0.3
Dining: Cafeteria/Fast Food	1.4	Penitentiary	1.0
Dining: Family	1.6	Performing Arts Theater	1.6
Dormitory	1.0	Police/Fire Station	1.0
Exercise Center	1.0	Post Office	1.1
Gymnasium	1.1	Religious Building	1.3
Healthcare-Clinic	1.0	Retail	1.5
Hospital	1.2	School/University	1.2
Hotel	1.0	Sports Arena	1.1
Library	1.3	Town Hall	1.1
Manufacturing Facility	1.3	Transportation	1.0
Motel	1.0	Warehouse	0.8
Motion Picture Theater	1.2	Workshop	1.4

OCCUPANCY SENSORS

Measure Description: Lighting occupancy sensors can reduce electrical energy consumption by turning off lighting equipment when occupants are not present.

Applicability: New construction and retrofit installations, where not required by ASHRAE 90.1-2004, are eligible.

Equipment Eligibility: Must be permanently installed. Occupancy sensors may be wall, fixture, or ceiling-mounted. Occupancy sensors must be passive infrared, ultrasonic, or dual technology sensors.

Items to submit with Rebate Application:

1. Dated sales receipt/invoice
2. Manufacturer's equipment specification sheet demonstrating compliance with equipment eligibility requirements

Instructions for Rebate Application: The application for lighting technologies is *not* the same as the application for motors, drives, refrigeration, compressed air, and HVAC equipment. Lighting projects require the submittal of a Lighting Workbook which can be downloaded from the SRP website (www.savewithsrpbiz.com) or obtained by contacting the Program Administrator or a participating Alliance Contractor. Follow the instructions accompanying the spreadsheet to enter the number of eligible occupancy sensors installed and identify the affected lighting circuit(s) and equipment.

Measure Rebate: Rebate amount for qualifying occupancy sensors is \$40.00 per unit or unit system.

SAMPLE
Do Not Complete



MOTOR AND VARIABLE FREQUENCY DRIVE PRODUCTS

This Equipment Catalog describes the eligibility requirements and rebate amounts for qualifying equipment under SRP’s FY12 PowerWise Standard Business Solutions program. It also includes instructions on how to complete the Rebate Application and information regarding any required additional documentation. SRP’s PowerWise Standard Business Solutions provides rebates for many types of energy efficient technologies. Please read the following sections carefully to ensure that you purchase and install qualifying equipment.

In order to be eligible for rebates through the PowerWise Standard Business Solutions program all equipment must meet the following requirements:

- Equipment must be purchased on or after May 1, 2011. Applications for post purchase measures must be received no later than July 31, 2012 to be eligible for rebates (subject to rebate availability).
- Equipment must be new and installed in a manner that meets or exceeds code regulations.
- Replaced equipment must be disposed of in accordance with local, state, or federal codes and regulations and cannot be re-installed elsewhere.

Pre-qualification of eligible measures under the PowerWise Standard Business Solutions program is not required **except** for Retrofit Lighting Equipment and occupancy sensors. Additional eligibility and submittal requirements for Motor and VFD technologies are outlined in this Equipment Catalog.

Rebates for additional measures may be available. For more information about PowerWise Standard Business Solutions, eligibility requirements, rebate levels, other SRP energy efficiency programs, or general inquiries, contact a participating SRP Alliance Contractor. You can also visit the program’s Web site at www.savewithsrpbiz.com, email us at savewithsrpbiz@srpnet.com, or contact the PowerWise Business Solutions hotline at 602-236-3054.

ELECTRONICALLY COMMUTATED MOTORS

Measure Description: An electronically commutated motor (ECM) is a fractional horsepower direct current (DC) motor used most often in commercial refrigeration applications such as display cases, walk-in coolers/freezers, refrigerated vending machines, and bottle coolers. ECMs can also be used in HVAC applications, primarily as small fan motors for packaged terminal units or in terminal air boxes.

Applicability: New construction (except for walk-in main refrigerator or freezers) and retrofit installations are eligible.

Equipment Eligibility: All ECMs up to 1 HP in size may qualify for an incentive. Equipment must be purchased and installed, and meet all other program terms and conditions. ECMs exceeding 1 HP and other motors that exceed NEMA Premium efficiency requirements may be eligible for rebates under the custom program, which requires pre-approval.

- Items to submit with Rebate Application:**
1. Dated sales receipt/invoice
 2. Manufacturer’s equipment specification sheet

Instructions for Rebate Application: In the Rebate application mark the “Efficiency” as “NA” and the “Measure Size” as the nameplate motor size.

Measure Rebate: Rebate amount for qualifying measures are listed below in Table M-2.

Table M-2. Electronically Commutated Motors (ECM)

Equipment Code	Measure Description	Unit	Rebate
ECMREF	Refrigeration Application	Nameplate Wattage	\$0.50/watt
ECMHVC	HVAC Application	Nameplate HP	\$50/HP

VARIABLE FREQUENCY DRIVES

Measure Description: Variable Frequency Drives (VFDs) are electronic controls that regulate motor speed and torque, resulting in reduced energy consumption under part load conditions.

Applicability:

For retrofit projects: For HVAC installations where a variable load is present, any throttling or bypass devices (such as inlet vanes), bypass dampers, three-way valves or throttling valves must be removed or permanently disabled to qualify for HVAC fan and pump VFD rebates. Savings will only be realized where a variable load is present. Rebates are not available for retrofits of existing VFDs.

For new construction projects: Rebates are not available where VFDs are required by ASHRAE 90-1 2004, which requires a VFD on HVAC fans \geq 15 horsepower (where a variable flow system is required).

Equipment Eligibility: The rebates listed for this measure apply to fan and pump applications on HVAC distribution systems. The maximum fan or pump size is 100 hp. Equipment must be purchased and installed, and meet all other program terms and conditions.

Chillers retrofitted with a VFD, VFDs larger than 100 hp, or VFDs installed on non-HVAC equipment may be eligible for rebates under the PowerWise Custom Business Solutions program. For more information about this program, contact the Program Administrator **before** you purchase your equipment.

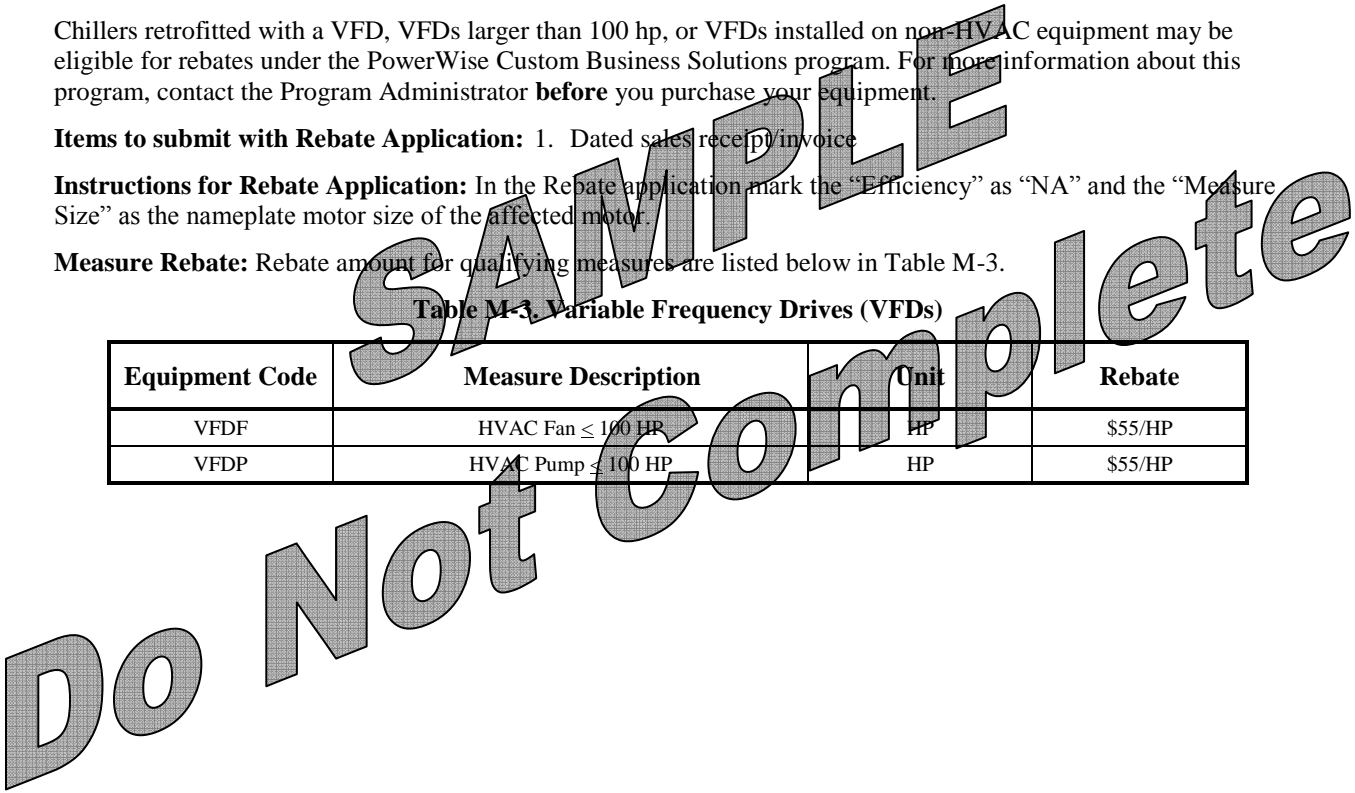
Items to submit with Rebate Application: 1. Dated sales receipt/invoice

Instructions for Rebate Application: In the Rebate application mark the “Efficiency” as “NA” and the “Measure Size” as the nameplate motor size of the affected motor.

Measure Rebate: Rebate amount for qualifying measures are listed below in Table M-3.

Table M-3. Variable Frequency Drives (VFDs)

Equipment Code	Measure Description	Unit	Rebate
VDFD	HVAC Fan \leq 100 HP	HP	\$55/HP
VFDP	HVAC Pump \leq 100 HP	HP	\$55/HP





REFRIGERATION PRODUCTS

This Equipment Catalog describes the eligibility requirements and rebate amounts for qualifying equipment under SRP's FY12 PowerWise Standard Business Solutions program. It also includes instructions on how to complete the Rebate Application and information regarding any required additional documentation. SRP's PowerWise Standard Business Solutions provides rebates for many types of energy efficient technologies. Please read the following sections carefully to ensure that you purchase and install qualifying equipment.

In order to be eligible for rebates through the PowerWise Standard Business Solutions program all equipment must meet the following requirements:

- Equipment must be purchased on or after May 1, 2011. Applications for post purchase measures must be received no later than July 31, 2012 to be eligible for rebates (subject to rebate availability).
- Equipment must be new and installed in a manner that meets or exceeds code regulations.
- Replaced equipment must be disposed of in accordance with local, state, or federal codes and regulations and cannot be re-installed elsewhere.

Pre-qualification of eligible measures under the PowerWise Standard Business Solutions program is not required **except** for Retrofit Lighting Equipment and occupancy sensors. Under this program, "Low Temperature" refrigeration applications refer to space temperatures less than or equal to 0 °F while "Medium Temperature" refrigeration applications refer to space temperatures from 1 to 35 °F. Additional eligibility and submittal requirements for refrigeration technologies are outlined in this Equipment Catalog.

Rebates for additional measures may be available. For more information about PowerWise Standard Business Solutions, eligibility requirements, rebate levels, other SRP energy efficiency programs, or general inquiries, contact a participating SRP Alliance Contractor. You can also visit the program's Web site at www.savewithsrpbiz.com, email us at savewithsrpbiz@srpnet.com, or contact the PowerWise Business Solutions hotline at 602-236-3054.

ANTI-SWEAT HEATER CONTROL PRODUCTS

Measure Description: When a refrigerator operates at a temperature below the dew point temperature of the surrounding air, condensation will form on the outside of the case. Anti-sweat heaters (ASH) prevent condensation from forming on display cases by heating the display case frame. This is necessary to allow customers to see inside cases and prevent excess moisture build-up. Anti-sweat heaters are generally set to run all the time, regardless of the relative humidity and dew point of the surrounding air. In addition to causing a significant electrical draw, the heat from the anti-sweat devices causes an increased refrigeration load. ASH controls are devices that sense the relative humidity in the air or condensation on the refrigerator's glass and reduce or cycle off the heater when it is not needed.

Applicability: New construction (except for walk-in main refrigerator or freezers) and retrofit installations are eligible.

Equipment Eligibility: Controller must sense humidity or condensation and adjust heater accordingly. Equipment must be purchased and installed and meet all other program terms and conditions. Rebates are not available when rebates are also paid for high-efficiency doors.

Items to submit with rebate Application:

1. Dated sales receipt/invoice
2. Manufacturer's specification sheets demonstrating compliance with equipment eligibility requirements

Instructions for Rebate Application: On the Rebate Application note the "Efficiency" as "NA" and the "Measure Size" as the total door perimeter in linear feet.

Measure Rebate: Rebate amounts for qualifying measures are listed below in Table R-1.

Table R-1. Anti-Sweat Heater Control Rebates

Equipment Code	Measure Description	Unit	Rebate
RFASHL	Anti-Sweat Heater Controls - Low Temperature Applications (≤ 0 °F)	Linear Foot	\$3.50/linear ft
RFASHM	Anti-Sweat Heater Controls - Medium Temperature Applications (> 0 °F)	Linear Foot	\$3.50/linear ft

AUTO CLOSER FOR MAIN & REACH-IN REFRIGERATOR & FREEZER DOORS

Measure Description: An auto closer is a device that automatically closes a refrigerator or freezer door. They may be applied to the main door of a walk-in unit or the door of a reach-in display case. This prevents excess heat from entering the cooler, thereby reducing the load on the compressor. They are typically required to close a door completely, even if left open as little as one inch.

Applicability: New construction (except for walk-in main refrigerator or freezer doors) and retrofit installations are eligible.

Equipment Eligibility: Auto closer for main refrigerator doors must firmly close door when door is within 1” of full closure. Auto closer for reach-in refrigerator doors must be applied to a door with a minimum perimeter of 16’ and must firmly close door when door is within 1” of full closure. Equipment must be purchased and installed and meet all other program terms and conditions.

Items to submit with rebate Application: 1. Dated sales receipt/invoice
 2. Manufacturer’s specification sheets demonstrating compliance with equipment eligibility requirements

Instructions for Rebate Application: On the Rebate Application note the “Efficiency” and “Measure Size” as “NA”.

Measure Rebate: Rebate amount for qualifying measures are listed below in Table R-2.

Table R-2. Door Auto Closer Rebates

Equipment Code	Measure Description	Unit	Rebate
RFWACL	Auto Closer Main Walk-in Unit Doors - Low Temperature Application (≤ 0 °F)	Each	\$50.00/each
RFWACM	Auto Closer Main Walk-in Unit Doors - Medium Temperature Application (1 to 35 °F)	Each	\$40.00/each
RFRACL	Auto Closer Reach-In Doors - Low Temperature Application (≤ 0 °F)	Each	\$50.00/each
RFRACM	Auto Closer Reach-In Doors - Medium Temperature Application (1 to 35 °F)	Each	\$40.00/each

DOCK DOOR SEALS FOR FREEZERS AND REFRIGERATORS

Measure Description: The dock door is the space where trucks pull up to refrigerated spaces for loading or unloading. During the delivery process, conditioned air can escape the facility or refrigerated truck, allowing unconditioned air to enter. This results in increased refrigeration loads and higher energy consumption. A dock door seal serves as an interface between the warehouse and the truck, preventing air from entering or leaving. There are a number of different types of dock door seals including curtains seals, cushion seals, and inflatable seals.

Applicability: Only retrofit installations are eligible.

Equipment Eligibility: Equipment must create seal between building and truck during loading. Seals requiring blowers are not eligible. Equipment must be purchased and installed and meet all other program terms and conditions.

Items to submit with Rebate Application: 1. Dated sales receipt/invoice
 2. Manufacturer’s specification sheets demonstrating compliance with equipment eligibility requirements

Instructions for Rebate Application: On the Rebate Application note the “Efficiency” as “NA” and the “Measure Size” as the total door perimeter in linear feet.

Measure Rebate: Rebate amount for qualifying measures are listed below in Table R-3.

Table R-3. Dock Door Seal Rebates

Equipment Code	Measure Description	Unit	Rebate
RFDDSF	Dock Door Seals for Freezers	Linear Foot	\$17.00/linear ft.
RFDDSR	Dock Door Seals for Refrigerators	Linear Foot	\$14.00/linear ft.

DOOR GASKETS FOR GLASS & SOLID DOORS

Measure Description: Gaskets provide a seal around the refrigerator door to prevent outside air from entering the cooler when the door is closed. Old or damaged door gaskets can lead to outside air leaks, resulting in higher refrigeration loads and excess frost build up on the evaporator. Replacing the damaged gasket can achieve a stronger seal, and help reduce refrigeration load.

Applicability: Only retrofit installations are eligible.

Equipment Eligibility: Replacement gaskets must meet or exceed the manufacturer’s specifications including dimensions, materials, attachment method, style, compression, and magnetism. Gaskets that received rebates from SRP are not eligible for rebates for three (3) years from the date of installation without SRP’s prior written approval. Equipment must be purchased and installed and meet all other program terms and conditions.

Items to submit with rebate Application: 1. Dated sales receipt/invoice
2. Manufacturer’s specification sheets demonstrating compliance with equipment eligibility requirements

Instructions for Rebate Application: On the Rebate Application note the “Efficiency” as “NA” and the “Measure Size” as the total door perimeter in linear feet.

Measure Rebate: Rebate amount for qualifying measures are listed below in Table R-4.

Table R-4. Door Gasket Rebates

Equipment Code	Measure Description	Unit	Rebate
RFDGGL	Door Gaskets for Glass Doors - Low Temperature Application (< 0 °F)	Linear Foot	\$3.50/linear ft.
RFDGGM	Door Gaskets for Glass Doors - Medium Temperature Application (1 to 35 °F)	Linear Foot	\$2.50/linear ft.
RFDGSL	Door Gaskets for Solid Doors - Low Temperature Application (< 0 °F)	Linear Foot	\$3.50/linear ft.
RFDGSM	Door Gaskets for Solid Doors - Medium Temperature Application (1 to 35 °F)	Linear Foot	\$2.50/linear ft.

ELECTRONICALLY COMMUTATED MOTORS

Measure Description: An electronically commutated motor (ECM) is a fractional horsepower direct current (DC) motor used most often in commercial refrigeration applications such as display cases, walk-in coolers/freezers, refrigerated vending machines, and bottle coolers. ECMs can also be used in HVAC applications, primarily as small fan motors for packaged terminal units or in terminal air boxes.

Applicability: New construction (except for walk-in main refrigerator or freezers) and retrofit installations are eligible.

Equipment Eligibility: All ECMs up to 1 HP in size may qualify for an incentive. Rebates are not available when rebates are paid for high-efficiency display cases. Equipment must be purchased and installed and meet all other program terms and conditions.

- Items to submit with Rebate Application:**
1. Dated sales receipt/invoice
 2. Manufacturer’s equipment specification sheet

Instructions for Rebate Application: On the Rebate application mark the “Efficiency” as “NA” and the “Measure Size” as the nameplate motor size.

Measure Rebate: Rebate amount for qualifying measures are listed below in Table R-5.

Table R-5. Electronically Commutated Motor (ECM) Rebates

Equipment Code	Measure Description	Unit	Rebate
ECMREF	Refrigeration Application	Nameplate Wattage	\$0.50/watt
ECMHVC	HVAC Application	Nameplate HP	\$50/HP

EVAPORATOR FAN CONTROLLER FOR WALK-IN COOLERS

Measure Description: Most walk-in coolers are cooled by forced air convection over an evaporator. The evaporator fan generally operates continuously, regardless of the cooling needs. In addition to consuming unneeded power, the fan motors produce heat that increases the refrigeration load of the system. Evaporator fan controllers sense the status of the cooling system and adjust the usage of the fan motor accordingly. Controllers can operate by cycling the fans off or reducing voltage to the fan. This saves energy by reducing the power drawn by the motor, as well as decreasing the load on the refrigeration system by eliminating the excess heat from the fan motor.

Applicability: New construction and retrofit installations are eligible.

Equipment Eligibility: Must control a minimum fan load of 1/20 HP and reduce fan power by at least 75% when operating at reduced speed. Equipment must be purchased and installed and meet all other program terms and conditions.

- Items to submit with rebate Application:**
1. Dated sales receipt/invoice
 2. Manufacturer’s specification sheets demonstrating compliance with equipment eligibility requirements

Instructions for Rebate Application: On the Rebate Application note the “Efficiency” as “NA” and the “Measure Size” as the size (in HP) of the controlled evaporator fan(s).

Measure Rebate: Rebate amount for qualifying measures are listed below in Table R-6.

Table R-6 Evaporator Fan Controller for Walk-in Cooler Rebates

Equipment Code	Measure Description	Unit	Rebate
RFWEFC	Evaporator Fan Controller for Walk-in Coolers	Each	\$25.00/each

FAST-ACTING COOLER & FREEZER DOORS

Measure Description: Fast-acting doors are doors for refrigerated areas that can open and close quickly, thereby reducing the amount of outside air entering the conditioned facility. The doors can be opened with a push button, or some type of automatic sensor. The doors are often insulated to prevent excess heat conduction. The two main classifications of fast acting doors are bi-fold doors and roll-up doors.

Applicability: Only retrofit installations are eligible.

Equipment Eligibility: Bi-fold doors must open or close in 1.5 seconds or less. Roll-up doors must open or close in 4 seconds or less. Equipment must be purchased and installed and meet all other program terms and conditions.

- Items to submit with rebate Application:**
1. Dated sales receipt/invoice
 2. Manufacturer’s specification sheets demonstrating compliance with equipment eligibility requirements

Instructions for Rebate Application: On the Rebate application mark the “Efficiency” as “NA” and the “Measure Size” as the square footage of the affected doorway.

Measure Rebate: Rebate amount for qualifying measures are listed below in Table R-7.

Table R-7. Fast-Acting Cooler and Freezer Door Rebates

Equipment Code	Measure Description	Unit	Rebate
RFFACD	Fast-acting Cooler Doors	Square Foot	\$30.00/sq. ft.
RFFAFD	Fast-acting Freezer Doors	Square Foot	\$80.00/sq. ft.

HIGH-EFFICIENCY DOORS FOR LOW TEMPERATURE DISPLAY CASES

Measure Description: High-efficiency doors generally include double or triple paned glass that helps prevent conductive heat loss from the display case. These doors also minimize anti-sweat heat. This measure is often referenced by utilities as ‘Special Doors with Low/No Anti-Sweat Heat.’

Applicability: New construction (except for walk-in main refrigerator or freezers) and retrofit installations are eligible.

Equipment Eligibility: Only available for low temperature applications ($\leq 0^{\circ}\text{F}$). Must be allow/no anti-sweat door with a total amperage below 0.39 amps per door at 120 volts. Equipment must be purchased and installed and meet all other program terms and conditions. Rebates are not available when rebates are paid for anti-sweat heater controls.

Items to submit with rebate Application: 1. Dated sales receipt/invoice
 2. Manufacturer’s specification sheets demonstrating compliance with equipment eligibility requirements

Instructions for Rebate Application: On the Rebate Application note the “Efficiency” and “Measure Size” as “NA”.

Measure Rebate: Rebate amount for qualifying measures are listed below in Table R-8.

Table R-8. High-Efficiency Doors for Low Temperature Display Cases Rebates

Equipment Code	Measure Description	Unit	Rebate
RFHEDL	High-efficiency Doors for Reach-In Display Case - Low Temperature Applications ($\leq 0^{\circ}\text{F}$)	Each	\$50.00/each

HIGH-EFFICIENCY OPEN AND REACH-IN DISPLAY CASES

Measure Description: Supermarkets use refrigerated open and reach-in (units with glass doors) display cases to allow customers to see and access products. High-efficiency display cases include features such as energy efficient lighting and electronically commutated fan motors.

Applicability: New construction and retrofit installations are eligible.

Equipment Eligibility: Display case equipment must have T-8 lamps with electronic ballasts (or better) and electronically commutated motors. Only new, free-standing display cases are eligible. Retrofitting existing display cases is eligible under the individual lighting and ECM measures. Lighting for existing cases falls under the retrofit lighting program. Equipment must be purchased and installed and meet all other program terms and conditions.

Items to submit with rebate Application: 1. Dated sales receipt/invoice
 2. Manufacturer’s specification sheets demonstrating compliance with equipment eligibility requirements

Instructions for Rebate Application: On the Rebate application mark the “Efficiency” as “NA” and the “Measure Size” as the length of the unit in feet.

Measure Rebate: Rebate amount for qualifying measures are listed below in Table R-9.

Table R-9. High Efficiency Open and Reach-In Display Case Rebates

Equipment Code	Measure Description	Unit	Rebate
RFODCM	High-efficiency Open Display Case - Medium Temperature Applications (1 to 35 °F)	Linear Foot	\$20.00/linear ft
RFRDCM	High-efficiency Reach-In Display Case - Medium Temperature Applications (1 to 35 °F)	Linear Foot	\$70.00/linear ft
RFRDCL	High-efficiency Reach-In Display Case - Low Temperature Applications (≤ 0 °F)	Linear Foot	\$150.00/linear ft

:

NIGHT COVERS FOR OPEN VERTICAL AND HORIZONTAL DISPLAY CASES

Measure Description: Refrigerated display cases in food stores are often left open to allow customers to easily see and access the contents of the case. This causes the refrigerator compressors to work over-time to compensate for the warming caused by the infiltration of store air. Night covers are blinds that can be used to cover the open display case during the night time when it is not necessary for the contents of the case to be visible.

Applicability: New construction and retrofit installations are eligible.

Equipment Eligibility: Night covers must be permanently installed on display cases and in use for at least 6 hours nightly.

Items to submit with rebate Application: 1. Dated sales receipt/invoice
 2. Manufacturer’s specification sheets demonstrating compliance with equipment eligibility requirements

Instructions for Rebate Application: On the Rebate Application note the “Efficiency” as “NA” and the “Measure Size” as the linear footage (lengthwise) of the display case which the installed cover encloses.

Measure Rebate: Rebate amount for qualifying measures are listed below in Table R-10.

Table R-10. Night Cover Rebates

Equipment Code	Measure Description	Unit	Rebate
RFVONC	Night Covers for Vertical Open Display Cases	Linear Foot	\$10.00/linear ft.
RFHONC	Night Covers for Horizontal Open Display Cases	Linear Foot	\$10.00/linear ft.

STRIP CURTAINS FOR WALK-IN AND REFRIGERATED WAREHOUSE SPACES

Measure Description: Strip curtains are flexible barriers that cover the door to a walk-in refrigerator or refrigerated warehouse. They are used to allow spaces to be easily accessed with equipment or products, while reducing the infiltration of warm outside air. Strip curtains generally replace direct openings to the outside air.

Applicability: Only retrofit installations are eligible.

Equipment Eligibility: Install strip curtains on doorways of walk-in refrigerators or freezers or doorways to refrigerated warehouses. Strip curtains replacing worn or existing curtains are not eligible. Equipment must be purchased and installed and meet all other program terms and conditions.

Items to submit with rebate Application: 1. Dated sales receipt/invoice

Instructions for Rebate Application: On the Rebate application mark the “Efficiency” as “NA” and the “Measure Size” as the square footage of the affected doorway.

Measure Rebate: Rebate amount for qualifying measures are listed below in Table R-11.

Table R-11. Strip Curtains Rebates

Equipment Code	Measure Description	Unit	Rebate
RFSCFN	Strip Curtains Walk-in & Refrigerated Warehouse Spaces	Square Foot	\$6.00/sq. ft.

A sample copy of the Alliance Contractor Application is provided in this Appendix. Please contact the Program Administrator or check online at www.savewithsrpbiz.com for the most recent version of this application.



Contractor Application and Participation Agreement

Important: SRP’s Energy Efficiency Alliance provides valuable marketing resources and technical education and expertise to manufacturers, distributors, and contractors of energy efficient equipment. By applying to become an Alliance Contractor, participants can enhance their business offerings for commercial and industrial customers. Other potential benefits may include:

1. Alliance Contractors may receive marketing materials to aid in the promotion and marketing of the PowerWise Standard Business Solutions program at no charge.
2. Company information may be included on the SRP web site, www.savewithsrpbiz.com, where consumers will be directed to locate an Alliance Contractor.
3. When opportunity exists, Alliance Contractors will be informed of and assisted with additional cooperative marketing and promotion of the SRP energy efficiency programs, such as advertising, newsletters, manufacturer promotions, training/seminars, etc.

To apply, please complete this application and agree to the terms and conditions with your signature. Please allow two (2) weeks for processing and notification.

Contact Information

Please complete the following information as you would like it to appear on the SRP website, www.savewithsrpbiz.com

Business name: _____

Contact name: _____ Title: _____

Address: _____ City: _____ State: _____ Zip: _____

Phone: _____ Fax: _____ E-mail: _____

Website: _____

Our company is: (check all that apply): Distributor Contractor Manufacturer’s representative

Business Information

Please complete the following questions pertaining to your business. Information will be kept confidential and is intended only to aid in the success of the Energy Efficiency Alliance.

Contractor License #(s): _____

Tax commission #(s): _____

Percentage of contracted work: _____ New construction _____ Retrofit/Renovation _____ Service

Percentage of business: _____ Residential _____ Commercial

Number of employees/service trucks: _____ Employees _____ Service trucks

Year company founded: _____

Preferred correspondence: Fax Email

Our company is applying to participate in the Energy Efficiency Alliance for: (check all that apply)

Lighting HVAC Refrigeration

Premium Efficiency Motors Variable Frequency Drives Compressed Air

References

Please list customer and trade reference that can be contacted as part of the application review process. If applying for more than one Alliance network, please attach additional customer and trade references as necessary for each technology area.

Customer references. Please list three of your commercial or industrial customers who have installed energy-efficient equipment in the last five years.

	Company Name	Contact Name	Contact Phone	City	State
1.	_____	_____	_____	_____	_____
2.	_____	_____	_____	_____	_____
3.	_____	_____	_____	_____	_____

Trade references. Please list three suppliers or licensed contractors whom you have purchased materials or received services in the last five years.

	Company Name	Contact Name	Contact Phone	City	State
1.	_____	_____	_____	_____	_____
2.	_____	_____	_____	_____	_____
3.	_____	_____	_____	_____	_____

SAMPLE
Do Not Complete

Participation Agreement Terms and Conditions

1. The Alliance Contractor will accurately inform SRP’s customers of energy efficiency program eligibility requirements, participation steps, and rebate opportunities. The Alliance Contractor agrees to fully understand available rebate programs including; qualifying products, rebate amounts, and eligibility requirements. Alliance Contractor will participate in SRP sponsored training and/or seminars pertinent to the program procedures and requirements, and display point-of-purchase material for qualified products, rebate amounts and eligibility requirements. Participation in the SRP Energy Efficiency Alliance does not guarantee an Alliance Contractor will receive any referrals under this Agreement.
2. Alliance participation will aid in the customer rebate application process by accurately answering questions and directing customer to the current rebate forms, the customer service hotline at (602) 236-3054, and/or to www.savewithsrpbiz.com.
3. The Alliance Contractor will not use SRP corporate name, logo, identity, or any affiliation on any Alliance Contractor marketing or other materials (printed copy or electronic) for any reason, including, without limitation, soliciting customers, without SRP’s prior written consent. Neither the Alliance Contractor, nor any Alliance Contractor employee(s) shall be considered, for any purpose, to be an employee, agent, partner or representative of SRP and neither shall have any power or right to bind SRP to any obligation, or act on behalf of or in the name of SRP in dealing with customers or third parties. The parties will not exercise any control or supervision of each other or be responsible for each other in the performance of any service.
4. If the Alliance Contractor desires to discontinue its participation in the SRP Energy Efficiency Alliance, it may do so by notifying SRP of its decision by providing a 30 day written notice prior to termination. SRP reserves the right to terminate this Agreement for any reason, including, without limitation, if the Alliance Contractor fails to comply with any program rules or guidelines; the Alliance Contractor misrepresents SRP’s programs to customers and/or other parties; or the Alliance Contractor knowingly provides false or incorrect information to SRP.

Participation Agreement Terms and Conditions, continued.

- 5. The Alliance Contractor will maintain any and all applicable license(s) and insurance coverage(s), and adhere to the requirements to do business within the state of Arizona. The Alliance Contractor will install energy-efficient equipment in accordance with applicable statutes, regulations, ordinances, codes, and accepted industry standards. The Alliance Contractor will recycle or dispose of old equipment and components resulting from the installation of energy-efficient equipment in accordance with applicable statutes, regulations, ordinances, codes, and accepted industry standards.
- 6. SRP and its agents shall not be liable for any rebates if Alliance Contractor has provided incorrect information about the amount or conditions associated with receiving such rebate, or for rebate ineligibility resulting from equipment that is mislabeled or misrepresented by the Alliance Contractor. SRP and its agents will not be responsible for any tax liability imposed on the customer as a result of the payment of rebates.

Acceptance of Terms

Under penalties of perjury, I hereby certify by my signature below that:

- Alliance Contractor has read and understood all Terms and Conditions of this agreement and the PowerWise Standard Business Solutions Program Manual and agrees to comply with all terms and conditions pertaining to this program;
 - All information provided to SRP by Alliance Contractor is true and correct and Alliance Contractor will notify SRP immediately of any changes;
 - Alliance Contractor shall defend, protect, indemnify and hold harmless SRP, Nexant Inc., and their respective board members, officers, directors, managers, associates, related firms and entities, employees, servants, and agents (the "Indemnified Parties") against all claims, losses, expenses, damages, demands, judgments, causes of action, suits, and liability of every kind and character whatsoever ("claims") arising out of or incident to, or related in any way to, directly or indirectly, participation in the Energy Efficiency Alliance program; provided however, that Alliance Contractor shall not be required to indemnify and hold harmless any Indemnified Party against claims adjudicated to have been caused by such party's gross negligence or willful misconduct.
 - Signatory has the authority to bind the Alliance Contractor to these terms.
- By typing my name in the signature space below, I understand this is my electronic signature, and I agree this will represent the same as my handwritten signature.

Name of Alliance Contractor _____

Signature _____

Printed Name _____

Date _____

Title _____

SEND COMPLETED AGREEMENTS TO:
 SRP PowerWise Standard Business Solutions
 PMB 192
 4802 E Ray Rd Ste 23
 Phoenix, AZ 85044-6417
 Fax: (480) 345-7601
 Email: savewithsrpbiz@srpnet.com

SRP offers a range of energy efficiency opportunities to help non-residential customers save energy and money. Reduced energy costs, technical assistance, and/or incentives are available for qualifying customers. A summary of other available non-residential energy efficiency programs is provided below. Additional information regarding eligibility requirements, rebates, and participation processes is available at www.savewithsrpbiz.com or by contacting the Program Administrator.

PowerWise Standard Business Solutions

The PowerWise Standard Business Solutions program promotes the purchase of industry-proven, high-efficiency equipment. Rebates serve to buy down the difference between the cost of high-efficiency and standard equipment, thereby making the high-efficiency equipment a more attractive option for customers. Rebates are available for qualifying lighting, HVAC, ECM motors, variable speed drive (VFD), compressed air, and refrigeration measures.

PowerWise Custom Business Solutions

The PowerWise Custom Business Solutions program provides a comprehensive platform for cost-effective non-residential energy efficiency projects not addressed by the PowerWise Standard Business Solutions program. One of the primary goals of the program is to obtain verifiable, cost-effective and persistent electrical energy savings that result from the installation of energy efficiency measures.

In addition to equipment rebates, SRP offers eligible customers the opportunity to receive a preliminary and technical energy efficiency assessment performed by a Qualified Service Provider (QSP). Customers eligible for these assessments include those provided electricity on an E-60 services price plan, or with installed compressed air systems of 100 HP or larger. Under this program, these assessments assist customers in the identification and evaluation of potential energy efficiency improvements. Specifically, pre-approved preliminary assessments up to \$3,000 in cost will be funded by SRP to conduct an initial assessment of savings and economic potential of identified systems or projects. More in-depth pre-approved technical assessments, co-funded by SRP at a 50% match up to \$15,000 per customer per year, will provide specific measure details and estimates of costs, energy savings, and financial returns. The remaining eligible 50% cost of the technical assessment, up to \$15,000, will be paid by SRP for customers that submit an eligible Installation Notice for a measure(s) that meets the customer's minimum economic criteria for investment.

PowerWise Retrocommissioning Solutions

PowerWise Retrocommissioning Solutions is designed to help customers achieve demand and energy savings in commercial and industrial facilities. Savings are realized through the systematic evaluation of facility systems and customer's implementation of cost-effective measures targeted to improve facility operation that, in many cases, also improve occupant comfort and production efficiency.

Program participants are commercial and industrial facility owners who have demonstrated a commitment to spend \$10,000 or more to implement identified retrocommissioning measures with an estimated total project simple payback of two years or less based upon electric savings.

PowerWise New Construction Solutions

The New Construction Solutions program provides technical assistance and financial rebates to help architects, engineering professionals, and building owners optimize energy and demand savings, and reduce operating costs in commercial new construction projects.

The program employs a whole building performance-based strategy that fosters an integrated design approach with the project's design team starting during the project's conceptual phase. Early involvement combined with the comprehensive interaction of key project stakeholders affords the opportunity to cost-effectively evaluate and incorporate efficiency strategies while design components are still fluid. The program is designed to be scalable for projects of varying size and flexible to grow with customer needs.

PowerWise Small Business Solutions

The PowerWise Small Business Solutions program promotes the purchase of high-efficiency lighting in small commercial and industrial facilities. Free audits are available to qualifying customers to help identify lighting efficiency opportunities. Rebates are also available to pre-approved installation contractors to buy down the difference between the cost of high-efficiency lighting and standard lighting, thereby making the high-efficiency equipment a more attractive option for customers. Rebates are available for qualifying lighting measures.

A brief listing of energy efficiency resources available on the Web is provided below.

- AHRI Online Directory of Certified Equipment. The Air Conditioning, Heating and Refrigeration Institute (AHRI) is a national trade association of HVAC equipment manufacturers. A publicly available online directory lists detailed equipment information for all certified equipment. (www.ahridirectory.org)
- Air Conditioning Contractors of America (ACCA). The ACCA is a non-profit organization representing HVAC contractors in the U.S. Current industry information and resources are available from their web site. (www.acca.org)
- Consortium for Energy Efficiency (CEE). CEE is a non-profit organization that develops national initiatives to promote the manufacture and purchase of energy-efficient products and services. (www.cee1.org)
- Department of Energy – Energy Efficiency and Renewable Energy (EERE). EERE provides information for consumers on a wide range of energy efficiency topics. (www.eere.energy.gov)
- ENERGY STAR. ENERGY STAR is a government-backed program designed to help consumers increase their energy efficiency. (www.energystar.gov)
- Electrical Apparatus Service Association, Inc. (EASA). EASA provides its members with current information on materials, equipment, and technological advances in the electromechanical industry. (www.easa.com)
- Motor Decisions Matter. Motor Decisions Matter is a nation program encouraging proper motor selection and management. The program is supported by a number of industry trade groups and orchestrated by the Department of Energy’s Office of Industrial Technologies. (www.motorsmatter.org)
- National Electrical Manufacturers Association (NEMA). The Motor and Generator section of NEMA has developed an industry standard for premium efficiency motors. (www.nema.org)
- US Green Building Council (USGBC). USGBC is composed of more than 13,500 organizations from across the building industry that are working to advance structures that are environmentally responsible, profitable, and healthy places to live and work. (www.usgbc.org)

Do I qualify for this program?

The PowerWise Standard Business Solutions program is available to all SRP non-residential retail electric customers in SRP's service territory. Customers' rate schedules can be verified by looking at a recent SRP electric bill.

How long will this program be available?

Customers will be able to receive rebates from this program in its current form for equipment installed through April 30, 2012, subject to rebate availability. SRP anticipates the PowerWise Standard Business Solutions program to be an integral part of its future resource plan moving forward.

Is there a maximum or minimum rebate amount that I can receive from this program?

There is a \$200,000 rebate cap per customer per program year from the PowerWise Standard Business Solutions program. Customers are limited to \$300,000 per customer per program year from participation in all programs offered by SRP. There is no minimum rebate amount required for participation in the PowerWise Standard Business Solutions program.

What type of equipment is available for rebates through this program?

The PowerWise Standard Business Solutions program offers rebates for lighting, motors, VFDs, HVAC, refrigeration and compressed air equipment. Specific eligibility requirements can be found in the Equipment Catalogs or Program Manual available online at www.savewithsrpbiz.com or by contacting the Program Administrator.

What if my project involves energy efficient equipment that is not covered by this program?

SRP offers rebates through a number of energy efficiency programs, including programs for custom efficiency projects. Information about these programs including customer and project eligibility requirements can be found online at www.savewithsrpbiz.com or by contacting the Program Administrator.

What if the equipment specifications or scope of my completed project differs from the description in the Rebate Reservation Request?

SRP recognizes that project plans and specifications may change as installations are made. Complete equipment descriptions are to be included in the final documentation sent to SRP. Rebates may exceed the amount reserved by the Rebate Reservation Request subject to rebate availability and rebate restrictions of the program.

Can I assign my rebate to someone else?

Customers have the option of assigning rebates to a third party payee such as a parent company or landlord. A section of the application is dedicated to rebate payment designation.

Can I submit multiple Rebate Applications or Lighting Workbooks?

Customers are encouraged to maximize their energy savings by undertaking comprehensive facility-wide energy efficiency upgrade projects. However a single customer may submit multiple applications for different projects throughout the program year. Customer rebate caps still apply.

What kind of documentation is required to participate in this program?

All customers must submit a copy of a dated paid sales receipt or invoice upon project completion. This allows SRP to verify the date of equipment installation. Additional documentation, such as manufacturer specification sheets, may be requested for specific equipment types. The Equipment Catalog lists any documents that must be submitted with the rebate application.

How should I apply if my building efficiency upgrade includes installations of lighting and other equipment?

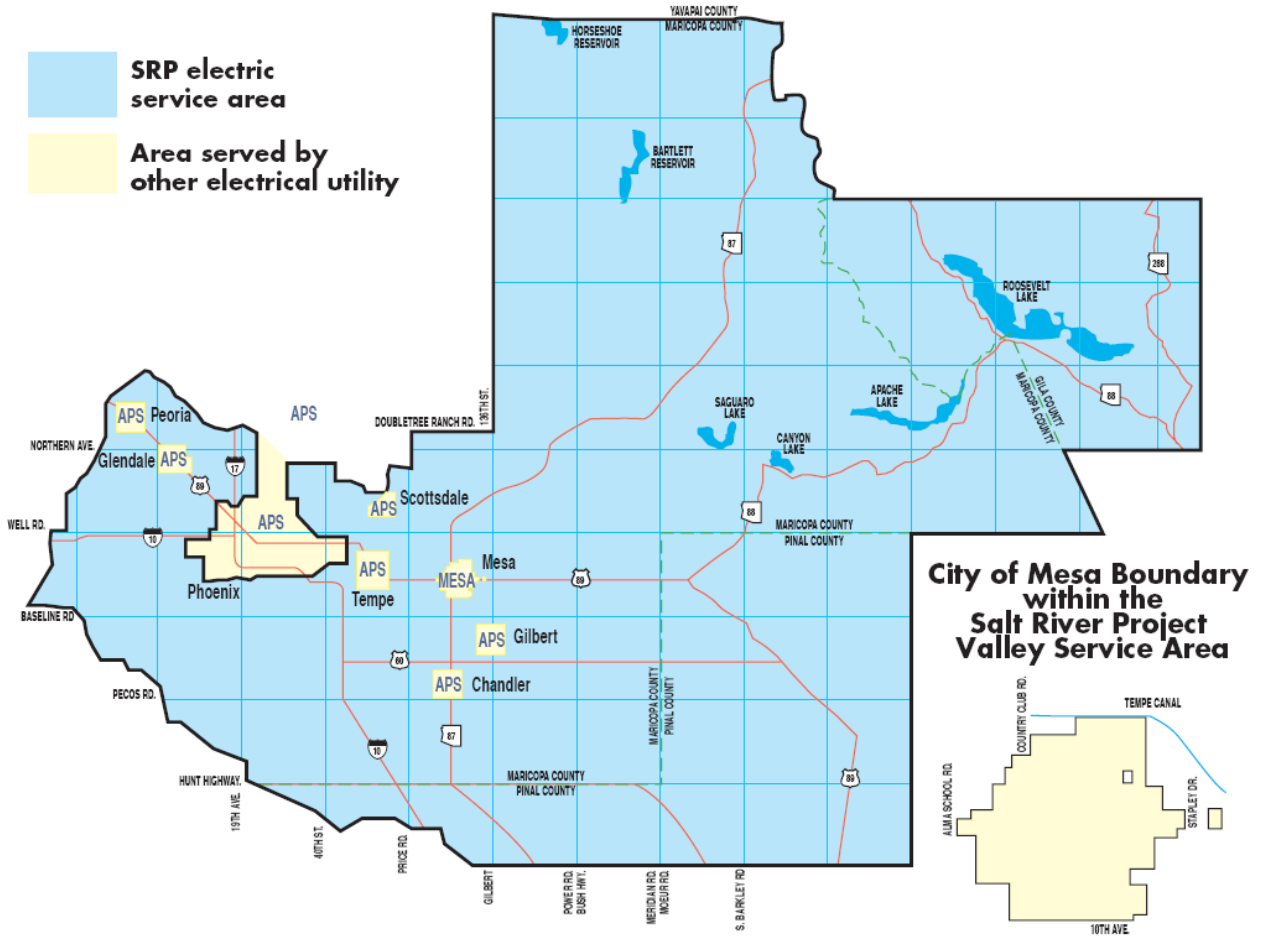
Customers with a project involving both lighting upgrades and eligible mechanical equipment must submit a Lighting Workbook *and* a Rebate Application even if the installations are part of the same upgrade project.

Where can I find out more about this program?

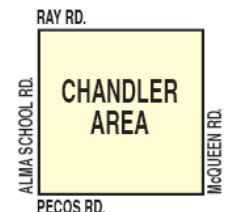
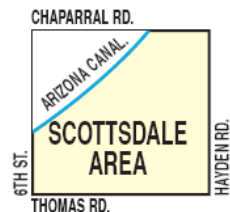
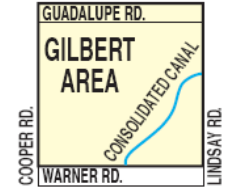
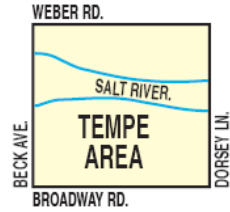
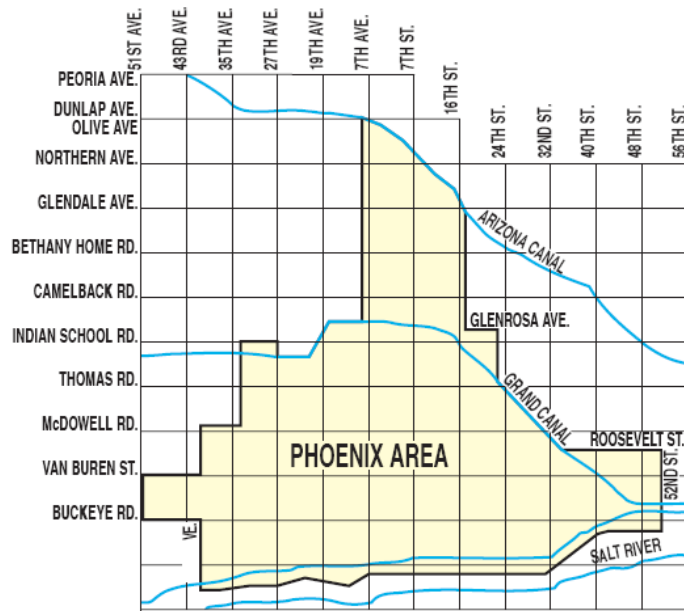
Customers can learn more about the PowerWise Standard Business Solutions program and other SRP programs in the following ways:

- Web
 - www.savewithsrpbiz.com
- Telephone
 - (602) 236-3054
- Fax
 - (480) 345-7601
- Email
 - savewithsrpbiz@srpnet.com

An illustration of SRP’s service area is provided below. A more detailed map of SRP service area is available by contacting the Program Administrator.



APS Boundaries within the Salt River Project Valley Service Area





Customer informational hotline: (602) 236-3054

Lighting Alliance Contractor direct line: (602) 236-1616

Mechanical Alliance Contractor direct line: (602) 236-1611

savewithsrpbiz@srpnet.com
