
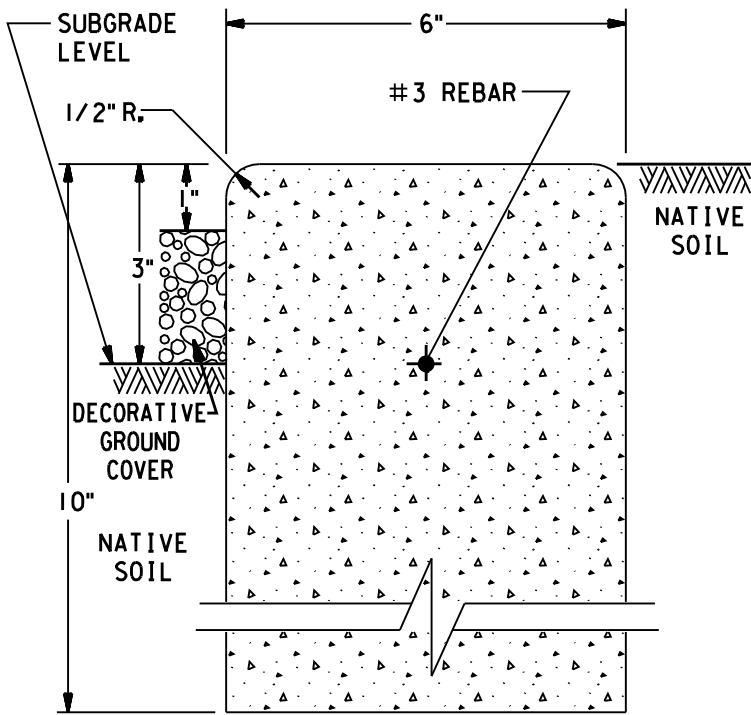


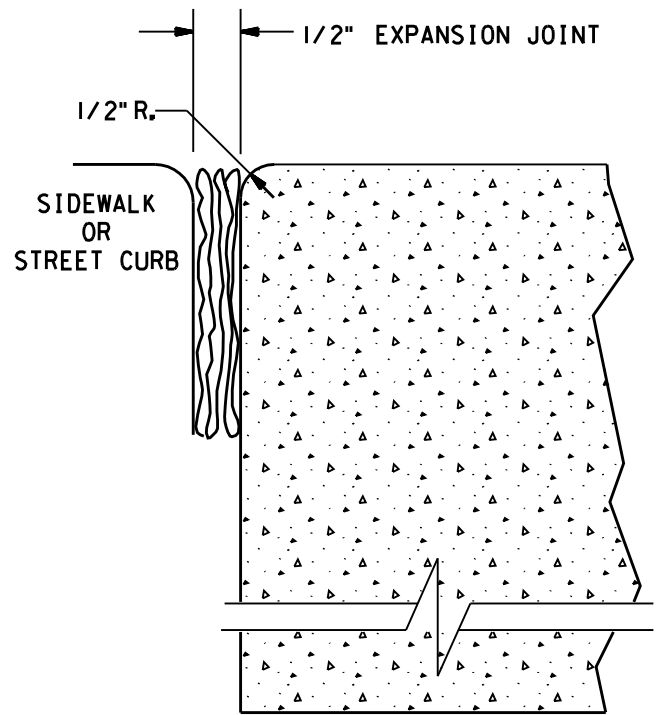
LANDSCAPING

<u>Compatible Unit</u>	<u>Title/Description</u>	<u>Page No.</u>
1.	Dry Landscape, Border Details	11-100
2.	Dry Landscape, Controlled Area Detail	11-110
3.	Ground Slope, Fill and Horizontal Clearance Requirements for Pad Mounted Equipment	11-210
4.	Erosion Prevention Method, Enclosures Installed on Slopes	11-220
5.	Erosion Prevention Methods, Pre-manufactured Wall	11-222
6.	Conduit Installation Near Trees	11-300

Underground Distribution Construction Standards  PROPRIETARY MATERIAL	LANDSCAPING INDEX	UG Index 11.doc
		ISSUE DATE: 09-26-08 REV. DATE: APPROVAL: D.Poore
		i

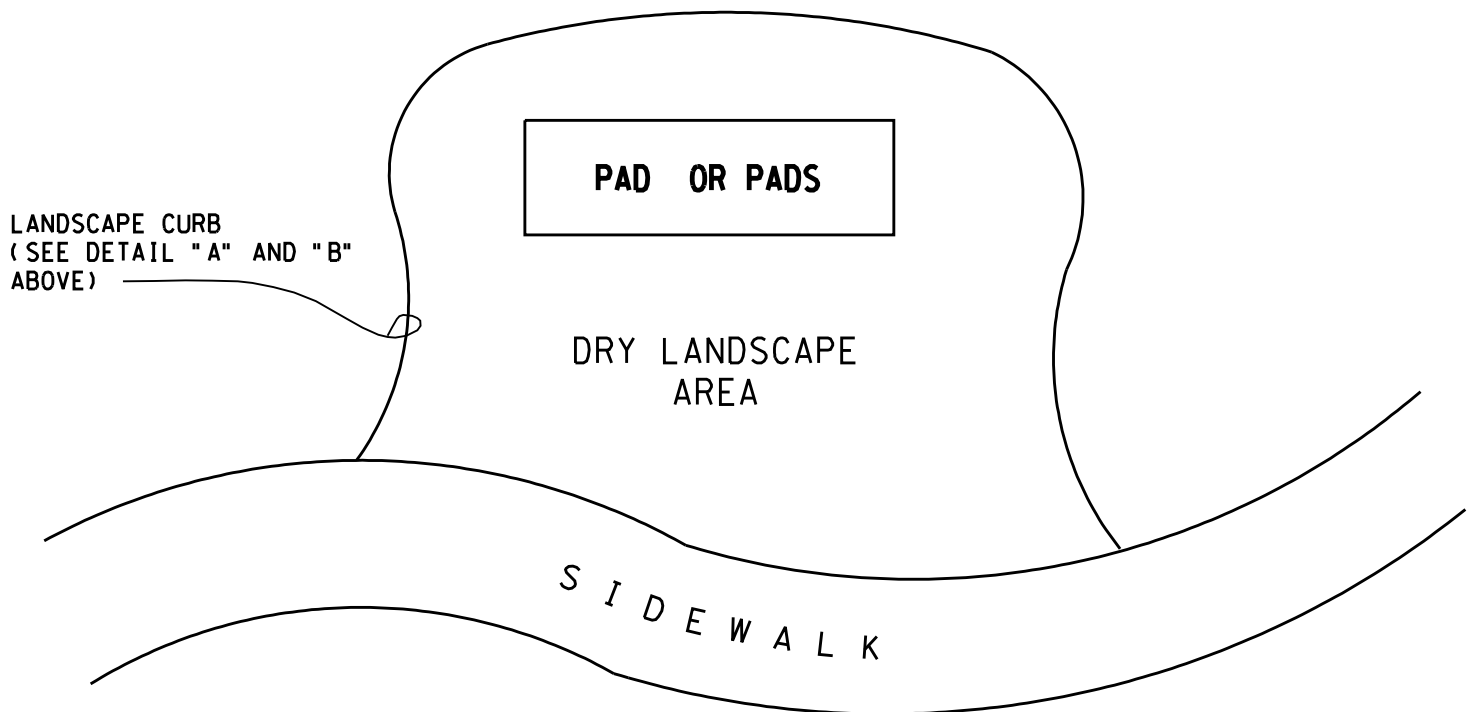


DETAIL A



DETAIL B

1. ELEVATION OF LANDSCAPE CURB TO MATCH SIDEWALK OR TOP OF STREET CURB.
2. ALL CONCRETE CURB WORK SHALL BE DONE IN ACCORDANCE WITH MAG SECTION 340.
3. CURBING OF OTHER MATERIAL OR DESIGN IS ALLOWED WITH THE APPROVAL OF THE HOMEBUILDER MANAGEMENT CENTER ENGINEER OR CONSTRUCTION SPECIALIST.




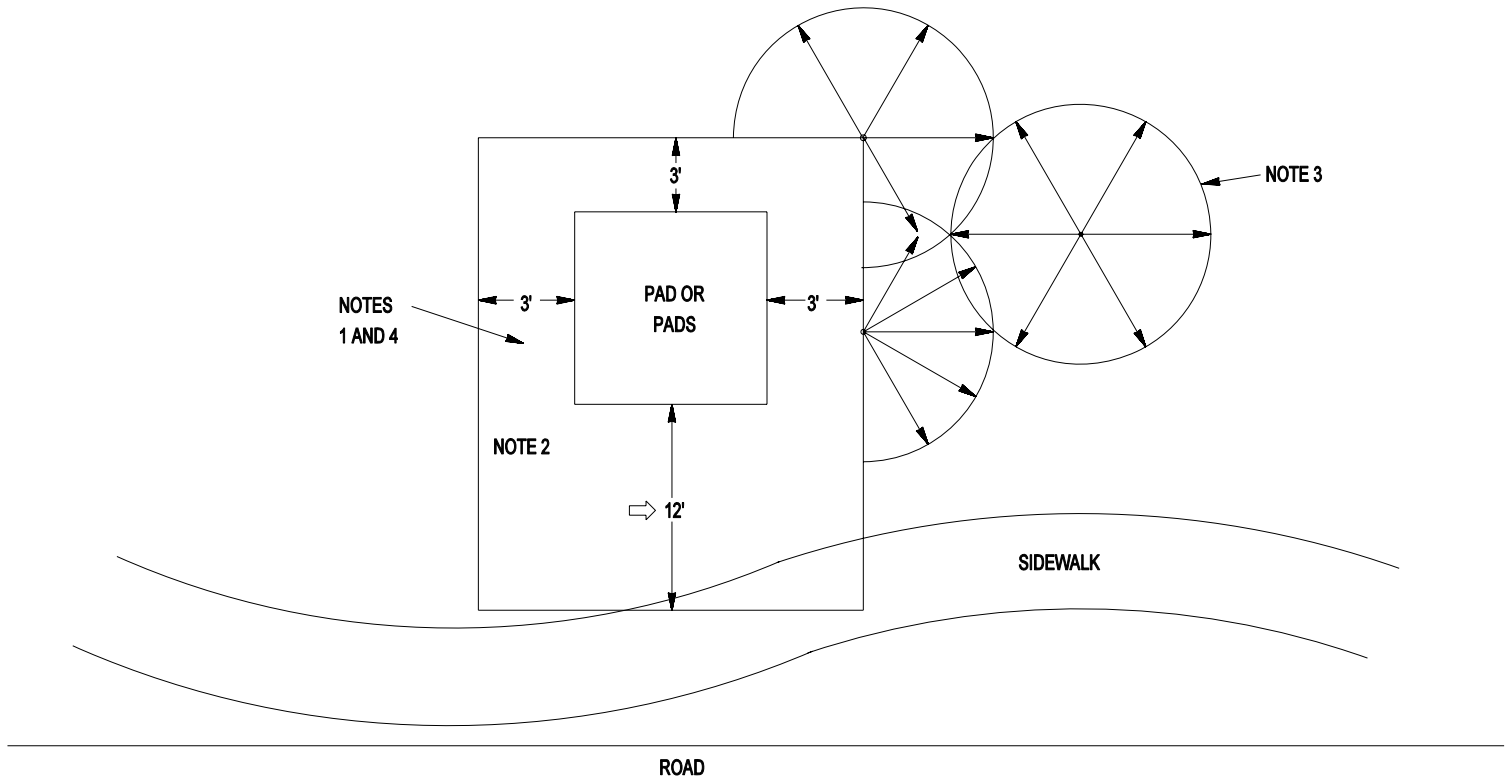
LANDSCAPE CURB
(SEE DETAIL "A" AND "B"
ABOVE)

PAD OR PADS

DRY LANDSCAPE
AREA


S I D E W A L K

UNDERGROUND DISTRIBUTION CONSTRUCTION STANDARDS  PROPRIETARY MATERIAL	LANDSCAPING DRY-LANDSCAPE BORDER DETAILS	8513E321.DGN ISSUE DATE: 02/15/02 REV. DATE: 08/06/08 APPROVAL:
		11-100

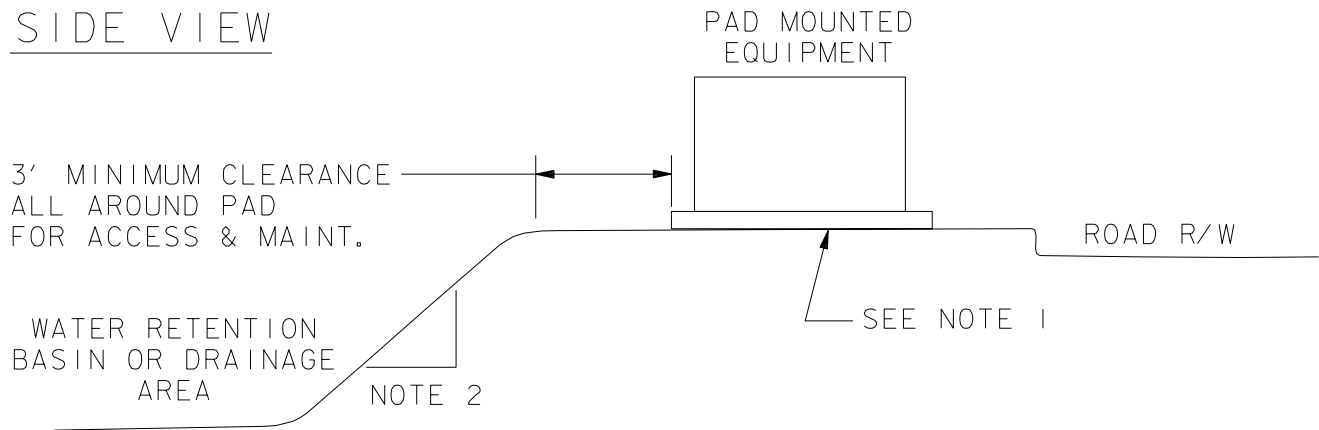


NOTES:

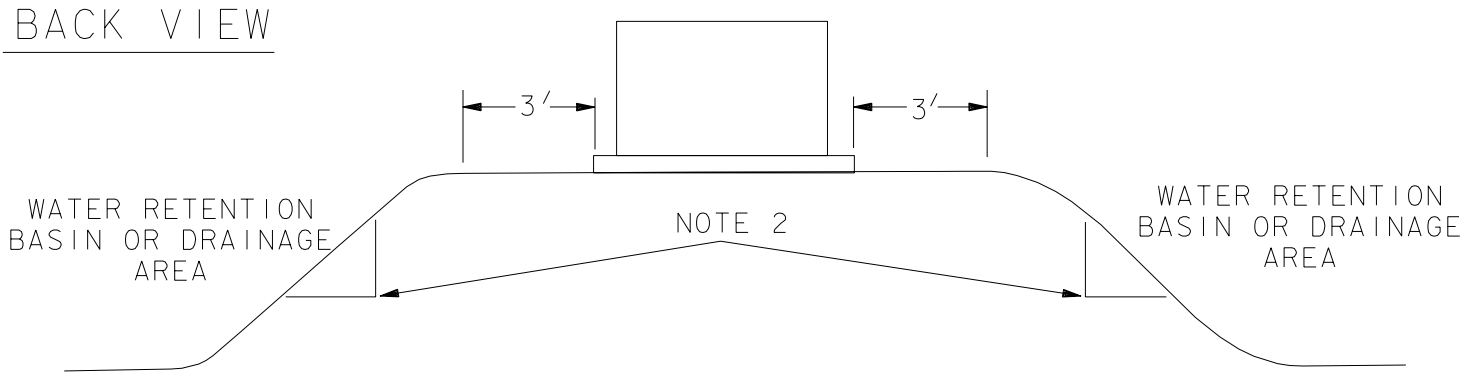
1. EASEMENT GRANTOR SHALL MAINTAIN A CLEAR AREA THAT EXTENDS 3 FEET FROM AND AROUND ALL EDGES OF ALL TRANSFORMER PADS AND OTHER EQUIPMENT PADS AND A CLEAR OPERATIONAL AREA THAT EXTENDS 12 FEET IMMEDIATELY IN FRONT OF ALL TRANSFORMER AND OTHER EQUIPMENT OPENINGS NO OBSTRUCTION, TREES, SHRUBS FIXTURES OR PERMANENT STRUCTURES SHALL BE PLACED WITHIN SAID AREAS.
2. AREA TO BE DRY LANDSCAPED.
3. SPRINKLER HEADS SHALL BE DIRECTED AWAY FROM PAD MOUNTED EQUIPMENT, AS SHOWN ABOVE. SPRINKLER HEADS SHALL NOT SPRAY ON PAD MOUNTED EQUIPMENT OR DRY LANDSCAPED AREA AROUND EQUIPMENT.
4. DRY LANDSCAPE SURFACE MAY BE CRUSHED GRANITE OR GRAVEL WITH A MAXIMUM PARTICLE SIZE NO GREATER THAN 1", NATIVE SOIL, CONCRETE OR ASPHALT PAVEMENT.
5. SEE Pg. 11-100 FOR LANDSCAPE BORDER IF REQUIRED.
6. DRY LANDSCAPE IS REQUIRED IN COMMON AREAS SUCH AS SCHOOLS, WATER RETENTION BASIN BORDERS, PARKS, ETC.

8513E322.DGN	LANDSCAPING DRY-LANDSCAPE CONTROLLED AREA DETAIL	UNDERGROUND DISTRIBUTION CONSTRUCTION STANDARDS
ISSUE DATE: 02/20/02		
REV. DATE: 10/19/06		PROPRIETARY MATERIAL
APPROVAL:		
11-110		

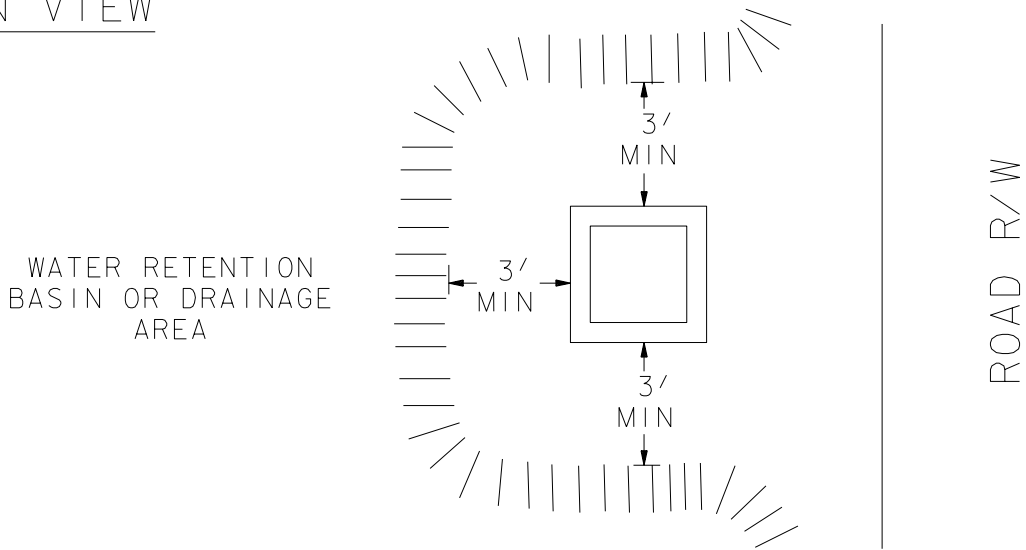
SIDE VIEW



BACK VIEW




PLAN VIEW

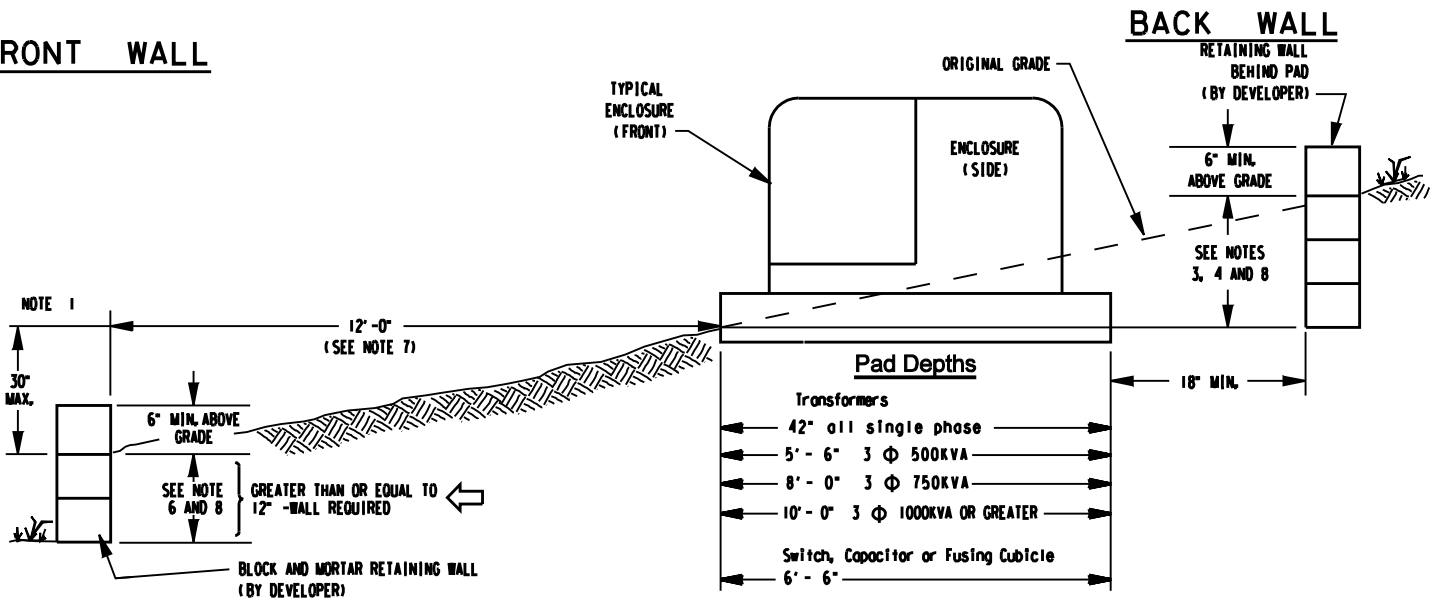


NOTES:

1. REVIEW GEOTECHNICAL REPORT OF AREA FOR PROPER COMPACTION OF FILL OR SOIL BELOW ELECTRICAL EQUIPMENT PADS. FILL SHALL BE NATIVE COMPACTED FILL. ALL FILL MATERIAL SHALL BE IN COMPLIANCE WITH THE GEOTECHNICAL REPORT. SEE TRENCHING, SOIL TYPES, BACKFILL MATERIAL AND COMPACTION REQUIREMENTS.
2. THE MAXIMUM SLOPE PER SRP REQUIREMENTS IS 3 HORIZONTAL TO 1 VERTICAL. IF 3 HORIZONTAL TO 1 VERTICAL SLOPE IS EXCEEDED, SUBMIT A SET OF ENGINEERED CALCULATIONS SHOWING A SLOPE STABILITY ANALYSIS OR A RETAINING WALL DESIGN TO POLICIES, PROCEDURES AND STANDARDS FOR APPROVAL.

<p>UNDERGROUND DISTRIBUTION CONSTRUCTION STANDARDS</p>  <p>PROPRIETARY MATERIAL</p>	<p>LANDSCAPING GROUND SLOPE, FILL AND HORIZONTAL CLEARANCE REQUIREMENTS FOR PAD MOUNTED EQUIPMENT</p>	<p>8513E318.DGN</p> <p>DATE: 04/18/02 REV. NO: 0 REV. DATE: APPROVAL:</p> <p>11-210</p>
--	---	---

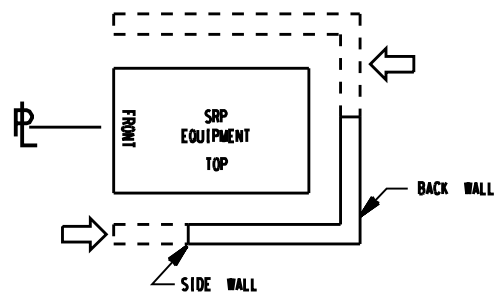
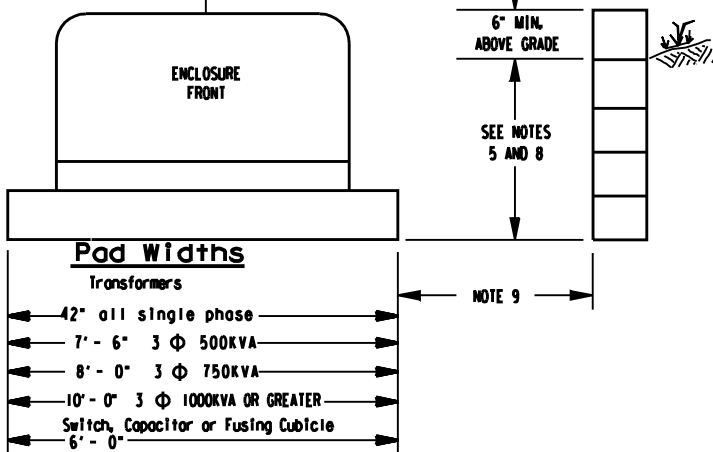
FRONT WALL



BACK WALL

SIDE WALL

PLAN VIEW OF WALLS



- When it becomes necessary to notch out or fill a slope to install an enclosure, the cleared area should be of sufficient size to accommodate the enclosure and shorings. Slope in front of enclosure shall not be greater than 30" in 12 feet. All grading is to be done by Developer.
- Area under and behind pad must be level and compacted to 95% density (See trench in section 6-173 page 2 of 2).
- A back retaining wall is required when the change in ground elevation is 12 inches or more at any point 18 inches or less behind the pad.
- A side retaining wall is required when the change in the ground elevation is 18" or more at any point 18 inches or less behind the pad.
- A side retaining wall is required when the change in ground elevation is 12" or more at any point 18 inches or less to the side of the pad.
- A front retaining wall is required when the change in ground elevation is 12" or more at any point 12 feet or less in front of the pad.
- This dimension may be reduced to 4 feet if measured from a street curb.
- Developer shall install guardrail per the authority having jurisdiction.
- 3 foot minimum on all equipment except single phase transformers. On single phase transformers 18 inch minimum allowed for fire and retention walls.

8513E17.DGN

ISSUE DATE: 01/15/87

REV. DATE: 07/10/08

APPROVAL:

11-220

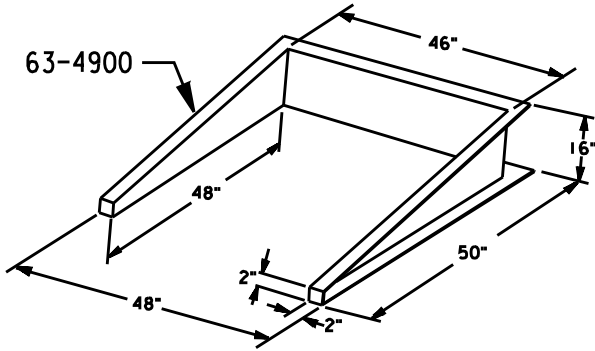
LANDSCAPING EROSION PREVENTION METHOD ENCLOSURES INSTALLED ON SLOPES

UNDERGROUND DISTRIBUTION
CONSTRUCTION STANDARDS

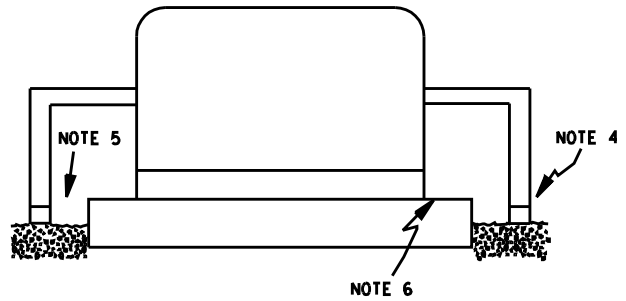


PROPRIETARY MATERIAL

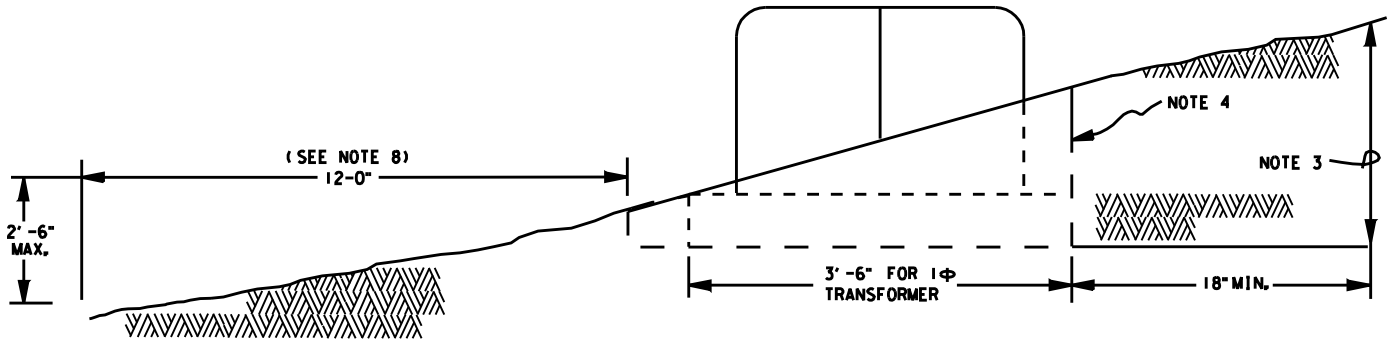
**PRE-MANUFACTURED WALL
DIMENSIONS**



FRONT VIEW




SIDE VIEW



UXBW	SRP INSTALL
UXBWG	CONTRACTOR INSTALLATION SRP SUPPLIED CUSTOMER INSTALLED ←

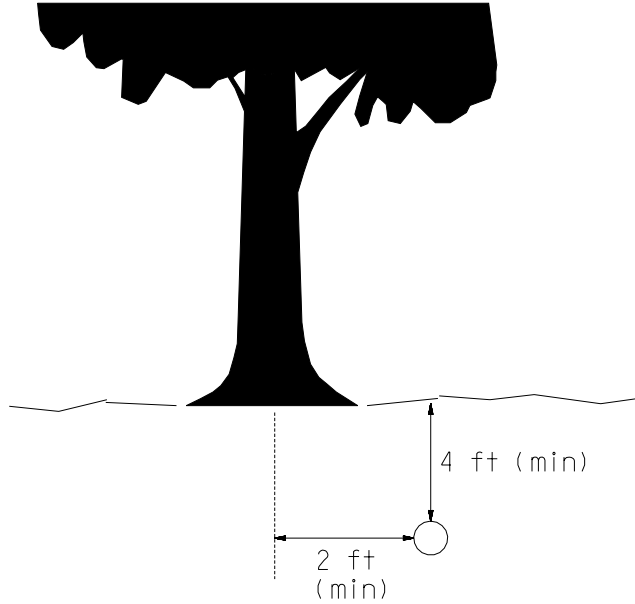
NOTES:

1. WHEN IT BECOMES NECESSARY TO NOTCH-OUT OR FILL A SLOPE TO INSTALL AN ENCLOSURE, THE CLEARED AREA SHOULD BE OF SUFFICIENT SIZE TO ACCOMMODATE THE ENCLOSURE AND SHORINGS. SLOPE IN FRONT OF ENCLOSURE SHALL NOT BE GREATER THAN 30 INCHES IN 12 FEET.
2. AREA UNDER AND BEHIND PAD MUST BE LEVEL AND COMPACTED, PER TRENCH SPECIFICATION NOTES IN TRENCHING SECTION.
3. A WALL IS REQUIRED IF THIS DIMENSION IS 12" OR MORE.
4. PACK SOIL AROUND WALL TO SURROUNDING GRADE TO HOLD WALL IN PLACE.
5. PACK SOIL BETWEEN WALL AND PAD TO ONE HALF PAD LEVEL.
6. REMOVE ALL SOIL FROM SURFACE OF PAD.
7. IF ASSISTANCE IS REQUIRED, CONTACT ELECTRIC SYSTEM ENGINEERING.
8. THIS DIMENSION MAY BE REDUCED TO 4 FEET IF MEASURED FROM A STREET CURB.
9. SEE ALSO ELECTRICAL CLEARANCE STANDARDS BOOK.
10. THIS WALL FOR 1Ø PADS ONLY.
11. TOP OF PAD SHALL BE 4" MINIMUM ABOVE SURROUNDING FINISH GRADE AND AT SUFFICIENT ELEVATION TO PREVENT FLOODING.

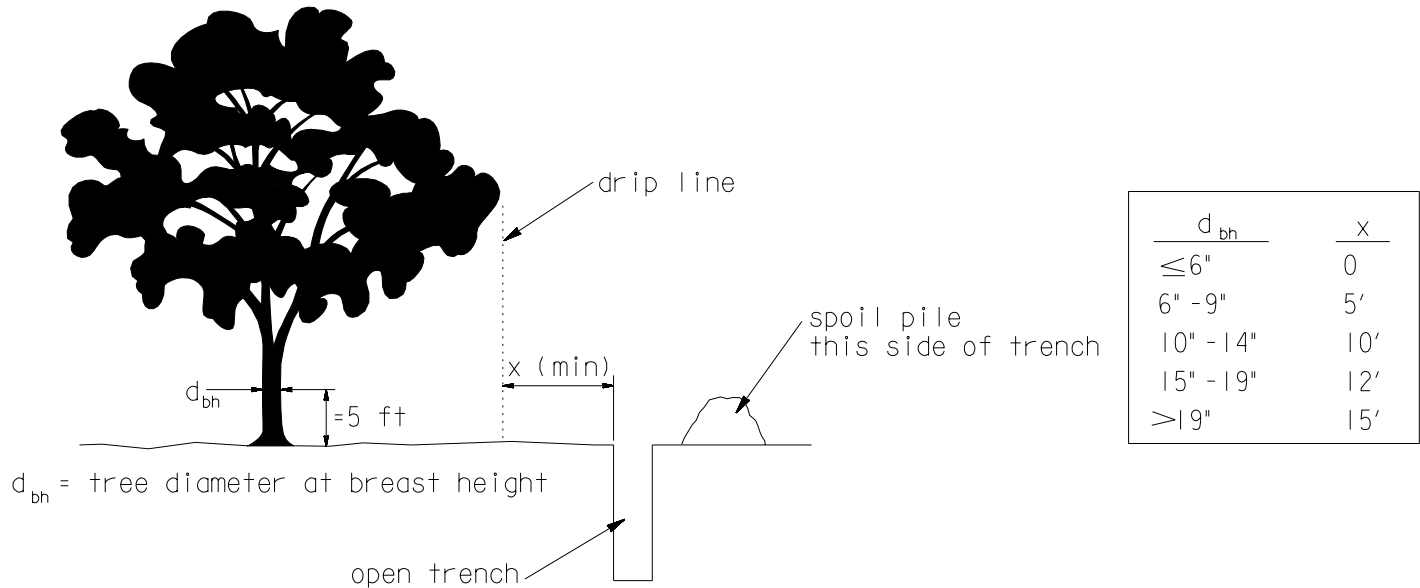
UNDERGROUND DISTRIBUTION CONSTRUCTION STANDARDS  PROPRIETARY MATERIAL	LANDSCAPING EROSION PREVENTION METHODS PRE-MANUFACTURED WALL UXBW, UXBWG	8513E178.DGN ISSUE DATE: 11/29/94 REV. DATE: 07/24/08 APPROVAL: WEL 11-222
---	---	--

Conduit Installation Near Trees

1. When possible, keep bores adjacent to trees at the minimum dimensions shown below:



2. When possible, keep open cuts at least as far away from trees as shown below:



General Guidelines:

- A. When possible, adhere to the National Arbor Day Foundation's guide, "Trenching and Tunneling Near Trees - A Field Pocket Guide for Qualified Utility Workers" (latest edition).
- B. Any root 2" or larger that is accidentally cut shall be sawed clean through an undamaged portion of the root. Make cuts flush with the side of the trench closest to the tree.
- C. Moisten clean soil to be placed back into the trench. Backfill as soon as possible to prevent root drying. Tamp soil to its original firmness, but do not compact. Water backfill after placement.
- D. Do not drive equipment or vehicles under trees or within the drip line. If needed, protect tree trunk from scraping or gouging by equipment with fencing, wood slats or other methods.

8513E324.DGN	INITIAL RELEASE	UNDERGROUND DISTRIBUTION CONSTRUCTION STANDARDS
DATE: 12/20/01 REV. NO: 0 REV. DATE: APPROVAL:	LANDSCAPING CONDUIT INSTALLATION NEAR TREES	
11-300	 PROPRIETARY MATERIAL	