


ELECTRICAL MAINTENANCE

| <u>DESCRIPTION</u> | <u>PAGE NO.</u> |
|---|-----------------|
| High Pressure Sodium Troubleshooting | 6-1-1 |
| Handhole Relocation for Existing Streetlight Pole | 6-2-1 |
| Epoxy Bypass Riser, Obsolete..... | 6-3-1 |

| | | |
|---|--|---|
| Outdoor Lighting Standards  PROPRIETARY MATERIAL | ELECTRICAL MAINTENANCE INDEX 6-1 | ISSUE DATE: 01-22-09 REV. DATE: APPROVAL: D.Poore OL-Index-6.doc |
|---|--|---|

1. Photocell

- a. Light on in daylight, replace the photocell.
- b. Light off, cover photocell to block light.
 - 1) Light turns on. Photocell is OK. If the photocell is older than five years, it is out of warranty, replace it anyway.
 - 2) Light does not turn on. Replace photocell.

2. Lamp


- a. Light is reported to be cycling on and off, first visit:
 - 1) Check the photocell orientation to make sure it is not aiming at a night-time light source.
 - 2) If this is the first visit replace the lamp.
- b. Light is reported to be cycling on and off, later visits:
 - 1) Visually inspect capacitor, ballast, socket and wiring. If there is any damage the luminaire may need to be replaced.
 - 3) Measure line voltage. Then, cover the photocell to switch on the light.

The 70 Watt to 150 Watt luminaires operate with input voltage as low as 114V.

The 250 Watt and 400 Watt luminaires operate with voltage as low as 108V.

If the voltage is lower than these minimums there may be service wire damage, loose or corroded connections in the luminaire, hand-hole, j-box or source.

After these have been ruled out there may be a design problem where the wire size may need to be increased.

| | | |
|---|--|--|
|  | REV. NEW FORMAT | |
| | ELECTRICAL MAINTENANCE HIGH PRESSURE SODIUM TROUBLESHOOTING | ISSUE DATE: 12/10/99 REV. DATE: 01/13/09 APPROVAL: W.LARAMIE |
| | 6-1-1 | 8518E57.DGN |

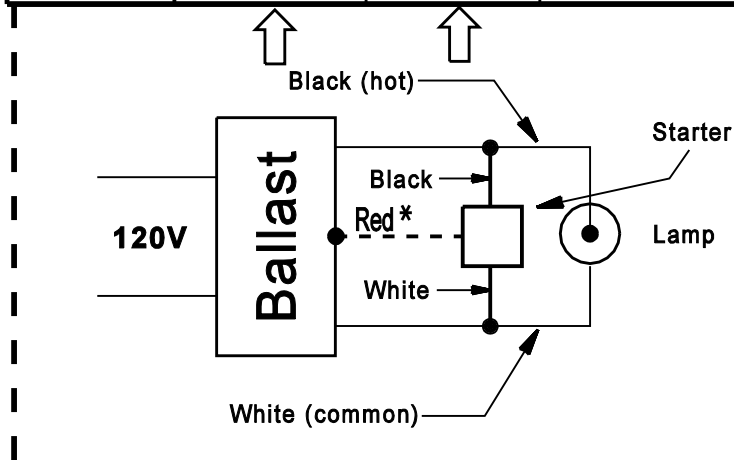
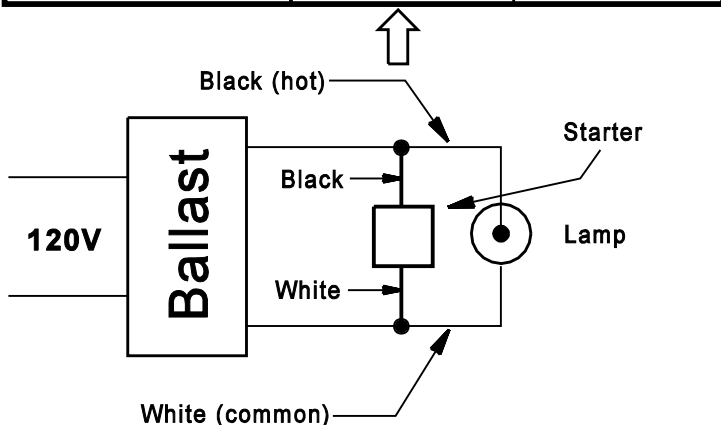
3. BALLAST AND STARTER:

Remove the HPS lamp and install the mogul base adapter (SRP stock code 29-4600) with one of the following test lamps.

| HPS Lamp Size (watts) | Install for Test |
|-----------------------|---------------------------------------|
| 70 watt | 100 watt incandescent bulb (65-1207) |
| 100 watt | 100 watt incandescent bulb |
| 150 watt | 100 watt incandescent bulb |
| 250 watt | 250 watt mercury vapor lamp (61-2785) |
| 400 watt | 400 watt mercury vapor lamp (61-2900) |

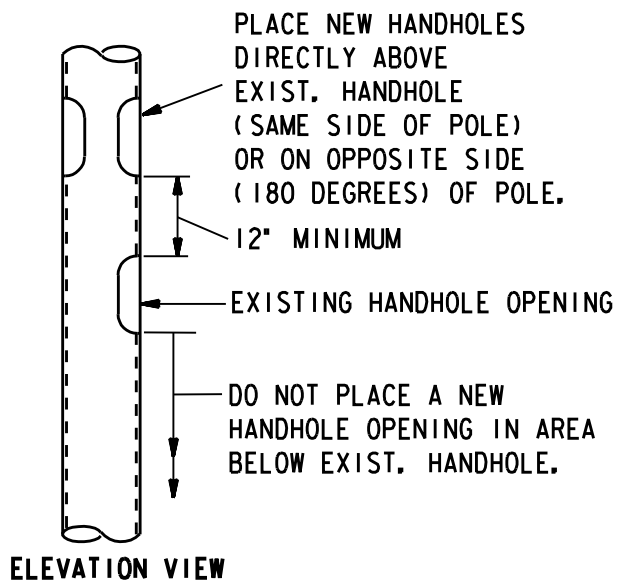
b. Cover the photocell, if the test lamp does not light, the ballast is bad and the entire luminaire should be replaced. If the test lamp turns on, the ballast is good. Replace the starter per the chart below.

| Existing Two-Wire Starter | | | Existing Three-Wire Starter | | |
|---------------------------|----------------------|--|-----------------------------|-------------------------------|------------------|
| Watts | Replacement Starters | | Watts | Replacement Starters | |
| 70 100 150 | | 61-0972 (Univ.) GE 35-967410-51 OR Milbank SS-1 | 70 100 150 | 61-0988 (West.) 220C173G11 | 61-0972 (Univ.)* |
| 250 400 | | | 250 400 | | |



- When replacing an existing three-wire starter with a two-wire starter, remove or cut and insulate the ballast wire.

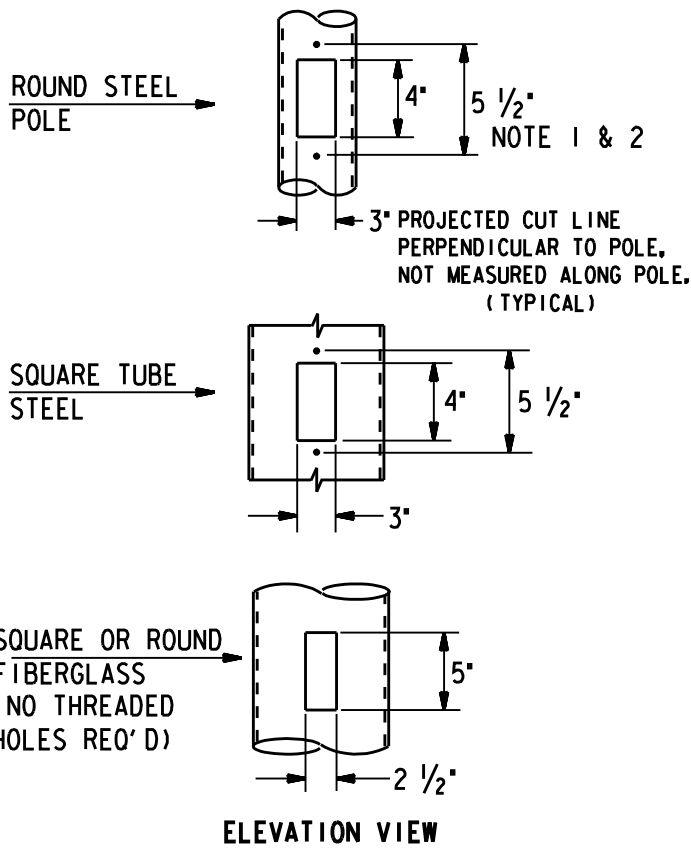
HANDHOLE PLACEMENT



FABRICATION NOTES:

1. DRILL AND TAP FOR 1/4-20 UNC THREADED HOLE FOR 1/4" DIA. STAINLESS STEEL HEX HEAD BOLT. (TYPICAL ONLY W/STEEL POLES).
2. ALL HANDHOLE CUT EDGES SHALL BE GROUND SMOOTH WITH NO SHARP EDGES.
3. PERSONNEL SAFETY SHALL BE OBSERVED WHEN CUTTING FIBERGLASS. SAFETY MASKS SHALL BE WORN TO PREVENT FIBERGLASS FINES FROM ENTERING THE LUNGS. SAFETY MASKS SHALL BE APPROVED PER OSHA (OCCUPATIONAL SAFETY AND HEALTH ADMINISTRATION).

HANDHOLE OPENING DIMENSIONS



| POLE DIAMETER (O. D.) | APPROXIMATE POLE CIRCUMFERENCE | HANDHOLE COVER STOCK CODE | COMPATIBLE UNIT |
|-------------------------|--|---------------------------|-----------------|
| 3 1/2" | 11" | 61-1502 | ULH02 |
| 4 1/2" | 14" | 61-1500 | ULH00 |
| 5 9/16" | 17 1/2" | 61-1500 | ULH00 |
| 6 5/8" | 20 1/2" | 61-1500 | ULH00 |
| SQUARE TUBE STEEL POLES | ALL SQUARE POLES HAVE THE SAME SIZE HANDHOLE COVER | 61-1507 | ULH06 |
| ALL FIBERGLASS POLES | ALL FIBERGLASS POLES HAVE THE SAME SIZE HANDHOLE COVER | 61-1511 | ULH11 |

| | | | |
|--|---|--|--|
| | REV. NEW FORMAT | | |
| | ELECTRICAL MAINTENANCE HANDHOLE RELOCATION FOR EXISTING STREETLIGHT POLE | | ISSUE DATE: 02/01/05 REV. DATE: 01/20/09 APPROVAL: W.LARAMIE |
| | 6-2-1 | | 8518E171.DGN |

